

## THE PHAT BOAT — SANLORENZO



**Builder:** SANLORENZO

**Year Built:** 2015

**Model:** Motor Yacht

**Price:** PRICE ON APPLICATION

**Location:** Italy

**LOA:** 105' 8" (32.21m)

**Beam:** 23' 2" (7.06m)

**Max Draft:** 6' 7" (2.01m)

**Max Speed:** 30 Kts. (35 MPH)

Our experienced yacht broker, Andrey Shestakov, will help you choose and buy a yacht that best suits your needs **The Phat Boat — SANLORENZO** from our catalogue. Presently, at Shestakov Yacht Sales Inc., we have a wide variety of yachts available on our sale's list. We also work in close contact with all the big yacht manufacturers from all over the world.

If you would like to buy a yacht **The Phat Boat — SANLORENZO** or would like help answering any questions concerning purchasing, selling or chartering a yacht, please call **+1(954)274-4435**

# TABLE OF CONTENTS

|                              |   |
|------------------------------|---|
| TABLE OF CONTENTS            | 2 |
| SPECIFICATIONS               | 4 |
| Overview                     | 4 |
| Basic Information            | 4 |
| Dimensions                   | 4 |
| Speed, Capacities and Weight | 4 |
| Accommodations               | 5 |
| Hull and Deck Information    | 5 |
| Engine Information           | 5 |
| DETAILED INFORMATION         | 6 |
| NEW TO MARKET HYBRID!!!      | 6 |
| Exclusions                   | 6 |
| Disclaimer                   | 6 |
| PHOTOS                       | 7 |
| 106 - Phat boat-3            | 7 |
| 106 - Phat boat-2            | 7 |
| 106 - Phat boat-4            | 7 |
| 106 - Phat boat-5            | 7 |
| 106 - Phat boat-7            | 7 |
| 106 - Phat boat-6            | 7 |
| 106 - Phat boat-8            | 8 |
| 106 - Phat boat-9            | 8 |
| 106 - Phat boat-10           | 8 |
| 106 - Phat boat-11           | 8 |
| 106 - Phat boat-12           | 8 |
| 106 - Phat boat-13           | 8 |
| 106 - Phat boat-14           | 9 |
| 106 - Phat boat-15           | 9 |

---

|                    |           |
|--------------------|-----------|
| 106 - Phat boat-16 | 9         |
| 106 - Phat boat-17 | 9         |
| 106 - Phat boat-19 | 9         |
| 106 - Phat boat-18 | 9         |
| 106 - Phat boat-21 | 10        |
| 106 - Phat boat-20 | 10        |
| <b>CONTACTS</b>    | <b>11</b> |
| Contact details    | 11        |
| Telephones         | 11        |
| Office hours       | 11        |
| Address            | 11        |

---

# SPECIFICATIONS

---

## Overview

---

New to market, the SL106 Hybrid is an immaculate example of one of the most popular models in Sanlorenzo's semi-planing line. Her familiar, yet updated lines reflect over 50 years of nautical expertise and handcrafted quality. Although originally built for the European market, she is a world yacht allowing her to cruise locations spanning the globe. As the first Hybrid yacht to come out of Sanlorenzo, the owner in partnership with the shipyard has maintained her to the highest degree. With low hours (400) on her main engines and new generators with 1 year warranty, she offers a fantastic opportunity for a new owner to enjoy her for the summer season with peace of mind.

The focal point of the main salon is a stunning hydraulic drop-down terrace. A substantial garage stores a tender and water toys, leaving the decks and flybridge uncluttered for entertaining. At the bow is a seating and sunbathing area shaded by a removable sail-cover style awning.

Accommodations include an on-deck Master stateroom, 2 spacious VIP staterooms, and two guest staterooms. For ultimate privacy, all staterooms have ensuite heads. Both guest staterooms feature a convertible sliding berth system to allow for a twin or double berth arrangement.

Crew accommodations for up to 5.

## Basic Information

---

**Category:** Motor Yacht

**Model Year:** 2015

**Year Built:** 2015

**Country:** Italy

## Dimensions

---

**LOA:** 105' 8" (32.21m)

**Beam:** 23' 2" (7.06m)

**Max Draft:** 6' 7" (2.01m)

## Speed, Capacities and Weight

---

**Max Speed:** 30 Kts. (35 MPH)

**Fuel Capacity:** 2192.6 Gallons

---

## Accommodations

---

**Total Cabins:** 4

**Total Heads:** 5

---

## Hull and Deck Information

---

**Hull Material:** Fiberglass

---

## Engine Information

---

**Engines:** 2

**Manufacturer:** MTU

**Model:** 16V2000

**Engine Type:** Inboard

**Fuel Type:** Diesel

---

# DETAILED INFORMATION

---

---

## NEW TO MARKET HYBRID!!!

---

New to market, the SL106 Hybrid is an immaculate example of one of the most popular models in Sanlorenzo's semi-planing line. Her familiar, yet updated lines reflect over 50 years of nautical expertise and handcrafted quality. Although originally built for the European market, she is a world yacht allowing her to cruise locations spanning the globe. As the first Hybrid yacht to come out of Sanlorenzo, the owner in partnership with the shipyard has maintained her to the highest degree. With low hours (400) on her main engines and new generators with 1 year warranty, she offers a fantastic opportunity for a new owner to enjoy her for the summer season with peace of mind.

The focal point of the main salon is a stunning hydraulic drop-down terrace. A substantial garage stores a tender and water toys, leaving the decks and flybridge uncluttered for entertaining. At the bow is a seating and sunbathing area shaded by a removable sail-cover style awning.

Accommodations include an on-deck Master stateroom, 2 spacious VIP staterooms, and two guest staterooms. For ultimate privacy, all staterooms have ensuite heads. Both guest staterooms feature a convertible sliding berth system to allow for a twin or double berth arrangement.

Crew accommodations for up to 5.

---

## Exclusions

---

Owner's personal belongings.

---

## Disclaimer

---

The Company offers the details of this vessel or yacht in good faith but cannot guarantee or warrant the accuracy of this information nor warrant the condition of the vessel. A buyer should instruct his representatives, agents, or his surveyors, to investigate such details as the buyer desires validated. This vessel or yacht is offered subject to prior sale, price change, or withdrawal without notice.

# PHOTOS

106 - Phat boat-2



106 - Phat boat-3



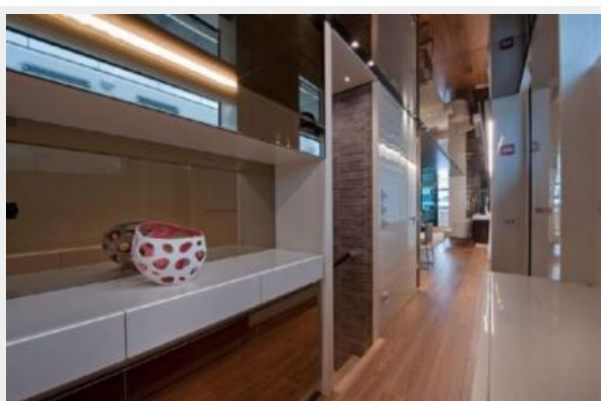
106 - Phat boat-4



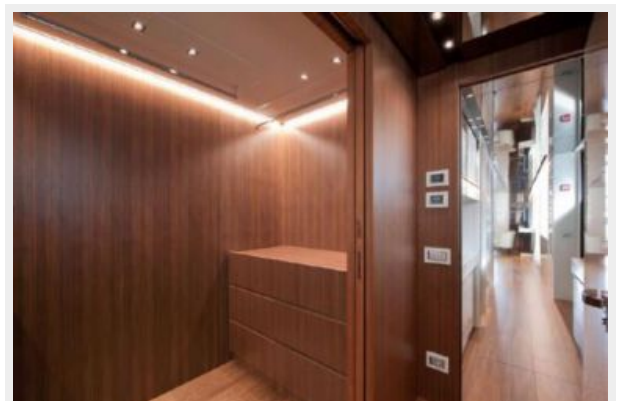
106 - Phat boat-5



106 - Phat boat-6



106 - Phat boat-7





106 - Phat boat-8



106 - Phat boat-9



106 - Phat boat-10



106 - Phat boat-11



106 - Phat boat-12



106 - Phat boat-13





106 - Phat boat-14



106 - Phat boat-15



106 - Phat boat-16



106 - Phat boat-17



106 - Phat boat-18



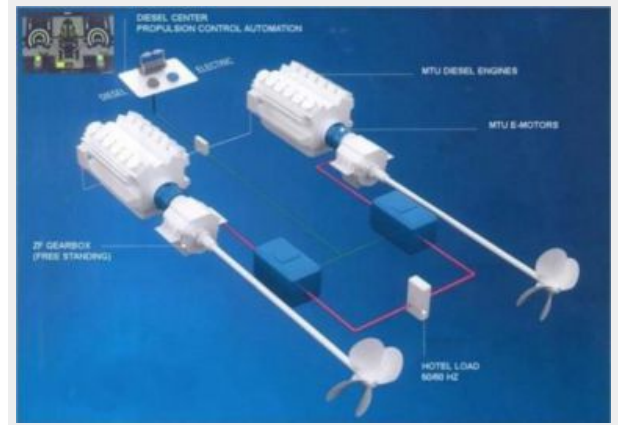
106 - Phat boat-19



106 - Phat boat-20



106 - Phat boat-21



# CONTACTS

---

Andrey Shestakov, leading yacht broker of the sales department of Shestakov Yacht Sales Inc. Shestakov Yacht Sales Inc., the official representative of the Miami/Fort Lauderdale FL headquarters.

## Contact details

---

Email: [andrey@shestakovyachtsales.com](mailto:andrey@shestakovyachtsales.com)

Web: [shestakovyachtsales.com/en/](http://shestakovyachtsales.com/en/)

## Telephones

---

USA: +1(954)274-4435

## Office hours

---

Monday – Saturday: **9:00 - 21:00** EDT

Sunday: **closed**

## Address

---



Harbour Towne Marina, 850 NE 3rd St,  
STE 213, Dania, FL 33004