

QUICK FIX — BENETEAU



Builder: BENETEAU

Year Built: 2005

Model: Cruising Sailboat

Price: PRICE ON APPLICATION

Location: United States

LOA: 33' 0" (10.06m)

Beam: 11' 4" (3.45m)

Min Draft: 4' 3" (1.30m)

Our experienced yacht broker, Andrey Shestakov, will help you choose and buy a yacht that best suits your needs **Quick Fix — BENETEAU** from our catalogue. Presently, at Shestakov Yacht Sales Inc., we have a wide variety of yachts available on our sale's list. We also work in close contact with all the big yacht manufacturers from all over the world.

If you would like to buy a yacht **Quick Fix — BENETEAU** or would like help answering any questions concerning purchasing, selling or chartering a yacht, please call **+1(954)274-4435**

TABLE OF CONTENTS

TABLE OF CONTENTS	2
SPECIFICATIONS	5
Overview	5
Basic Information	5
Dimensions	5
Speed, Capacities and Weight	5
Accommodations	5
Hull and Deck Information	6
Engine Information	6
DETAILED INFORMATION	7
Overview	7
Exclusions	9
Disclaimer	9
PHOTOS	10
040	10
016	10
039	10
041	10
009	10
020	10
011	11
019	11
045	11
018	11
021	11
044	11
048	12
031	12

029	12
024	12
049	12
042	12
037	13
047	13
028	13
033	13
012	13
015	13
008	14
025	14
023	14
027	14
005	14
0007	14
034	15
006	15
043	15
017	15
013	15
046	15
026	16
010	16
035	16
002	16
014	16
001	16
032	17

004	17
022	17
030	17
036	17
003	17
038	18
CONTACTS	19
Contact details	19
Telephones	19
Office hours	19
Address	19

SPECIFICATIONS

Overview

Price Just Reduced!

“Quick Fix” is a very well maintained performance cruiser that has served its owners well. In great shape inside and out this boat is ready to go. The unique saloon table can be raised to the ceiling for more space or easily lowered and used for a gathering point in the cabin. The interior woodwork and upholstery are in very good condition and provide comfort in style.

Basic Information

Category: Cruising Sailboat

Sub Category: Sloop

Model Year: 2005

Year Built: 2005

Country: United States

Dimensions

LOA: 33' 0" (10.06m)

LWL: 25' 4" (7.72m)

Beam: 11' 4" (3.45m)

Min Draft: 4' 3" (1.30m)

Speed, Capacities and Weight

Displacement: 11173 Pounds

Water Capacity: 40 Gallons

Holding Tank: 24 Gallons

Fuel Capacity: 18 Gallons

Accommodations

Total Cabins: 1

Total Heads: 1

Hull and Deck Information

Hull Material: Fiberglass

Engine Information

Engines: 1

Manufacturer: Yanmar

Model: 3YM30

Engine Type: Inboard

Fuel Type: Diesel

DETAILED INFORMATION

Overview

Engine:

- Yanmar Model: 3YM30
- Engine Type: Inboard
- Engine/Fuel Type: Diesel
- Engine Power: 29 HP

Main Saloon

- Air Conditioning
- Dropdown Dining Table to easily convert to a Double Berth
- Opening Overhead Hatch w/sun shade
- Side Opening Ports
- Composite Teak Flooring Throughout

Roomy Head

- Jabsco Head
- Sink and Vanity
- Shower

Large Aft Cabin with Great Ventilation

- Spacious Queen size Berth
- Built In Hanging Locker
- Opening Hatch w/sun shade
- 2 Opening Ports

- 2 Side Reading Lights

Equipment

- In mast furling Mainsail
- Roller furling Furling Genoa
- Lines led aft for easy singlehanding
- Raymarine Wind Speed/Apparent wind
- Raymarine Tridata Dept/Speed/Trip
- Raymarine Helm Autopilot
- Standard Horizon GPS/Chart
- ICOM VHF Radio
- Flat Screen LCD Television
- Air Conditioning
- 10 lb Propane Tank
- 2 Lewmar 40 self-tailing primaries
- 1 Lewmar cabin top halyard winch
- 2 winch handles
- Rigid Boom Vang
- VC17 Bottom Paint
- Sail Cover, Helm Cover
- Dodger/Bimini
- Chart Table
- 6 Gallon Hot Water Heater
- Updated New Found Metal Stainless Port Windows
- Marine Head
- Ice Box/12V Fridge/Freezer
- Cockpit Cushions
- 3 Burner Propane Cook Top Stove w/Oven
- AM/FM CD with Speakers
- Interior Cushions are in excellent condition
- Manual Whale bilge pump
- Rule 500 auto bilge pump
- Pedestal Compass
- 3 12volt Circulating fans
- Horseshoe Bouy
- Fire Extinguishers
- 4 Fenders
- Shorepower Cords
- Shipping/storage cradle

Exclusions

Owner's personal belongings.

Disclaimer

The Company offers the details of this vessel or yacht in good faith but cannot guarantee or warrant the accuracy of this information nor warrant the condition of the vessel. A buyer should instruct his representatives, agents, or his surveyors, to investigate such details as the buyer desires validated. This vessel or yacht is offered subject to prior sale, price change, or withdrawal without notice.

PHOTOS

040



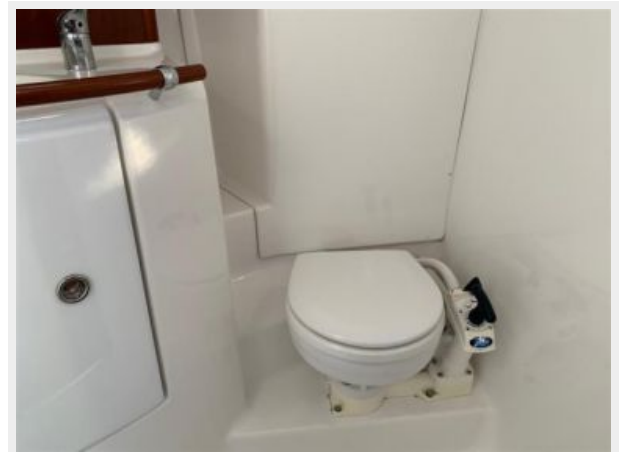
016



039



041



009



020



011



019



045



018



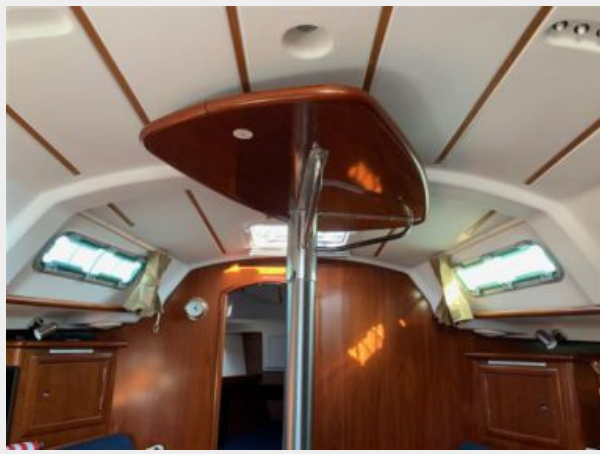
021



044



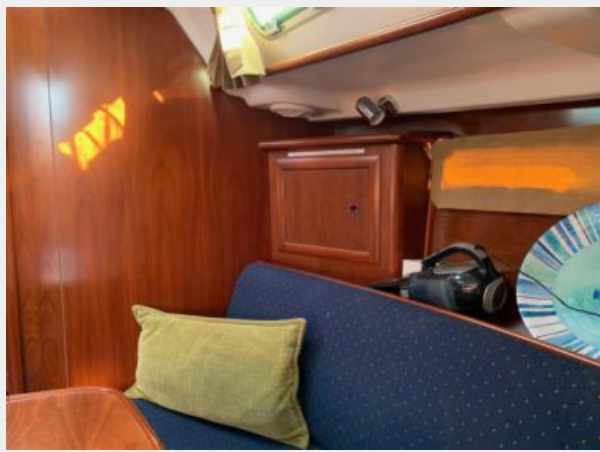
048



031



029



024



049



042



037



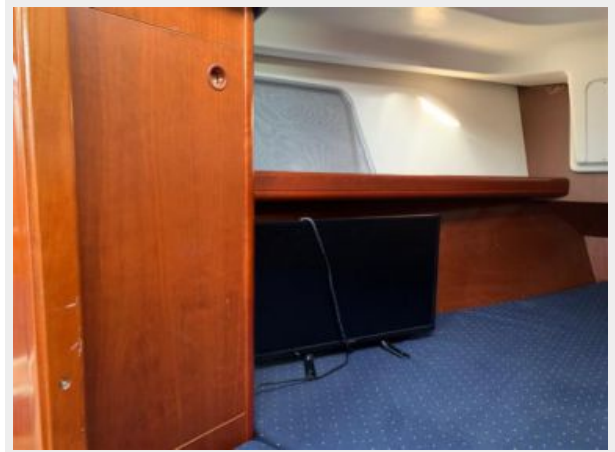
047



028



033



012



015



008



025



023



027



005



0007



034



006



043



017



013



046



026



010



035



002



014



001



032



004



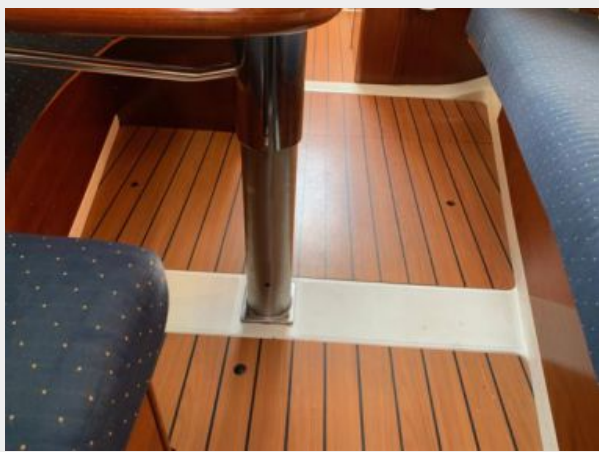
022



030



036



003



038



CONTACTS

Andrey Shestakov, leading yacht broker of the sales department of Shestakov Yacht Sales Inc. Shestakov Yacht Sales Inc., the official representative of the Miami/Fort Lauderdale FL headquarters.

Contact details

Email: andrey@shestakovyachtsales.com

Web: shestakovyachtsales.com/en/

Telephones

USA: +1(954)274-4435

Office hours

Monday – Saturday: **9:00 - 21:00** EDT

Sunday: **closed**

Address



Harbour Towne Marina, 850 NE 3rd St,
STE 213, Dania, FL 33004