

C'EST LA VIE



Year Built: 2004

Model: Motor Yacht

Price: PRICE ON APPLICATION

LOA: 65' (19.81mm)

Beam: 18.91

Min Draft: 5' (1.52mm)

Max Draft: 5' 2" (1.57mm)

Cruise Speed: 24 Knots Kts. (28 MPH)

Max Speed: 30 Knots Kts. (35 MPH)

Our experienced yacht broker, Andrey Shestakov, will help you choose and buy a yacht that best suits your needs **C'EST LA VIE** — n/a from **our catalogue**. Presently, at **Shestakov Yacht Sales Inc.**, we have a wide variety of yachts available on **our sale's list**. We also work in close contact with all the big **yacht manufacturers** from all over the world.

If you would like to buy a yacht **C'EST LA VIE** — n/a or would like help answering any questions concerning purchasing, selling or chartering a yacht, please call **+1(954)274-4435**

TABLE OF CONTENTS

TABLE OF CONTENTS	2
SPECIFICATIONS	6
Basic Information	6
Dimensions	6
Speed, Capacities and Weight	6
Accommodations	6
Hull and Deck Information	6
Engine Information	7
PHOTOS	8
Salon Looking Forward	8
Salon Settee to Port	8
Salon to Starboard	8
Salon to Starboard	8
Salon Portside Looking Aft	8
Salon Looking Aft	8
Galley Looking to Port	9
Galley Looking Aft	9
Galley Refrigerator Drawers	9
Galley Looking Forward	9
Galley to Starboard	9
Galley Beverage Center & Freezer	9
Galley Looking Aft	10
Dinette	10
Dinette with Table Up	10
Lower Helm	10
Above Lower Helm	10
Helm Panel	10
Helm to Starboard	11

Accommodation Stairs	11
Accommodation Stairs Electrical Panel	11
Accommodation Stairs Art Niche	11
VIP Entrance	11
VIP Looking Forward	11
VIP to Starboard	12
VIP Looking Aft	12
Bow Thruster Below VIP	12
Water Heaters Below VIP	12
VIP Head	12
VIP Shower	12
Starboard Guest Cabin Looking Forward	13
Starboard Guest Cabin Looking Aft	13
Starboard Guest Cabin Head	13
Master Looking Aft	13
Master Looking to Port	13
Master Looking to Starboard	13
Master Looking Forward	14
Master Walk In Locker	14
Master Head	14
Master Head Looking Starboard	14
Master Shower	14
Laundry Room	14
Side Deck	15
Bow	15
Windlass Detail	15
Bow	15
Bow Locker w/Vent	15
Lower Windshield	15

Aft Deck	16
Aft Deck Bar	16
Aft Deck Table	16
Flybridge Steps	16
Starboard Side Aft Deck Controls	16
Flybridge Seating	16
Flybridge Bar	17
Flybridge Helm	17
Flybridge Helm Portside Detail	17
Flybridge Helm Portside Detail	17
Flybridge Helm Starboard Side Detail	17
Flybridge Helm Starboard Side Detail	17
Double Stidd Companion Seat	18
Dual Electric Sunroof	18
Coach Roof Equipment	18
Coach Roof Mast	18
Engine Room Forward	18
Engine Room Forward	18
Starboard Engine	19
Port Engine	19
Forward of Starboard Engine	19
AC Plants aft of Starboard Engine	19
Forward of Port Engine	19
Starboard 27 KW Gen	19
Lazarette to Starboard	20
Lazarette to Port	20
Stern Shot	20
Swim Platform	20
Alternate Profile	20

Alternate Profile	20
Stern Quarter	21
Summer Storage	21
Summer Storage	21
CONTACTS	22
Contact details	22
Telephones	22
Office hours	22
Address	22

SPECIFICATIONS

Basic Information

Category: Motor Yacht

Sub Category: Flybridge

Model Year: 2004

Year Built: 2004

Dimensions

LOA: 65' (19.81mm)

Beam: 18.91

Min Draft: 5' (1.52mm)

Max Draft: 5' 2" (1.57mm)

Speed, Capacities and Weight

Cruise Speed: 24 Knots Kts. (28 MPH) **Max Speed:** 30 Knots Kts. (35 MPH)

Gross Tonnage: 50 Pounds

Water Capacity: 300 Gallons

Holding Tank: 200 Gal Gallons

Fuel Capacity: 1400 Gal Gallons

Accommodations

Total Cabins: 3

Total Berths: 4

Sleeps: 6

Total Heads: 3

Hull and Deck Information

Hull Material: Fiberglass

Deck Material: Fiberglass

Hull Configuration: Deep Vee

Hull Designer: F Mulder

Exterior Designer: Neptunus

Interior Designer: Neptunus

Engine Information

Engines: 2

Manufacturer: MTU

Engine Type: Inboard

Fuel Type: Diesel

PHOTOS

Salon Looking Forward



Salon Settee to Port



Salon to Starboard



Salon to Starboard



Salon Portside Looking Aft



Salon Looking Aft



Galley Looking to Port



Galley Looking Aft



Galley Refrigerator Drawers



Galley Looking Forward



Galley to Starboard



Galley Beverage Center & Freezer



Galley Looking Aft



Dinette



Dinette with Table Up



Lower Helm



Above Lower Helm



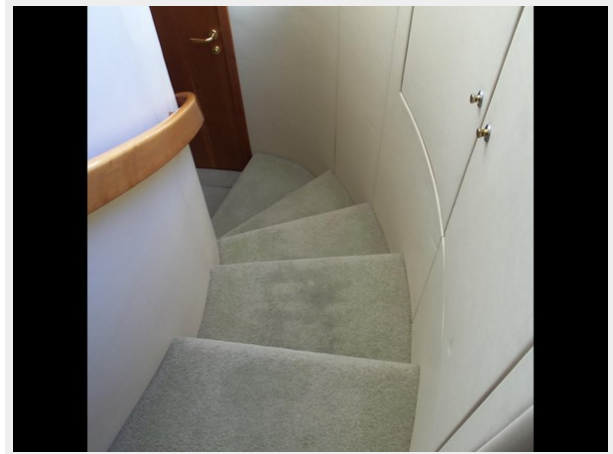
Helm Panel



Helm to Starboard



Accommodation Stairs



Accommodation Stairs Electrical Panel



Accommodation Stairs Art Niche



VIP Entrance



VIP Looking Forward



VIP to Starboard



VIP Looking Aft



Bow Thruster Below VIP



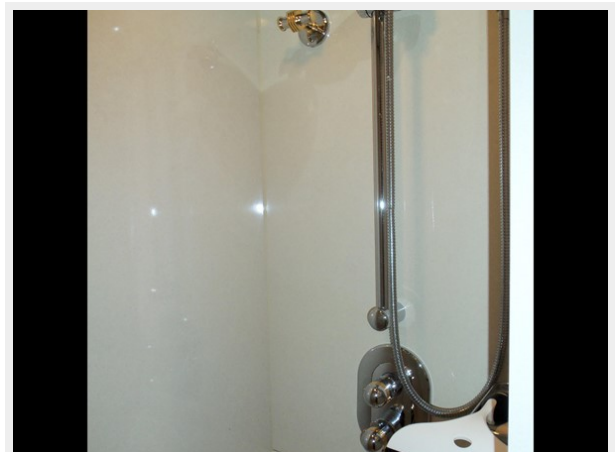
Water Heaters Below VIP



VIP Head



VIP Shower



Starboard Guest Cabin Looking Forward



Starboard Guest Cabin Looking Aft



Starboard Guest Cabin Head



Master Looking Aft



Master Looking to Port



Master Looking to Starboard



Master Looking Forward



Master Walk In Locker



Master Head



Master Head Looking Starboard



Master Shower



Laundry Room



Side Deck



Bow



Windlass Detail



Bow



Bow Locker w/Vent



Lower Windshield



Aft Deck



Aft Deck Bar



Aft Deck Table



Flybridge Steps



Starboard Side Aft Deck Controls



Flybridge Seating



Flybridge Bar



Flybridge Helm



Flybridge Helm Portside Detail



Flybridge Helm Portside Detail



Flybridge Helm Starboard Side Detail



Flybridge Helm Starboard Side Detail



Double Stidd Companion Seat



Dual Electric Sunroof



Coach Roof Equipment



Coach Roof Mast



Engine Room Forward



Engine Room Forward



Starboard Engine



Port Engine



Forward of Starboard Engine



AC Plants aft of Starboard Engine



Forward of Port Engine



Starboard 27 KW Gen



Lazarette to Starboard



Lazarette to Port



Stern Shot



Swim Platform



Alternate Profile



Alternate Profile



Stern Quarter



Summer Storage



Summer Storage



CONTACTS

Andrey Shestakov, leading yacht broker of the sales department of Shestakov Yacht Sales Inc. Shestakov Yacht Sales Inc., the official representative of the Miami/Fort Lauderdale FL headquarters.

Contact details

Email: **andrey@shestakovyachtsales.com**

Web: shestakovyachtsales.com/en/

Telephones

USA: **+1(954)274-4435**

Office hours

Monday – Saturday: **9:00 - 21:00** EDT

Sunday: **closed**

Address



Harbour Towne Marina, 850 NE 3rd St, STE 213, Dania, FL 33004