

CAROLINE — CABOT CRAFT



Builder: CABOT CRAFT

Year Built: 1976

Model: Sloop

Price: PRICE ON APPLICATION

Location: United States

LOA: 36' 0" (10.97m)

Beam: 0' 8" (0.20m)

Max Draft: 4' 9" (1.45m)

Our experienced yacht broker, Andrey Shestakov, will help you choose and buy a yacht that best suits your needs **Caroline — CABOT CRAFT** from our catalogue. Presently, at Shestakov Yacht Sales Inc., we have a wide variety of yachts available on our sale's list. We also work in close contact with all the big yacht manufacturers from all over the world.

If you would like to buy a yacht **Caroline — CABOT CRAFT** or would like help answering any questions concerning purchasing, selling or chartering a yacht, please call **+1(954)274-4435**

TABLE OF CONTENTS

| | |
|------------------------------|----|
| TABLE OF CONTENTS | 2 |
| SPECIFICATIONS | 5 |
| Overview | 5 |
| Basic Information | 5 |
| Dimensions | 5 |
| Speed, Capacities and Weight | 5 |
| Accommodations | 5 |
| Hull and Deck Information | 6 |
| Engine Information | 6 |
| DETAILED INFORMATION | 7 |
| MAIN DESCRIPTION | 7 |
| Accommodations | 7 |
| RECENT UPGRADES | 7 |
| Electronics | 7 |
| EQUIPMENT | 8 |
| MANUFACTURER DESCRIPTION | 8 |
| DISCLAIMER | 8 |
| Exclusions | 8 |
| Disclaimer | 8 |
| PHOTOS | 9 |
| Pic 118 | 9 |
| Pic 306 | 9 |
| Pic 402 | 9 |
| Pic 100 | 9 |
| Pic 404 | 10 |
| Pic 501 | 10 |
| Pic 701 | 10 |
| Pic 800 | 10 |

| | |
|----------|----|
| Pic 301 | 11 |
| Pic 113 | 11 |
| Pic 305 | 11 |
| Pic 115 | 11 |
| pic 406 | 12 |
| Pic 110 | 12 |
| Pic 400 | 12 |
| Pic 500 | 12 |
| Pic 119 | 13 |
| Pic 300 | 13 |
| Pic 702 | 13 |
| Pic 112 | 13 |
| Pic 302 | 14 |
| Pic 813 | 14 |
| Pic 304 | 14 |
| Pic 811 | 14 |
| Pic 303 | 15 |
| Pic 401 | 15 |
| Pic 111 | 15 |
| Pic 102 | 15 |
| Pic 801 | 16 |
| Pic 105 | 16 |
| Pic 810 | 16 |
| Pic 106 | 16 |
| Pic 116 | 17 |
| pict 103 | 17 |
| Pic 700 | 17 |
| Pic 802 | 17 |
| Pic 114 | 18 |

| | |
|-----------------|----|
| Pic 104 | 18 |
| Pic 200 | 18 |
| Pic 201 | 18 |
| Pic 109 | 19 |
| Pic 107 | 19 |
| Pic 108 | 19 |
| pic 602 | 19 |
| pic 703 | 20 |
| pic 601 | 20 |
| pic 000 | 20 |
| pix 490 | 20 |
| pix 301.6 | 20 |
| pic 491 | 20 |
| pic 510 | 21 |
| pic 495 | 21 |
| Pic 600 | 21 |
| pic 301.5 | 21 |
| pic 112.6 | 22 |
| pic 493 | 22 |
| pic 301.7 | 22 |
| pic 112.5 | 22 |
| CONTACTS | 23 |
| Contact details | 23 |
| Telephones | 23 |
| Office hours | 23 |
| Address | 23 |

SPECIFICATIONS

Overview

Rugged cruiser designed for cruising in the North Atlantic. Check out all the numerous up and improvements to this vessel. 2011 Beta Marine engine with 900 hours. New standing and running rigging and chain plates. New stainless steel port holes. Bottom paint in 2018, New Bimini. Hard Dodger. Check out the complete list of upgrades!!

Basic Information

Category: Sloop

Model Year: 1976

Year Built: 1976

Country: United States

Dimensions

LOA: 36' 0" (10.97m)

LWL: 29' 8" (9.04m)

Beam: 0' 8" (0.20m)

Max Draft: 4' 9" (1.45m)

Clearance: 47' 0" (14.33m)

Speed, Capacities and Weight

Water Capacity: 129 Gallons

Holding Tank: 33 Gallons

Fuel Capacity: 36 Gallons

Accommodations

Total Cabins: 1

Total Berths: 4

Total Heads: 1

Hull and Deck Information

Hull Material: Fiberglass

Engine Information

Engines: 1

Manufacturer: Beta Mariner

Model: Beta Marine B-38HE

Engine Type: Inboard

Fuel Type: Diesel

DETAILED INFORMATION

MAIN DESCRIPTION

Rugged cruiser designed for cruising in the North Atlantic. Check out all the numerous up and improvements to this vessel. 2011 Beta Marine engine with 900 hours. New standing and running rigging and chain plates. New stainless steel port holes. Bottom paint in 2018, New Bimini. Hard Dodger. Check out the complete list of upgrades!!

Accommodations

Forward cabin is a 6 foot 4 inch V birth with new new foam and fabric added in 2017, Privacy doors to the salon and the head. Opening Port lights to port and starboard. Moving aft is the head to port and storage and hanging locker to starboard. U-shape settee to port with convertible dinette. Mahogany table. Straight settee/birth to starboard. Cushions have new foam and fabric (2018). Aft is U-shape galley to port. pressure water, top loading freezer, fridge. and LPG SMEV stainless steel stove with oven. Nav station to starboard. Quarter birth to starboard.

RECENT UPGRADES

- New ac/dc electrical cables 2017
- New ac/dc electrical panels, 2017
- New inverter/charger, 2017
- Professional bottom reglass in 2018
- Bottom paint job 2018
- 2011 Beta marine engine
- All new windows fixed and new port holes in 2018
- New Bimini 2018
- New Running rigging 2018
- New standing rigging 2018
- New roller furler 2018
- New v berth foam and fabric 2017
- New settee foam and fabric 2018
- New Firefly oasis batteries 2017
- New plumbing 2018
- New jabsco water pump in galley
- Sea cock maintenance in March 2018, 3 new ones installed.
- New raw water strainer, July 2019
- New fuel water separator, 2017

Electronics

Raymarine AutopilotVHFDept sounderStereo

EQUIPMENT

Roller FurlingSimpson Lawrence 555 double action manual windlass 3 anchors including Bruce 35lbs and 15 ft of chainStainless steel dinghy davits10 ft. foldable RIB dinghy3.5 hp evindrude outboard engine80 watts solar panel with regulatorWind VaneInverter / charger4 ea 31 group batteries - new in 2017Air Conditioning (RV type)

MANUFACTURER DESCRIPTION

The vessel is designed to take a "bite" out of the aft section of the traditional full keel, giving greater steerage in reverse. Intended for cruising in comfort in North Atlantic conditions, the Cabot 36 included an ample gallery and storage below and her construction is rugged, with a core airex foam.

DISCLAIMER

The Company offers the details of this vessel in good faith but cannot guarantee or warrant the accuracy of this information nor warrant the condition of the vessel. A buyer should instruct his agents, or his surveyors, to investigate such details as the buyer desires validated. This vessel is offered subject to prior sale, price change, or withdrawal without notice.

Exclusions

Owner's personal belongings.

Disclaimer

The Company offers the details of this vessel or yacht in good faith but cannot guarantee or warrant the accuracy of this information nor warrant the condition of the vessel. A buyer should instruct his representatives, agents, or his surveyors, to investigate such details as the buyer desires validated. This vessel or yacht is offered subject to prior sale, price change, or withdrawal without notice.

PHOTOS

Pic 118



Pic 306



Pic 402



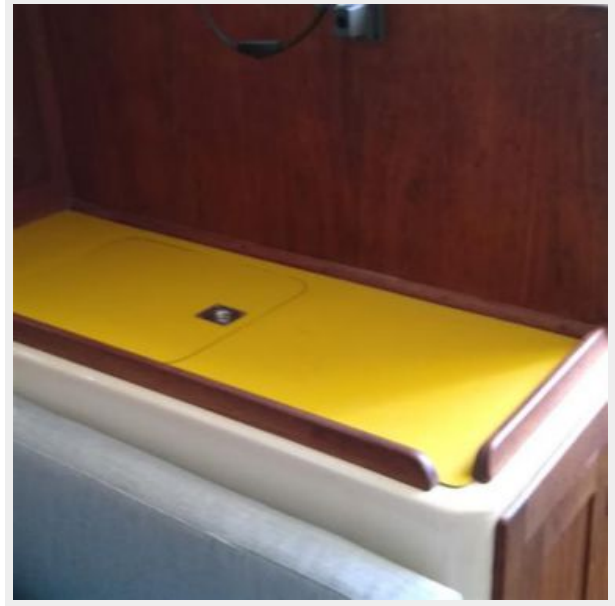
Pic 100



Pic 404



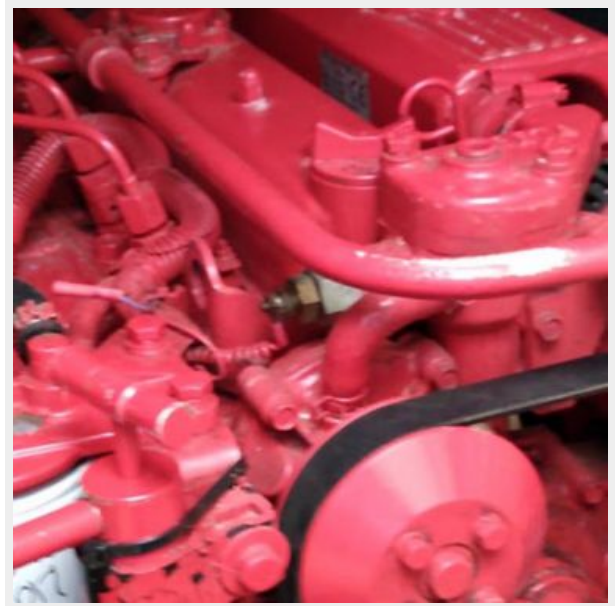
Pic 501



Pic 701



Pic 800



Pic 301



Pic 113



Pic 305



Pic 115



pic 406



Pic 110



Pic 400



Pic 500



Pic 119



Pic 300



Pic 702



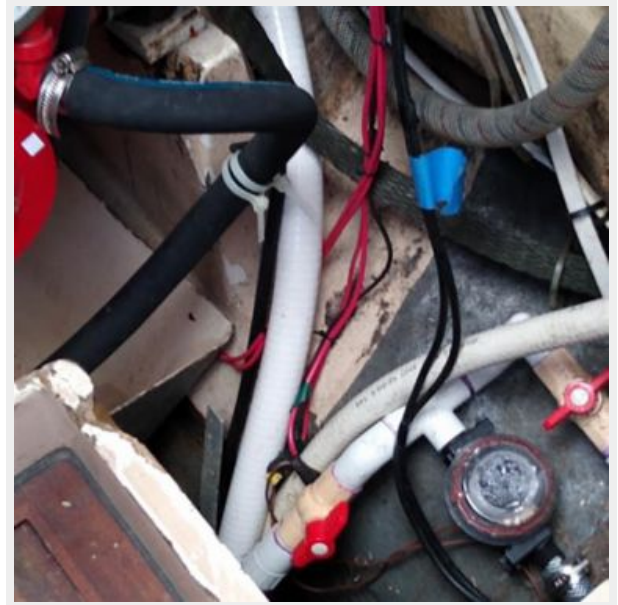
Pic 112



Pic 302



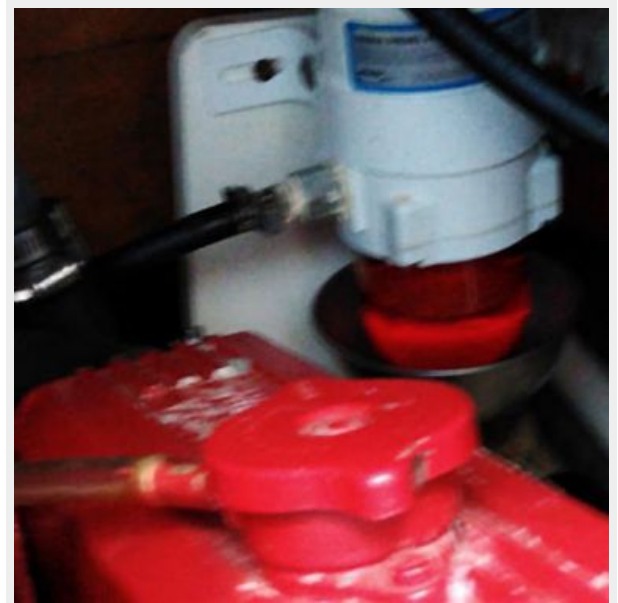
Pic 813



Pic 304



Pic 811



Pic 303



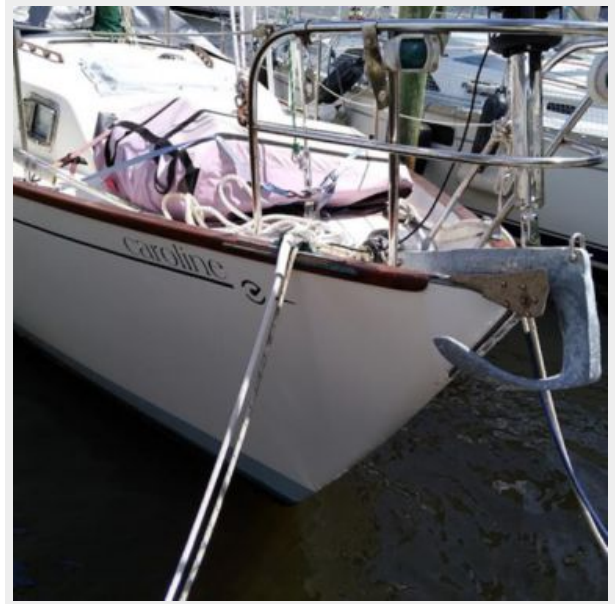
Pic 401



Pic 111



Pic 102



Pic 801



Pic 105



Pic 810



Pic 106



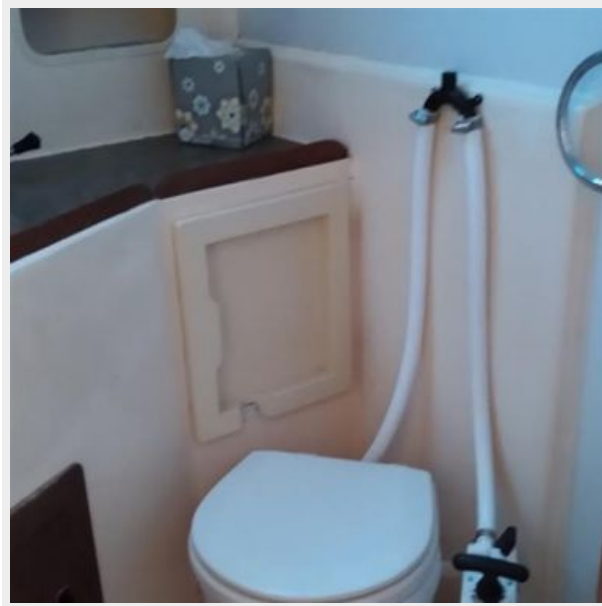
Pic 116



pict 103



Pic 700



Pic 802



Pic 114



Pic 104



Pic 200



Pic 201



Pic 109



Pic 107



Pic 108



pic 602



pic 703



pic 601



pic 000



pic 490



pic 301.6



pic 491



pic 495



pic 510



Pic 600



pic 301.5



pic 493



pic 112.6



pic 301.7



pic 112.5



CONTACTS

Andrey Shestakov, leading yacht broker of the sales department of Shestakov Yacht Sales Inc. Shestakov Yacht Sales Inc., the official representative of the Miami/Fort Lauderdale FL headquarters.

Contact details

Email: andrey@shestakovyachtsales.com

Web: shestakovyachtsales.com/en/

Telephones

USA: +1(954)274-4435

Office hours

Monday – Saturday: **9:00 - 21:00** EDT

Sunday: **closed**

Address



Harbour Towne Marina, 850 NE 3rd St,
STE 213, Dania, FL 33004