

WARSAN — WESMAC



Builder: WESMAC

Year Built: 2008

Model: Mega Yacht

Price: PRICE ON APPLICATION

Location: United Arab Emirates

LOA: 181' (55.15mm)

Beam: 37.04

Max Draft: 15' 6" (4.7mm)

Cruise Speed: 13 Knots Kts. (15 MPH)

Our experienced yacht broker, Andrey Shestakov, will help you choose and buy a yacht that best suits your needs Warsan — WESMAC from our catalogue. Presently, at Shestakov Yacht Sales Inc., we have a wide variety of yachts available on our sale's list. We also work in close contact with all the big yacht manufacturers from all over the world.

If you would like to buy a yacht Warsan — WESMAC or would like help answering any questions concerning purchasing, selling or chartering a yacht, please call +1(954)274-4435

TABLE OF CONTENTS

TABLE OF CONTENTS	2
SPECIFICATIONS	3
Overview	3
Basic Information	3
Dimensions	3
Speed, Capacities and Weight	3
Accommodations	3
Hull and Deck Information	4
Engine Information	4
PHOTOS	5
CONTACTS	14
Contact details	14
Telephones	14
Office hours	14
Address	14

SPECIFICATIONS

Overview

This bespoke yacht was designed to incorporate the classic features of the traditional Arabian Dhow. She brings together a combination of luxury and performance with an air of originality and sophistication. She set new benchmarks in blue water cruising for the most discerning of owners. She boasts 8 well-appointed cabins with accommodations for up to 22 guests. The open plan layout and furnishing of the spacious salon create the effect of a floating Majlis. With large windows on both beams giving her a light and airy feeling. The salon serves as a conversation and recreational area with full media entertainment systems and bar facilities.

Basic Information

Category: Mega Yacht

Sub Category: Mega Yacht

Model Year: 2008

Year Built: 2008

Country: United Arab Emirates

Dimensions

LOA: 181' (55.15mm)

LWL: 143' 3" (43.65mm)

Beam: 37.04

Max Draft: 15' 6" (4.7mm)

Speed, Capacities and Weight

Cruise Speed: 13 Knots Kts. (15 MPH)

Water Capacity: 5000 Gallons

Holding Tank: 2500 Gal Gallons

Fuel Capacity: 17500 Gal Gallons

Accommodations

Total Cabins: 8

Sleeps: 22

Crew Cabin: 14

Hull and Deck Information

Hull Material: GRP

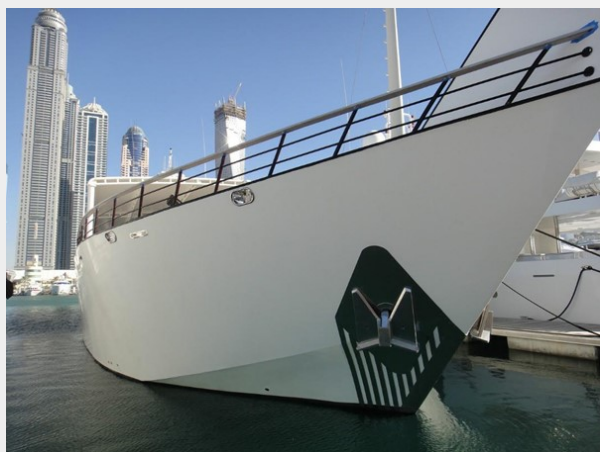
Engine Information

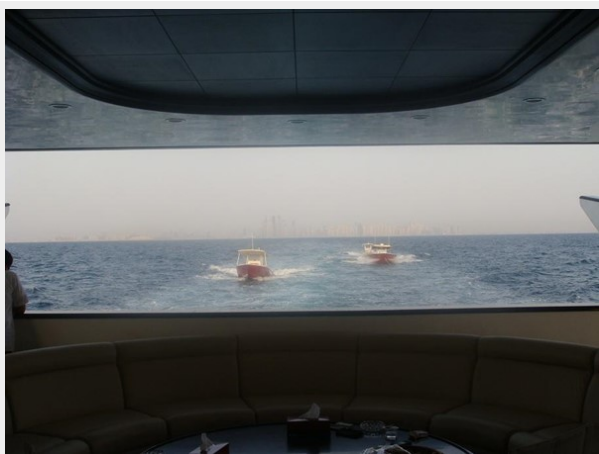
Engines: 2

Manufacturer: Caterpillar

Fuel Type: Diesel

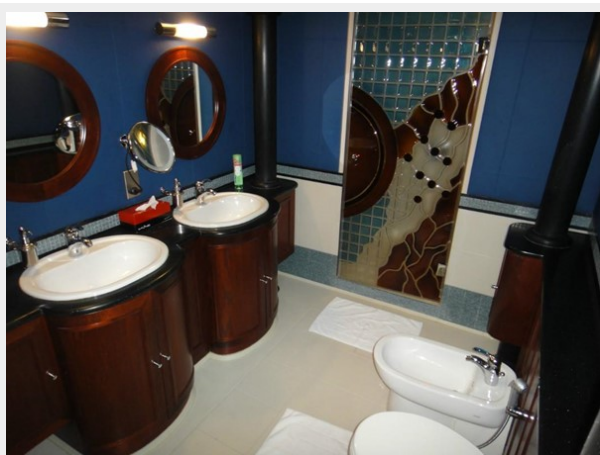
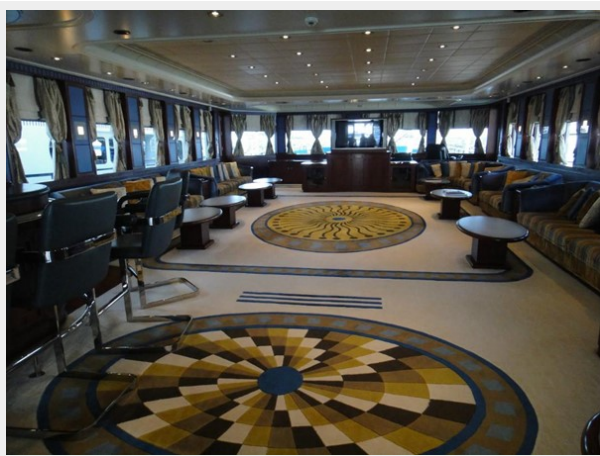
PHOTOS

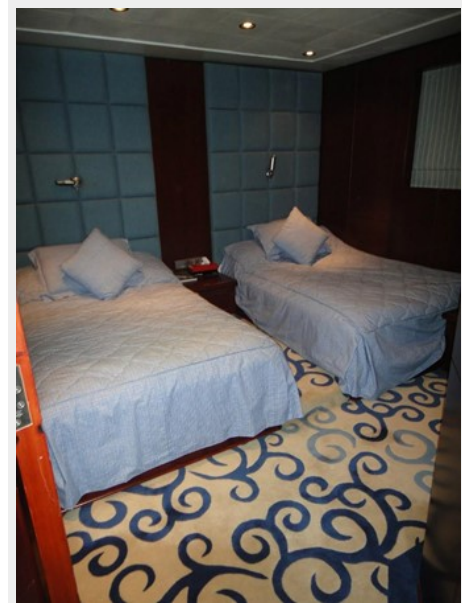


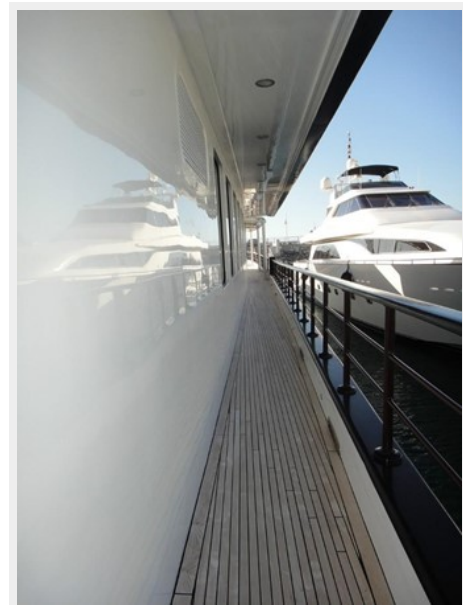


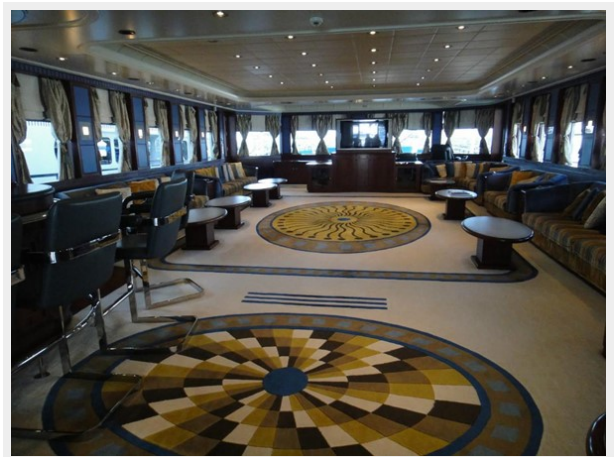
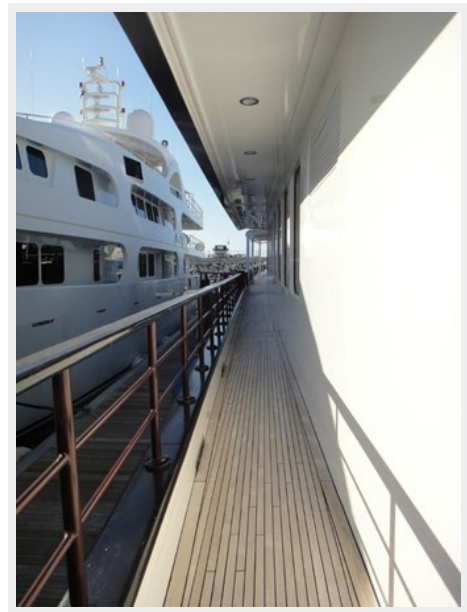






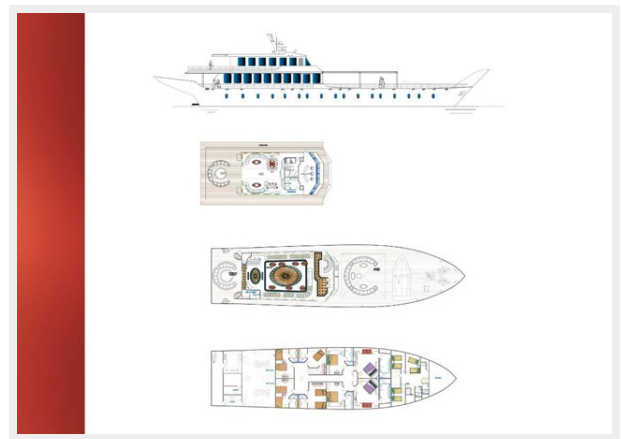






"WARSAN" SPECIFICATIONS

Main Dimensions		Bow Thruster		Fresh water pumps	
Construction	- Glass Reinforced Plastic (GRP)	Make	- Wesmar, USA	Make	- Giannetti srl, Italy
Length overall	- 55.15mtr	Model	- 115hp	Model	- RT 2 MBG
Hull length	- 46.61mtr	Batteries		Quantity	- 2
Length waterline	- 43.65mtr	Wheel house	- 2nos x 24vdc x 200A	Water heaters	
Beam	- 11.29mtr	Wheel house	- 4nos x 12vdc x 160A	Quantity	- 2
Depth	- 4.7mtr	Engine room	- 10nos x 24vdc x 200A	Make	- Giannetti srl
Draft	- 2.21mtr	Engine room	- 4nos x 24vdc x 200A	Capacity	- 100lrs
Displacement, half load	- 422nos	Battery Charger		Anchor windless	
Full load	- 46.5nos	Make	- Master volt	Quantity	- 2
Speed	- 12.5knots	Model	- Mass 24/100	Type	- 2
Tank capacities		Engine room ventilation		Make	- Mair, Australia
Fuel	- 17500l/gal	Inlet fans		Model	- HR 11000
Black water	- 2500l/gal	Make	- Giannetti, Italy	Capstans	
Gray water	- 2500l/gal	Model	- ELI-4502T, 2nos, Midship	Quantity	- 2
Lub oil	- 400l/gal	Our let fans		Type	- Vertical
Main engines		Make	- Giannetti, Italy	Make	- Mair, Australia
Make	- Caterpillar	Model	- VCR-337D, 2nos, Aft	Model	- VC 4000
Model	- 3508 B	Fire fighting pumps		Steering system	
Power power	- 1350hp @1835rpm	Type	- Electric	Type	- Electro Hydraulic
Gear Box		Quantity	- 2nos	Make	- Locombe Smith, France
Make	- Twin Disc, Japan	Engine room fire fighting system		Underwater lights	
Model	- MG 662D-00-A	Type	- Water mist system	Model	- SV 10
Reduction ratio	- 2.42: 1	Capacity	- 2nos x 60lrs	Make	- SeaVision, USA
Generator		Water makers		Accommodation	
Make	- Scania	Quantity	- 2nos	Crew	- 22
Model	- DG 93 MD 4D	Make	- MARNCO	Crew	- 14
Capacity	- 220kVA, 400v x 50Hz	Model	- Aqua mix 200pl	Captain	- Separate cabin
Stabilizers		Capacity	- 900pl/day		
Make	- Noid Dynamics, Halford	Air conditioning system			
Model	- Zero speed stabilizers	Make	- CLD Marine		
		Type	- Chilled water system		
		Model	- HCSO 336/D and HCSL 384/D		



CONTACTS

Andrey Shestakov, leading yacht broker of the sales department of Shestakov Yacht Sales Inc. Shestakov Yacht Sales Inc., the official representative of the Miami/Fort Lauderdale FL headquarters.

Contact details

Email: andrey@shestakovyachtsales.com

Web: shestakovyachtsales.com/en/

Telephones

USA: +1(954)274-4435

Office hours

Monday – Saturday: **9:00 - 21:00** EDT

Sunday: **closed**

Address



Harbour Towne Marina, 850 NE 3rd St,
STE 213, Dania, FL 33004