

PATRICIA ANN — RIVIERA



Builder: RIVIERA

LOA: 48' (14.63m)

Year Built: 1995

Model: Sport Yacht

Price: PRICE ON APPLICATION

Location: United States

Our experienced yacht broker, Andrey Shestakov, will help you choose and buy a yacht that best suits your needs **Patricia Ann — RIVIERA** from our catalogue. Presently, at Shestakov Yacht Sales Inc., we have a wide variety of yachts available on our sale's list. We also work in close contact with all the big yacht manufacturers from all over the world.

If you would like to buy a yacht **Patricia Ann — RIVIERA** or would like help answering any questions concerning purchasing, selling or chartering a yacht, please call **+1(954)274-4435**

TABLE OF CONTENTS

| | |
|---------------------------|----|
| TABLE OF CONTENTS | 2 |
| SPECIFICATIONS | 3 |
| Overview | 3 |
| Basic Information | 4 |
| Dimensions | 4 |
| Accommodations | 4 |
| Hull and Deck Information | 4 |
| Engine Information | 4 |
| PHOTOS | 5 |
| CONTACTS | 16 |
| Contact details | 16 |
| Telephones | 16 |
| Office hours | 16 |
| Address | 16 |

SPECIFICATIONS

Overview

(LOCATION: Marathon FL) The Riviera 48 Convertible has rakish styling and is designed for serious fishing and comfortable cruising. She has a flybridge, cockpit, open salon, and three staterooms to insure comfort, and convenience.

On deck we start at the top with a flybridge with hardtop and full enclosure. With a roomy guest lounge the flybridge combines comfort and function. The upper helm station has Furuno FCV-110I color LCD sounder, Simrad NSS Evo 3 touchscreen GPS nav system, Furuno 62-mile radar, Simrad AP22 autopilot, Robertson AP300X autopilot, Sirius XM marine radio, Icom M602 VHF radio, single side band radio, Ritchie compass, and trim tab, searchlight, and windlass controls. Seating includes captain's and companion chairs.

Below is an open cockpit with awning, fighting chair, prep station, freezer, transom livewell, outriggers, raw & fresh water washdown, swim platform, and underwater lights. Side decks lead forward to a foredeck with stainless steel bow rail, anchor, and windlass.

The cockpit opens to an upscale salon with large windows providing lots of natural light. Teak woodwork, carpeting, and leather upholstery make the interior comfortable and inviting. There is an U-shaped leather sofa with table to port with full galley forward. The lower helm station is to starboard.

There are three staterooms. The master stateroom is starboard with double berth. To port is the guest stateroom with twin bunks. The forward VIP stateroom features an island queen berth, under-berth storage, television, and hanging locker. The private master head has vanity and shower. The guest/day head has vanity and shower.

Patricia Ann is powered by twin MTU 660-hp diesel engines. A Kohler generator provides offshore electrical power, there is a 600 gallon water maker, and reverse cycle HVAC units maintain interior comfort. This Riviera 48 Convertible is well equipped, professionally maintained, and ready to fish or cruise in style. Call now for more information and to schedule a showing.

Basic Information

Category: Sport Yacht

Sub Category: Convertible

Model Year: 1995

Year Built: 1995

Country: United States

Dimensions

LOA: 48' (14.63m)

Accommodations

Total Cabins: 3

Total Heads: 2

Hull and Deck Information

Hull Material: Fiberglass

Engine Information

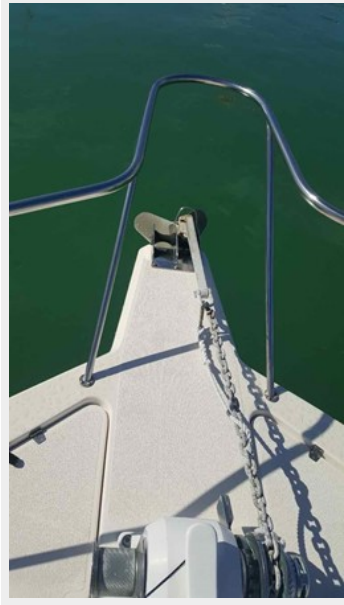
Engines: 2

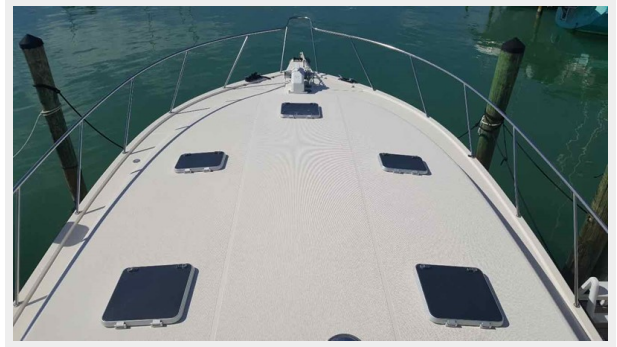
Manufacturer: MTU

Engine Type: Inboard

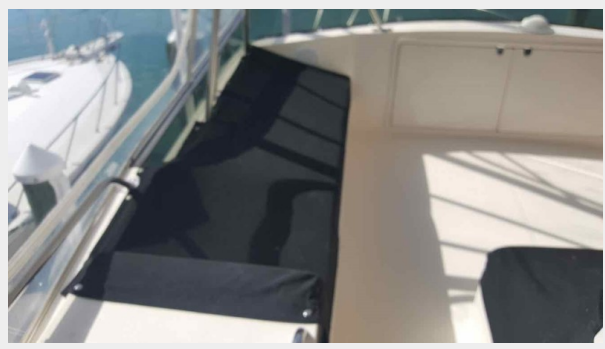
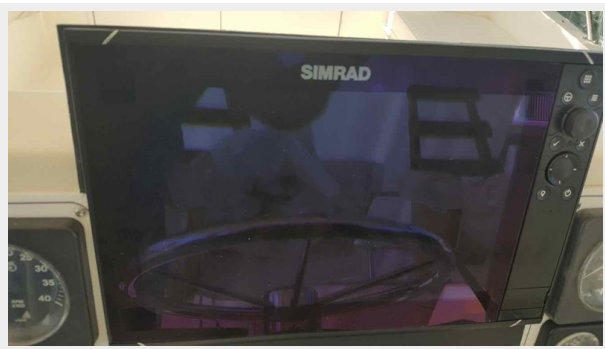
Fuel Type: Diesel

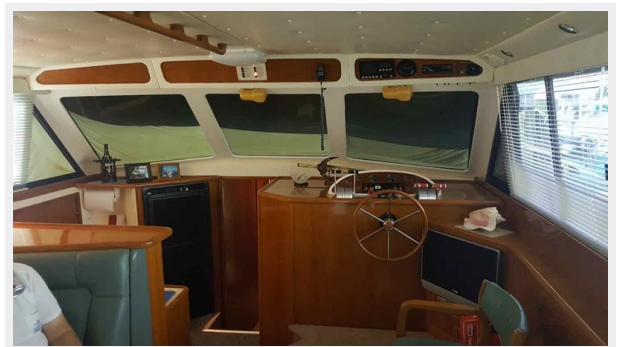
PHOTOS

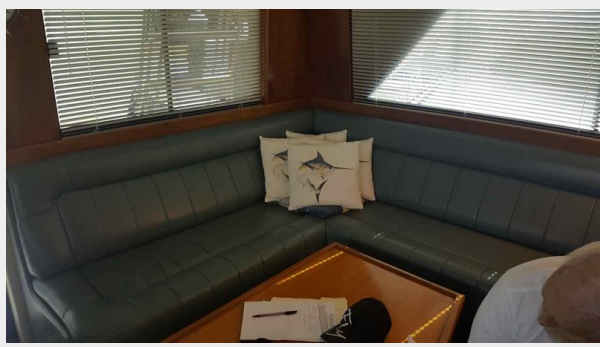


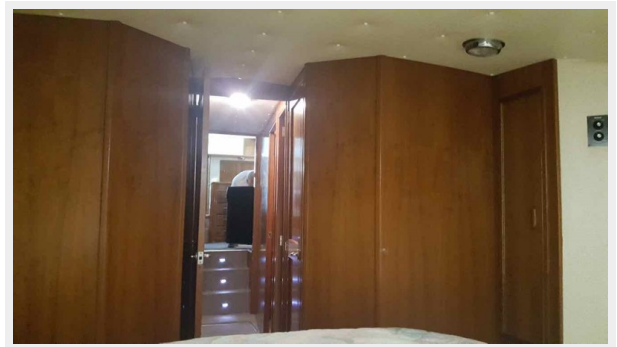
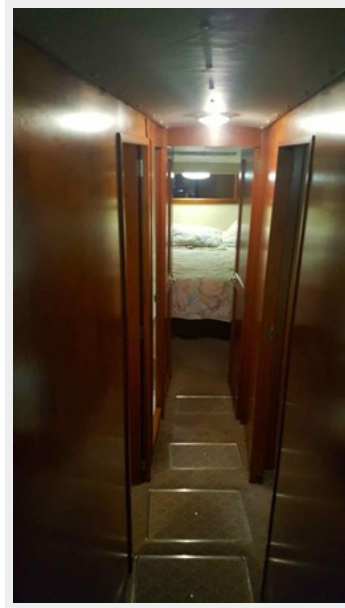


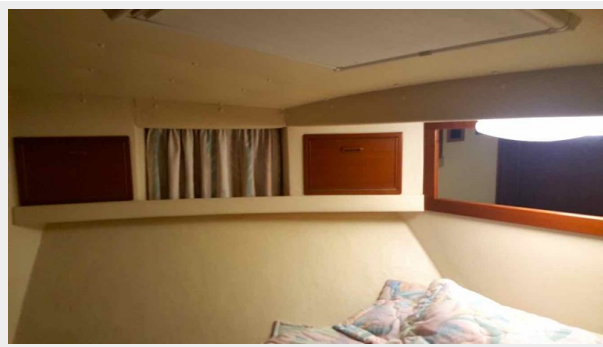
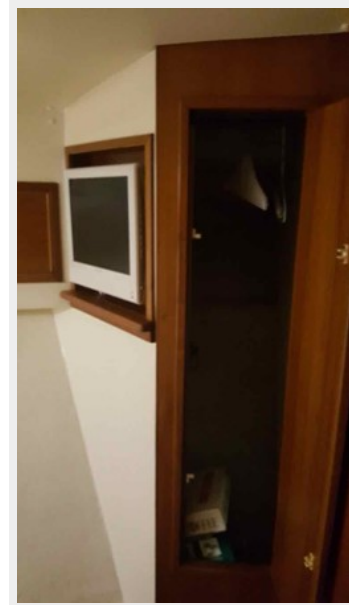
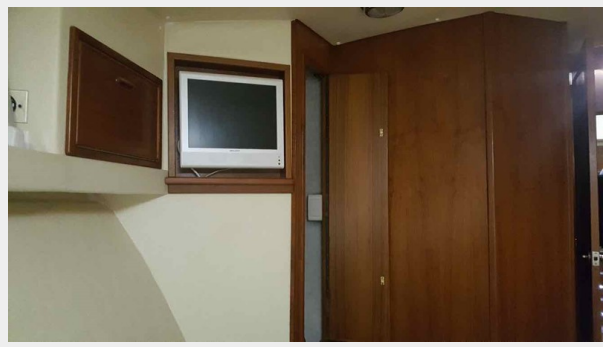


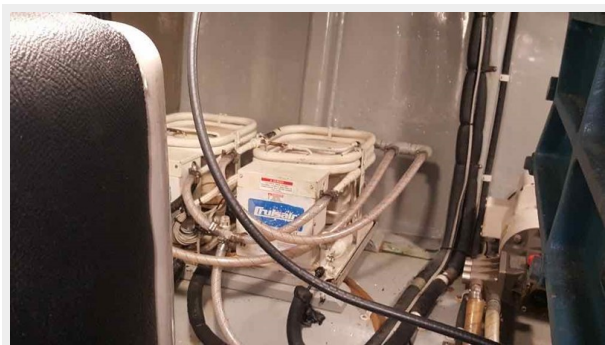
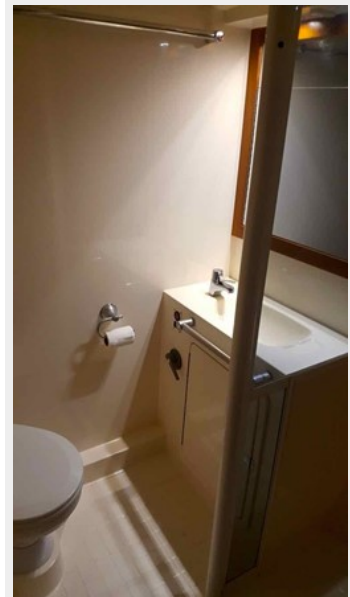
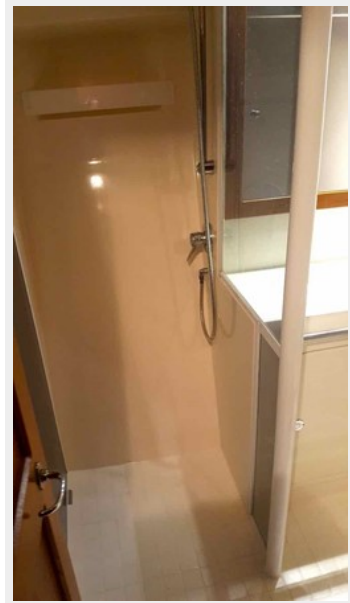


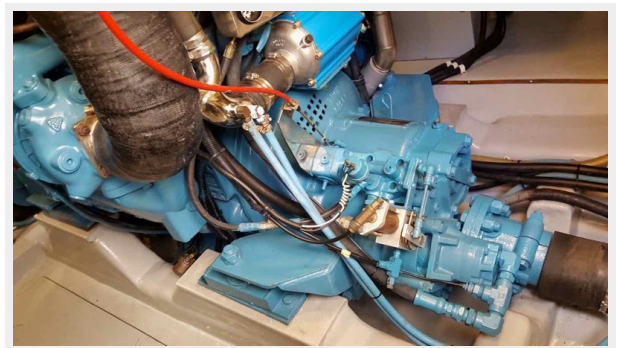
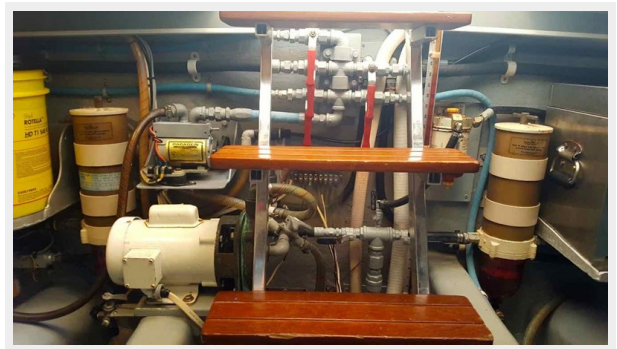














CONTACTS

Andrey Shestakov, leading yacht broker of the sales department of Shestakov Yacht Sales Inc. Shestakov Yacht Sales Inc., the official representative of the Miami/Fort Lauderdale FL headquarters.

Contact details

Email: andrey@shestakovyachtsales.com

Web: shestakovyachtsales.com/en/

Telephones

USA: +1(954)274-4435

Office hours

Monday – Saturday: **9:00 - 21:00** EDT

Sunday: **closed**

Address



Harbour Towne Marina, 850 NE 3rd St,
STE 213, Dania, FL 33004