

1988 MORGAN 41 OUT ISLAND — MORGAN



Builder: MORGAN

Year Built: 1988

Model: Cruising Sailboat

Price: PRICE ON APPLICATION

Location: United States

LOA: 41' 0" (12.50m)

Beam: 13' 0" (3.96m)

Max Draft: 4' 10" (1.47m)

Our experienced yacht broker, Andrey Shestakov, will help you choose and buy a yacht that best suits your needs 1988 Morgan 41 Out Island — MORGAN from our catalogue. Presently, at Shestakov Yacht Sales Inc., we have a wide variety of yachts available on our sale's list. We also work in close contact with all the big yacht manufacturers from all over the world.

If you would like to buy a yacht 1988 Morgan 41 Out Island — MORGAN or would like help answering any questions concerning purchasing, selling or chartering a yacht, please call +1(954)274-4435

TABLE OF CONTENTS

TABLE OF CONTENTS	2
SPECIFICATIONS	6
Overview	6
Basic Information	6
Dimensions	6
Speed, Capacities and Weight	6
Accommodations	7
Hull and Deck Information	7
Engine Information	7
DETAILED INFORMATION	8
Overview	8
Exclusions	8
Disclaimer	8
PHOTOS	9
2	9
3	9
4	9
5	9
6	9
7	9
8	10
9	10
10	10
11	10
12	11
37	11
26	11
25	11

19	12
16	12
15	12
40	12
60	13
27	13
14	13
31	13
22	14
58	14
56	14
20	14
28	15
13	15
68	15
18	15
38	16
29	16
50	16
70	16
57	17
74	17
73	17
30	17
54	18
17	18
32	18
67	18
85	18

51	18
59	19
83	19
61	19
84	19
81	20
77	20
63	20
78	20
41	21
24	21
44	21
69	21
33	21
36	21
71	22
64	22
75	22
45	22
46	22
42	22
35	23
23	23
34	23
48	23
49	23
87	23
72	24
80	24

55	24
21	24
88	24
82	24
47	25
65	25
79	25
52	25
66	25
53	25
86	26
76	26
43	26
39	26
62	26
CONTACTS	27
Contact details	27
Telephones	27
Office hours	27
Address	27

SPECIFICATIONS

Overview

This MORGAN 41 Out Island Classic is sloop rigged with a long fin keel, skeg rudder and keel stepped mast. She has a 44hp Yanmar Diesel and 9.5Kw Westerbeke Generator. Her interior offers a full-width owner's stateroom aft with large double berth, hanging locker, bureau, dressing seat and a private head with separate stall shower. In the passageway moving forward from the aft cabin to port is the navigation area and a large area that can be used as a workbench (always handy when sailing offshore).

She has seventeen opening ports and five hatches throughout. She has teak bulkheads and cabinets, teak and holly sole throughout, a large L-shaped dinette which can convert to a double berth to starboard and a second settee to port with a pilot berth above. There is a large guest cabin forward with private entrance to the second ship's head.

The well laid out L-Shape Galley is aft to starboard, conveniently located by the companionway.. Long-distance cruising, heading down to the islands, this could be the boat. Thank you for your time and consideration.

Basic Information

Category: Cruising Sailboat

Model Year: 1988

Year Built: 1988

Country: United States

Dimensions

LOA: 41' 0" (12.50m)

LWL: 34' 1" (10.39m)

Beam: 13' 0" (3.96m)

Max Draft: 4' 10" (1.47m)

Clearance: 58' 6" (17.83m)

Speed, Capacities and Weight

Displacement: 23000 Pounds

Water Capacity: 215 Gallons

Holding Tank: 45 Gallons

Fuel Capacity: 85 Gallons

Accommodations

Total Cabins: 2

Total Heads: 2

Hull and Deck Information

Hull Material: Fiberglass

Engine Information

Engines: 1

Manufacturer: Yanmar

Model: 4JHE

Engine Type: Inboard

Fuel Type: Diesel

DETAILED INFORMATION

Overview

ACCOMMODATIONS/INTERIOR: Her interior offers an aft cabin with double berth, hanging locker, bureau, dressing seat, private head and stall shower. In the passageway moving forward, there is a navigation station and a large area that can be used as a workbench, very handy when sailing offshore. She has seventeen opening ports and five opening hatches throughout. Teak bulkheads and cabinets, convertible dinette with settee and pilot berth opposite, three hanging lockers and a large U-Shaped Galley. The forward stateroom with private entrance to the forward head, **GALLEY:** Adler Barbour 11 cu. ft. refrigerator with divided top-loading flush mount lids; pressure, manual, dockside freshwater systems; Regal CNG 2-burner stove w/ oven; Omni microwave that broils, bakes and toasts; water heater; double stainless steel sink; Mica on counter surfaces with pot and pan storage; ample cabinet storage and multiple lockers and drawers; freshwater hand pump on galley counter; coffee maker. **ELECTRICAL** 110V AC; 12V DC; 9.5kW Westerbeke diesel generator with 124 hrs; (3) 440 amp hours total batteries, (2) 4D house & engine; 40 am True Charge automatic battery charger; (1) Group 27 genset start battery; ground fault interrupters on AC outlets; Forespar lightning dissipater; 12V outlets throughout; reverse polarity breakers. **MECHANICAL**

- Yanmar 4JHBR, FWC 44 HP
- Yanmar/Kanzaki reduction gear
- Balmar 100 amp Alternator
- Three Blade Bronze Prop

SAILS and RIGGING Battened Main Sail, 135% genoa; Harken roller furling; Lewmar 16st vang/reefing winch; (2) Lewmar 52ST primary winches; (2) Lewmar standard winches on mast; Lewmaar 40ST main-sheet winch; aluminum mast stepped on keel; manual boom vang.

Exclusions

Owner's personal belongings.

Disclaimer

The Company offers the details of this vessel or yacht in good faith but cannot guarantee or warrant the accuracy of this information nor warrant the condition of the vessel. A buyer should instruct his representatives, agents, or his surveyors, to investigate such details as the buyer desires validated. This vessel or yacht is offered subject to prior sale, price change, or withdrawal without notice.

PHOTOS

2



3



4



5



6



7



8



9



10



11



12



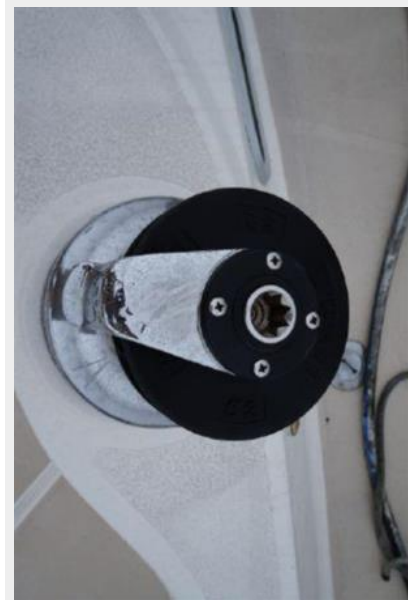
37



26



25



19



16



15



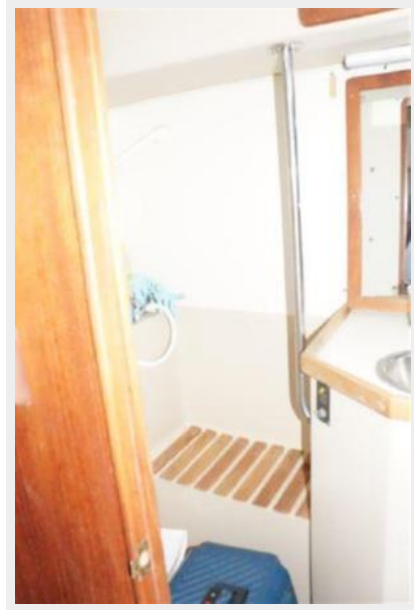
40



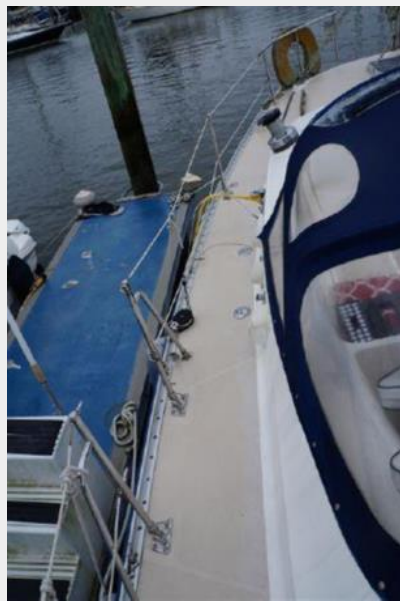
27



60



14



31



22



58



56



20



28



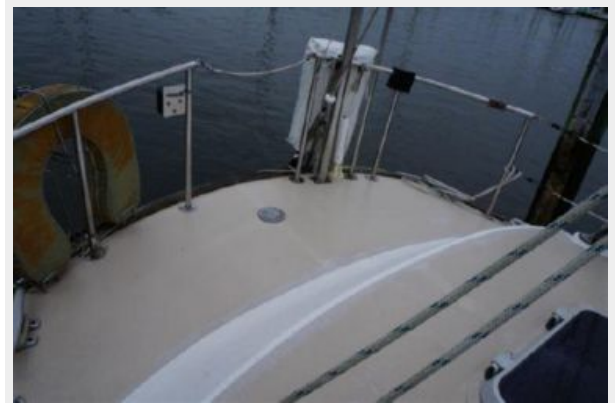
13



68



18



29



38



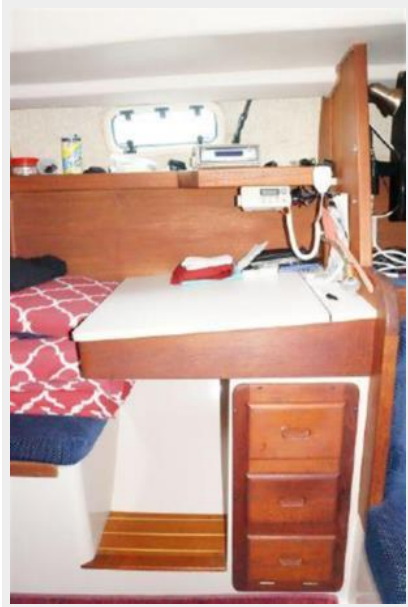
50



70



57



74



73



30



54



17



32



67



85



51



59



83



61



84



77



81



78



63



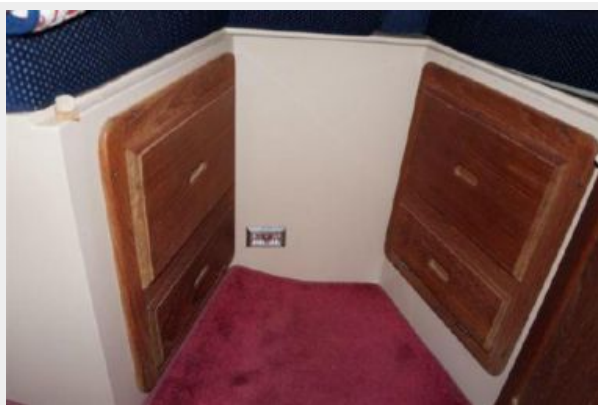
41



24



44



69



33



36



71



64



75



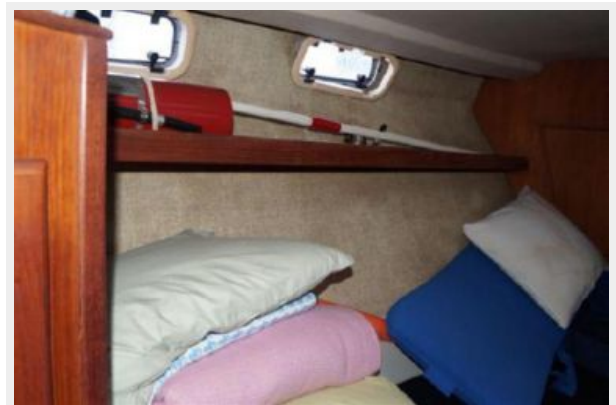
45



46



42



35



23



34



48



49



87



72



80



55



21



88



82



47



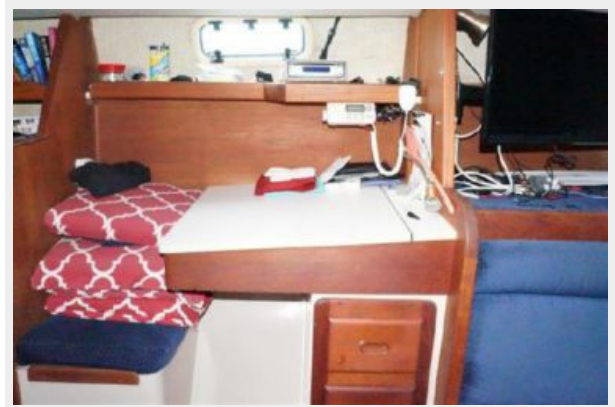
65



79



52



66



53



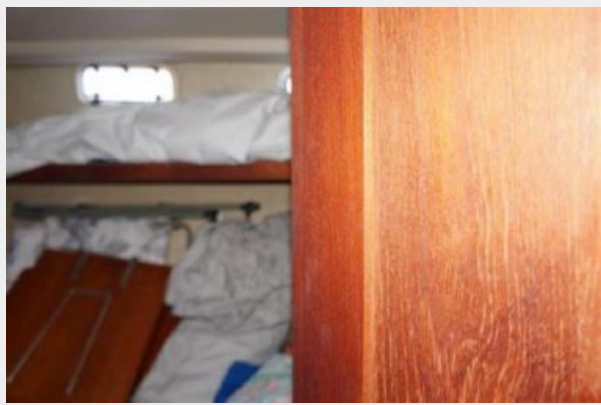
86



76



43



39



62



CONTACTS

Andrey Shestakov, leading yacht broker of the sales department of Shestakov Yacht Sales Inc. Shestakov Yacht Sales Inc., the official representative of the Miami/Fort Lauderdale FL headquarters.

Contact details

Email: andrey@shestakovyachtsales.com

Web: shestakovyachtsales.com/en/

Telephones

USA: +1(954)274-4435

Office hours

Monday – Saturday: **9:00 - 21:00** EDT

Sunday: **closed**

Address



Harbour Towne Marina, 850 NE 3rd St,
STE 213, Dania, FL 33004