

SEA ANGEL — CAPE DORY



Builder: CAPE DORY

Year Built: 1986

Model: Cruising Sailboat

Price: PRICE ON APPLICATION

Location: United States

LOA: 36' 0" (10.97m)

Beam: 10' 6" (3.20m)

Max Draft: 5' 0" (1.52m)

Our experienced yacht broker, Andrey Shestakov, will help you choose and buy a yacht that best suits your needs **Sea Angel — CAPE DORY** from our catalogue. Presently, at Shestakov Yacht Sales Inc., we have a wide variety of yachts available on our sale's list. We also work in close contact with all the big yacht manufacturers from all over the world.

If you would like to buy a yacht **Sea Angel — CAPE DORY** or would like help answering any questions concerning purchasing, selling or chartering a yacht, please call **+1(954)274-4435**

TABLE OF CONTENTS

TABLE OF CONTENTS	2
SPECIFICATIONS	8
Basic Information	8
Dimensions	8
Speed, Capacities and Weight	8
Accommodations	8
Hull and Deck Information	8
Engine Information	8
DETAILED INFORMATION	9
Overview	9
Exclusions	10
Disclaimer	10
PHOTOS	11
55	11
2	11
25	11
88	11
86	12
47	12
89	12
111	12
78	13
30	13
80	13
33	13
5	14
28	14
54	14

38	14
11	15
84	15
83	15
79	15
85	16
99	16
27	16
101	16
20	17
60	17
73	17
90	17
72	18
148	18
91	18
92	18
128	19
149	19
147	19
82	19
105	20
106	20
74	20
102	20
93	21
100	21
112	21
3	21

37	21
16	21
26	22
87	22
104	22
116	22
9	23
39	23
49	23
59	23
36	23
98	23
81	24
18	24
8	24
35	24
76	24
52	24
146	25
34	25
48	25
17	25
113	25
46	25
4	26
7	26
61	26
43	26
109	26

114	26
31	27
13	27
51	27
124	27
22	27
44	27
6	28
94	28
77	28
45	28
50	28
32	28
53	29
42	29
40	29
57	29
70	29
103	29
63	30
108	30
115	30
10	30
125	30
119	30
126	31
110	31
129	31
64	31

122	31
127	31
69	32
75	32
123	32
62	32
58	32
14	32
19	33
56	33
12	33
118	33
96	33
23	33
29	34
95	34
15	34
120	34
107	34
21	34
68	35
97	35
65	35
71	35
66	35
24	35
121	36
41	36
67	36

117	36
133	36
132	36
134	37
135	37
136	37
138	37
137	37
131	37
139	38
143	38
140	38
141	38
130	38
142	38
145	39
144	39
CONTACTS	40
Contact details	40
Telephones	40
Office hours	40
Address	40

SPECIFICATIONS

Basic Information

Category: Cruising Sailboat

Model Year: 1986

Year Built: 1986

Country: United States

Dimensions

LOA: 36' 0" (10.97m)

LWL: 27' 8" (8.43m)

Beam: 10' 6" (3.20m)

Max Draft: 5' 0" (1.52m)

Clearance: 46' 6" (14.17m)

MFG Length: 36' 0" (10.97m)

Speed, Capacities and Weight

Displacement: 16100 Pounds

Water Capacity: 100 Gallons

Holding Tank: 15 Gallons

Fuel Capacity: 51 Gallons

Accommodations

Total Cabins: 2

Total Heads: 1

Hull and Deck Information

Hull Material: Fiberglass

Engine Information

Engines: 1

Manufacturer: Perkins

DETAILED INFORMATION

Overview

ACCOMMODATIONS The interior was handcrafted of teak and other hardwoods and assembled with great care. From the main cabin curved bulkhead enclosing the head to the custom built cabinet doors & curved fiddle trim on the counters the interior reflects a classic elegance. This very solid Cape Dory 36 sleeps six adults in a two cabin layout. V-berth forward sleeps two with seat and filler cushion. (CUSTOM ULTRA SUED CUSHIONS BY S&S) Hanging locker to port and set of drawers to starboard. Next, aft to port is the head with shower and pressure H & C water. Opposite to starboard is a large hanging locker for foul weather gear. The main salon has a center-line drop leaf table for dining. Port bunk converts to spacious double berth. To starboard is a straight settee berth with three roomy drawers behind for storage. A sizable navigation stations sits to starboard and backs up to a double quarter berth. The galley is located to the port side of the companionway. It has a large ice box, deep sink w/ H&C water and storage behind for dishes and dry food and propane stove with oven Opening Brass Port Lights

- The deck is molded in one piece with layers of fiberglass encasing balsa core for stiffening.
- The deck is thru-bolted to the hull's internal flange for ultimate rigidity and integrity.
- A massive teak bowsprit, teak toe rails, coamings & other teak trim are carefully installed to complete the Classic look of the Cape Dory 36
- Double lifelines
- Port and Starboard boarding gates
- Leather wrapped wheel
- Danforth anchor w/ chain and 200' rode
- Anchor Windlass
- 2 opening Hatches
- 2 Dorades
- Dodger, Bimini, Awning and Full Enclosure

SAILS AND RIGGING

- Main Sail: Neil Pride - Full Batten w/Fastrack
- 140% Genoa Furling
- 90% Yankee Jib
- Club footed stay-sail
- Drifter
- 2 Lewmar # 43 Primary Winches
- 1 Lewmar # 16 2 speed winch (cabin top)
- 1 Lewmar # 7 single speed (cabin top)
- Winch covers
- Fico traveler (cabin top)
- Stay-sail boom

MISCELLANEOUS

- Six (6) Dock Lines
- Four (6) Fenders
- Six (6) Life Jackets
- Two (2) Fire Extinguishers
- Air Horn
- Flares
- CUSTOM ULTRA SUEDE INTERIOR CUSHION BU S&S
- Window Screens
- SEA WORTHY 9' Inflatable Dinghy
- Nissan 4hp Four Stroke OB with internal fuel tank
- All new LED Lighting throughout
- Engine and Transmission rebuilt - 2006
- New Aluminum Fuel Tank - 2006

RECENT SERVICE

- NEW CUTLASS BEARING - 2014
- NEW SHAFT SEAL - 2014
- NEW SEWAGE PUMP - 2014
- RECONDITIONED AUTO PILOT FACE - 2016
- REPAIRED, RECHARGE REFER COLD PLATE SYSTEM - 2017
- ALL WINCHES SERVICED - 2018
- REPLACED ALL FOUR (4) AGM BATTERIES WITH NEW - 2018
- REPLACED THE RIGID PORTION OF THE EXHAUST SYSTEM - 2019
- REPLACED BOTH SHIFT AND THROTTLE CABLES - 2019
- REPLACED ALL OF THE WIND INSTRUMENTS, HULL SPEED AND DEPTH INSTRUMENTS - 2019

Exclusions

Owner's personal belongings.

Disclaimer

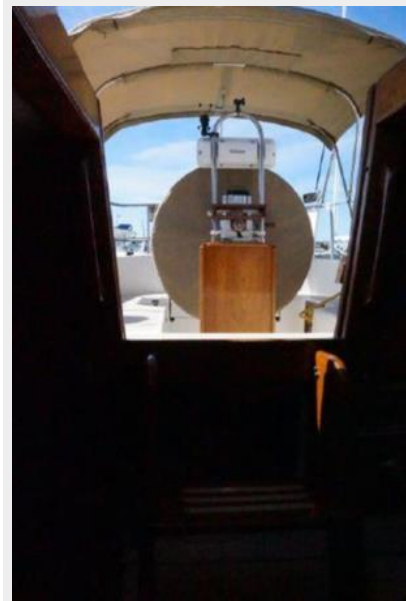
The Company offers the details of this vessel or yacht in good faith but cannot guarantee or warrant the accuracy of this information nor warrant the condition of the vessel. A buyer should instruct his representatives, agents, or his surveyors, to investigate such details as the buyer desires validated. This vessel or yacht is offered subject to prior sale, price change, or withdrawal without notice.

PHOTOS

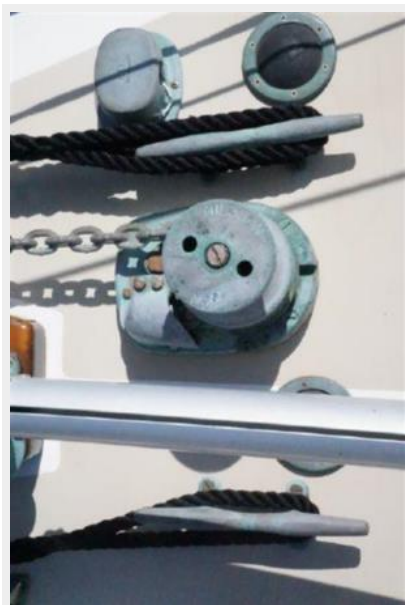
2



55



25



88



86



47



89



111



78



30



80



33



5



28



54



38



11



84



83



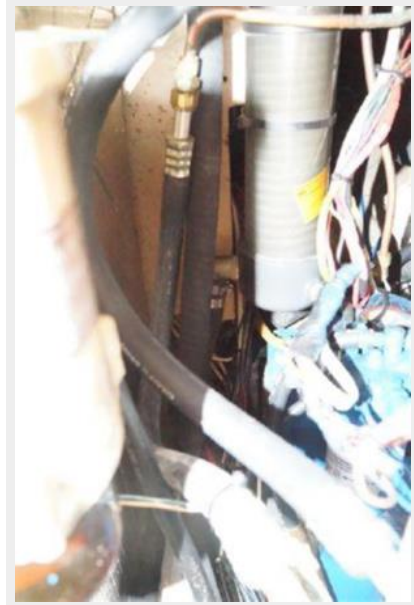
79



85



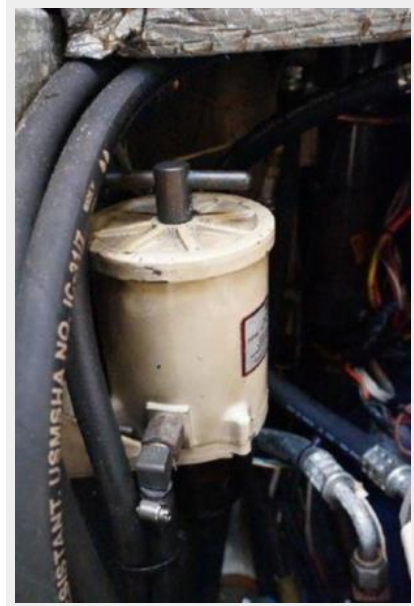
99



27



101



20



60



73



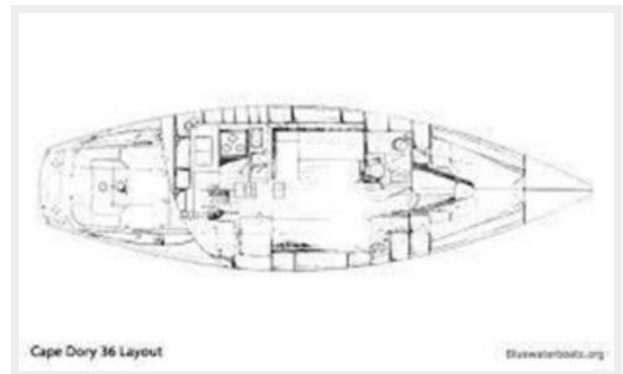
90



72



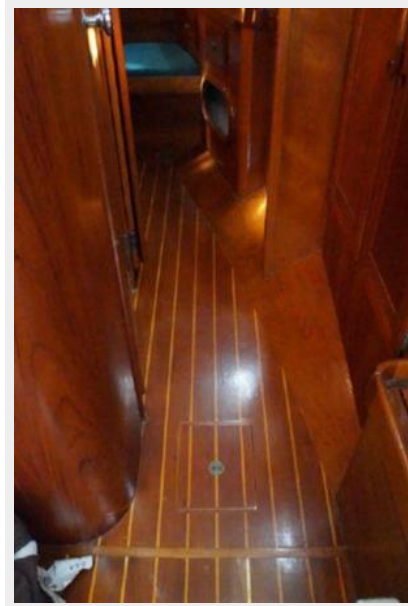
148



91



92



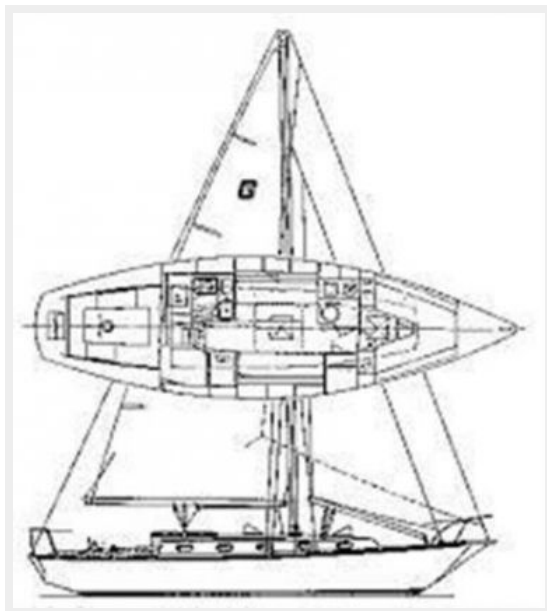
128



149



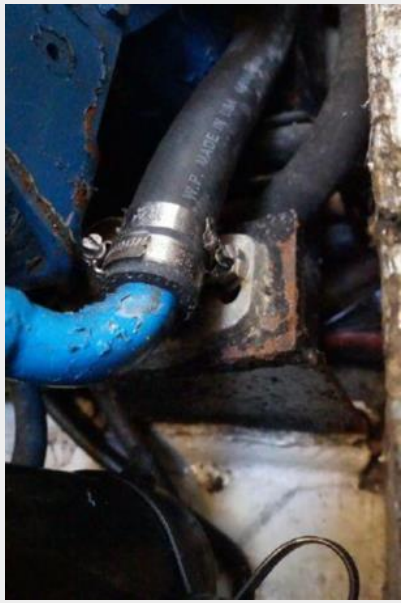
147



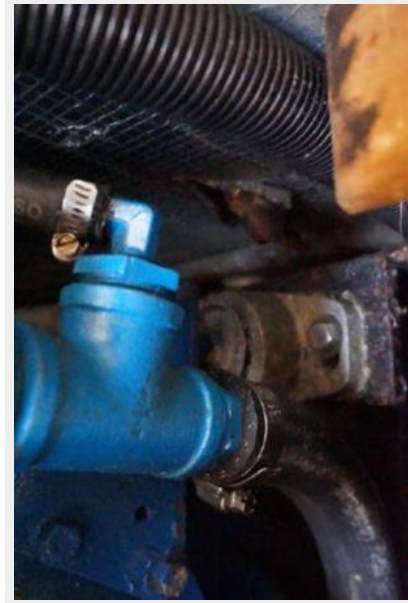
82



105



106



74



102



93



100



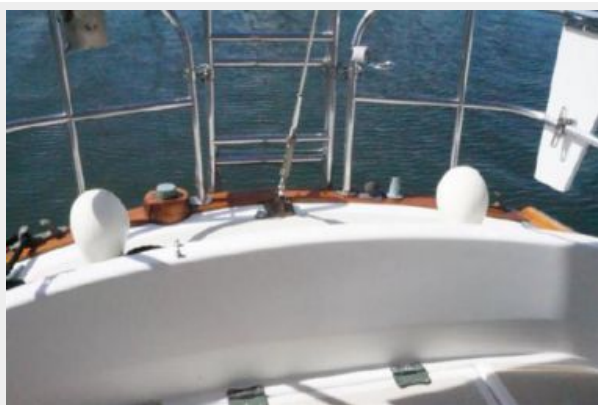
112



3



37



16



26



87



104



116



9



39



49



59



36



98



81



18



8



35



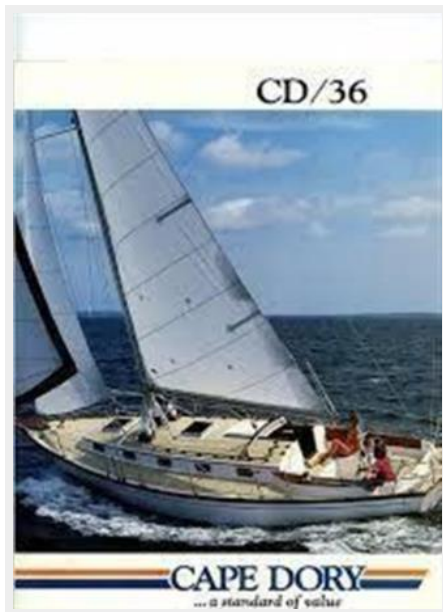
76



52



146



34



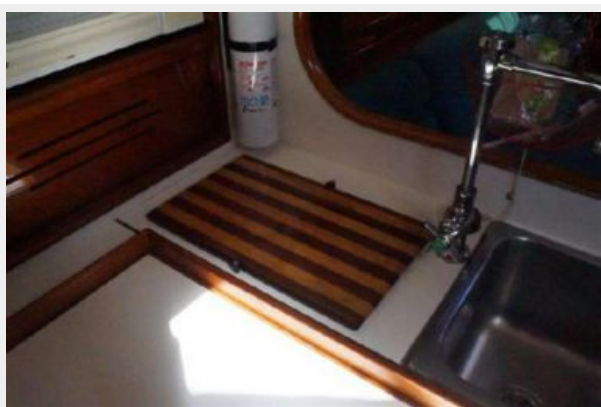
48



17



113



46



4



7



61



43



109



114



31



13



51



124



22



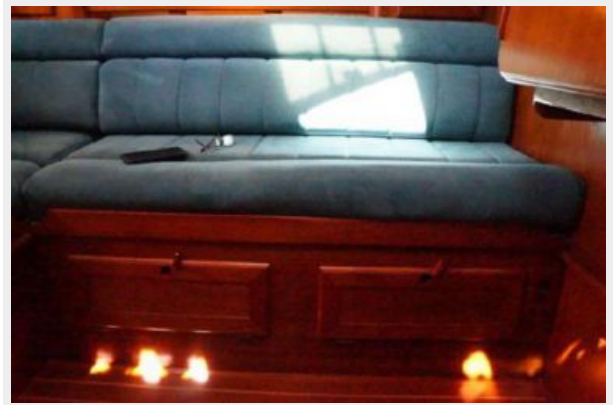
44



6



94



77



45



50



32



53



42



40



57



70



103



63



108



115



10



125



119



126



110



129



64



122



127



69



75



123



62



58



14



19



56



12



118



96



23



29



95



15



120



107



21



68



97



65



71



66



24



121



41



67



117



133



132



134



135



136



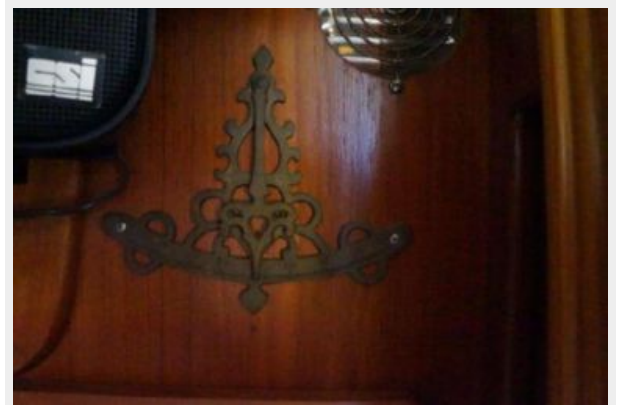
138



137



131



139



143



140



141



130



142



145



144



CONTACTS

Andrey Shestakov, leading yacht broker of the sales department of Shestakov Yacht Sales Inc. Shestakov Yacht Sales Inc., the official representative of the Miami/Fort Lauderdale FL headquarters.

Contact details

Email: **andrey@shestakovyachtsales.com**

Web: shestakovyachtsales.com/en/

Telephones

USA: +1(954)274-4435

Office hours

Monday – Saturday: **9:00 - 21:00** EDT

Sunday: **closed**

Address



Harbour Towne Marina, 850 NE 3rd St,
STE 213, Dania, FL 33004