

CATAMOUNT II — CUSTOM



Builder: CUSTOM

Year Built: 2007

Model: Racing Sailboat

Price: PRICE ON APPLICATION

Location: United States

LOA: 33' 0" (10.06m)

Beam: 9' 2" (2.79m)

Max Draft: 7' 7" (2.31m)

Our experienced yacht broker, Andrey Shestakov, will help you choose and buy a yacht that best suits your needs **Catamount II — CUSTOM** from our catalogue. Presently, at Shestakov Yacht Sales Inc., we have a wide variety of yachts available on our sale's list. We also work in close contact with all the big yacht manufacturers from all over the world.

If you would like to buy a yacht **Catamount II — CUSTOM** or would like help answering any questions concerning purchasing, selling or chartering a yacht, please call **+1(954)274-4435**

TABLE OF CONTENTS

TABLE OF CONTENTS	2
SPECIFICATIONS	6
Overview	6
Basic Information	6
Dimensions	6
Speed, Capacities and Weight	6
Accommodations	7
Hull and Deck Information	7
Engine Information	7
DETAILED INFORMATION	8
Overview	8
Exclusions	9
Disclaimer	9
PHOTOS	10
45	10
46	10
55	10
19	10
11	11
31	11
58	11
52	11
54	12
4	12
68	12
16	12
51	12
81	12

77	13
53	13
56	13
57	13
59	14
62	14
44	14
50	14
35	15
74	15
49	15
73	15
41	16
17	16
75	16
18	16
47	16
12	16
72	17
14	17
71	17
8	17
34	18
15	18
63	18
60	18
2	19
3	19
29	19

9	19
37	20
89	20
40	20
27	20
65	20
82	20
36	21
26	21
20	21
6	21
66	21
23	21
84	22
33	22
42	22
30	22
88	23
48	23
78	23
13	23
67	24
61	24
32	24
5	24
22	24
10	24
38	25
21	25

39	25
7	25
43	25
76	25
70	26
24	26
28	26
80	26
25	26
69	26
64	27
86	27
79	27
83	27
87	27
85	27
CONTACTS	28
Contact details	28
Telephones	28
Office hours	28
Address	28

SPECIFICATIONS

Overview

The Flying Tiger 10 M is a keelboat designed in 2005 by naval architect Robert H. Perry. Built by Bill Stevens at Hansheng Yachts in Xiamen China, and marketed by Hiptrader LLC, the FT10 is intended as an affordable one-design club racer. With its light displacement (4900 lbs), open transom, and bowsprit that supports a large masthead asymmetrical spinnaker it can be classified as a sportsboat. In order to allow manufacture in China and global distribution, the boat was designed to fit inside a standard shipping container. The idea of building an affordable 30 foot sport boat emerged in 2002 as a heated discussion topic in the on-line forum Sailing Anarchy. A group of avid one-design racers contributed to the definition of the requirements of a low cost 30 foot sport boat. The group guided Perry through the design of the Anarchy 30 concept boat. Starting from the Anarchy 30 Perry designed the Flying Tiger 10 M during the most part of 2005 in an open forum under the scrutiny and the input of the forum members, in a process that is probably unique in the history of American yacht building.

Basic Information

Category: Racing Sailboat

Model Year: 2007

Year Built: 2007

Country: United States

Dimensions

LOA: 33' 0" (10.06m)

LWL: 30' 3" (9.22m)

Beam: 9' 2" (2.79m)

Max Draft: 7' 7" (2.31m)

Clearance: 50' 0" (15.24m)

Speed, Capacities and Weight

Displacement: 4900 Pounds

Fuel Capacity: 6 Gallons

Accommodations

Total Cabins: 1

Total Heads: 1

Hull and Deck Information

Hull Material: Fiberglass

Engine Information

Engines: 1

Manufacturer: Tohatsu

Model: 9.8

Engine Type: Outboard

Fuel Type: Gas

DETAILED INFORMATION

Overview

Manufacturer Provided Description The Flying Tiger 10 meter was designed to fill a void in one-designed sport boats, namely affordability. In keeping with the cost factor, we were able to construct a boat utilizing technology where we felt it was needed most without incurring excessive cost.

- INTERIOR
- Large V-Berth In Bow Section
 - Oval Opening Hatch Above V-Berth
 - Salon w/2 Settee Berths, Chart Table/Sink And Galley Pump
 - 12Vdc Main Electrical Panel w/Breakers And Voltmeter.
 - Quarter Berths Aft Under Cockpit (2)
 - Interior Lighting
 - Storage Compartments Under All Berths

ENGINE

- Adjustable Bracket For Lowering/Raising Outboard Motor
- Compartment For 25 Lt. Fuel Tank
- Compartment Vented With Electrical Blower
- Engine Controls Recess Built Into Cockpit Starboard Side.
- Bridge Deck Hinged Hatch Closure
- TOHATSU 9.8hp Four Stroke - Electric start

DECK and HARDWARE

- Vacuum bagged fiberglass sandwich core construction.
- Carbon Fiber Mast
- Carbon Fiber Boom
- All interior bulkheads and furniture molded and cored fiberglass construction.
- Primary Winches #40 Harken, Aluminum Drum
- Secondary Winches #16 Harken, Aluminum Drum
- Spinlock Rope Clutches (5)
- 8 Inch Marelou Cleats (4)
- Harken Adjustable Jib Leads
- Harken Mainsheet Traveler w/Controls And Fine Adjuster
- Plastimo Manual Bilge Pump Mounted In cockpit
- Stainless Steel Bow Pulpit w/LED Navigational Lights
- Stainless Steel Stern Pulpit w/LED Navigational Light
- Stainless Steel Stanchions And Lifelines
- Stainless Steel Handrails On Cabintop (2)
- Stainless Steel Tiller w/Carbon Fiber Extension
- Harken Winch Handles (2)

MAST and RIGGING

- Mast, Boom And Prodder Carbon Fiber
- 2 Sets Tapered Sweptback Spreaders.
- Aluminum Foil Sections
- 1X19 Stainless Steel Wire Rigging, Continuous.
- Adjustable Backstay
- Facnor Jib Roller Furler
- Main, Jib And Spinnaker Halyards.
- Main, Jib And Spinnaker Sheets
- Main Outhaul, Cunningham and Boom Vang
- Keel Hoist
- BETTS aftermarket rudder

SAILSMAIN SAILS:

- Ullman Racing Main - 2017
- Kevlar Main - Neil Pryde
- Dacron Main - Neil Pryde

JIBS:

- Brand New "in the box" by North - 2018 NEVER USED
- Kevlar by Neil Pryde - furling
- Dacron by Neil Pryde - well used

SPINNAKERS:

- Old Neil Pryde
- Ullman - Regatta Only - good condition
- Neil Pryde Code Zero - used in one regatta - 2018

SAIL AREA: I : 39.25 ft J : 12.08 ft P : 40.00 ft E : 14.58 ft

Exclusions

Owner's personal belongings.

Disclaimer

The Company offers the details of this vessel or yacht in good faith but cannot guarantee or warrant the accuracy of this information nor warrant the condition of the vessel. A buyer should instruct his representatives, agents, or his surveyors, to investigate such details as the buyer desires validated. This vessel or yacht is offered subject to prior sale, price change, or withdrawal without notice.

PHOTOS

45



46



55



19



11



31



58



52



4



54



68



16



81



51



77



53



56



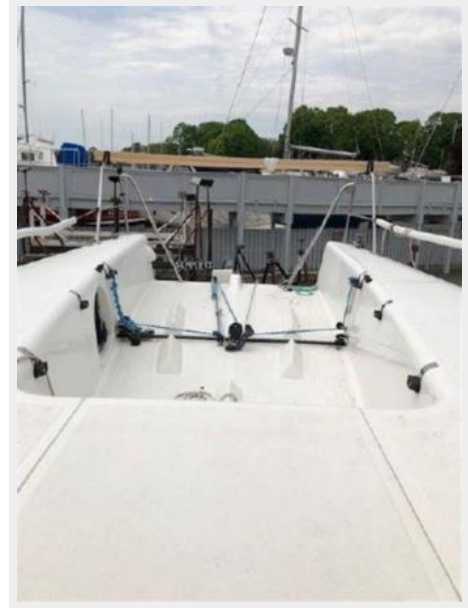
57



59



62



44



50



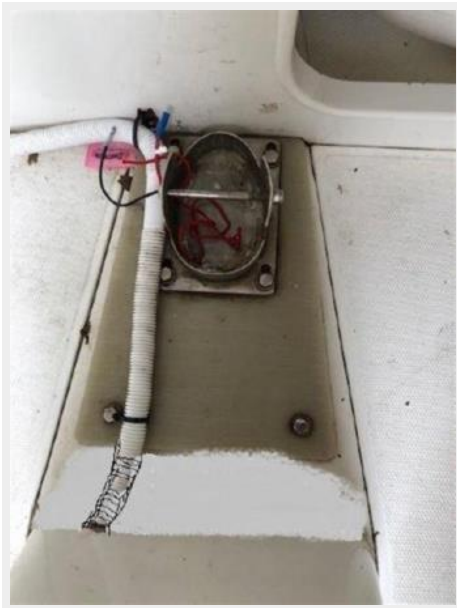
35



74



49



73



17



41



18



75



47



12



72



14



8



71



15



34



60



63



2



3



29



9



37



89



40



27



65



82



36



26



6



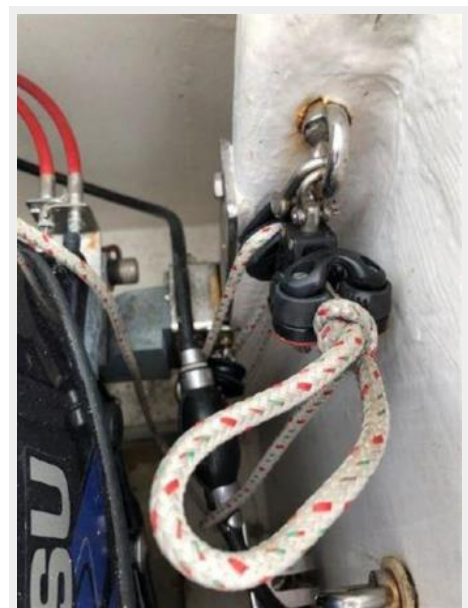
20



23



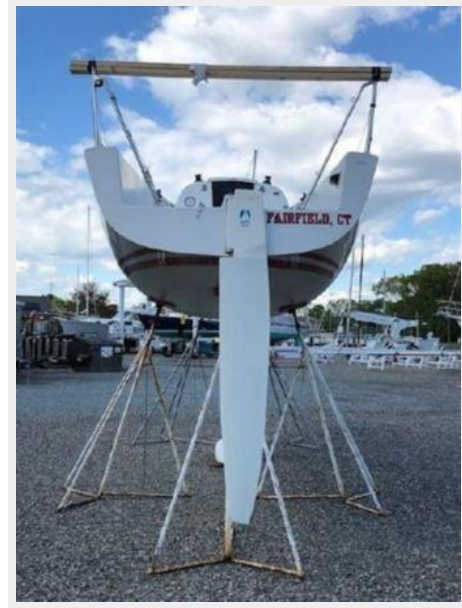
66



84



33



42



30



48



88



78



13



61



67



32



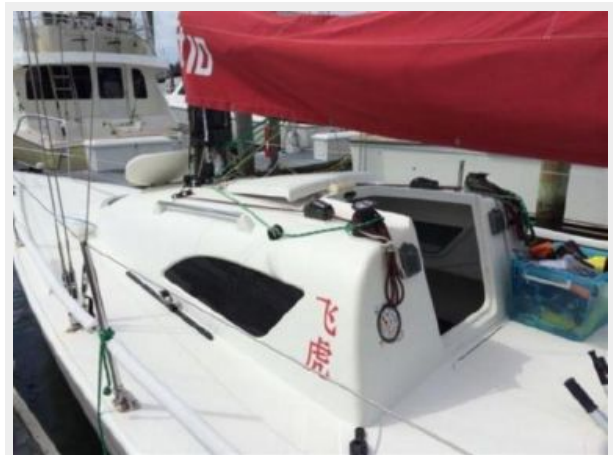
5



10



22



38



21



39



7



43



76



70



24



28



80



25



69



64



86



79



83



87



85



CONTACTS

Andrey Shestakov, leading yacht broker of the sales department of Shestakov Yacht Sales Inc. Shestakov Yacht Sales Inc., the official representative of the Miami/Fort Lauderdale FL headquarters.

Contact details

Email: andrey@shestakovyachtsales.com

Web: shestakovyachtsales.com/en/

Telephones

USA: +1(954)274-4435

Office hours

Monday – Saturday: **9:00 - 21:00** EDT

Sunday: **closed**

Address



Harbour Towne Marina, 850 NE 3rd St,
STE 213, Dania, FL 33004