

WIND WARD — CATALINA



Builder: CATALINA

Year Built: 1988

Model: Sloop

Price: PRICE ON APPLICATION

Location: United States

LOA: 34' 0" (10.36m)

Beam: 11' 9" (3.58m)

Max Draft: 4' 3" (1.30m)

Our experienced yacht broker, Andrey Shestakov, will help you choose and buy a yacht that best suits your needs **WIND WARD — CATALINA** from our catalogue. Presently, at Shestakov Yacht Sales Inc., we have a wide variety of yachts available on our sale's list. We also work in close contact with all the big yacht manufacturers from all over the world.

If you would like to buy a yacht **WIND WARD — CATALINA** or would like help answering any questions concerning purchasing, selling or chartering a yacht, please call **+1(954)274-4435**

TABLE OF CONTENTS

TABLE OF CONTENTS	2
SPECIFICATIONS	3
Overview	3
Basic Information	3
Dimensions	3
Speed, Capacities and Weight	3
Accommodations	3
Hull and Deck Information	4
Engine Information	4
PHOTOS	5
6997884_20190225074546928_1_XLARGE	5
6997884_20190225074557602_1_XLARGE	5
6997884_20190225074608195_1_XLARGE	5
6997884_20190225074539150_1_XLARGE	5
6997884_20190225074734669_1_XLARGE	5
6997884_20190225074729384_1_XLARGE	5
6997884_20190225074635415_1_XLARGE	6
6997884_20190225074643167_1_XLARGE	6
6997884_20190225074806468_1_XLARGE	6
6997884_20190225074748629_1_XLARGE	6
6997884_20190225074655693_1_XLARGE	6
CONTACTS	7
Contact details	7
Telephones	7
Office hours	7
Address	7

SPECIFICATIONS

Overview

WIND WARD is a fine example of the Catalina shoal draft sloop and has had many upgrades over the years by her experienced owners. The shoal draft keel is very friendly for offshore as well as island cruising and has all the equipment to make the trip not only safe, but enjoyable. It's ready to go cruising. A great boat you do not want to miss. Make an appointment to see her today.

Basic Information

Category: Sloop

Model Year: 1988

Year Built: 1988

Country: United States

Dimensions

LOA: 34' 0" (10.36m)

LWL: 29' 10" (9.09m)

Beam: 11' 9" (3.58m)

Max Draft: 4' 3" (1.30m)

Clearance: 51' 0" (15.54m)

Speed, Capacities and Weight

Displacement: 11950 Pounds

Water Capacity: 77 Gallons

Holding Tank: 18 Gallons

Fuel Capacity: 25 Gallons

Accommodations

Total Cabins: 2

Hull and Deck Information

Hull Material: Fiberglass

Engine Information

Engines: 1

Manufacturer: Universal

Model: MX25

Engine Type: Inboard

Fuel Type: Diesel

PHOTOS

6997884_20190225074546928_1_XLARGE



6997884_20190225074557602_1_XLARGE



6997884_20190225074539150_1_XLARGE



6997884_20190225074608195_1_XLARGE



6997884_20190225074734669_1_XLARGE



6997884_20190225074729384_1_XLARGE



6997884_20190225074635415_1_XLARGE

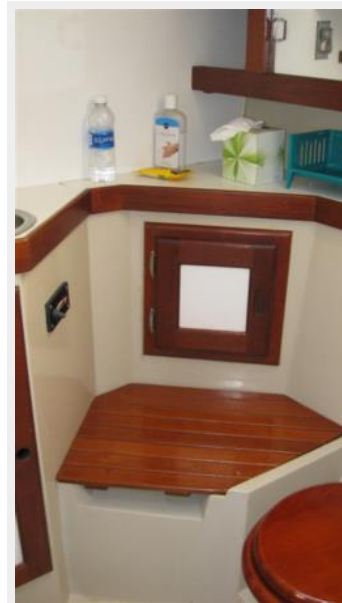


6997884_20190225074643167_1_XLARGE

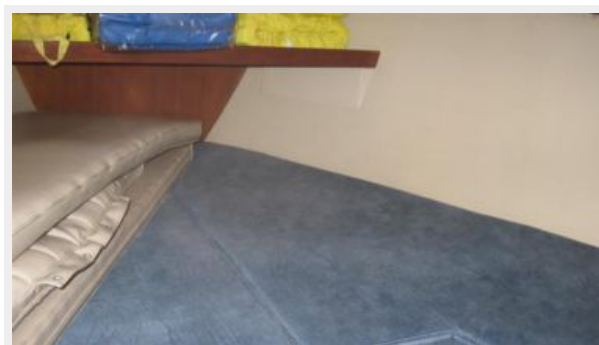


6997884_20190225074806468_1_XLARGE

6997884_20190225074748629_1_XLARGE



6997884_20190225074655693_1_XLARGE



CONTACTS

Andrey Shestakov, leading yacht broker of the sales department of Shestakov Yacht Sales Inc. Shestakov Yacht Sales Inc., the official representative of the Miami/Fort Lauderdale FL headquarters.

Contact details

Email: andrey@shestakovyachtsales.com

Web: shestakovyachtsales.com/en/

Telephones

USA: +1(954)274-4435

Office hours

Monday – Saturday: **9:00 - 21:00** EDT

Sunday: **closed**

Address



Harbour Towne Marina, 850 NE 3rd St,
STE 213, Dania, FL 33004