

## SUMMER PLACE — CARVER



**Судостроитель:** CARVER

**Год постройки:** 2000

**Модель:** Моторная яхта

**Цена:** **ЦЕНА ЯХТЫ ПО ЗАПРОСУ**

**Местонахождение:** United States

**Длина общая:** 40' 0" (12.19m)

**Ширина:** 13' 10" (4.22m)

**Макс. осадка:** 3' 3" (0.99m)

Купить **Summer Place — CARVER** а также выбрать подходящую вам яхту из нашего каталога яхт вам поможет опытный яхтенный брокер Андрей Шестаков. На сегодняшний день компания **Shestakov Yacht Sales Inc.** имеет большое количество яхт в собственном списке продаж, а также тесно сотрудничает со всеми крупными яхтенными производителями по всему миру.

Для того чтобы купить яхту **Summer Place — CARVER** а также проконсультироваться по любому вопросу связанному с покупкой, продажей, чартером яхт позвоните по телефону **+7(918)465-66-44**.

# ОГЛАВЛЕНИЕ

ОГЛАВЛЕНИЕ	2
ХАРАКТЕРИСТИКИ	6
Обзор	6
Основная информация	6
Размеры	6
Скорость, вместимость и масса	6
Размещение	7
Корпус и палуба	7
Информация о двигателе	7
ПОДРОБНОЕ ОПИСАНИЕ	8
MAIN DESCRIPTION	8
MANUFACTURER'S DESCRIPTION	8
CONSTRUCTION	8
Mechanical	9
ELECTRICAL	9
WATER & WASTE SYSTEMS	9
SAFETY & NAVIGATION	10
BRIDGE AND EXTERIOR AMENITIES	11
Aft Deck	11
CABIN AMENITIES	11
Electronics	12
MISC AND EXTRA PARTS	12
DISCLAIMER	13
Исключения	13
Отказ от ответственности	13
ФОТОГРАФИИ	15
14 Summer Place 2000 Carver 406 aft deck wet bar	15
2 Summer Place 2000 Carver 406 Starboard View	15

11.2 Summer Place 2000 Carver 406 Forward View	15
1 Summer Place 2000 Carver 406 Forward View	15
28 Summer Place 2000 Carver 406 Aft Hardtop	16
19 Summer Place 2000 Carver 406 Helm 1	16
38 Summer Place 2000 Carver 406 Galley 3	16
36 Summer Place 2000 Carver 406 Dinette 3	16
43 Summer Place 2000 Carver 406 Aft Cabin companionway	17
20 Summer Place 2000 Carver 406 Helm 6	17
40 Summer Place 2000 Carver 406 Forward Cabin 1	17
41 Summer Place 2000 Carver 406 Forward Cabin 3	17
42 Summer Place 2000 Carver 406 Forward Head	18
4 Summer Place 2000 Carver 406 Starboard Aft View	18
46 Summer Place 2000 Carver 406 Aft Cabin 1	18
48 Summer Place 2000 Carver 406 Aft Cabin 3	18
13 Summer Place 2000 Carver 406 aft deck 5	19
49 Summer Place 2000 Carver 406 Aft Head 1	19
51 Summer Place 2000 Carver 406 Aft Cabin 3	19
53 Summer Place 2000 Carver 406 Engine room 2	19
21 Summer Place 2000 Carver 406 Helm 2	20
40.1 Summer Place 2000 Carver 406 Forward Cabin 2	20
27 Summer Place 2000 Carver 406 Helm Pay	20
25 Summer Place 2000 Carver 406 Helm 7	20
23 Summer Place 2000 Carver 406 Helm 5	21
48.1 Summer Place 2000 Carver 406 Aft Cabin 4	21
12 Summer Place 2000 Carver 406 aft deck 1	21
32 Summer Place 2000 Carver 406 Salon 1	21
7 Summer Place 2000 Carver 406 Transom Shower	22
17 Summer Place 2000 Carver 406 Flybridge 1	22
3.1 Summer Place 2000 Carver 406 Aft View 1	22

---

22 Summer Place 2000 Carver 406 helm 3	22
44 Summer Place 2000 Carver 406 Aft cabin 5	23
24 Summer Place 2000 Carver 406 helm 6	23
55 Summer Place 2000 Carver 406 Engine Room 4	23
5 Summer Place 2000 Carver 406 Port Aft View	23
9 Summer Place 2000 Carver 406 Port Catwalk	24
47 Summer Place 2000 Carver 406 Aft Cabin 2	24
54 Summer Place 2000 Carver 406 Engine room 3	24
15 Summer Place 2000 Carver 406 Aft Deck 2	24
29 Summer Place 2000 Carver 406 Interior overview	25
16 Summer Place 2000 Carver 406 aft deck 4	25
6 Summer Place 2000 Carver 406 Swim Platform	25
45 Summer Place 2000 Carver 406 aft cabin 6	25
50 Summer Place 2000 Carver 406 Aft Head 2	26
37 Summer Place 2000 Carver 406 Galley 2	26
62 Summer Place 2000 Carver 406 electrical panel 1	26
57 Summer Place 2000 Carver 406 engine room 5	26
56 Summer Place 2000 Carver 406 Engine room 4	27
63 Summer Place 2000 Carver 406 Dinghy	27
64.1 Summer Place 2000 Carver 406 Aft View 2	27
33 Summer Place 2000 Carver 406 Salon Seating	27
52 Summer Place 2000 Carver 406 aft companionway 2	28
11.1 Summer Place 2000 Carver 406 Forward Deck 2	28
26 Summer Place 2000 Carver 406 Helm 8	28
39 Summer Place 2000 Carver 406 Galley	28
60 Summer Place 2000 Carver 406 Starboard Hour meter	29
30 Summer Place 2000 Carver 406 Interior Overview 3	29
59 Summer Place 2000 Carver 406 Port Hour Meter	29
61 Summer Place 2000 Carver 406 Generator hours	29

---

---

11 Summer Place 2000 Carver 406 Spotlight	30
34 Summer Place 2000 Carver 406 Galley and Dinette	30
3 Summer Place 2000 Carver 406 Aft View 1	30
18 Summer Place 2000 Carver 406 Flybridge 2	30
61.1 Summer Place 2000 Carver 406 engine room 1	31
19.1 Summer Place 2000 Carver 406 Helm 7	31
64 Summer Place 2000 Carver 406 dinghy motor	31
65 Summer Place 2000 Carver 406	31
10 Summer Place 2000 Carver 406 Starboard Catwalk	32
58 Summer Place 2000 Carver 406 Engine Room 6	32
35 Summer Place 2000 Carver 406 Dinette 2JPG	32
31 Summer Place 2000 Carver 406 Interior overview 2	32
8 Summer Place 2000 Carver 406 molded fiberglass stairs	33
<b>КОНТАКТЫ</b>	<b>34</b>
Контактная информация	34
Телефоны	34
Время работы	34
Адрес	34

# ХАРАКТЕРИСТИКИ

## Обзор

FRESH WATER ONLY and kept undercover on the Tennessee and Cumberland River. This beauty is ready for new owners. She is spacious and well cared for with enough room to entertain. Headroom 6'2".What makes this boat special?

- Twin Diesel Cummins with ZF transmissions (rated 4000hrs per year-commercial grade reliability)
- Fire Suppression System in the engine room
- Dual fuel filters with bypass (in case you get bad fuel along the route)
- Two Owner boat
- Hardbottom dinghy with outboard
- All filters and impellers have been changed 3x this past year to ensure reliability of internal fluids and cavities
- Bottom surveyed this year with great findings
- Freshwater it's entire life (Huntsville for 18 yrs then Nashville for the rest)

## Основная информация

Тип судна: Моторная яхта

Модельный год: 2000

Год постройки: 2000

Страна: United States

## Размеры

Длина общая: 40' 0" (12.19m)

Ширина: 13' 10" (4.22m)

Макс. осадка: 3' 3" (0.99m)

Трапы: 17' 2" (5.23m)

## Скорость, вместимость и масса

Водоизмещение: 27900 Pounds

Вместимость воды: 70 Gallons

Вместимость сточного бака: 64 Gallons

Объем топливного бака: 342 Gallons

## Размещение

---

**Всего кают:** 2

**Всего коек:** 2

**Всего ком. состава:** 2

## Корпус и палуба

---

**Материал корпуса:** Fiberglass

## Информация о двигателе

---

**Двигатели:** 2

**Производитель:** Cummins

**Модель:** Diamond Series 6BTA5.9-M3

**Тип двигателя:** Inboard

**Тип топлива:** Diesel

---

# ПОДРОБНОЕ ОПИСАНИЕ

---

## MAIN DESCRIPTION

---

FRESH WATER ONLY and kept undercover on the Tennessee and Cumberland River. This beauty is ready for new owners. She is spacious and well cared for with enough room to entertain. Headroom 6'2".What makes this boat special?

- Twin Diesel Cummins with ZF transmissions (rated 4000hrs per year-commercial grade reliability)
- Fire Suppression System in the engine room
- Dual fuel filters with bypass (in case you get bad fuel along the route)
- Two Owner boat
- Hardbottom dinghy with outboard
- All filters and impellers have been changed 3x this past year to ensure reliability of internal fluids and cavities
- Bottom surveyed this year with great findings
- Freshwater it's entire life (Huntsville for 18 yrs then Nashville for the rest)

## MANUFACTURER'S DESCRIPTION

---

With more than 100 square feet of aft deck space, and the available aft deck wet bar and icemaker, the Carver 406 Motor Yacht is well-optioned for fun in the sun. Whether fully equipped with the enclosures or with the optional aft deck hardtop and arch, owners will notice there's plenty of room to roam topside. As roomy below as it is above the 406's salon includes an L-shaped Flexsteel sofa with double incliners and a loveseat. There's an adjacent entertainment center with a TV and a VCR, and even an optional home rack stereo system with its receiver, dual cassette , and CD player. Aft, the 406 features a magnificent stateroom that includes an oversized queen berth, inner-spring mattress, abundant storage space, a large hanging locker and plenty of walk-around room. Add the convertible dinette, salon sofa bed, and a comfortable forward stateroom, and the 406 can easily accommodate a party of seven.

## CONSTRUCTION

---

- Structural engine mountings - reinforced stringer mountings with gusseted, angle steel plates
- Fabricated aluminum floor frames with stainless steel stanchions
- Hand-laid, molded fiberglass components featuring composite laminate hullsides, decks, and cabin steps.
- Molded fiberglass stringer system
- Maple bulkheads, cabinetry, and trim throughout cabin with high gloss finish
- Solid fiberglass hull bottom with Kynte substrates and Vinylester barrier coat



- Tinted, tempered safety glass frameless window systems
- Unitized deck and cabin top construction with integral aluminum truss reinforcement in cabin top structure
- Molded nonskid surfaces on all walk decks

---

## Mechanical

---

- "Extreme Marine" engine room heater 600 watt
- Raycor 75/900 double max diesel/water separator filters, each with it's own vacuum
- Dripless shaft logs
- Exhaust muffler - engines
- Fuel Tanks - welded, baffled 5052 aluminum 3 ea.
- Hydraulic steering
- Propellers + 1 spare set
- Shafts - Aquamet
- Rudders - 421 manganese bronze
- Cutlass Bearings - synthetic rubber composite (starboard new 200 hrs ago)
- Struts- 421 manganese bronze
- Trim Tabs- stainless steel, hydraulic

---

## ELECTRICAL

---

- AC/DC distribution panels with magnetic circuit breakers and integral bilge blower controls; AC voltmeter
- Batteries - Five (5) deep cycle, marine 12v battery
- Charger - electronic, AC/DC converter external
- Connectors - CATV, telephone
- GFCI protection - all 110v outlets
- 1 Shore power connector - 125/250v
- Shore power cord 50ft and 25ft (2 each)
- Wiring system - tinned copper strand wire, harnessed, color-coded, labeled, meets or exceeds ABYC standards
- Kohler 10.0kW - diesel
- 50' - 50amp shore cord (2 each)
- 25' - 50amp shore cord (2 each)
- One 125/250 splitter
- (2) 50amp to 30amp adaptor cords
- (1) 50amp to 15amp adaptor cord

---

## WATER & WASTE SYSTEMS

---

- Fresh Water System - Pressurized (12v) 40 psi; 4 gpm
- Fresh Water Storage Tank - Polyethylene, 70 gallons
- Shore water connection with pressure-reduction valve (40 psi)
- Shower sump pumps (2) - automatic/manual operation
- Water and waste lines - constructed of molecularly cross-linked polyethylene
- Waste holding tanks (2) - with dockside pumpouts, 36 gallons forward, 28 gallons aft
- Water heater - 11 gallons (110v)
- Overboard discharge with pump with "Y" valve
- Fresh water tank level monitor
- Hot and cold transom handshower
- Waste tank level monitor for each head (2)
- Fresh water bow and stern wash down
- Vacuum flush (2)

## SAFETY & NAVIGATION

---

- Anodes - Zinc, sacrificial
- Battery selector switch
- Battery restraint brackets
- Bilge blowers (12v) - 4 each
- Bilge pumps (3) 1500 gph each, automatic/manual operation
- Brass valves for all underwater thru-hulls
- CO detectors in salon and staterooms (3)
- Compass illuminated
- Engine alarms - temperature and oil pressure
- Fire suppression system - automatic, FE241
- Galvanic isolator/zinc saver
- Horn - air (12v), trumpet
- Internal bonding system
- Navigation Lights
- Life Ring 36" and throw out lines
- Life Jackets (7)
- Fire blanket
- Single station spotlight with remote
- Rudder angle indicator
- Portable fire extinguishers - 6 each
- Maxwell Freedom 800 windlass with 35lb anchor and 150 ft of 5/16" chain
- Fender racks - 4" each
- St. Croix davits 400 model number. Rotating arms with special lifting arm at bow. Installed by St. Croix Company personnel.
- Achilles "rib" dinghy HB315DX 10' with fiberglass bottom and storage compartment at bow. (Hypolon...not P.V.C.) with 10hp Mercury outboard (20mph speed).

---

## BRIDGE AND EXTERIOR AMENITIES

---

- Command Bridge
- Access doors - 9 provide access to wiring in forward bridge
- Beverage Holders (2) - integral, self-draining
- Light - courtesy, recessed (8 each)
- Lounge - forward, with storage below, accommodates 4 adults
- Padded outboard bulkheads
- Seat Covers
- Storage at bridge eyebrow
- Self-draining walk surface
- Windshield - Venturi Style, wraparound aluminum frame
- 12v plug
- Companion Lounge - storage below, accommodates 2 adults
- Helm Cover
- Helm Seat - adjustable, high quality marine-grade upholstery, embroidery stitching
- Light - courtesy recessed, 5 each
- Seat covers
- Instrumentation
- Gauge - synchronizer engine starboard and port
- Gauges (1 set per engine) - oil pressure, engine temperature, engine battery voltage, fuel level, engine hours, tachometers
- Rotary switch controls
- Stereo - AM/FM receiver with remote CD player, 1000 watt subwoofer and amp with 5 speakers
- Transom storage locker (required with propane stove)
- Wet bar with ice maker
- Sirius radio setup equipment
- "Prestige" full black Sunbrella canvas with carpet

---

## Aft Deck

---

- 110v Outlet - GFCI protected
- 90 sq ft (approx.), integral to deck
- Command bridge stairways (2) - integral to deck
- Cleats - 8" each
- Electronics arch - custom aluminum with acrylic polyurethane

---

## CABIN AMENITIES

---

- **SALON**
- Air Conditioning with reverse cycle heat, (2 units - 18,000 & 16,000 BTU's)

- Central Vacuum system
- Coordinated Ultra leather color
- Décor Package - 8 pc decorator pillow set, embroidered towels, sheets
- Designer mirror on dinette bulkhead
- Maple wood interior with high gloss finish
- 11 decorative pillows
- Sofa - L-shaped, Flexsteel, ultraleather with side by side recliners
- Pacific Sky color scheme
- Stereo - AM/FM receiver with single disc player with 6 speakers - all with rheostats
- New Sharp Microwave with 16" carousel
- New Norcold refrigerator and freezer
- 3-burner electric range
- Oven
- Dinette in galley transforms into a bed
- TV/DVD with remote control in master stateroom, salon, forward guest stateroom & bridge (4 total)
- All TVs have HD Bluera y DVD players (4 total)
- Intellian i2 satellite TV antenna system
- Dish network HDTV DVR satellite receiver unit: a) Boat under cover - use satellite Dish antenna (b) Boat in open water - use Intellian i2 satellite antenna in dock or underway

## Electronics

---

- Standard Horizon VHF Radio Explorer with remote speaker
- Standard Horizon hailer
- Furuno depth sounder FCV627
- Standard Horizon chart plotter CP390i with new 2015 charts from Great Lakes to Gulf of Mexico
- Chart Plotter has new "Smart GPS Antenna" not standard
- Raytheon autopilot - Raypilot 650
- Raytheon radar - R41xx "Raster" - Open array 48mile, monochrome (still one of the best)
- Remote Maxwell anchor windlass

## MISC AND EXTRA PARTS

---

- Dock Lines
- Binoculars
- Long lines
- Fans
- Signal kit

- Spare Anchor
- Hand held spotlights
- Man overboard locator lights
- Beede engine sychronizer #4765415
- Sherwood raw water pump with impeller
- Cummins diesel primer fuel pump
- Cummins diesel " cooling pump" #35866 and Part #3802970
- Engine anodes Paolillo #339350 1 - set of 6
- Racor filters 1 each R26sul Fuel
- Fleetguard filters 1-FF5285, 1-LF3349
- Shakespere cell phone antenna #4801
- Cummins engine radiator cap OEM
- White Rodgers coil12v, 120-105111-5 part #9933
- Cummins valve coer gaskets 6 each (new)
- Cummins flat engine belt #20-2685
- Propeller shaft nuts with splines CC1100255 - 2 sets
- Misc bulbs, fuses and circuit breakers
- Ice maker parts, vaccu-flush parts, and rubber hose and clap
- 1 set balance spare props 22/24
- A/C/ cooling pump - Wet End Kit AC-5c-MD
- Racor 220R fuel and water separator - 1 each
- March water pump for A/C new AC-5C-MD
- Water tank level sender V15500102 D by V.D.O. level
- Seaworthy marine amp - 400 amp
- Jabsco Heavy duty macerator pump 18590-2092
- 4 deck chairs - 3 with new sets and arms

## DISCLAIMER

---

The Company offers the details of this vessel in good faith but cannot guarantee or warrant the accuracy of this information nor warrant the condition of the vessel. A buyer should instruct his agents, or his surveyors, to investigate such details as the buyer desires validated. This vessel is offered subject to prior sale, price change, or withdrawal without notice.

## Исключения

---

При продаже яхты исключаются личные вещи владельца.

## Отказ от ответственности

---

Компания предоставляет описание судна или яхты добросовестно, но не может гарантировать точность этой информации, а также не ручается за техническое

состояние. Покупатель должен проинструктировать своих агентов или оценщиков исследовать представленную информацию более подробно, по собственному желанию. Продажа судна или яхты, изменение цены или снятие с продажи будет происходить без предварительного уведомления.

# ФОТОГРАФИИ

**2 Summer Place 2000 Carver 406 Starboard View**



**14 Summer Place 2000 Carver 406 aft deck wet bar**



**11.2 Summer Place 2000 Carver 406 Forward View**



**1 Summer Place 2000 Carver 406 Forward View**



**28 Summer Place 2000 Carver 406 Aft Hardtop**



**19 Summer Place 2000 Carver 406 Helm 1**



**36 Summer Place 2000 Carver 406 Dinette 3**



**38 Summer Place 2000 Carver 406 Galley 3**





20 Summer Place 2000 Carver 406 Helm 6



43 Summer Place 2000 Carver 406 Aft Cabin companionway



40 Summer Place 2000 Carver 406 Forward Cabin 1



41 Summer Place 2000 Carver 406 Forward Cabin 3



**42 Summer Place 2000 Carver 406 Forward Head**

**4 Summer Place 2000 Carver 406 Starboard Aft View**



**46 Summer Place 2000 Carver 406 Aft Cabin**  
**1**



**48 Summer Place 2000 Carver 406 Aft Cabin**  
**3**



13 Summer Place 2000 Carver 406 aft deck 5 49 Summer Place 2000 Carver 406 Aft Head

1



51 Summer Place 2000 Carver 406 Aft Cabin 53 Summer Place 2000 Carver 406 Engine room 2

3

room 2



### 40.1 Summer Place 2000 Carver 406 Forward Cabin 2



### 21 Summer Place 2000 Carver 406 Helm 2



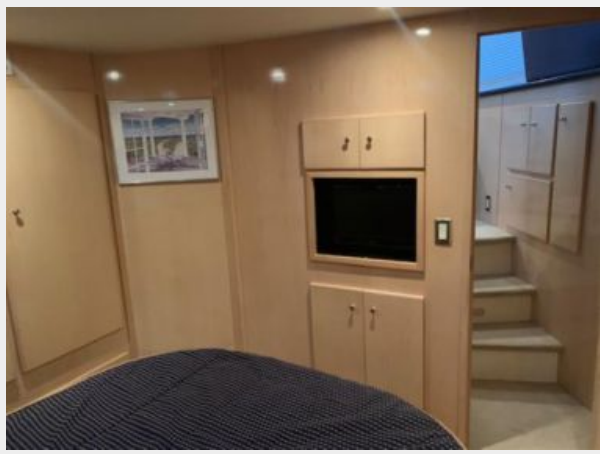
### 27 Summer Place 2000 Carver 406 Helm Pay



### 25 Summer Place 2000 Carver 406 Helm 7



### 48.1 Summer Place 2000 Carver 406 Aft Cabin 4



### 23 Summer Place 2000 Carver 406 Helm 5



### 12 Summer Place 2000 Carver 406 aft deck 1



### 32 Summer Place 2000 Carver 406 Salon 1



### 7 Summer Place 2000 Carver 406 Transom Shower



### 17 Summer Place 2000 Carver 406 Flybridge

1



### 3.1 Summer Place 2000 Carver 406 Aft View

1



### 22 Summer Place 2000 Carver 406 helm 3



44 Summer Place 2000 Carver 406 Aft cabin  
5



24 Summer Place 2000 Carver 406 helm 6



55 Summer Place 2000 Carver 406 Engine  
Room 4



5 Summer Place 2000 Carver 406 Port Aft  
View



**9 Summer Place 2000 Carver 406 Port  
Catwalk**



**47 Summer Place 2000 Carver 406 Aft Cabin  
2**



**54 Summer Place 2000 Carver 406 Engine  
room 3**



**15 Summer Place 2000 Carver 406 Aft Deck  
2**





**29 Summer Place 2000 Carver 406 Interior overview**



**16 Summer Place 2000 Carver 406 aft deck 4**



**45 Summer Place 2000 Carver 406 aft cabin 6**



**6 Summer Place 2000 Carver 406 Swim Platform**



50 Summer Place 2000 Carver 406 Aft Head  
2



37 Summer Place 2000 Carver 406 Galley 2



62 Summer Place 2000 Carver 406 electrical  
panel 1



57 Summer Place 2000 Carver 406 engine  
room 5



56 Summer Place 2000 Carver 406 Engine room 4



63 Summer Place 2000 Carver 406 Dinghy



64.1 Summer Place 2000 Carver 406 Aft View 2



33 Summer Place 2000 Carver 406 Salon Seating



**52 Summer Place 2000 Carver 406 aft companionway 2**



**11.1 Summer Place 2000 Carver 406 Forward Deck 2**



**26 Summer Place 2000 Carver 406 Helm 8**



**39 Summer Place 2000 Carver 406 Galley**



**60 Summer Place 2000 Carver 406  
Starboard Hour meter**



**30 Summer Place 2000 Carver 406 Interior  
Overview 3**



**59 Summer Place 2000 Carver 406 Port Hour  
Meter**



**61 Summer Place 2000 Carver 406  
Generator hours**



**34 Summer Place 2000 Carver 406 Galley and Dinette**



**11 Summer Place 2000 Carver 406 Spotlight**



**18 Summer Place 2000 Carver 406 Flybridge 2**



**3 Summer Place 2000 Carver 406 Aft View 1**



**61.1 Summer Place 2000 Carver 406 engine room 1**

**19.1 Summer Place 2000 Carver 406 Helm 7**



**64 Summer Place 2000 Carver 406 dinghy motor**



**65 Summer Place 2000 Carver 406**



**10 Summer Place 2000 Carver 406  
Starboard Catwalk**



**58 Summer Place 2000 Carver 406 Engine  
Room 6**



**35 Summer Place 2000 Carver 406 Dinette  
2JPG**



**31 Summer Place 2000 Carver 406 Interior  
overview 2**





## 8 Summer Place 2000 Carver 406 molded fiberglass stairs



# КОНТАКТЫ

---

Андрей Шестаков (Andrey Shestakov) – ведущий яхтенный брокер отдела продаж яхт и судов компании Shestakov Yacht Sales Inc. Официальный представитель Shestakov Yacht Sales Inc. для русскоговорящих клиентов в центральном офисе компании в Майами/Форт Лодердейл/Флорида/США.

## Контактная информация

---

Email: [andrey@shestakovyachtsales.com](mailto:andrey@shestakovyachtsales.com)

Web: [shestakovyachtsales.com](http://shestakovyachtsales.com)

## Телефоны

---

Краснодарский край: **+7(918)465-66-44**

США, Майами, Флорида: **+1(954)274-4435**

## Время работы

---

Понедельник – Суббота: **9:00 - 21:00**  
EDT

Воскресенье: **Закрето**

## Адрес

---



Harbour Towne Marina, 850 NE 3rd St,  
STE 213, Dania, FL 33004