

## SWIFT TRAWLER 47 — BENETEAU



**Builder:** BENETEAU

**Year Built:** 2019

**Model:** Trawler Yacht

**Price:** PRICE ON APPLICATION

**Location:** United States

**LOA:** 47' (14.33mm)

**Beam:** 14.5

**Max Draft:** 3' 10" (1.17mm)

**Cruise Speed:** 20.25 Knots Kts. (23 MPH)

**Max Speed:** 24 Knots Kts. (28 MPH)

Our experienced yacht broker, Andrey Shestakov, will help you choose and buy a yacht that best suits your needs **Swift Trawler 47 — BENETEAU** from our catalogue. Presently, at Shestakov Yacht Sales Inc., we have a wide variety of yachts available on our sale's list. We also work in close contact with all the big yacht manufacturers from all over the world.

If you would like to buy a yacht **Swift Trawler 47 — BENETEAU** or would like help answering any questions concerning purchasing, selling or chartering a yacht, please call **+1(954)274-4435**

# TABLE OF CONTENTS

---

TABLE OF CONTENTS	2
SPECIFICATIONS	4
Overview	4
Basic Information	4
Dimensions	4
Speed, Capacities and Weight	4
Accommodations	4
Hull and Deck Information	5
Engine Information	5
PHOTOS	6
2	6
3	6
4	6
5	6
6	6
7	6
9	7
8	7
11	7
10	7
12	8
13	8
14	8
15	8
16	8
17	8
18	9
CONTACTS	10

---

Contact details	10
Telephones	10
Office hours	10
Address	10

---

---

# SPECIFICATIONS

---

## Overview

---

The Swift Trawler 47 combines confidence with affordability. She is the ideal boat for travelling with the family. She is designed to take you further and faster. She is not only ingenious, elegant and incredibly safe, but continues the legacy of a range that is cut out for maritime adventure as much as for social life.

## Basic Information

---

**Category:** Trawler Yacht

**Model Year:** 2019

**Year Built:** 2019

**Country:** United States

## Dimensions

---

**LOA:** 47' (14.33mm)

**Beam:** 14.5

**Max Draft:** 3' 10" (1.17mm)

## Speed, Capacities and Weight

---

**Cruise Speed:** 20.25 Knots Kts. (23 MPH)

**Cruise Speed Range:** 2800

**Max Speed:** 24 Knots Kts. (28 MPH)

**Max Speed Range:** 3075 Kts.

**Water Capacity:** 169 Gallons

**Holding Tank:** 45 Gal Gallons

**Fuel Capacity:** 510 Gal Gallons

## Accommodations

---

**Total Cabins:** 3

**Total Heads:** 2

---

## Hull and Deck Information

---

**Hull Material:** Fiberglass

---

## Engine Information

---

**Engines:** 2

**Manufacturer:** Cummins

**Engine Type:** Inboard

**Fuel Type:** Diesel

# PHOTOS

2



3



4



5



6



7



8



9



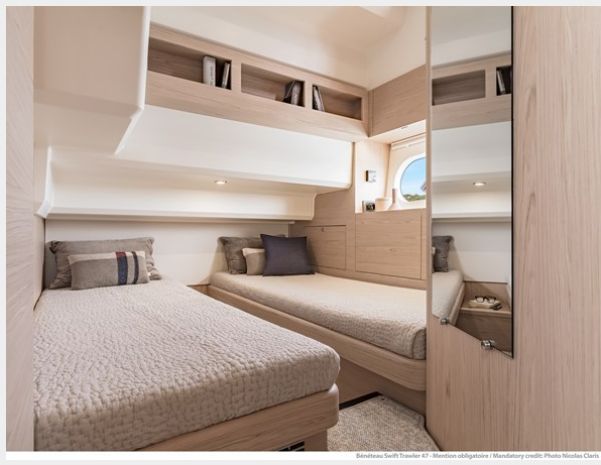
10



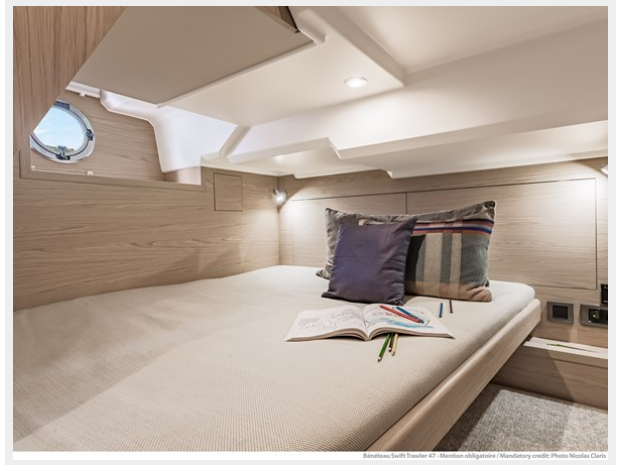
11



12



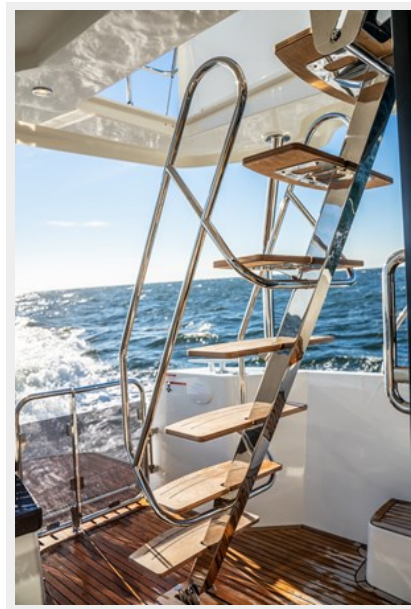
13



14



15



16



17





18



# CONTACTS

---

Andrey Shestakov, leading yacht broker of the sales department of Shestakov Yacht Sales Inc. Shestakov Yacht Sales Inc., the official representative of the Miami/Fort Lauderdale FL headquarters.

## Contact details

---

Email: [andrey@shestakovyachtsales.com](mailto:andrey@shestakovyachtsales.com)

Web: [shestakovyachtsales.com/en/](http://shestakovyachtsales.com/en/)

## Telephones

---

USA: +1(954)274-4435

## Office hours

---

Monday – Saturday: **9:00 - 21:00** EDT

Sunday: **closed**

## Address

---



Harbour Towne Marina, 850 NE 3rd St,  
STE 213, Dania, FL 33004