

## PELEU K — OVERMARINE GROUP



**Builder:** Overmarine Group

**Year Built:** 2006

**Model:** Motor Yacht

**Price:** PRICE ON APPLICATION

**Location:** Italy

**LOA:** 82' 0" (25.00m)

**Beam:** 19' 9" (6.00m)

**Max Draft:** 4' 10" (1.45m)

**Cruise Speed:** 40 Kts. (46 MPH)

**Max Speed:** 47 Kts. (54 MPH)

Our experienced yacht broker, Andrey Shestakov, will help you choose and buy a yacht that best suits your needs PELEU K — Overmarine Group from our catalogue. Presently, at Shestakov Yacht Sales Inc., we have a wide variety of yachts available on our sale's list. We also work in close contact with all the big yacht manufacturers from all over the world.

If you would like to buy a yacht PELEU K — Overmarine Group or would like help answering any questions concerning purchasing, selling or chartering a yacht, please call +1(954)274-4435

# TABLE OF CONTENTS

---

TABLE OF CONTENTS	2
SPECIFICATIONS	4
Overview	4
Basic Information	4
Dimensions	4
Speed, Capacities and Weight	4
Accommodations	4
Hull and Deck Information	5
Engine Information	5
DETAILED INFORMATION	6
Accommodations	6
Navigation Equipment	6
On Board Equipment	6
Exclusions	6
Disclaimer	6
PHOTOS	8
DSC_2877 bis (FILEminimizer)	8
Imagine3bis	8
IMG-20171012-WA0064BIS	8
IMG-20171012-WA0048	8
DSC_2714 (FILEminimizer)	8
DSC_4811 (FILEminimizer)	8
DSC_2735 (FILEminimizer)	9
DSC_2724 (FILEminimizer)	9
DSC_2747 (FILEminimizer)	9
DSC_2731 (FILEminimizer)	9
20180918_115427 (FILEminimizer)	9
DSC_4797 (FILEminimizer)	9

---

DSC_2811 (FILEminimizer)	10
DSC_2786 (FILEminimizer)	10
DSC_2793 (FILEminimizer)	10
DSC_2811 (FILEminimizer)	10
DSC_2820 (FILEminimizer)	11
DSC_2813 (FILEminimizer)	11
DSC_2837 (FILEminimizer)	11
DSC_2861 (FILEminimizer)	11
Imagine32	11
<b>CONTACTS</b>	<b>12</b>
Contact details	12
Telephones	12
Office hours	12
Address	12

---

# SPECIFICATIONS

---

## Overview

---

Mangusta 80 in excellent general condition , with crew on board for the whole year and very beautiful pickled oak interior. COMMON RAIL engines - The asking price has to be intended plus VAT if due.UNIQUE interior and exterior LAYOUT In 2017/2018 new raisers and exhausts, heat exchangers and turbo overhauling - full arneson drives overhauling.In 2018/2019 batteries and battery charger have been replaced and the windlass has been overhauled.The boat is continuously and carefully serviced in great detail.

## Basic Information

---

**Category:** Motor Yacht

**Model Year:** 2006

**Year Built:** 2006

**Country:** Italy

**Vessel Top:** Hardtop

## Dimensions

---

**LOA:** 82' 0" (25.00m)

**Beam:** 19' 9" (6.00m)

**Max Draft:** 4' 10" (1.45m)

**MFG Length:** 76' 0" (23.16m)

## Speed, Capacities and Weight

---

**Cruise Speed:** 40 Kts. (46 MPH)

**Max Speed:** 47 Kts. (54 MPH)

**Displacement:** 110231.131 Pounds

**Gross Tonnage:** 57.3 Pounds

**Water Capacity:** 237.7548468 Gallons

**Fuel Capacity:** 1585.032312 Gallons

**Fuel Consumption:** 158.5032312 Gallons

## Accommodations

---

**Total Cabins:** 3

---

## Hull and Deck Information

---

**Hull Material:** Fiberglass

**Deck Material:** Teak

**Hull Color:** WHITE

**Hull Finish:** Steel

---

## Engine Information

---

**Engines:** 1

**Manufacturer:** MTU

**Model:** 16V2000 M92 Common Rail

**Engine Type:** Inboard

**Fuel Type:** Diesel

## DETAILED INFORMATION

---

### Accommodations

---

The main deck has a large air-conditioned cockpit with retractable 42" Sony tv, lounge with table and sofa, chaise longue, wetbar with okite worktop, Raritan icemaker, 2xFrigit refrigerators, sink and electric Miele barbecue – pilot house with 3 electric seats. The lower deck has an amidships full beam spacious living room with a huge chaise longue and an opposite lounge with sofa & table, 42" Nec led tv with Sky decoder and Lynn audio system. Separate galley with Miele appliances (ceramic hob, electric oven, microwave, washing machine) and fridge & freezer. Laundry room with Miele W1113 washer + Miele T7734 dryer, pantry and day-toilette. Forward master double cabin with private bathroom and separate large box shower + 25" Samsung tv + sat decoder + Lynn audio system. Two aft guest cabins, 1 double + 1 twin, each with its own private bathroom with box shower + 21" Sharp tv + sat decoder + Lynn audio system.

### Navigation Equipment

---

Electronica complete Raymarine full navigation equipment VHF Ray240ES Sailor Thrane & Thrane Echo Autohelm ST602 display multifunction radar & plotter Raymarine E120 Pilota automatico Autohelm ST8001 autopilot Ind. Angolo di barra Autohelm ST60 rudder ind. Level Furuno Navtex NX-300 Computer diagnostica motori MTU Elektronik engine diagnosis system

### On Board Equipment

---

Sanshin HR-1012 electric searchlight – BCS hydraulic bow thruster + Side Power electric bow thruster Sanguineti hydraulic gangway – Frigit reverse cycle air conditioning system KVH Tarcvision G8 tv sat system – Lynn audio system – 5 Tv + 5 sat decoders 2 Kohler 20 Efoz 20kw/230v/50 Hz (3650h) + Mastervolt 24/100-3 battery charger 120 lt/h Idromar desalination unit - CCTV system with engine room & cockpit camera Miele washing machine/washer/dryer – safe – Raritan icemaker – underwater lights 2xLofrans 1200w aft winches + 1xLofrans 2500w windlass – BCS hangar/swimming ladder/davit NE40 Novamarine tender (2013) + 40 hp Yamaha F40 Fets (2014) full emergency equipment – full set coverings & canvas

### Exclusions

---

Owner's personal belongings.

### Disclaimer

---

The Company offers the details of this vessel or yacht in good faith but cannot guarantee or warrant the accuracy of this information nor warrant the condition of the vessel. A buyer should instruct his representatives, agents, or his surveyors, to investigate such details as the buyer desires validated. This vessel or yacht is offered subject to prior sale, price change, or withdrawal without notice.

# PHOTOS

**DSC\_2877 bis (FILEminimizer)**



**Immagine3bis**



**IMG-20171012-WA0064BIS**



**IMG-20171012-WA0048**



**DSC\_2714 (FILEminimizer)**



**DSC\_4811 (FILEminimizer)**





DSC\_2735 (FILEminimizer)



DSC\_2724 (FILEminimizer)



DSC\_2747 (FILEminimizer)



DSC\_2731 (FILEminimizer)



DSC\_4797 (FILEminimizer)



20180918\_115427 (FILEminimizer)



DSC\_2811 (FILEminimizer)



DSC\_2786 (FILEminimizer)



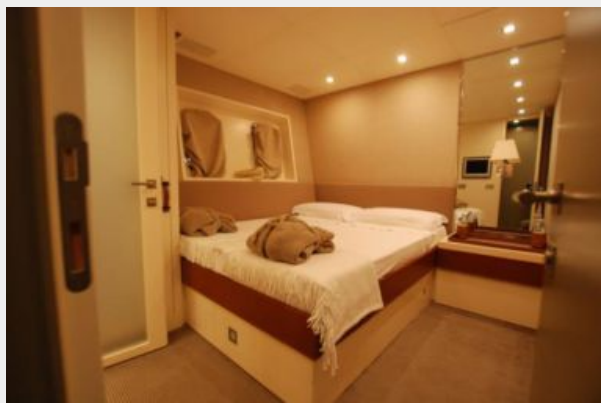
DSC\_2793 (FILEminimizer)



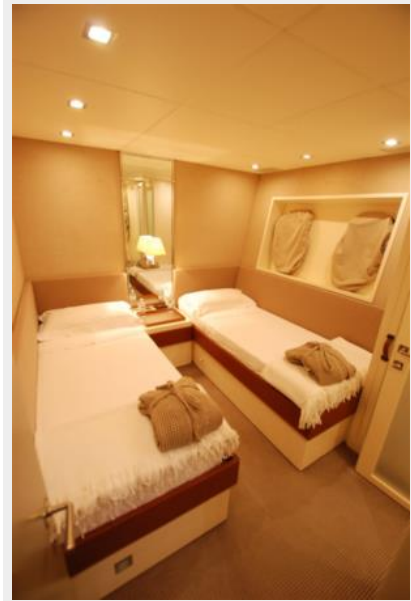
DSC\_2811 (FILEminimizer)



**DSC\_2813 (FILEminimizer)**



**DSC\_2820 (FILEminimizer)**



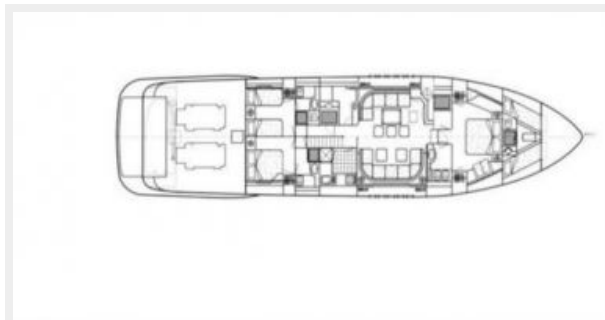
**DSC\_2837 (FILEminimizer)**



**DSC\_2861 (FILEminimizer)**



**Imagine32**



# CONTACTS

---

Andrey Shestakov, leading yacht broker of the sales department of Shestakov Yacht Sales Inc. Shestakov Yacht Sales Inc., the official representative of the Miami/Fort Lauderdale FL headquarters.

## Contact details

---

Email: **andrey@shestakovyachtsales.com**

Web: [shestakovyachtsales.com/en/](http://shestakovyachtsales.com/en/)

## Telephones

---

USA: +1(954)274-4435

## Office hours

---

Monday – Saturday: **9:00 - 21:00** EDT

Sunday: **closed**

## Address

---



Harbour Towne Marina, 850 NE 3rd St,  
STE 213, Dania, FL 33004