

## BEAZUR — CATALINA



**Builder:** CATALINA

**LOA:** 30' 0" (9.14m)

**Year Built:** 1983

**Beam:** 10' 10" (3.30m)

**Model:** Cruising/Racing Sailboat

**Price:** PRICE ON APPLICATION

**Location:** United States

Our experienced yacht broker, Andrey Shestakov, will help you choose and buy a yacht that best suits your needs **BeazUR — CATALINA** from our catalogue. Presently, at Shestakov Yacht Sales Inc., we have a wide variety of yachts available on our sale's list. We also work in close contact with all the big yacht manufacturers from all over the world.

If you would like to buy a yacht **BeazUR — CATALINA** or would like help answering any questions concerning purchasing, selling or chartering a yacht, please call **+1(954)274-4435**

---

# TABLE OF CONTENTS

---

TABLE OF CONTENTS	2
SPECIFICATIONS	3
Overview	3
Basic Information	3
Dimensions	3
Speed, Capacities and Weight	3
Accommodations	3
Hull and Deck Information	4
Engine Information	4
DETAILED INFORMATION	5
Overview	5
Exclusions	6
Disclaimer	6
PHOTOS	7
CONTACTS	11
Contact details	11
Telephones	11
Office hours	11
Address	11

---

# SPECIFICATIONS

---

## Overview

---

Beautifully maintained 1983 Catalina 30 Tall Rig with Fin keel, for great performance whether cruising or racing! Atomic Four gasoline auxiliary, Pedestal wheel steering, furling genoa all add to her ease of handling. Down below you are treated to a large main salon with complete galley, nav-center, settee, large U-shaped dinette with teak trim and updated cushions. This vessel is ready to take you cruising and/or club racing. The perfect blend of comfort and speed with the durable Catalina construction that has made this the most popular 30 sailboat of all time!

## Basic Information

---

**Category:** Cruising/Racing Sailboat

**Model Year:** 1983

**Year Built:** 1983

**Country:** United States

## Dimensions

---

**LOA:** 30' 0" (9.14m)

**LWL:** 25' 0" (7.62m)

**Beam:** 10' 10" (3.30m)

## Speed, Capacities and Weight

---

**Water Capacity:** 30 Gallons

**Holding Tank:** 12 Gallons

**Fuel Capacity:** 15 Gallons

## Accommodations

---

**Total Cabins:** 1

**Total Heads:** 1

---

## Hull and Deck Information

---

**Hull Material:** Fiberglass

---

## Engine Information

---

**Engines:** 1

**Manufacturer:** Universal

**Model:** Atomic 4d

**Engine Type:** Inboard

**Fuel Type:** Diesel

---

# DETAILED INFORMATION

---

## Overview

---

### Accommodations

Still one of the best floorplans in its class, large V-berth forward, enclosed head to port with hanging locker to stbd., massive port side U-shaped dinette that converts into a large double berth, settee to stbd sleeps one, outboard facing nav center, large double quarterberth aft, J-shaped galley. 6'2" headroom, fiberglass cabin sole, updated cushions, beautiful teak trim, 3-hatches and eight fixed ports.

### Galley

J-shaped galley with Formica counter tops, double stainless steel sink with hot and cold pressure water mixer, large top-loading refrigerated icebox, abundant storage drawers and shelves, microwave oven.

### Electronics

Pedestal mount compass, Autohelm ST4000 autopilot, Signet knotmeter, Signet Depth sounder, VHF radio at nav station with remote mic on deck, Stereo AM/FM/CD with two cabin and two cockpit speakers.

### Electrical

3-12 Volt batteries, 30 amp shore power with cord, AC/DC distribution panel, battery charger, hot water heater, pressure water pump, shower sump pump, 110V cabin outlets.

### Sails & Rigging

Dacron mainsail with full length battens and mainsail cover. 110% furling jib on Hyde Stream Stay furling system. Nylon spinnaker. Tall-Rig mast, deck stepped with single spreaders. S.S. wire standing rigging. Control lines led aft to cockpit. Mainsheet with traveler, self-tailing mainsheet winch and halyard winch mounted on cabin top. Two primary genoa sheet winches.

## Deck

Large wrap around cockpit with three lockers, Pedestal wheel steering, Stern pulpit with swim ladder, double lifelines with gates, anchor locker in bow with roller, teak handrails.

## Additional

Stainless steel frame cockpit bimini and dodger with full enclosure. Cockpit cushions, Teak pedestal table with leaves and drink holder. and table, Steel Cradle, Dripless shaft log, Docking, Mooring and Safety Equipment ( Bruce and Danforth Anchors with rode)

## Exclusions

---

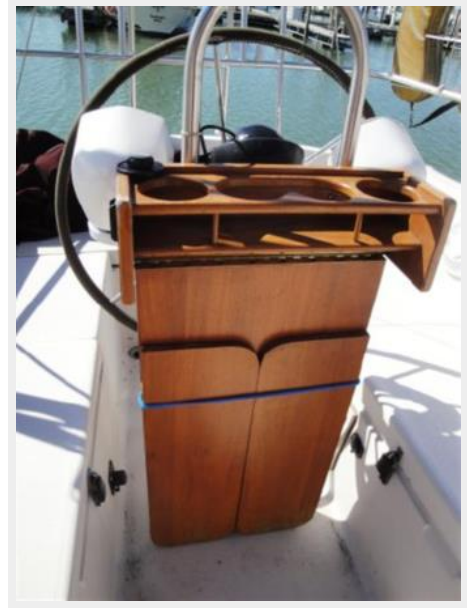
Owner's personal belongings.

## Disclaimer

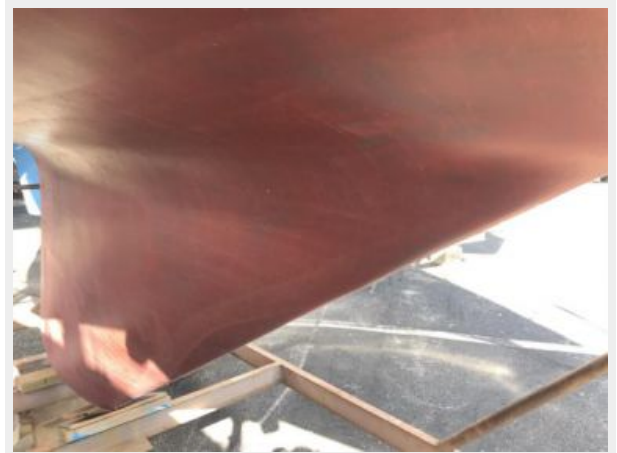
---

The Company offers the details of this vessel or yacht in good faith but cannot guarantee or warrant the accuracy of this information nor warrant the condition of the vessel. A buyer should instruct his representatives, agents, or his surveyors, to investigate such details as the buyer desires validated. This vessel or yacht is offered subject to prior sale, price change, or withdrawal without notice.

# PHOTOS













# CONTACTS

---

Andrey Shestakov, leading yacht broker of the sales department of Shestakov Yacht Sales Inc. Shestakov Yacht Sales Inc., the official representative of the Miami/Fort Lauderdale FL headquarters.

## Contact details

---

Email: [andrey@shestakovyachtsales.com](mailto:andrey@shestakovyachtsales.com)

Web: [shestakovyachtsales.com/en/](http://shestakovyachtsales.com/en/)

## Telephones

---

USA: +1(954)274-4435

## Office hours

---

Monday – Saturday: **9:00 - 21:00** EDT

Sunday: **closed**

## Address

---



Harbour Towne Marina, 850 NE 3rd St,  
STE 213, Dania, FL 33004