

BLUE CAPRICORN ONE — ETHEMOGLU SHIPYARD



Builder: ETHEMOGLU Shipyard

Year Built: 2004

Model: Motorsailor

Price: PRICE ON APPLICATION

Location: Turkey

LOA: 108' 4" (33.00m)

Beam: 26' 3" (8.00m)

Max Draft: 11' 6" (3.50m)

Cruise Speed: 12 Kts. (14 MPH)

Max Speed: 15 Kts. (17 MPH)

Our experienced yacht broker, Andrey Shestakov, will help you choose and buy a yacht that best suits your needs **BLUE CAPRICORN ONE — ETHEMOGLU Shipyard** from our catalogue. Presently, at Shestakov Yacht Sales Inc., we have a wide variety of yachts available on our sale's list. We also work in close contact with all the big yacht manufacturers from all over the world.

If you would like to buy a yacht **BLUE CAPRICORN ONE — ETHEMOGLU Shipyard** or would like help answering any questions concerning purchasing, selling or chartering a yacht, please call **+1(954)274-4435**

TABLE OF CONTENTS

TABLE OF CONTENTS	2
SPECIFICATIONS	4
Overview	4
Basic Information	4
Dimensions	4
Speed, Capacities and Weight	4
Accommodations	4
Hull and Deck Information	5
Engine Information	5
DETAILED INFORMATION	6
Accommodations	6
Navigation Equipment	6
On Board Equipment	6
Exclusions	6
Disclaimer	6
PHOTOS	7
470e7a4f017a5476afb7eeb3f8b96f9b_27-04-16_1461760098 (FILEminimizer)	7
2 (FILEminimizer)	7
prendisole 2 (FILEminimizer)	7
prua (FILEminimizer)	7
f899139df5e1059396431415e770c6dd_27-04-16_1461760155 (FILEminimizer)	8
ff4d5fbbafdf976cfdc032e3bde78de5_27-04-16_1461760204 (FILEminimizer)	8
52720e003547c70561bf5e03b95aa99f_01-12-16_1480621775 (FILEminimizer)	8
ingresso (FILEminimizer)	8
salone 2 (FILEminimizer)	9
salone (FILEminimizer)	9
53561b (FILEminimizer)	9
60176b (FILEminimizer)	9

e995f98d56967d946471af29d7bf99f1_27-04-16_1461760236 (FILEminimizer)	10
cucina (FILEminimizer)	10
cfee398643cbc3dc5eefc89334cacdc1_27-04-16_1461760269 (FILEminimizer)	10
eddea82ad2755b24c4e168c5fc2ebd40_27-04-16_1461760300 (FILEminimizer)	10
cabina con letti in piano (FILEminimizer)	10
cabina vip (FILEminimizer)	10
68053af2923e00204c3ca7c6a3150cf7_27-04-16_1461759956 (FILEminimizer)	11
CONTACTS	12
Contact details	12
Telephones	12
Office hours	12
Address	12

SPECIFICATIONS

Overview

This is a 33 mt caique extraordinary luxurious with 6 spacious cabins layout. The hull is built in laminated mahogany and teak, the superstructure in frames and plywood. Every winter she is carefully serviced. in 2019 the hull has been totally repainted in white and the 2 generators have been replaced. The asking price has to be inteded plus Vat if due.

Basic Information

Category: Motorsailor

Sub Category: Motorsailor

Model Year: 2004

Year Built: 2004

Country: Turkey

Dimensions

LOA: 108' 4" (33.00m)

Beam: 26' 3" (8.00m)

Max Draft: 11' 6" (3.50m)

Speed, Capacities and Weight

Cruise Speed: 12 Kts. (14 MPH)

Max Speed: 15 Kts. (17 MPH)

Displacement: 246917.73344 Pounds

Gross Tonnage: 140 Pounds

Water Capacity: 2377.548468 Gallons

Fuel Capacity: 1849.204364 Gallons

Accommodations

Total Cabins: 6

Sleeps: 12

Captain Cabin: True

Hull and Deck Information

Hull Material: Cold Molded Mahogany

Deck Material: Teak

Hull Color: BLUE

Hull Finish: Steel

Engine Information

Engines: 2

Manufacturer: MAN

Model: D2876

Engine Type: Inboard

Fuel Type: Diesel

DETAILED INFORMATION

Accommodations

Very large deluxe gulet with 6 spacious cabins, 2 master cabins with double bed and en-suite bathroom - 4 spacious twin bed cabins with en-suite bathroom, shower cubicles and house style flush toilets in all bathrooms. Large living room with fully equipped bar and dining facilities - fully equipped separate galley with electric and microwave oven, gas stove, deep freezer, refrigerator, icemaker and dishwashing machine. Spacious cushioned sun deck on the bow and on the aft deck with outdoor dining facilities. Separate crew quarters with their own bathroom.

Navigation Equipment

ssb / vhf Icomchart Plotter Furuno x2 Radar Furuno x 2 echosounder Furuno x 2 eFI-30 Multi Control Wind Station / Stazione ventopilota automatico Furuno Fap 201 x 2 rudder ind. level / ind. angolo di barra Gyro compass / Direction finder

On Board Equipment

reverse cycle Marine air conditioning in each cabin with independent control - 350 lt/h desalination unit - 2x22.5 kw Onan generators - tv sat system KVV + 2 plasma tv + dvd/cd/mp3 players + wi fi connection - washing and drying machine - icemaker - safe box in each cabins - 1 dinghy with Johnson 6.6hp outboard engine + 1 speedboat with Johnson 70hp outboard engine - hydraulic 55hp bow thruster. RIG: Schooner - furling Mainsail, furling mizzen, genoa and staysail - 500 square metres sail area - DECK FITTINGS: Harken USA, furling system full emergency equipment - sun mattresses - deck chairs - sun awnings - sea ladder

Exclusions

Owner's personal belongings.

Disclaimer

The Company offers the details of this vessel or yacht in good faith but cannot guarantee or warrant the accuracy of this information nor warrant the condition of the vessel. A buyer should instruct his representatives, agents, or his surveyors, to investigate such details as the buyer desires validated. This vessel or yacht is offered subject to prior sale, price change, or withdrawal without notice.

PHOTOS

2 (FILEminimizer)



470e7a4f017a5476afb7eeb3f8b96f9b_27-04-16_1461760098 (FILEminimizer)



prendisole 2 (FILEminimizer)



prua (FILEminimizer)



f899139df5e1059396431415e770c6dd_27-04-16_1461760155 (FILEminimizer)



ff4d5fbbafdf976cfdc032e3bde78de5_27-04-16_1461760204 (FILEminimizer)



52720e003547c70561bf5e03b95aa99f_01-12-16_1480621775 (FILEminimizer)



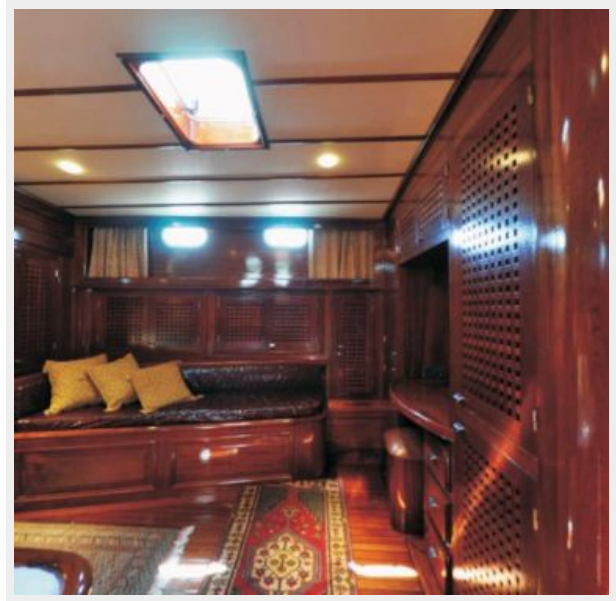
ingresso (FILEminimizer)



salone 2 (FILEminimizer)



salone (FILEminimizer)



53561b (FILEminimizer)



60176b (FILEminimizer)



cucina (FILEminimizer)



e995f98d56967d946471af29d7bf99f1_27-04-16_1461760236 (FILEminimizer)



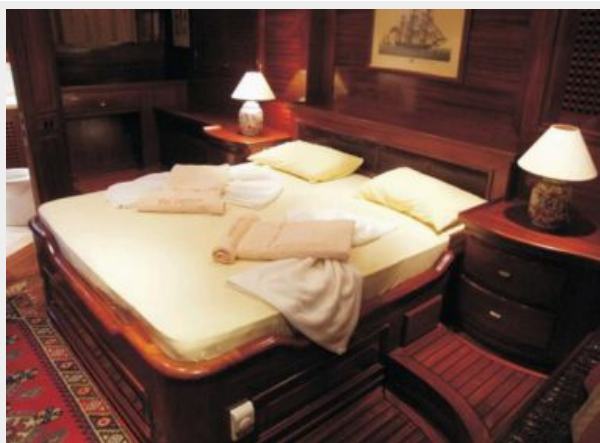
cfee398643cbc3dc5eefc89334cacdc1_27-04-16_1461760269 (FILEminimizer)



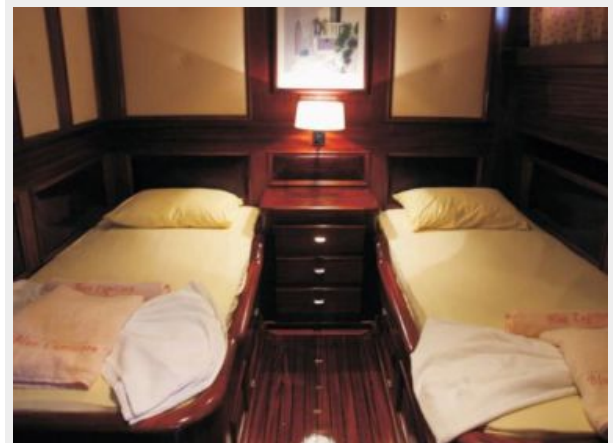
eddea82ad2755b24c4e168c5fc2ebd40_27-04-16_1461760300 (FILEminimizer)



cabina vip (FILEminimizer)



cabina con letti in piano (FILEminimizer)



68053af2923e00204c3ca7c6a3150cf7_27-04-16_1461759956 (FILEminimizer)



CONTACTS

Andrey Shestakov, leading yacht broker of the sales department of Shestakov Yacht Sales Inc. Shestakov Yacht Sales Inc., the official representative of the Miami/Fort Lauderdale FL headquarters.

Contact details

Email: andrey@shestakovyachtsales.com

Web: shestakovyachtsales.com/en/

Telephones

USA: +1(954)274-4435

Office hours

Monday – Saturday: **9:00 - 21:00** EDT

Sunday: **closed**

Address



Harbour Towne Marina, 850 NE 3rd St,
STE 213, Dania, FL 33004