

## 2004 HARGRAVE 68 MOTORYACHT — HARGRAVE



**Builder:** HARGRAVE

**Year Built:** 2004

**Model:** Motor Yacht

**Price:** PRICE ON APPLICATION

**Location:** United States

**LOA:** 68' 0" (20.73m)

**Beam:** 18' 6" (5.64m)

**Max Draft:** 5' 0" (1.52m)

**Cruise Speed:** 15 Kts. (17 MPH)

**Max Speed:** 18 Kts. (21 MPH)

Our experienced yacht broker, Andrey Shestakov, will help you choose and buy a yacht that best suits your needs 2004 Hargrave 68 Motoryacht — HARGRAVE from our catalogue. Presently, at Shestakov Yacht Sales Inc., we have a wide variety of yachts available on our sale's list. We also work in close contact with all the big yacht manufacturers from all over the world.

If you would like to buy a yacht 2004 Hargrave 68 Motoryacht — HARGRAVE or would like help answering any questions concerning purchasing, selling or chartering a yacht, please call +1(954)274-4435

---

# TABLE OF CONTENTS

---

TABLE OF CONTENTS	2
SPECIFICATIONS	3
Overview	3
Basic Information	3
Dimensions	3
Speed, Capacities and Weight	3
Accommodations	3
Hull and Deck Information	4
Engine Information	4
DETAILED INFORMATION	5
Overview	5
Exclusions	10
Disclaimer	10
PHOTOS	11
CONTACTS	22
Contact details	22
Telephones	22
Office hours	22
Address	22

---

# SPECIFICATIONS

---

## Overview

---

Meticulously maintained and shows extremely well. Hydraulic NAIAD Fin Stabilizer System, Bow- and Stern Thrusters. NEW GARMIN Touchscreen Electronics in 2019. All services up to date. 100% ready to go. Teak Decks aft, Stainless Steel Anchor, Many many updates and extras. A MUST SEE !

## Basic Information

---

**Category:** Motor Yacht

**Model Year:** 2004

**Year Built:** 2004

**Country:** United States

**Vessel Top:** Hardtop

**Fly Bridge:** Yes

## Dimensions

---

**LOA:** 68' 0" (20.73m)

**LWL:** 64' 0" (19.51m)

**Beam:** 18' 6" (5.64m)

**Max Draft:** 5' 0" (1.52m)

## Speed, Capacities and Weight

---

**Cruise Speed:** 15 Kts. (17 MPH)

**Max Speed:** 18 Kts. (21 MPH)

**Displacement:** 140000 Pounds

**Water Capacity:** 250 Gallons

**Holding Tank:** 130 Gallons

**Fuel Capacity:** 1500 Gallons

## Accommodations

---

**Total Cabins:** 3

**Total Berths:** 4

**Total Heads:** 4

---

## Hull and Deck Information

---

**Hull Material:** Fiberglass

**Hull Configuration:** Semi-Displacement

---

## Engine Information

---

**Engines:** 2

**Manufacturer:** Caterpillar

**Model:** 3406E

**Engine Type:** Inboard

**Fuel Type:** Diesel

---

# DETAILED INFORMATION

---

## Overview

---

### Accommodations

ISLAND GIRL offers an amazing amount of space with a very open feeling due to her unobstructed views from bow to stern on the main deck. Having two large cabins below allows for a huge Master with His and Her Heads for a very luxurious experience. Boarding is from either the swim platform and going up the port and starboard stairs or from one of four boarding doors (two aft and two forward). The spacious Aft Deck has both built in and loose seating, comfortable stairs to the Flybridge and easy access to the same level Salon. The Salon has a huge feel due to being full beam and open to the Galley and Pilothouse area forward. Steps in the Pilothouse lead down to the accommodation area below with en suite VIP Cabin forward and the enlarged Master Cabin aft. Although built as is today, the standard Twin Berth Cabin could quite easily be fitted into the forward portside of the Master. All AC ducts, controls, lighting and the Guest Head are already in place. The Master has a centerline queen size berth and a settee. Accessed via the swim platform is a Crew/Guest Cabin with over/under bunks and a private head and shower. The Flybridge is enormous with the davit and tender aft with a wet bar and BBQ just aft of the STRATAGLASS enclosed Flybridge. The Flybridge offers two U shaped seating groups with tables as well as twin forward facing seats flanking the centerline helm. SALON Entered via the starboard two of a three panel glass and stainless steel trimmed doors the entry doors are counter balanced for safety and can be atomically operated. The first thing one sees is the wide open Salon, Galley and Pilothouse with no obstructions. Being full beam with a small but safe walk around side deck the Salon is much larger than her sisterships. All the interior joinery is high gloss Anigre for a light refreshing look. Immediately to starboard is the Salon's entertainment center which was updated and includes a 40" Samsung LCD TV, a 3 Zone Bose US5 Lifestyle AM/FM/CD/DVD music system, a Blue Ray player, an Apple Airport Express for wireless music streaming, an iPod dock and a Bose Subwoofer, all hidden from view when not in use. Not only does the TV raise and lower but swivels as needed. Next forward are two swivel barrel chairs with a small burlwood table between. Outboard are hidden storage lockers under the side deck. To port entering the Salon starting aft is a dry bar with bottle and glass storage properly set into Lucite keepers. Going forward is a large five person sofa. At the fore and aft ends of the sofa are occasional chairs facing each other with a coffee table with a removable cushion and burlwood accents between. Two stools/seats with storage within upholstered to match the other seating creates a large seating group for up to nine people. At the forward end of the settee is a built in storage cabinet with two drawer set up to stow the new owner's dinnerware. Across to starboard is a matching storage cabinet both with burlwood tops. Next forward is the aft most granite countertop top of the Galley. Also in the Salon is a Bose 5 channel Surround music system, six large panel windows nicely framed to contain the Roman shades. Port and starboard louvered A/C delivery vents run the full length of the Salon. Above are wood and vinyl soffits with rope lighting behind with six overhead LED lights. There are also 16 additional overhead LED lights, a carpeted sole with a carpet runner and two wood columns that flank the sliding Aft Deck

doors that have full drapes to be drawn as needed.

**GALLEY**The Galley of the 68 Hargrave is open fore and aft with all below countertop appliances creating the unique wide open feeling available in some Hargrave models. Most equipment is located in the U shaped Galley area to port with a large bank of refrigeration and an icemaker to starboard. Equipment includes: Granite countertops Franke oversized stainless steel sink w/drain board Grohe faucets on pullout hose GE Profile Ceran top 4 burner cook top GE Profile stainless steel microwave convection oven built in below the countertop Stainless steel Fisher Paykel two drawer dishwasher GE stainless steel range hood GE garbage disposal (4) Stainless steel Sub Zero refrigerator drawers (2) Stainless steel Sub Zero freezer drawers Hoshizaki chipped Ice maker 95lbs/day - NEW Amtico Teak & holly sole (5) Cabinets below countertop (11) Cabinets above countertop (8) Storage Drawers Open storage cuddy with stainless steel rail Mirrored soffit area above aft Galley countertop (12) LED overhead halogen lights

**PILOTHOUSE**The Pilothouse area is adjacent and open to the Galley just aft. The sole is a contiguous teak and holly. The helm is centerline with an expansive dash just behind a three panel windshield. Access to the side decks is via port and starboard Pantograph doors. Including the doors there are nine panels of windows to offer excellent visibility. A raised Dinette to seat three faces aft and inboard with a small sliding table. A Pompanette Platinum Series helm chair is on centerline. The main DC panel is located here as well as two storage cabinets for safety gear. Equipment includes the following: Wood trimmed stainless steel helm wheel Hynautic hydraulic clutch & throttle controls 2 GARMIN 16" 3D plotter/radar/depth GARMIN Auto Guidance, AIS (2) CAT LCD gauge panels FLIR Night Vison - NEW Icom M602 VHF w/DSC Video monitor for NEW cameras GARMIN autopilot - NEW Naiad Multisea II stabilizer controls VDO rudder angle indicator Maxwell windlass controls Bennett trim tab controls w/indicator lights GARMIN digital depth - NEW Tankwatch 4 holding tank monitor (6) Bilge pump switches w/indicator lights & alarm audio/visual indicators Naiad joy stick bow- and stern thruster controls (3) Windshield wipers/washers - NEW (2) Sea Fire system monitors Start/stop w/key switches (2) Generator start/stop switches Low RPM switches (2) Wema fuel tank gauges (1) Wema freshwater tank gauge Vessel schematic w/indicators for pumps & Nav lights (2) Bose stereo speakers (1) Overhead LED light fixtures Epson 400 wireless printer

**COMPANIONWAY** Starting from the starboard side of the Pilothouse eight carpet steps with accent lights and individual carpet runners lead below. At the bottom of the steps is a small cabinet with burlwood accents, a marble top, two columns flanking a mirrored panel and an LED light above. One can go aft through double doors into the enlarged Master Suite or forward and up two steps into the en suite VIP Cabin. VIP Cabin All the way forward the VIP Cabin offers a queen size pedestal berth on centerline. There are two large drawers facing aft with rope lighting at the toe kick. The headboard is upholstered and set upon three beveled mirrored panels. Twin sconce lights serve as reading lights. Built in burlwood shelves serve as nightstands. Above is a burlwood shelf running the outboard perimeter of the cabin with sliding Soji panels that conceal an opening stainless steel porthole covered with Roman shades. A carpeted step either side of the berth assists entry. Next aft on both the port and starboard side are his and her cedar lined auto lit hanging lockers. On the portside is a Sharp 20" LCD TV and to starboard is the entry to the en suite Head. Also in this cabin is a soffit over the berth with two LED lights, six additional LED lights, two stereo speakers, digital AC controls, attractive wainscoting on the aft bulkhead and a carpeted sole. VIP Head The VIP Head is aft to starboard and has a teak and holly sole. The toilet is a Vacuflush model. The bow front vanity has two cabinet doors below, a granite

countertop, a Kohler under mount sink and a Grohe fixture. Four mirrored panels above serve as medicine cabinets and extra storage. Above the head are two additional cabinets. The stall shower has a clear glass bifold door, a teak grate sole, a small marble seat, a handheld or wall mountable fixture, an exhaust fan and a light. Also in the Head are three overhead LED lights.

**MASTER CABIN Suite Area** The Master Cabin was designed to incorporate the third cabin space and as such includes a second Head, settee in the area of the cabin's outboard berth and even the third cabin's AC system was utilized. Although it's hard to believe one would give up the space of the enlarged Master Cabin putting up a bulkhead and adding the berths back would be a relatively simple operation. The Master is entered via two curved doors. Immediately to starboard is a cabinet continuing the yacht's Laundry Facilities, a GE stacked Spacemaker Laundry Center. Immediately to port is the Master's second Head.

**DAY Head** The Secondary Master Head is forward to port and has a teak and holly sole. The toilet is a Vacuflush model. The bow front vanity has two cabinet doors below, a granite countertop, a Kohler under mount sink and a Grohe fixture. Two mirrored panels above serve as medicine cabinets and extra storage. Above the head are two additional cabinets. There is an opening stainless steel porthole in the shower. The stall shower has a clear glass bifold door, a teak grate sole, a small marble seat, a handheld or wall mountable fixture, an opening stainless steel porthole, an exhaust fan and a light. Also in the Head are three overhead LED lights.

**MASTER CABIN** Exiting the second Head and going aft is a cedar lined auto lit hanging locker. Followed by a three person settee open to the Master berth area. Next aft is a built in bureau with three drawers, a Marantz audio/video Surround receiver, an LG Blue Ray player and a hidden air handler. The cabinets have a burlwood top. Above are six sliding Soji panels concealing two opening stainless steel portholes. Next aft is a full size double door cedar lined, auto lit hanging locker with four cedar drawers within. The Master berth itself is on centerline. The queen size berth has four large drawers below, rope lights in the toe kick and twin burlwood top nightstands with three drawers each. Above the upholstered headboard and flanked by two sconce lights is a curved soffit with mirrored panels, two reading lights and hidden rope lights around the border. At the foot of the berth is a popup 32" Sony TV built into a burlwood topped cabinet. To starboard is a matching two door full size, auto lit, cedar lined hanging locker. Next forward is a woman's vanity with an upholstered stool, hinged mirrored top and a storage drawer. Above are two sliding Soji screens over an opening stainless steel porthole. Next forward is access to the primary Master Head.

**Master Head** Located forward and to starboard in the Master the Primary Head has a teak and holly sole and a Vacuflush toilet. The bow front vanity has four cabinet doors below and a Kohler sink under mounted on a granite countertop. There are two large beveled mirror medicine cabinet doors above the sink as well as a linen locker. The shower has a clear glass bifold door, a teak grate sole, a granite seat, a wall mounted or handheld fixture, a light and an exhaust fan. Also in the Head is an opening stainless steel porthole behind sliding Soji screens, three overhead LED lights and an AC vent.

**FOREDECK** Fiberglass nonskid decks Maxwell 3500 anchor windlass w/through bow anchor system - NEW Motor Up & down foot switches for windlass anchor chain lock 125 lb. Polished Stainless anchor w/200' 1/2" chain - NEW (2) Hinged anchor locker access hatches Bow seat w/removable cushions & covers - NEW Bow Sunpad w/cushions and cover - NEW Port & starboard storage lockers in cabin trunk Deck fuel fills port & starboard Deck water fills port & starboard Deck waste pump out fitting portside Raised fiberglass bulwarks Welded stainless steel handrail around bow & side decks Welded stainless

steel handrail at house side above windows(3) Windshield washers & wipers - NEWInternational Navigation lightsPort & starboard Pantograph side deck entry doorsPort & starboard rail & gunwale gates for boarding(2) bow area speakers - NEWDual spring line cleatsOverhead LED courtesy lights in bridge overhand port & starboardChrome air horns - NEWFrameless cabin side & Pilothouse windowsCustom stainless rub rails 4" offset from hull AFT DECKFiberglass deck w/teak overlayBuilt in seating for 4 - 5 persons w/removable cushions & cover - NEW(5) Folding teak deck chairs w/Sunbrella cushions - NEWDual Pedestal hi/lo teak table w/stainless steel gear to raise/lower height - Refinished(11) Recessed overhead LED lights - NEW(2) Stereo speakers - NEW(4) Teak tread steps to swim platform w/hinged stainless steel gates port & starboard(9) Teak tread steps to Flybridge w/stainless steel handrailStarboard side fiberglass storage cabinetAft facing cameraIntegral fiberglass swim platform w/teak overlay(4) Port & (4) starboard courtesy lights on swim platform to Aft Deck steps - NEWStarboard side transom locker w/hot & cold shower & dockside water inletCustom Marquipt Tide Ride storage ladder7-Step Marquipt Tide Ride boarding ladder - NEWLarge Bollard type cleats w/stainless steel fairleads on Aft Deck(2) foot operated Capstans - NEW(2) Stainless steel rod holdersTextuline Aft Deck sunshade (3 sides) - NEW(4) Stainless steel hoop rails at swim platformShore water hookup w/pressure regulator FLYBRIDGE Equipment3 Independently operated Air-conditioning unitsFiberglass nonskid decksAft facing portside wet bar w/U Line (2012) refrigerator, stainless sink & single lever faucet under hinged top w/3 shelf storage cabinet & keepers on bar topAft facing starboard side Jen-air grill under hinged top w/storage below & keepers on bar topFull stainless steel rails around Boat DeckQuick Lift approx. 1000 lb. davit on Pyramid base mount - Rebuilt w/NEW actuator motor and fresh PaintTender chocks - NEWIntegral arch & fiberglass hardtopAft facing camera from Boat DeckFully enclosed Flybridge Strataglass Enclosures (2018) w/medium tint - NEW(9) Recessed overhead lights in hardtopIntegrated Fusion Radio w/ (4) Recessed stereo speakers in hardtop - NEWTwin U shaped fiberglass seating groups w/removable cushions, covers & storage belowFiberglass table at each seating group w/stainless steel pedestalPompanette Platinum Series helm chair w/folding footrest (new 2012)Port & starboard bench seats facing forward w/removable cushions, covers & storage belowPort & starboard storage areas under helm areaHeavy Duty 1/2" Lexan Venturi windshield (new 2012) w/stainless steel railSliding Lexan access hatch over bridge stairs w/safety rail - NEWCustom "Starboard" bar storage for glasses, icemaker, phones, etc.(2) Additional speakers in overhang by grill & bar(5) Additional lights in overhang by grill & barRemovable stainless steel rod holder of aft Flybridge railFlag & flagstaff from Boat Deck TENDERAB Nautilus RIB 14 hard bottom inflatableYamaha 60 HP, 4 stroke OBBilge pumpHelm seatHelm steering w/windshieldRitchie compassFuel gaugeSpeedometerTachometerFuel filterBattery shutoff switch12 Volt batteryMid seatBow seatNavigation lightsCustom tender chocksFull tender cover - NEWNavigation Equipment (Flybridge)Stainless steel Destroyer wheel6" Danforth Constellation compass(2) CAT LCD engine monitor panelsGarmin autopilotIcom M602 VHF w/DSCTrim tab controls w/indicatorsHynautic hydraulic clutch & throttle controlsNaiad joy stick bow- and stern thruster controlsNaiad Multisea II stabilizer controlsVDO rudder angle indicatorMaxwell anchor windlass control(6) Bilge pump indicator lights(5) Bilge high alarm lights w/audible buzzerACR RCL 100 searchlight controlACR 406 EPIRB(2) 12 Volt outletsLCD camera monitorGarmin digital depth meter - NEWStart/stop buttonsLow idle selectorFusion stereo AM/FM/CDiPod connectors for FusionHelm cover CREW CompanionwayAccessed via a watertight door on the



swim platform the Crew Companionway is three steps down to a teak and holly sole. In this area is the main AC service panel, the Engine Room access all the way forward on centerline, the Crew Cabin to port and the Crew Head to starboard. Also in this area is a U Line refrigerator, a GE microwave oven, four overhead light fixtures, an emergency hatch to the Aft Deck and access hatches to the strut bolts. Crew Cabin To port is a private Crew Cabin with a fixed lower berth and a Pullman upper berth athwartships forward. Each berth has a reading light. There is storage below the lower berth, a full size auto lit, cedar lined hanging locker outboard and four cabinets aft with a shelf above. Three more small storage lockers are above. Also in this cabin is a teak and holly sole, four overhead recessed lights, Dynex 19" LCD TV/DVD player, Cruiseair SMX AC controls, reading lights and two stereo speakers. Crew Head Opposite to starboard is the Crew Head with a teak and holly sole, a Sea Land Vacuflush head, a marble top vanity with an inset sink, storage below the vanity, a mirrored two door medicine cabinet over the vanity and a stall shower. The shower has a teak grate sole, a light, an exhaust fan, a bifold clear glass door, a marble seat and a handheld or wall mountable Grohe shower fixture. There are also two overhead lights and an opening stainless steel porthole with a privacy shade.

ENGINE ROOM(2) 33.8 lb. FE 241 Sea Fire Engine Room fire suppression systems(2) AC intake blowers - NEW(2) AC extractor blowers - NEWHydraulic steering reservoir w/pressure gauge Autopilot drive pump - NEWReverso 6 point oil change pump & manifold Glendinning 220V 50 amp cable master Blue Water Desalination water maker w/Auto Flush - NEWPTO off starboard engine for Naiad stabilizer/thruster system(4) AC LED lights - NEW(4) DC incandescent lights Puma air compressor for horn/ship's services Deck wash down pump Dripless shaft seals on propulsion shafts Engine hour meters Head Hunter MACH-1 AC freshwater pump - NEW MACH-1 DC backup freshwater pump Torrid 30 gallon electric water heater w/engine heat exchanger Engine Room freshwater spigot w/hose(2) Air conditioning raw water circulating pumps - NEW NEW Bilge Pumps(6) Cruiseair air conditioning compressor units: Salon 24,000 BTU, Galley 16,000 BTU, Master 16,000 BTU, Master 7000 BTU, VIP 7000 BTU, Crew 7000 BTU(2) 750 Gallon aluminum fuel tanks w/manifold Davit electro/hydraulic power pack Stabilizer raw water cooling pump Dual Racor 1000 fuel filters w/vacuum gauge for each engine Racor 500 fuel filter for each generator Kidde dry chemical fire extinguisher Removable diamond plate deck plates, finished in white Awlgrip - NEW Hand operated bilge pump - Rebuilt New(2) Fuel tank site gauges ZF 350 A transmissions w/2.077 to 1 ratio Air Sep crankcase ventilation system(2) Shower sumps Five blade main propellers - Just Serviced 2 3/4 Stainless steel shafts 125 Gallon fiberglass waste tank Stainless steel safety rails around both main engines Naiad HPS bow thruster 10 HT 25 HP thruster 300mm Stern Thruster - NEW Y valve for dockside pump outs Sea Land macerator pump Alarms for low oil pressure & high engine temperature View window in Engine Room door Naiad #254 stabilizer system w/7.5 sq. ft. fins & Multisea 2000 controls Bennett 42" x 12" trim tabs(4) Coolant recovery bottles Custom port & starboard shelving, new 2012 Four step swim ladder stowed in Engine Room Workbench w/vice Stainless steel safety rail around engines Overhead rod storage for (4) rods Exhaust risers, hoses, mixers, etc. New 2012 from the turbo to the stern tube. LAZARETTE Steering activator Rudder angle feedback sensor Freshwater distribution manifold(2) Overhead lights Access area to starboard rudder for emergency tiller operation w/emergency tiller Aft high water alarm Crew shower sump(5) Blue Ocean LED underwater lights - NEW ELECTRICAL System 12/24 Volt DC electrical system 110/220 Volt AC electrical system(4) 12 Volt batteries for engine battery bank - NEW(4) 12 Volt batteries for ship's

service bank - NEW(2) 12 Volt batteries for generatorAcme shore power isolation transformerPortside Onan 27.5 KW generator in sound box, 2992+ hoursStarboard Onan 27.5 KW generator in sound box, 2981+ hoursShore power main inlet breaker, Engine Room aftDolphin 24 volt 80 amp service (house) battery chargerDolphin 24 volt 30 amp engine battery chargerDolphin 12 volt 30 amp generator battery charger(2) Dolphin 24 volt 80 amp power supply to upper/lower deck lighting relays(4) Battery cutoff switchesBattery parallel switch(2) 12 Volt batteries for windlass operation under VIP berthGalvanic isolator system100 Amp Glendinning cable master w/100' cordMain Crew Area AC electrical panelAC 230 Volt system 1 w/digital amp & voltmeter & (15) breaker protected circuitsAC 230 Volt system 2 w/digital amp & voltmeter & (10) breaker protected circuitsAC 115V system 2 L1 w/digital amp & voltmeter & (12) breaker protected circuitsAC 115V system 2 L2 w/digital amp & voltmeter & (12) breaker protected circuitsDigital frequency meterBlower switchesGenerator start stop switchDigital battery voltage meter w/7 positionsMain Pilothouse DC electrical panelDigital volt & amp meterBattery selector switch to read battery condition & load(39) Breaker protected 24 volt circuits(9) Breaker protected 12 volt circuits(2) Sump pump manual/auto selector switchesMain service battery on/off switch ExclusionsWhile every effort was made to list all pertinent included equipment aboard ISLAND GIRL, there are some personal belongings aboard. Prospective purchasers should assume any item not specifically mentioned herein will not convey at closing.

## Exclusions

---

Owner's personal belongings.

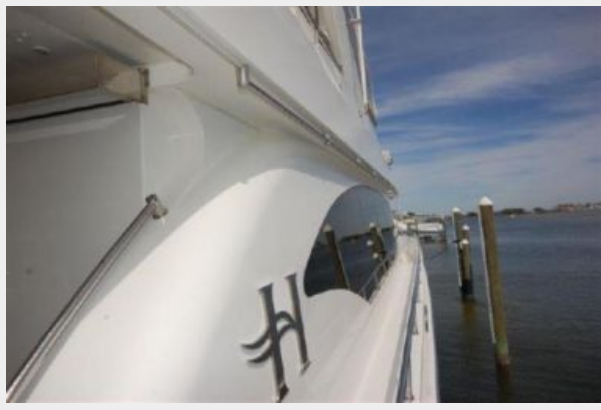
## Disclaimer

---

The Company offers the details of this vessel or yacht in good faith but cannot guarantee or warrant the accuracy of this information nor warrant the condition of the vessel. A buyer should instruct his representatives, agents, or his surveyors, to investigate such details as the buyer desires validated. This vessel or yacht is offered subject to prior sale, price change, or withdrawal without notice.

# PHOTOS





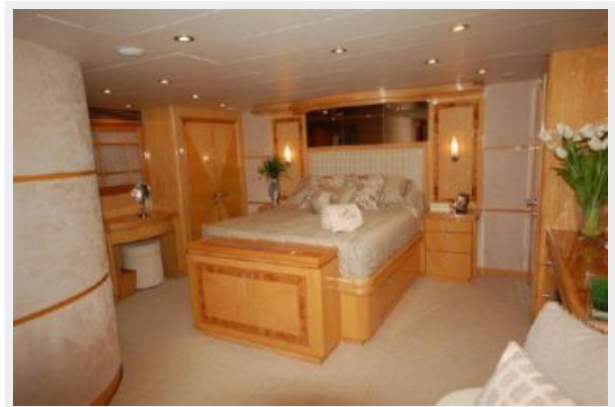




















---

# CONTACTS

---

Andrey Shestakov, leading yacht broker of the sales department of Shestakov Yacht Sales Inc. Shestakov Yacht Sales Inc., the official representative of the Miami/Fort Lauderdale FL headquarters.

---

## Contact details

---

Email: [andrey@shestakovyachtsales.com](mailto:andrey@shestakovyachtsales.com)

Web: [shestakovyachtsales.com/en/](http://shestakovyachtsales.com/en/)

---

## Telephones

---

USA: +1(954)274-4435

---

## Office hours

---

Monday – Saturday: **9:00 - 21:00** EDT

Sunday: **closed**

---

## Address

---



Harbour Towne Marina, 850 NE 3rd St,  
STE 213, Dania, FL 33004