

## DOJO — FEADSHIP



**Builder:** FEADSHIP

**Year Built:** 1981

**Model:** Motor Yacht

**Price:** PRICE ON APPLICATION

**Location:** Monaco

**LOA:** 150' (45.72m)

**Beam:** 25.32

**Max Draft:** 8' 3" (2.5m)

**Cruise Speed:** 13.5 Knots Kts. (16 MPH)

**Max Speed:** 15 Knots Kts. (17 MPH)

Our experienced yacht broker, Andrey Shestakov, will help you choose and buy a yacht that best suits your needs **DOJO — FEADSHIP** from our catalogue. Presently, at Shestakov Yacht Sales Inc., we have a wide variety of yachts available on our sale's list. We also work in close contact with all the big yacht manufacturers from all over the world.

If you would like to buy a yacht **DOJO — FEADSHIP** or would like help answering any questions concerning purchasing, selling or chartering a yacht, please call **+1(954)274-4435**

---

# TABLE OF CONTENTS

---

TABLE OF CONTENTS	2
SPECIFICATIONS	3
Overview	3
Basic Information	3
Dimensions	3
Speed, Capacities and Weight	4
Accommodations	4
Hull and Deck Information	4
Engine Information	4
PHOTOS	5
CONTACTS	12
Contact details	12
Telephones	12
Office hours	12
Address	12

---

# SPECIFICATIONS

---

## Overview

---

DOJO completed substantial refits from 2015 through to 2018 and now represents a unique opportunity to purchase a classic pedigree Feadship with all the features of a much newer yacht. She is without question one of the best rebuilds of this classic era of Feadship.

DOJO is a 45.72m Feadship motor yacht of contemporary design built in 1981 by the De Vries Shipyard to the designs of Jon Bannenberg.

### FEATURES:

Pedigree Feadship with classic Bannenberg exterior

Privately owned with low levels of use

Comprehensive maintenance schedule throughout ownership

Twin 935hp Caterpillar engines, maximum speed approx. 15 knots /impressively low engine hours

---

## Basic Information

---

**Category:** Motor Yacht

**Model Year:** 1981

**Year Built:** 1981

**Country:** Monaco

---

## Dimensions

---

**LOA:** 150' (45.72mm)

**Beam:** 25.32

**Max Draft:** 8' 3" (2.5mm)

---

## Speed, Capacities and Weight

---

**Cruise Speed:** 13.5 Knots Kts. (16 MPH)

**Max Speed:** 15 Knots Kts. (17 MPH)

**Gross Tonnage:** 369 Pounds

**Water Capacity:** 13000 Gallons

**Fuel Capacity:** 11887.74 Gal Gallons

---

## Accommodations

---

**Total Cabins:** 5

**Sleeps:** 11

**Crew Cabin:** 10

---

## Hull and Deck Information

---

**Hull Material:** Steel

**Hull Configuration:** Full Displacement

**Hull Designer:** Fritz De Voogt, The Netherlands

**Exterior Designer:** Bannenberg & Rowell Design

---

## Engine Information

---

**Engines:** 2

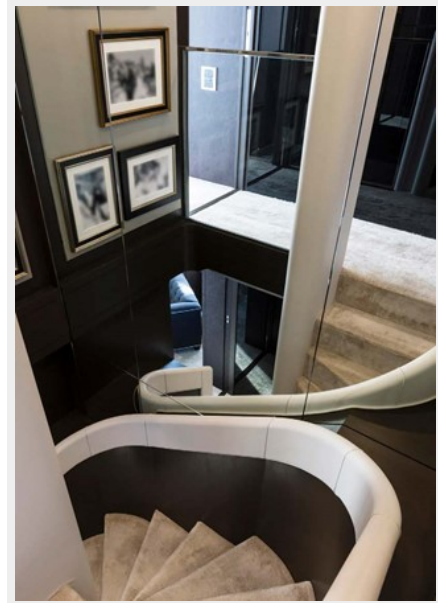
**Manufacturer:** Caterpillar

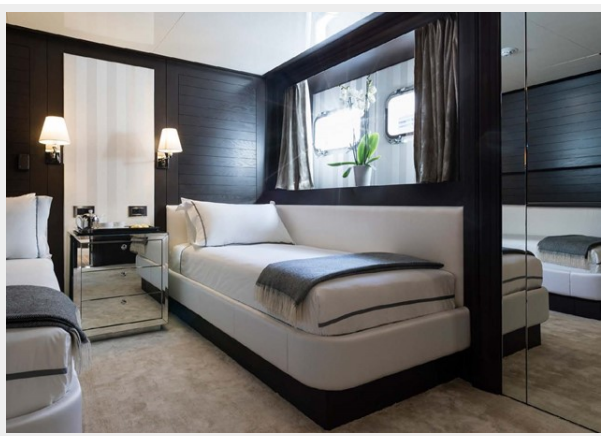
**Fuel Type:** Diesel

# PHOTOS

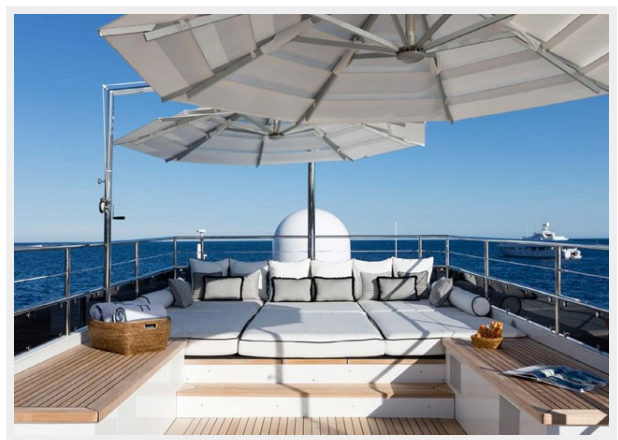
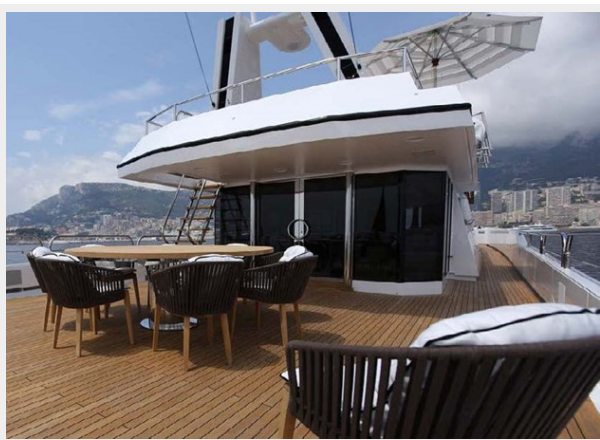


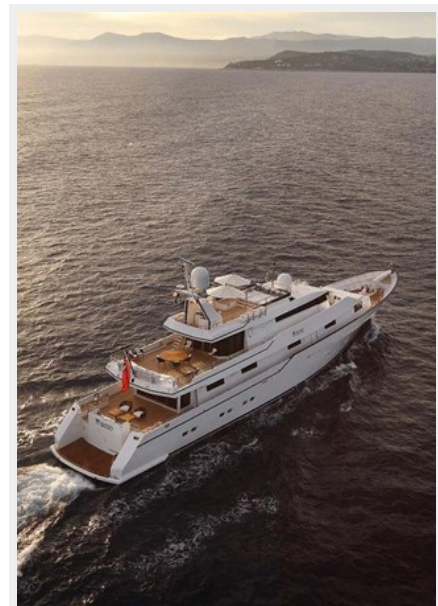
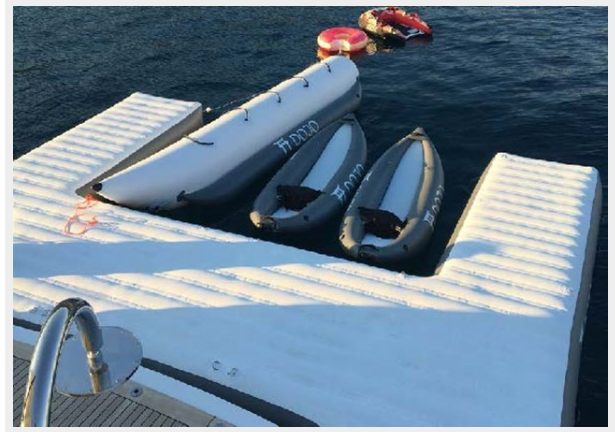


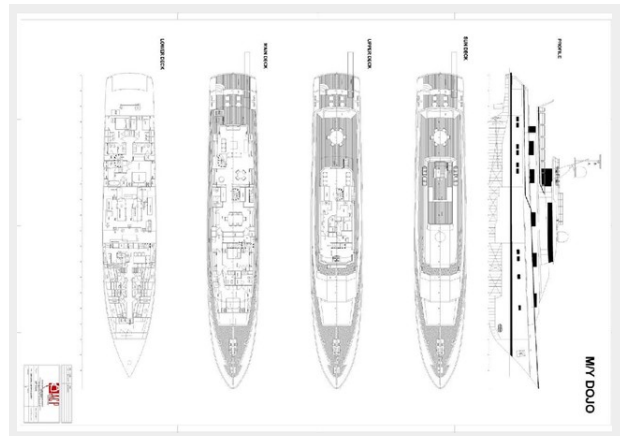












# CONTACTS

---

Andrey Shestakov, leading yacht broker of the sales department of Shestakov Yacht Sales Inc. Shestakov Yacht Sales Inc., the official representative of the Miami/Fort Lauderdale FL headquarters.

## Contact details

---

Email: [andrey@shestakovyachtsales.com](mailto:andrey@shestakovyachtsales.com)

Web: [shestakovyachtsales.com/en/](http://shestakovyachtsales.com/en/)

## Telephones

---

USA: +1(954)274-4435

## Office hours

---

Monday – Saturday: **9:00 - 21:00** EDT

Sunday: **closed**

## Address

---



Harbour Towne Marina, 850 NE 3rd St,  
STE 213, Dania, FL 33004