

MIZU — OCEANFAST



Builder: OCEANFAST

Year Built: 2004

Model: Motor Yacht

Price: PRICE ON APPLICATION

LOA: 174' (53.04mm)

Beam: 29

Max Draft: 8' 3" (2.5mm)

Cruise Speed: 24 Knots Kts. (28 MPH)

Max Speed: 28 Knots Kts. (32 MPH)

Our experienced yacht broker, Andrey Shestakov, will help you choose and buy a yacht that best suits your needs **MIZU — OCEANFAST** from **our catalogue**. Presently, at **Shestakov Yacht Sales Inc.**, we have a wide variety of yachts available on **our sale's list**. We also work in close contact with all the big **yacht manufacturers** from all over the world.

If you would like to buy a yacht **MIZU — OCEANFAST** or would like help answering any questions concerning purchasing, selling or chartering a yacht, please call **+1(954)274-4435**

TABLE OF CONTENTS

TABLE OF CONTENTS	2
SPECIFICATIONS	6
Overview	6
Basic Information	8
Dimensions	8
Speed, Capacities and Weight	8
Accommodations	8
Hull and Deck Information	9
Engine Information	9
PHOTOS	10
Profile	10
Profile	10
Profile	10
Profile	10
Profile	10
Bow	11
Bow	12
Bow	12
Guest Head Newport	13
Stateroom Newport	13
Stateroom Newport	13
Guest Head Annapolis	14
Guest Head Annapolis	14
Guest Head Annapolis	14
Guest Head Charleston	14
Guest Head Charleston	15
Stateroom Charleston	15
Guest Head Norfolk	15

Stateroom Charleston	15
Guest Head Norfolk	16
Stateroom Norfolk	16
Captain Quarters	16
Crew Quarters	16
Crew Quarters	17
Crew Quarters	17
Crew Quarters	17
Crew Quarters	17
Crew Quarters	17
Crew Quarters	18
Crew Quarters	18
Dining	18
Dining	18
Galley	19
Galley	19
Galley	19
Galley	19
Hallway	20
Galley	20
Hallway	20
Stairs	20
Stairs	21
Stairs	21
Stairs	21
Master Closet	21
Master Bath	22
Master Bath	22
Master Bath	22
Master Stateroom	22

Master Stateroom	23
Master Salon	23
Master Salon	23
Master Salon Aft Deck	23
Master Salon Aft Deck	23
Master Salon Aft Deck	23
Master Salon Aft Deck	24
Pilot House	24
Pilot House	24
Pilot House	24
Pilot House	24
Pilot House	24
Salon	25
Salon	25
Salon	25
Sky Deck	25
Sky Deck	25
Sky Deck	25
Engine Room	26
Sky Deck	26
Engine Room	26
Engine Room	26
Engine Room	27
Engine Room	27
Engine Room	27
Engine Room	27
Engine Room	27
Engine Room	28
Engine Room	28
Engine Room	28

Engine Room	28
CONTACTS	29
Contact details	29
Telephones	29
Office hours	29
Address	29

SPECIFICATIONS

Overview

To schedule a private FaceTime or video tour, contact me and make arrangements.

In Japanese philosophy, there are five elements, of which Mizu or water is one. It represents all things fluid and flowing but also relates to adaptability, flexibility and magnetism. Renamed by her current owner in 2011 and extensively refit in 2016, 53m MIZU represents many characteristics attributed to her name. Her striking and almost military exterior exudes character and adventure. Her contemporary interior spaces are calm yet vibrant and an impressive range of entertainment features, including an on-deck jacuzzi and basketball court, evoke guest interaction and energy. With an exhilarating top speed of 28 knots and an impressive long-range cruising capability, this ocean-going yacht lives up to her name. ***Not available for sale to U.S. residents, while in U.S. waters***

Overview

The 53m yacht was custom built in 2004 by Oceanfast in Australia & was last refitted in 2016 with well over \$5m USD spent. Sam Sorgiovanni is responsible for her beautiful & unique exterior & interior design. Originally named Sea Bowld, "MIZU" is built to explore the world's oceans in style & comfort. Constructed with an Aluminium hull & Aluminium superstructure, she is capable of cruising at 24 knots, a max speed of 28 knots & affords a range of 4,500 nautical miles. "MIZU" is built to some of the highest standards in the world, giving her a perfect combination of luxury & grit.

Specifications ● Year Built - 2004 ● Builder - Oceanfast ● Type - Fast Performance Long Range Motor Yacht HSS ● Classification - Germanischer Lloyds + 100 A5 OC4 Motor Yacht + MC AUT ● Flag - Cayman Islands ● Hull Number - 078

Dimensions & Tankage ● Length O.A. - 53.03m (174') ● Beam - 8.84m (29') ● Draft - 2.5m (8' 2") ● Fuel - 88,300 Litres (23,326.38 US Gallons) ● Water - 15,200 Litres (4,015.42 US Gallons) ● Lube Oil - 2,200 Litres (581.18 US Gallons) ● Dirty Oil 2,300 Litres (607.60 US Gallons) ● Grey Water - 6,200 Litres (1,637.87 US Gallons) ● Black Water - 4,900 Litres (1,294.44 US Gallons) ● Bilge Oil - 2,000 Litres (528.34 US Gallons)

Tonnage ● Gross - 498 Tons ● Displacement - 378 Tons (Full Load)

Construction ● Hull & Superstructure - Aluminium ● Interior / Exterior Designer - Sam Sorgiovanni

Accommodations ● Guests - 10 Guests in 5 Cabins ● Crew - 8 Crew in 4 Cabins Plus 2 in Captain's Cabin

Refit ● Year Completed - 2016 ● Budget - Excess of \$5m USD, Full Breakdown Available

Mechanical Equipment ● Main Engines - 2 x MTU 16V4000 M90 ● Engine Hours August 2018 ● Port Main Engine - 3,485 hrs ● Starboard Main Engine - 3,485 hrs ● Gearbox - 2 x ZF Reverse Reduction Gearboxes (ZF7540) ● Fuel - Diesel ● Propulsion - Twin Screw ● Propellers - 2 x Brunton Fixed Pitch Propellers (1590mm) ● Rudder Angle - ± 35 Degrees ● Steering System - Seastate Hydraulic Steering System ● Stabilizers - Seastate Ride Control System ● Bow thruster - Quantum Thruster QT120 ● Generators - 2 x Northern Lights 150kW(E) (M6108AZ) ● Generator Hours August 2018 - Port: 10,533 HRS - Starboard: 3,861 HRS ● Electricity - 120/208/440V/60Hz ● Shore Power - 2 x 100Amp / 480V ● Main Engine Start - 24V DC Starting Batteries (4 x 12V, 200Ah) ● Service - 24V DC Power for Non-Essential Services ● Generator Start - 24V DC Starting Batteries (4 x 12V, 200Ah) ● Air Conditioning - N.R. Koeling BV, 3 x Air Handler Units ● Water Maker - H.E.M. Duplex 30/2100 RO Plants (16,000 litres/day total) ● Water System - H.E.M. Type 3300 Water Treatment Plant ● Toilet System - JETS Vacuum Toilet System ● Sewage System - Hamann Wassertechnik Sewage Treatment Plant (STP) ● Fuel Centrifuge - Alfa Laval MAB104 ● Fuel Separator - Racor Fuel Separator

Audio and Visual ● Savant Control System ● Sonance Interior Speakers ● JL Audio Exterior Speakers

Electronics, Communication and Navigation: ● Satellite Compass - Furuno SC-60 ● Gyro Compass - C-Plath Navigate 2100 / SR2100 ● Automatic Pilot - C-Plath Navipilot V HSC ● Echo Sounder - Furuno Navigational Echo Sounder FE-700 ● Radar - Furuno X-Band FAR-2127 Furuno S-Band FAR-2137S ● AIS - Furuno Universal AIS FA-150 ● GPS - Furuno GPS Navigator GP-170 ● Chart Plotter - Transas Navi-Sailor 4000 ● Navtex - 1 x Furuno NX-500 ● Searchlights - 2 x Sanshin S.D. Searchlight ● Camera(s) - 7 x Pelco CCTV Cameras with Central Recording ● Satellite Communications - KVH V3-IP ● SASS & LRIT - 2 x Furuno Inmarsat C IC-306 ● Fleet Broadband - KVH V3-IP ● VHF - 7 x ICOM IC-M602 ● Portable VHF - 12 x ICOM UHF Radios ● SSB - 2 x ICOM FM-8500 ● Landline/Intercom - 4G LTE SIM & Internal Intercom System **Anchoring System** ● Anchor Windlasses - 2 x MUIR VRC18000 Polished SS Vertical Anchor Windlass ● (2) MUIR VR18000 Polished SS Vertical Mooring Windlass Capstans ● (2) 675kg Fully Balanced HHP Poole Anchors ● (2) Sections of 192.5m of 24mm Grade U3 Galvanized Studlink Chain

Boat Cranes and Davits ● (2) Nautical Structures EZ-5500-LD-MCA Hydraulic Deck Cranes ● Passerelle - Yacht-Tec Retractable Passerelle ● (2) Mar-Quipt 12-Step Sea Stair Side boarding ladders ● Jacuzzi ● Swim Platform ● Removable Sun Awnings Over Sundeck and After Upper Deck

Galley Equipment ● Vulcan Six Ring Electric Cooktop ● Vulcan Electric Combination Oven ● (2) Hobart Electric Combination Oven and Steamer ● Vulcan VMB Single Broiler (Grille), Built-In ● Miele Electric Deep Fryer ● Amana Microwave Oven ● Kitchen Aid Under Sink Waste Disposal Unit ● Hobart Dishwasher ● Subzero Full Height Wine Storage ● Subzero Full Height Refrigerator ● Scotsman Under Counter Compact Cuber Ice Maker ● General Electric Trash Compactor ● Fire Suppression Systems ● SEMCO Hi-Fog Water Mist, Fixed Fire Fighting System ● Concilium Fire Detection System ● Engine Room CO2 Fire Extinguishing System ● Portable Fire Extinguishers Fire Hoses and Nozzles ● Fireman's Outfit and Breathing Apparatus ● Security ● (7) Pelco CCTV Cameras and Central Recording ● (5) Viewing Locations (Bridge, Captain's Cabin, Crew Mess, Engineer's Cabin, Engine Control Room)

Basic Information

Category: Motor Yacht

Sub Category: Mega Yacht

Model Year: 2004

Year Built: 2004

Dimensions

LOA: 174' (53.04mm)

Beam: 29

Max Draft: 8' 3" (2.5mm)

Speed, Capacities and Weight

Cruise Speed: 24 Knots Kts. (28 MPH) **Max Speed:** 28 Knots Kts. (32 MPH)

Gross Tonnage: 498 Pounds

Water Capacity: 15200 Gallons

Holding Tank: 341.84 Gal Gallons

Fuel Capacity: 23326.39 Gal Gallons

Accommodations

Total Cabins: 5

Total Heads: 7

Hull and Deck Information

Hull Material: Aluminum

Deck Material: Teak

Hull Color: Pearl

Exterior Designer: Sam Sorgiovanni

Interior Designer: Sam Sorgiovanni

Engine Information

Engines: 2

Manufacturer: MTU

Engine Type: Inboard

Fuel Type: Diesel

PHOTOS

Profile



Profile



Profile

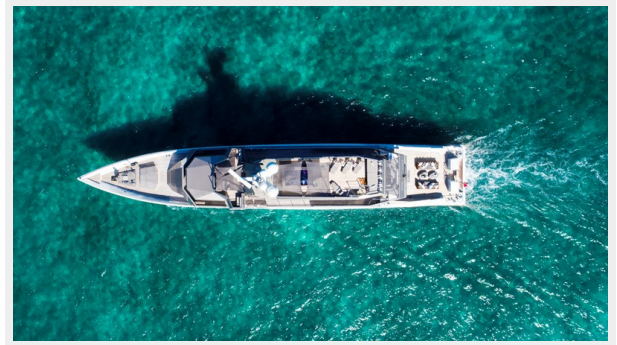


Profile



Profile





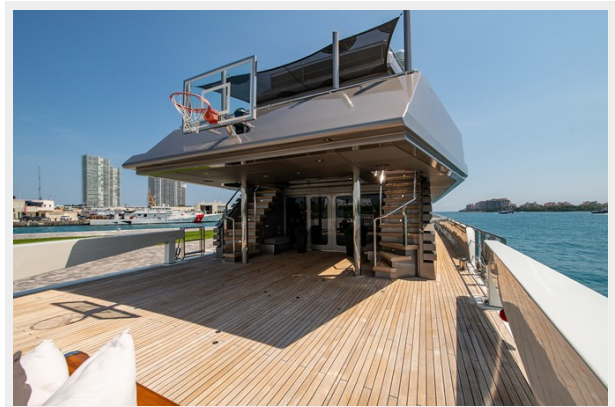
Bow



Bow



Bow



Guest Head Newport



Stateroom Newport



Stateroom Newport



Guest Head Annapolis



Guest Head Annapolis



Guest Head Annapolis



Guest Head Charleston



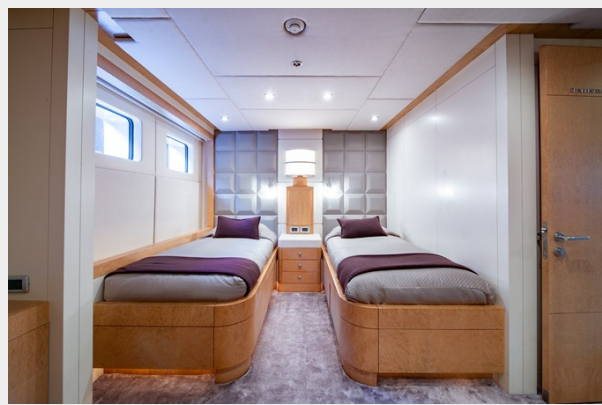
Guest Head Charleston



Stateroom Charleston



Stateroom Charleston



Guest Head Norfolk



Guest Head Norfolk



Stateroom Norfolk



Captain Quarters



Crew Quarters



Crew Quarters



Crew Quarters



Crew Quarters



Crew Quarters



Crew Quarters



Crew Quarters



Dining



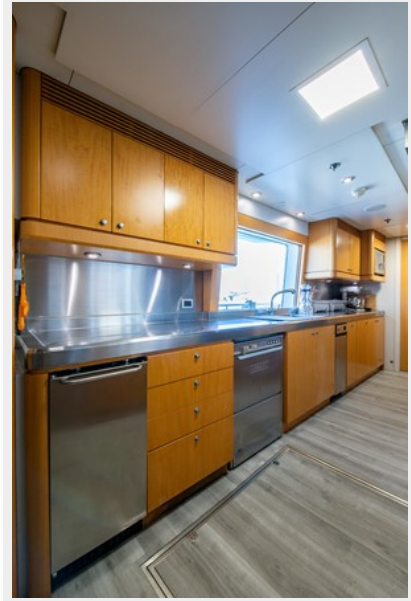
Dining



Galley



Galley



Galley



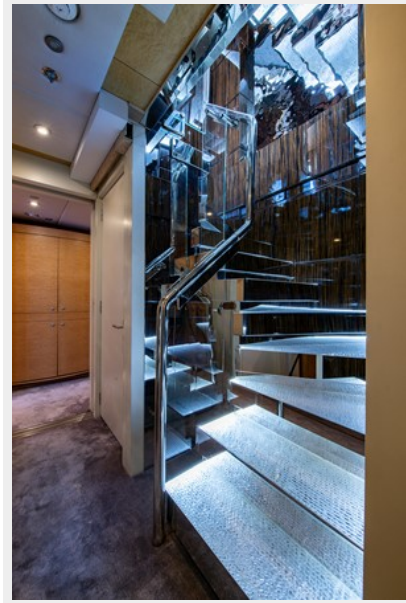
Galley



Galley



Hallway



Hallway



Stairs



Stairs



Stairs



Stairs



Master Closet



Master Bath



Master Bath



Master Bath



Master Stateroom



Master Stateroom



Master Salon



Master Salon



Master Salon Aft Deck



Master Salon Aft Deck



Master Salon Aft Deck



Master Salon Aft Deck



Pilot House



Pilot House



Pilot House



Pilot House



Pilot House



Salon



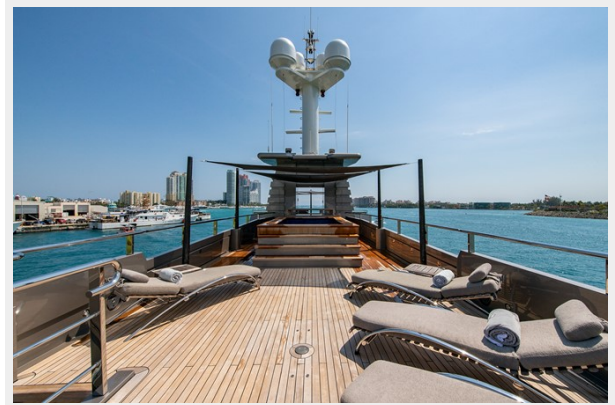
Salon



Salon



Sky Deck



Sky Deck



Sky Deck



Sky Deck



Engine Room



Engine Room



Engine Room



Engine Room



Engine Room



Engine Room



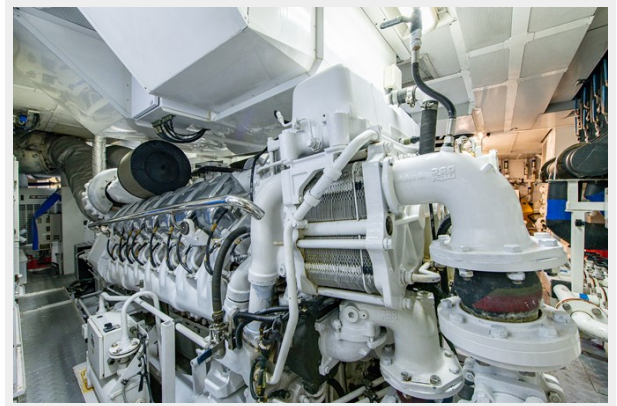
Engine Room



Engine Room



Engine Room



Engine Room



Engine Room



CONTACTS

Andrey Shestakov, leading yacht broker of the sales department of Shestakov Yacht Sales Inc. Shestakov Yacht Sales Inc., the official representative of the Miami/Fort Lauderdale FL headquarters.

Contact details

Email: **andrey@shestakovyachtsales.com**

Web: shestakovyachtsales.com/en/

Telephones

USA: **+1(954)274-4435**

Office hours

Monday – Saturday: **9:00 - 21:00** EDT

Sunday: **closed**

Address



Harbour Towne Marina, 850 NE 3rd St, STE 213, Dania, FL 33004