

1995 CATALINA 42 MK II — CATALINA



Builder: CATALINA

Year Built: 1995

Model: Cruising Sailboat

Price: PRICE ON APPLICATION

Location: United States

LOA: 42' 0" (12.80m)

Beam: 13' 10" (4.22m)

Max Draft: 4' 9" (1.45m)

Cruise Speed: 6 Kts. (7 MPH)

Max Speed: 7 Kts. (8 MPH)

Our experienced yacht broker, Andrey Shestakov, will help you choose and buy a yacht that best suits your needs 1995 Catalina 42 MK II — CATALINA from our catalogue. Presently, at Shestakov Yacht Sales Inc., we have a wide variety of yachts available on our sale's list. We also work in close contact with all the big yacht manufacturers from all over the world.

If you would like to buy a yacht 1995 Catalina 42 MK II — CATALINA or would like help answering any questions concerning purchasing, selling or chartering a yacht, please call +1(954)274-4435

TABLE OF CONTENTS

TABLE OF CONTENTS	2
SPECIFICATIONS	3
Overview	3
Basic Information	3
Dimensions	3
Speed, Capacities and Weight	4
Accommodations	4
Hull and Deck Information	4
Engine Information	4
DETAILED INFORMATION	5
Overview	5
Exclusions	6
Disclaimer	6
PHOTOS	7
CONTACTS	22
Contact details	22
Telephones	22
Office hours	22
Address	22

SPECIFICATIONS

Overview

This boat is in remarkable condition, you will never guess it was a 1995. She was commissioned brand new in the year 2000 and purchased by the sellers two years ago. She had her updated and outfitted to spend the next couple of years cruising the Mayan Coast, but unfortunately plans have changed. You do not want to miss out on this beauty. The 42 Catalina is the most popular 42' boat ever built for a reason; because people love them! You will to... Contact me today! This boat features the 2 Cabin, Pullman Owners Berth Layout. *Shoal Draft 4'9" - Wing Keel *Yanmar 50 HP Fresh Water Cooled Engine - 1700 Hours - Turn Key *Fisher Panda 4500 Generator w Sound Shield - 700 Hours - Turn Key *Brand New 16k BTU Air Conditioning - Ice Cold *All Brand New Canvas and Strata Glass - Double Bimini, Spray Hood*Brand New Cockpit Cushions*Brand New Custom Memory Foam Mattress For Owners Berth*All Brand New Port Lights - Re-Bedded - Dry As A Bone - No Leaks *Furling Mainsail Excellent Condition*130 Genoa is Good*New Roller Furling*Asymmetrical Cruising Spinnaker - Like New *Standing Rigging is Great*Running Rigging is Good to New *2008 AB 9VS Dinghy w 9.9 HP Mercury 4 Stroke*Stainless Steel Dinghy Davits*2015 Bottom Sand Blasted, Repaired, 2 Barrier Coats, 2-1/2 Coats of Bottom Paint*2018 New Bottom Paint Again.

Basic Information

Category: Cruising Sailboat

Model Year: 1995

Year Built: 1995

Country: United States

Dimensions

LOA: 42' 0" (12.80m)

LWL: 36' 0" (10.97m)

Beam: 13' 10" (4.22m)

Max Draft: 4' 9" (1.45m)

Clearance: 58' 7" (17.86m)

MFG Length: 42' 0" (12.80m)

Speed, Capacities and Weight

Cruise Speed: 6 Kts. (7 MPH)

Max Speed: 7 Kts. (8 MPH)

Displacement: 20500 Pounds

Water Capacity: 115 Gallons

Holding Tank: 52 Gallons

Fuel Capacity: 38 Gallons

Accommodations

Total Cabins: 2

Total Berths: 6

Total Heads: 2

Hull and Deck Information

Hull Material: Fiberglass

Engine Information

Engines: 1

Manufacturer: Yanmar

Model: 4JH2E

Engine Type: Inboard

Fuel Type: Diesel

DETAILED INFORMATION

Overview

BROKERS WALK THRU Purchased brand new and commissioned in Michigan in the year 2000. This 42 Catalina was well cared for by the previous owner. The current sellers purchased the boat two years ago, had a lot of updates completed to prepare for extended cruising along the Mayan Coast. They were preparing to do for several years of extended cruising and living aboard. Unfortunately as it sometimes does, life and events change course. The boat was removed from the water in late August 2019 and placed on the hard with all items in working order and ready to set sail. This is going to make an excellent vessel for anyone in this size range and she is water ready, includes many upgrades, and newer items. Not only is she ship shape and water ready, she is competitively priced, as the seller know she needs sold. Over 1,000 42 Catalina's have been built making her the most popular 42 Sailboat ever built. Come get yours. COCKPIT

All Brand New Canvas and Strata Glass - Double Bimini Top, Spray Hood Brand New Cockpit Cushions Helm w Stainless Steel Steering Wheel Cockpit Table w Storage Generator Access Cabin Entry Swim Platform Swim Ladder Double Life Lines HELM ELECTRONICS

Ritchie Compass Garmin 182C GPS Autohelm Digital Speed Trip Data Raymarine Wind Sped Direction Autohelm Digital Depth Raymarine ST60 Graphics Raymarine Auto Pilot Furuno Radar NAVIGATION STATION ELECTRONICS

Raymarine C70 GPS, Chart Plotter, Fish, Depth and Radar Raymarine VHF w Distress Fusion Stereo System Flat Screen Color Television MECHANICAL

Yanmar 4JHIE 50 HP Diesel Engine - Fresh Water Cooled - 1700 Hours Kanzaki KM4A Transmission Fisher Panda 4500 Diesel Generator - Fresh Water Cooled - Sound Shield - 700 Hours Maxwell 800 Anchor Windlass Dripless Shaft Seal (New) Auto-Matic Bilge Pump Manual Bilge Pump SAILS AND RIGGING

In Mast Furling Main Sail - Like New 130 Furling Genoa - Good Asymmetrical Cruising Spinnaker - Like New Brand New Roller Furling Standing Rigging - All Excellent Running Rigging - Good to Brand New 2ea. Lewmar 54 ST Winches 2ea. Lewmar 45 ST Winches 1ea. Lewmar 16 ST Winch ELECTRICAL

30 Amp Shore Power w 2 30' Shore Power Cords 4.5Kw Generator 3ea. 8D Batteries Hot Water Heater INTERIOR ACCOMMODATIONS

2 Cabin Pulman Layout 2ea. Head Compartments w Flushing Toilets, Fresh Water Sinks, and Stand Up Fresh Water Showers Full Galley Large 5 Person Dinette Navigation Station Flat Screen TV w Sea Watch TV Antenna Brand New 16,000 BTU Air Conditioning MASTER STATEROOM

Located Forward Queen Bed w Brand New Memory Foam Mattress - Never Used Small Settee Built In Cabinets and Cedar Lined Hanging Closet Private Head Compartment GUEST STATEROOM

Located Aft and to Starboard (Currently used as storage for all the new canvas etc. it is cluttered for picture and showing purposes) Queen Berth Built In Cabinets and Cedar Lined Hanging Closet GALLEY

Gimbled Oven w 3 Burner Propane Stove Emerson Microwave Double Stainless Steel Sink w Fresh Water Alder Barbour Refrigerator Freezer Large Ice Box 4 Cabinets Large 4 Drawer Pantry DINGHY

2008 AB Hard Bottom Inflatable - 9VS4 Person Cap 2015 9.9 HP Mercury 4 Stroke Dinghy Davits

Exclusions

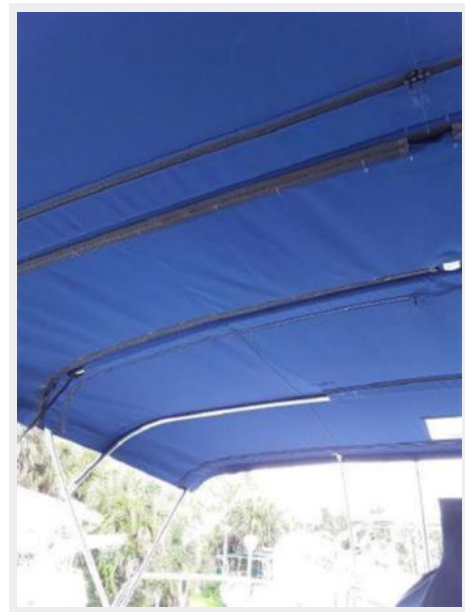
Owner's personal belongings.

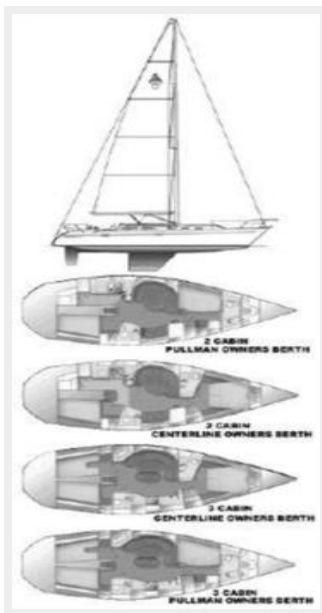
Disclaimer

The Company offers the details of this vessel or yacht in good faith but cannot guarantee or warrant the accuracy of this information nor warrant the condition of the vessel. A buyer should instruct his representatives, agents, or his surveyors, to investigate such details as the buyer desires validated. This vessel or yacht is offered subject to prior sale, price change, or withdrawal without notice.

PHOTOS

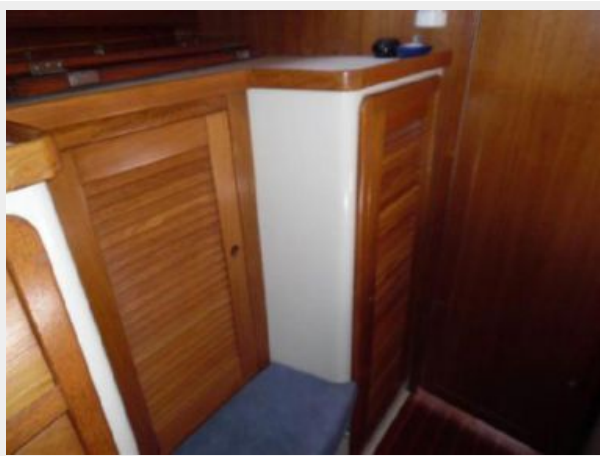






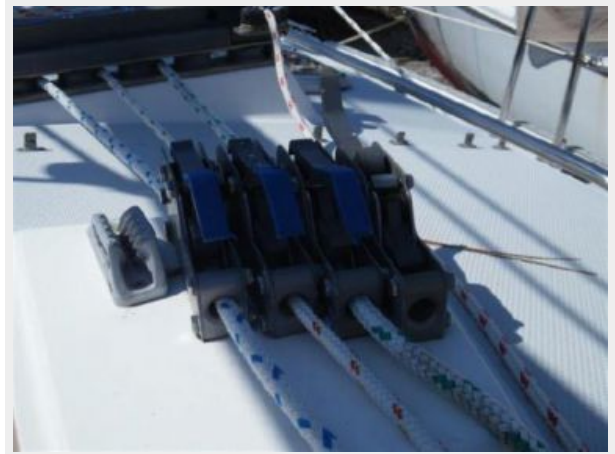




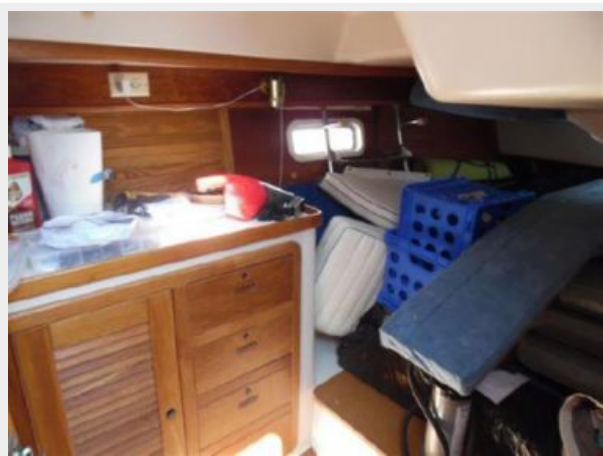






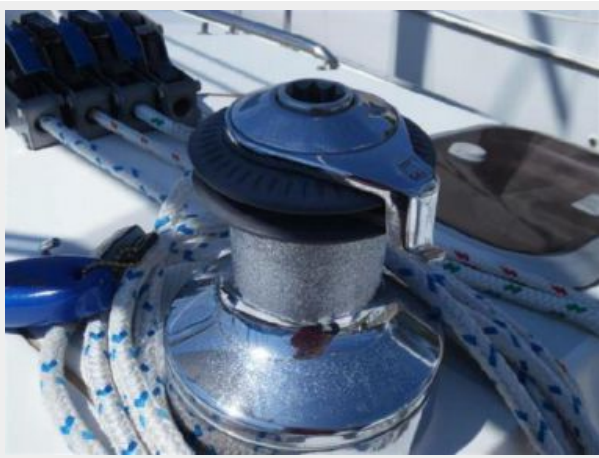














CONTACTS

Andrey Shestakov, leading yacht broker of the sales department of Shestakov Yacht Sales Inc. Shestakov Yacht Sales Inc., the official representative of the Miami/Fort Lauderdale FL headquarters.

Contact details

Email: andrey@shestakovyachtsales.com

Web: shestakovyachtsales.com/en/

Telephones

USA: +1(954)274-4435

Office hours

Monday – Saturday: **9:00 - 21:00** EDT

Sunday: **closed**

Address



Harbour Towne Marina, 850 NE 3rd St,
STE 213, Dania, FL 33004