

LOKU' KADE' — SUNSEEKER



Builder: SUNSEEKER

Year Built: 2008

Model: Motor Yacht

Price: PRICE ON APPLICATION

Location: Italy

LOA: 70' 3" (21.40m)

Beam: 17' 9" (5.40m)

Max Draft: 5' 5" (1.65m)

Cruise Speed: 30 Kts. (35 MPH)

Max Speed: 38 Kts. (44 MPH)

Our experienced yacht broker, Andrey Shestakov, will help you choose and buy a yacht that best suits your needs LOKU' KADE' — SUNSEEKER from our catalogue. Presently, at Shestakov Yacht Sales Inc., we have a wide variety of yachts available on our sale's list. We also work in close contact with all the big yacht manufacturers from all over the world.

If you would like to buy a yacht LOKU' KADE' — SUNSEEKER or would like help answering any questions concerning purchasing, selling or chartering a yacht, please call +1(954)274-4435

TABLE OF CONTENTS

TABLE OF CONTENTS	2
SPECIFICATIONS	4
Overview	4
Basic Information	4
Dimensions	4
Speed, Capacities and Weight	4
Accommodations	5
Hull and Deck Information	5
Engine Information	5
DETAILED INFORMATION	6
Accommodations	6
Navigation Equipment	6
On Board Equipment	6
Exclusions	6
Disclaimer	6
PHOTOS	8
20190524_125106 (FILEminimizer)	8
DSC_8862b (FILEminimizer)	8
20170405_112422 (FILEminimizer)	8
DSC_8883 (FILEminimizer)	8
20190524_123554 (FILEminimizer)	8
20190524_123449 (FILEminimizer)	8
20170405_112324 (FILEminimizer)	9
20190524_123428 (FILEminimizer)	9
20170405_113427 (FILEminimizer)	9
20190524_123332 (FILEminimizer)	9
20170405_114538 (FILEminimizer)	9
20170405_113707 (FILEminimizer)	9

20190524_123722 (FILEminimizer)	10
20170405_114013 (FILEminimizer)	10
20170405_114441 (FILEminimizer)	10
20170405_114532BIS (FILEminimizer)	10
20170405_115052 (FILEminimizer)	11
20170405_114835 (FILEminimizer)	11
20170405_115440 (FILEminimizer)	11
20170405_115406 (FILEminimizer)	11
20170405_115454 (FILEminimizer)	12
CONTACTS	13
Contact details	13
Telephones	13
Office hours	13
Address	13

SPECIFICATIONS

Overview

Predator 72 in very good general condition with crew on board for the whole year, black hull and beige deckhouse, teak cockpit & satin walnut interior with leather sofa & parquet vat paid same owner from the year of built, only private use!!! The hull was built between 2007 and 2008 (2008 model), first registration 2009 - 4 cabins version. 2013/2014: total hull & deckhouse painting 2015/2016: new AGM gel engines batteries and new living room & master cabin smart tv + portable bow sun bed speakers 2016/2017: new seacocks, full teak treatment, service batteries replacement & new outside tapestry 2017/2018: full hull paint stripping, coolant & intercooler + full ordinary service, membranes desalination unit replacement, new lower deck teak floor, generator batteries replacement & new electric oven 2018/2019 new parquet flooring, new cockpit refrigerator, desalination overhauling, new master cabin carpet and tv, new canvas and windlass darkening 2019/2020 new cockpit and swimming platform teak

Basic Information

Category: Motor Yacht

Model Year: 2009

Year Built: 2008

Country: Italy

Vessel Top: Hardtop

Dimensions

LOA: 70' 3" (21.40m)

Beam: 17' 9" (5.40m)

Max Draft: 5' 5" (1.65m)

Speed, Capacities and Weight

Cruise Speed: 30 Kts. (35 MPH)

Cruise Speed Range: 38

Max Speed: 38 Kts. (44 MPH)

Displacement: 97003.39528 Pounds

Gross Tonnage: 41.13 Pounds

Water Capacity: 198.129039 Gallons

Fuel Capacity: 1030.2710028 Gallons

Fuel Consumption: 105.6688208 Gallons

Accommodations

Total Cabins: 4

Sleeps: 8

Hull and Deck Information

Hull Material: Fiberglass

Deck Material: Teak and Fiberglass

Hull Color: BLUE

Hull Finish: Steel

Engine Information

Engines: 2

Manufacturer: MAN

Model: D2842 LE433 - V12

Engine Type: Inboard

Fuel Type: Diesel

DETAILED INFORMATION

Accommodations

4 cabins version + crew

UPPER DECK: separate aft crew cabin with its own facilities – spacious living room with “c” leather sofa, 2 leather chairs, expandable table, 40” Sharp retractable smart tv + Bose sound system + Sky decoder + cd/dvd/mp3 player – helm with leather seats with electrical adjustment (driver only).

LOWER DECK: kitchen area with Bosch ceramic hob, De Longhi combi oven, Miele refrigerator & freezer, Bosch washing machine & washer-dryer - full beam amidships master double stateroom with walk-in wardrobe, private bathroom with box shower + Sharp smart tv + Sky decoder + cd/dvd/mp3 player + safe – vip forward double cabin with private bathroom with box shower, Sharp tv + Sky + cd/mp3 player – starboard twin cabin with Sharp tv + cd/mp3 player + Sky – left twin guest cabin with Pullman bed + Sharp tv + cd/mp3 player – guest bathroom with box shower and twin access.

Navigation Equipment

elettronica navigazione completa Raymarine / Full Raymarine navigation equipment Vhf/Dsc Ray240E Bidata Autohelm St602 monitor multifunzione radar & plotter E120 / 2xE120 multifunction Radar & plotter pilota automatico Autohelm St6002 autopilot with interface Ind. Angolo di barra e flaps / Rudder & flaps ind. level contacatena digitale / digital chain counterdiagnostica motori Man MMDS CLC6.3 / Man MMDS CLC6.3 engine diagnosis

On Board Equipment

Sidepower bow & stern thruster - TVCC system with cockpit & engine room safety camera Besenconi hydraulic gangway & tender lift - tender/jetski hangar with shore power, electric winch twin external shower (bow & stern) – 2xLewmar aft winches cockpit wet bar with Vitrifigo icemaker + Isotherm minibar + electric barbecue cockpit electric retractable awning + extension + aft micropore blind + side awning 21kw Kohler generator (3023h) + Phase Three battery chargers + Mastervolt inverter 150lt/h Idromar desalination unit - Airmarine air condition system with 5 separate units SEATEL tv sat system + Sky decoders - living room Bose system + Kenwood in cockpit – 5 lcd Tv Sanshin HR1012 electric searchlight – underwater led lights full emergency equipment - safe - 3.20 Suzuki tender + 20 hp four stroke

Exclusions

Owner's personal belongings.

Disclaimer

The Company offers the details of this vessel or yacht in good faith but cannot guarantee or warrant the accuracy of this information nor warrant the condition of the vessel. A buyer should instruct his representatives, agents, or his surveyors, to investigate such details as the buyer desires validated. This vessel or yacht is offered subject to prior sale, price change, or withdrawal without notice.

PHOTOS

20190524_125106 (FILEminimizer)



DSC_8862b (FILEminimizer)



DSC_8883 (FILEminimizer)



20170405_112422 (FILEminimizer)



20190524_123554 (FILEminimizer)



20190524_123449 (FILEminimizer)



20170405_112324 (FILEminimizer)



20190524_123428 (FILEminimizer)



20170405_113427 (FILEminimizer)



20190524_123332 (FILEminimizer)



20170405_114538 (FILEminimizer)



20170405_113707 (FILEminimizer)



20190524_123722 (FILEminimizer)



20170405_114013 (FILEminimizer)



20170405_114441 (FILEminimizer)

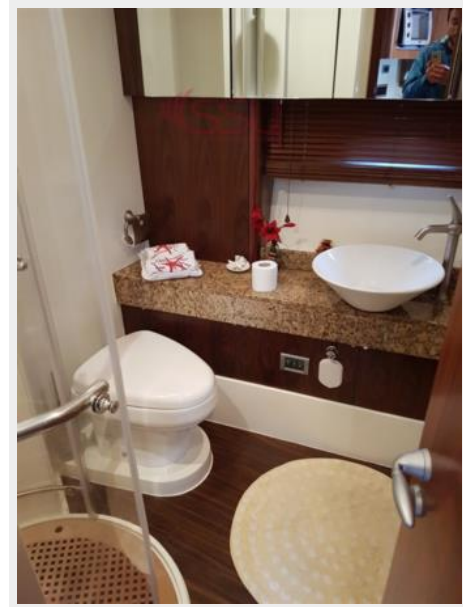


20170405_114532BIS (FILEminimizer)



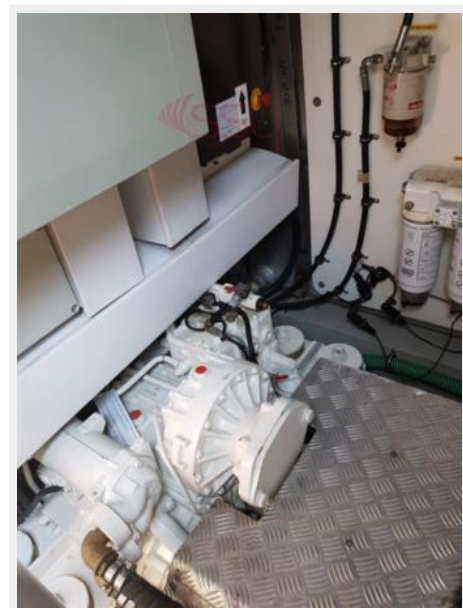
20170405_115052 (FILEminimizer)

20170405_114835 (FILEminimizer)



20170405_115440 (FILEminimizer)

20170405_115406 (FILEminimizer)



20170405_115454 (FILEminimizer)



CONTACTS

Andrey Shestakov, leading yacht broker of the sales department of Shestakov Yacht Sales Inc. Shestakov Yacht Sales Inc., the official representative of the Miami/Fort Lauderdale FL headquarters.

Contact details

Email: andrey@shestakovyachtsales.com

Web: shestakovyachtsales.com/en/

Telephones

USA: +1(954)274-4435

Office hours

Monday – Saturday: **9:00 - 21:00** EDT

Sunday: **closed**

Address



Harbour Towne Marina, 850 NE 3rd St,
STE 213, Dania, FL 33004