

SEA DENT — ENDEAVOUR



Builder: ENDEAVOUR

Year Built: 2006

Model: Catamaran

Price: PRICE ON APPLICATION

Location: United States

LOA: 40' 0" (12.19m)

Beam: 16' 0" (4.88m)

Max Draft: 3' 6" (1.07m)

Cruise Speed: 8 Kts. (9 MPH)

Max Speed: 14 Kts. (16 MPH)

Our experienced yacht broker, Andrey Shestakov, will help you choose and buy a yacht that best suits your needs **Sea Dent — ENDEAVOUR** from our catalogue. Presently, at Shestakov Yacht Sales Inc., we have a wide variety of yachts available on our sale's list. We also work in close contact with all the big yacht manufacturers from all over the world.

If you would like to buy a yacht **Sea Dent — ENDEAVOUR** or would like help answering any questions concerning purchasing, selling or chartering a yacht, please call **+1(954)274-4435**

TABLE OF CONTENTS

TABLE OF CONTENTS	2
SPECIFICATIONS	6
Overview	6
Basic Information	7
Dimensions	7
Speed, Capacities and Weight	7
Accommodations	7
Hull and Deck Information	7
Engine Information	8
DETAILED INFORMATION	9
Specs	9
Electronics Equipment	9
Inside Equipment	9
Electrical Equipment	10
Outside Equipment/Extras	10
Walk Through	10
Interior	11
Electronics	11
Galley	12
Deck	13
Engine Room Systems	14
Mechanical, Electrical, Plumbing	14
Engine Room	15
Exclusions	15
Disclaimer	15
PHOTOS	16
40-2006-Endeavour-Catamaran-Cruiser-04	16
40-2006-Endeavour-Catamaran-Cruiser-01	16

40-2006-Endeavour-Catamaran-Cruiser-08	16
40-2006-Endeavour-Catamaran-Cruiser-03	16
40-2006-Endeavour-Catamaran-Cruiser-09	17
40-2006-Endeavour-Catamaran-Cruiser-16	17
40-2006-Endeavour-Catamaran-Cruiser-14	17
40-2006-Endeavour-Catamaran-Cruiser-10	17
40-2006-Endeavour-Catamaran-Cruiser-18	18
40-2006-Endeavour-Catamaran-Cruiser-30	18
40-2006-Endeavour-Catamaran-Cruiser-12	18
40-2006-Endeavour-Catamaran-Cruiser-36	18
40-2006-Endeavour-Catamaran-Cruiser-40	18
40-2006-Endeavour-Catamaran-Cruiser-20	18
40-2006-Endeavour-Catamaran-Cruiser-38	19
40-2006-Endeavour-Catamaran-Cruiser-42	19
40-2006-Endeavour-Catamaran-Cruiser-44	19
40-2006-Endeavour-Catamaran-Cruiser-22	19
40-2006-Endeavour-Catamaran-Cruiser-24	19
40-2006-Endeavour-Catamaran-Cruiser-48	19
40-2006-Endeavour-Catamaran-Cruiser-50	20
40-2006-Endeavour-Catamaran-Cruiser-06	20
40-2006-Endeavour-Catamaran-Cruiser-52	20
40-2006-Endeavour-Catamaran-Cruiser-26	20
40-2006-Endeavour-Catamaran-Cruiser-54	20
40-2006-Endeavour-Catamaran-Cruiser-56	20
40-2006-Endeavour-Catamaran-Cruiser-58	21
40-2006-Endeavour-Catamaran-Cruiser-62	21
40-2006-Endeavour-Catamaran-Cruiser-64	21
40-2006-Endeavour-Catamaran-Cruiser-28	21
40-2006-Endeavour-Catamaran-Cruiser-32	21

40-2006-Endeavour-Catamaran-Cruiser-66	21
40-2006-Endeavour-Catamaran-Cruiser-78	22
40-2006-Endeavour-Catamaran-Cruiser-68	22
40-2006-Endeavour-Catamaran-Cruiser-74	22
40-2006-Endeavour-Catamaran-Cruiser-34	22
40-2006-Endeavour-Catamaran-Cruiser-76	22
40-2006-Endeavour-Catamaran-Cruiser-46	22
40-2006-Endeavour-Catamaran-Cruiser-60	23
40-2006-Endeavour-Catamaran-Cruiser-33	23
40-2006-Endeavour-Catamaran-Cruiser-47	23
40-2006-Endeavour-Catamaran-Cruiser-25	23
40-2006-Endeavour-Catamaran-Cruiser-51	23
40-2006-Endeavour-Catamaran-Cruiser-31	23
40-2006-Endeavour-Catamaran-Cruiser-11	24
40-2006-Endeavour-Catamaran-Cruiser-35	24
40-2006-Endeavour-Catamaran-Cruiser-17	24
40-2006-Endeavour-Catamaran-Cruiser-05	24
40-2006-Endeavour-Catamaran-Cruiser-70	24
40-2006-Endeavour-Catamaran-Cruiser-13	24
40-2006-Endeavour-Catamaran-Cruiser-27	25
40-2006-Endeavour-Catamaran-Cruiser-72	25
40-2006-Endeavour-Catamaran-Cruiser-23	25
40-2006-Endeavour-Catamaran-Cruiser-41	25
40-2006-Endeavour-Catamaran-Cruiser-43	26
40-2006-Endeavour-Catamaran-Cruiser-53	26
40-2006-Endeavour-Catamaran-Cruiser-15	26
40-2006-Endeavour-Catamaran-Cruiser-37	26
40-2006-Endeavour-Catamaran-Cruiser-79	26
40-2006-Endeavour-Catamaran-Cruiser-39	26

40-2006-Endeavour-Catamaran-Cruiser-69	27
40-2006-Endeavour-Catamaran-Cruiser-45	27
40-2006-Endeavour-Catamaran-Cruiser-49	27
40-2006-Endeavour-Catamaran-Cruiser-67	27
40-2006-Endeavour-Catamaran-Cruiser-71	27
40-2006-Endeavour-Catamaran-Cruiser-59	27
40-2006-Endeavour-Catamaran-Cruiser-07	28
40-2006-Endeavour-Catamaran-Cruiser-29	28
40-2006-Endeavour-Catamaran-Cruiser-19	28
40-2006-Endeavour-Catamaran-Cruiser-55	28
40-2006-Endeavour-Catamaran-Cruiser-65	28
40-2006-Endeavour-Catamaran-Cruiser-21	28
40-2006-Endeavour-Catamaran-Cruiser-57	29
40-2006-Endeavour-Catamaran-Cruiser-61	29
40-2006-Endeavour-Catamaran-Cruiser-63	29
40-2006-Endeavour-Catamaran-Cruiser-75	29
40-2006-Endeavour-Catamaran-Cruiser-73	29
40-2006-Endeavour-Catamaran-Cruiser-77	29
CONTACTS	30
Contact details	30
Telephones	30
Office hours	30
Address	30

SPECIFICATIONS

Overview

Power Trawler Cat ready to go

SEA DENT is totally ready to go gallivanting anywhere there is skinny water, **3'6" draft**. She will cruise owners and guests in complete comfort, safety and luxury. This Endeavour Catamaran is laid out to be enjoyed by 2 couples with her 2 private en-suite staterooms. The well designed sea going galley even has a wine chiller.

There are numerous areas to enjoy while aboard **SEA DENT**: lounging on the foredeck, sunning on the bridge deck, navigating in the pilothouse or just chilling in the aft salon. Powered by twin Yanmar Turbo Charged diesel engines @ 240 hp each, she will get you to your favorite get away spots with reliability as well as fuel economy.

SEA DENT just underwent a major refit in early 2019 in preparation for a two year extended cruise. Unfortunately, a severe shoulder problem has ended this bucket list item. Someone will benefit from the over 40 years of yachting experience that went into this most recent refit.

SEA DENT is perfect for living aboard for several months or even years while cruising the Great Loop, visiting otters in the Trent Severn waterway in Canada, swimming with the dolphins in the Bahamas or just hanging at the dock.

This Trawler Cat has five distinct levels with a unique layout that provides privacy when desired as well as many group gathering sites. There are 2 dining areas, the Main Salon and the Flybridge Aft Deck. Access to the Starboard Engine room is via a deck hatch under the galley counter after a removable island storage cart is rolled out of the way. The Port Engine Room is accessed via a floor hatch aft of the electrical panel. Each engine room has a removable ladder for easy access, plus there is additional engine room access from the Aft Deck/Cockpit to the aft sections of each engine room. Each area has incredibly large (2' x 3' or larger) deep floor hatches that contain mechanical systems and/or dry, clean storage areas that will easily accommodate large Rubbermaid-type storage containers.

BRING BATHING SUITS AND LEAVE YOUR WORRIES BEHIND ON BOARD 'SEA DENT'.

Basic Information

Category: Catamaran

Model Year: 2006

Year Built: 2006

Country: United States

Registration #: 81935-3594522

Dimensions

LOA: 40' 0" (12.19m)

LOD: 40' 0" (12.19m)

Beam: 16' 0" (4.88m)

Max Draft: 3' 6" (1.07m)

Speed, Capacities and Weight

Cruise Speed: 8 Kts. (9 MPH)

Max Speed: 14 Kts. (16 MPH)

Displacement: 19200 Pounds

Water Capacity: 150 Gallons

Holding Tank: 50 Gallons

Fuel Capacity: 600 Gallons

Accommodations

Total Cabins: 4

Total Heads: 2

Hull and Deck Information

Hull Material: Fiberglass

Engine Information

Engines: 2

Manufacturer: Yanmar

Model: 4 LHA STP

Engine Type: Inboard

Fuel Type: Diesel

DETAILED INFORMATION

Specs

- Builder: Endeavour
- Flag of Registry: United States

Electronics Equipment

- CD player
- Radio
- Cockpit speakers
- Autopilot
- Radar
- Compass
- GPS
- Plotter
- Log-speedometer
- TV set
- Depthsounder
- VHF
- Navigation center
- Repeater(s)

Inside Equipment

- Air compressor
- Hot water
- Manual bilge pump
- Washing machine
- Battery charger
- Electric bilge pump
- Air conditioning
- Oven
- Deep freezer
- Electric head
- Fresh water maker
- Microwave oven
- Refrigerator
- Heating

Electrical Equipment

- Generator
- Shore power inlet
- Inverter
- Electrical Circuit: 12V

Outside Equipment/Extras

- Cockpit table
- Solar panel
- Outboard engine brackets
- Cockpit shower
- Tender
- Davits
- Cockpit cushions
- Electric windlass

Walk Through

Sea Dent has an extremely comfortable layout. Fully forward, the master en suite spans across both hulls and features a walk-around queen berth. A walk-around queen berth is a very rare luxury on a power catamaran of this size. The **new (March 2019)** custom mattress was designed to fold which allows access to extensive storage. The master suite also has two night stands and two hanging lockers. With large windows and opening port lights, there is plenty of natural light. A **new (January 2019)** Samsung smart TV and separate AC controls makes this cabin a pleasure to retire to after a wonderful day on the water.

The en-suite head has a voluminous shower stall that also is a step down bath tub. The opening port light provides natural light and ventilation. There is an oval Corian sink with custom Gilbratra countertops finished with a bull nose and also a mirrored medicine cabinet with storage shelves. The fresh water 12 v heads with macerator were serviced in **February 2019**.

The guest en-suite is located in the port hull and it, too, has a new custom hinged mattress (**March 2019**). This queen berth stateroom has three large drawers and a hanging locker for your friends to store their toys. The guest stateroom has been pre-wired for a TV.

Both en-suites have lovely, warm, honey colored teak and holly soles.

- 2 x Full-size separate stand-up fiberglass shower stalls with overboard pump-outs
- Vanity with an oval Corian sink, custom Gilbratra countertops with bull nose
- Storage shelves
- Large mirrored medicine cabinet

- 2 x 12v fresh water marine heads with Macerators

Aft of the staterooms is the very versatile pilothouse. The visibility from the pilothouse is exceptional. Port and starboard pilothouse doors make accessing the exterior deck of **SEA DENT** very easy and the wide walk arounds allow complete ease of movement.

The Flybridge has a molded fiberglass hard top and new Isinglass U-Zip vinyl windows. A full enclosure with a spacious aft deck that features free-standing deck furniture and a folding, multi-leaf Varnished Teak Table that will accommodate 4 or more. The Captain has two very well equipped helm stations with full engine instrumentation and navigation electronics to choose from, depending on the weather and required visibility.

Interior

- Navigation helm station with hydraulic steering
- Adjustable helm seat
- 6" Binnacle compass
- Large dinette folding table
- Chart Storage
- Interior fans
- Custom shades for large salon windows
- Peek-a-boo blinds on 3 opening ports
- Teak cabin-soles
- Interior teak cabinetry
- **NEW (May 2019)** high end custom Washer/dryer.electric recliner
- 2 x 16,000 BTU Cruisair air conditioners, **1 NEW (February 2019)** compressor
- 2 x Large staterooms with queen size berths, hanging lockers and drawer storage

Electronics

- Raymarine E120 12" Chartplotter / Display
- Raymarine Radar
- Raymarine ST6001 Autopilot
- Raymarine depth transducer
- Dual station Horizon VHF and DCS, hailer and fog horn
- **NEW (April 2019)** FUSION stereo with 4 speakers and CD Changer
- **NEW (April 2019)** KVH Sat TV Tracvision 3
- **NEW (April 2019)** AC1200 Wi-Fi Smart Router
- **NEW (January 2019)** EPRIB
- Spectra Watermaker with spares
- **NEW Samsung Smart TV For main saloon**

The dinghy has **NEW (March 2019)** Echomap chart plotter and series 40 Garmin.

Also **NEW (March 2019)** Standard Horizon VHF Radio.

Galley

- (2) 7.5 cubic ft. front loading side by side refrigerator/freezer
- 3 burner propane stove
- Double polished stainless steel sink
- Single control faucet with spray nozzle
- Custom Gibraltar countertops with bull nose edge
- Galley storage lockers and pantry
- Stainless Steel Microwave/convection oven
- Sea Gull water purification system and spare filters serviced (**January 2019**)
- 12 volt Tundra freezer
- Central vacuum
- **NEW** (January 2019) Liberty safe 350 Smart Vault
- 2 Cold front ice makers

The main saloon and galley are located down 3 steps from the pilothouse.

There is a L shaped settee located to port with an high/low teak table.

A custom ordered electric recliner is located to starboard.

The backside of the aft galley counter has a fold up large table.

The whole area is extremely bright and cheery. The visibility is outstanding.

Crossing through the main saloon, one exits to the aft deck Cockpit. Great spot for water sports.

Dual molded in fiberglass entry stairs makes it very easy to enter and return from the water.

A set of Stainless Steel Davits (**12 v.serviced April 2019**) supports:

- 12' Custom Endeavour built dinghy- **NEW (May 2019)** w/Yamaha 25 hp. Electric start outboard (12 hrs)
- 5 ft beam
- Fiberglass
- It has a console with steering and controls
- **New Bimini**
- Bow and stern Nav lights
- 2 paddles
- 2 fold down seats with back rests

- 4 **NEW (January 2019)** West Marine lifevests

Deck

- Molded non-skid on all deck surfaces
- Stainless steel railings with double lifelines
- Molded OVC rub rail
- Hull, deck and structural bulkheads manufactured of biaxial Fiberglass with isophalic vinylester resins
- Uniglass for critical reinforcement
- Hull to deck fastened chemically and mechanically
- Bow corner rail seats
- Dual gates at stern
- 12 volt control panel at helm
- Aluminum and glass companionway doors
- 4 Stainless Steel opening ports with screens
- 4 Stainless Steel opening hatches with screens
- Stainless steel anchor roller and cleats
- Stainless steel bow, stern and amidship cleats
- Self-draining foredeck storage lockers
- Safety pack (Fire X, flair kit, PDFs, air horn, first aid kit, Lifesling, ships bell and whistle
- Flood light for aft deck
- Windshield wipers and washers
- Dutch doors at pilot house
- (2) Large lazarettes in aft deck with a **NEWLY TUNED SET OF PROPELLERS**
- Foredeck bench seat cushions
- Bow seat cushions
- Searchlight
- 12 volt Anchorlift, w/reversing option and chain locker, w/remote
- Ample deck storage lockers
- Stainless steel, side-boarding ladder
- Dock pack (6 lines and 2 finders)
- Ground tackle (55# anchor, 200 ft HR 5/16 chain, stainless steel anchor swivel
- Bridle
- **NEW (February 2019)** 2 teak deck chairs that fold up, 2 teak steamer lounges, and 2 teak tables
- Custom cushions for all teak chairs **NEW (February 2019)**
- 2 Underwater lights aft
- **NEW ISINGLASS (January 2019)**
- **Yeti** cooler mounted on bridge deck
- Factory installed custom hard top
- Side boarding gates
- **New (January 2019)** Windshield
- Upper Helm under seat storage locker

- (5) Stern storage lockers & (2) stern lazarets
- (2) Swim platforms & (2) side boarding mounts w/ SS boarding

Engine Room Systems

- (3) Reverso Electric oil change pumps, 1 for each engine & 1 for generator
- Reverso & Racor fuel polishing / tank transfer system
- Additional house battery
- (2) Fire suppression systems in engine compartments
- Exhaust High-Temp Warning System on each engine
- Lights in each engine room
- Hot water tank by-pass
- Generator spare parts kit
- Hydraulic Steering
- Access Hatches to Front & Rear of each engine room

Mechanical, Electrical, Plumbing

- 6kw Northern Lights Gen Set
- (2) Stern lights under the hull
- Remote shut off for propane
- 20 lb. Propane bottle in separate vented locker
- Navigational and anchor lights
- 40 amp smart battery charger
- 12 volt hot & cold water pressure system
- Premier Plus A/C - DC electrical panel
 - (2) 80 amp alternators
 - Engine battery parallel switch
 - Battery disconnect switch
 - Racor fuel filters w/ water separators
- 110 volts shore power system
- Xantrex charging system for the Solar Panels
- 2 **NEW (January 2019)** 30 amp power cords
- (2) 210 amp house system Lifeline marine batteries
- (2) Holding tanks (50 gal. & 30 gal.) each with level indicators
- 8 gph. Spectrum Water maker. **Serviced January 2019**
- Deck mounted fuel and water fills and holding tank pump-out access
- 11 gal. Water heater-engine exchange/110 volts
- 12 volt interior lightning. (2) 12 volt automatic bilge pumps
- Fresh water wash down at bow & stern
- Non-corrosive, fiberglass reinforced Marelon through hulls and seacocks
- (2) 12 volt macerators for holding tank pump-out

- 3000 Watt inverter with transfer switch
- AM/FM Stereo with 4 speakers and cockpit remote
- CD changer
- Dockside fresh water regulator
- Hot and cold deck shower

Engine Room

- Twin 240 hp Yanmar turbo diesel engines
- Deluxe engine instrument panels
- Dripless shaft seals
- 1 1/2" Stainless Steel shafts
- (4) four blade bronze propellers (2 are spares) Balanced and Proscan (**March 2019**)
- Bronze rudders with strong rudder bearings
- Hydraulic steering serviced (**May 2019**)
- (2) 60 amp alternators
- Engine battery parallel switch
- Battery disconnect switches
- Fuel filters with water separators
- (3) electric oil change pumps
- (2) 90 amp engine cranking Life Marine batteries
- Up to date maintenance on fluids and cooling system
- **ALL manuals**

Exclusions

Owner's personal belongings.

Disclaimer

The Company offers the details of this vessel or yacht in good faith but cannot guarantee or warrant the accuracy of this information nor warrant the condition of the vessel. A buyer should instruct his representatives, agents, or his surveyors, to investigate such details as the buyer desires validated. This vessel or yacht is offered subject to prior sale, price change, or withdrawal without notice.

PHOTOS

40-2006-Endeavour-Catamaran-Cruiser-01



40-2006-Endeavour-Catamaran-Cruiser-04



40-2006-Endeavour-Catamaran-Cruiser-08

40-2006-Endeavour-Catamaran-Cruiser-03



40-2006-Endeavour-Catamaran-Cruiser-09



40-2006-Endeavour-Catamaran-Cruiser-16



40-2006-Endeavour-Catamaran-Cruiser-14

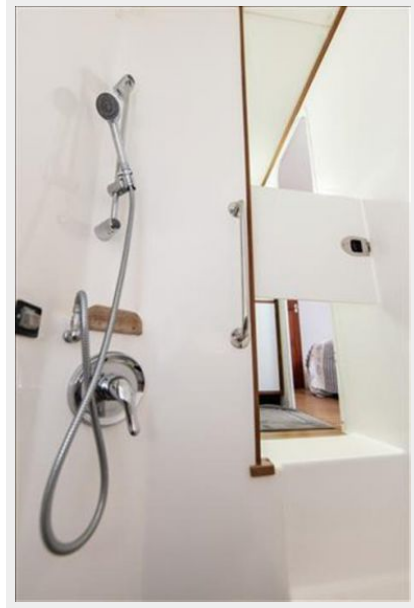


40-2006-Endeavour-Catamaran-Cruiser-10



40-2006-Endeavour-Catamaran-Cruiser-18

40-2006-Endeavour-Catamaran-Cruiser-30



40-2006-Endeavour-Catamaran-Cruiser-12

40-2006-Endeavour-Catamaran-Cruiser-36



40-2006-Endeavour-Catamaran-Cruiser-40

40-2006-Endeavour-Catamaran-Cruiser-20



40-2006-Endeavour-Catamaran-Cruiser-38



40-2006-Endeavour-Catamaran-Cruiser-42



40-2006-Endeavour-Catamaran-Cruiser-22



40-2006-Endeavour-Catamaran-Cruiser-44



40-2006-Endeavour-Catamaran-Cruiser-24



40-2006-Endeavour-Catamaran-Cruiser-48



40-2006-Endeavour-Catamaran-Cruiser-06



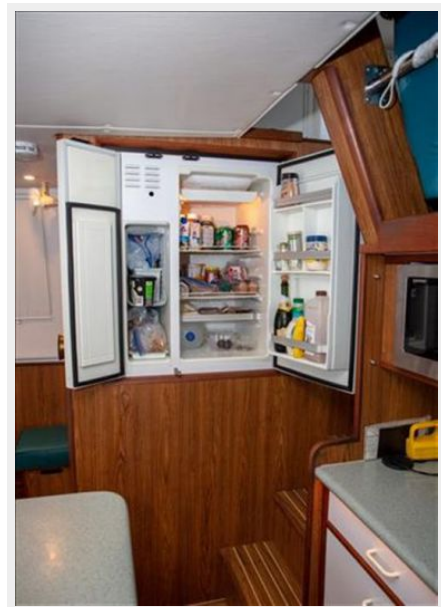
40-2006-Endeavour-Catamaran-Cruiser-50



40-2006-Endeavour-Catamaran-Cruiser-26



40-2006-Endeavour-Catamaran-Cruiser-52



40-2006-Endeavour-Catamaran-Cruiser-56



40-2006-Endeavour-Catamaran-Cruiser-54



40-2006-Endeavour-Catamaran-Cruiser-62



40-2006-Endeavour-Catamaran-Cruiser-58



40-2006-Endeavour-Catamaran-Cruiser-64



40-2006-Endeavour-Catamaran-Cruiser-28



40-2006-Endeavour-Catamaran-Cruiser-32



40-2006-Endeavour-Catamaran-Cruiser-66



40-2006-Endeavour-Catamaran-Cruiser-68



40-2006-Endeavour-Catamaran-Cruiser-78



40-2006-Endeavour-Catamaran-Cruiser-74



40-2006-Endeavour-Catamaran-Cruiser-34



40-2006-Endeavour-Catamaran-Cruiser-76



40-2006-Endeavour-Catamaran-Cruiser-46



40-2006-Endeavour-Catamaran-Cruiser-60



40-2006-Endeavour-Catamaran-Cruiser-33



40-2006-Endeavour-Catamaran-Cruiser-47



40-2006-Endeavour-Catamaran-Cruiser-25



40-2006-Endeavour-Catamaran-Cruiser-31



40-2006-Endeavour-Catamaran-Cruiser-51



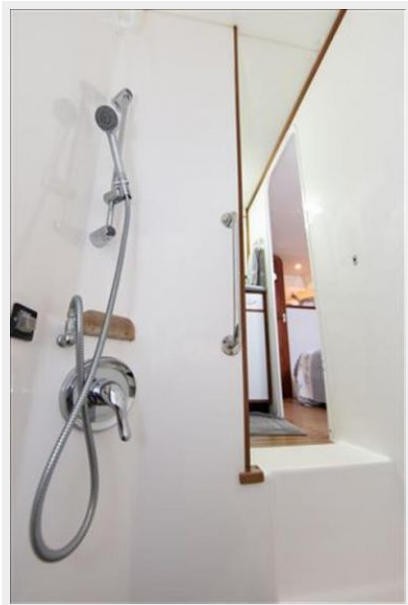
40-2006-Endeavour-Catamaran-Cruiser-35



40-2006-Endeavour-Catamaran-Cruiser-11



40-2006-Endeavour-Catamaran-Cruiser-17



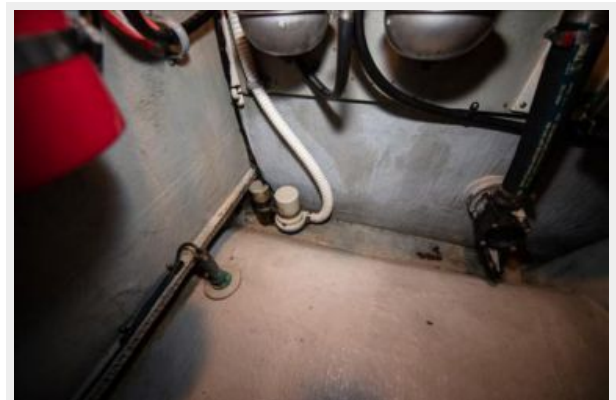
40-2006-Endeavour-Catamaran-Cruiser-05



40-2006-Endeavour-Catamaran-Cruiser-13



40-2006-Endeavour-Catamaran-Cruiser-70



40-2006-Endeavour-Catamaran-Cruiser-27



40-2006-Endeavour-Catamaran-Cruiser-72



40-2006-Endeavour-Catamaran-Cruiser-23

40-2006-Endeavour-Catamaran-Cruiser-41



40-2006-Endeavour-Catamaran-Cruiser-43

40-2006-Endeavour-Catamaran-Cruiser-53



40-2006-Endeavour-Catamaran-Cruiser-15

40-2006-Endeavour-Catamaran-Cruiser-37



40-2006-Endeavour-Catamaran-Cruiser-79

40-2006-Endeavour-Catamaran-Cruiser-39



40-2006-Endeavour-Catamaran-Cruiser-69



40-2006-Endeavour-Catamaran-Cruiser-45



40-2006-Endeavour-Catamaran-Cruiser-67



40-2006-Endeavour-Catamaran-Cruiser-49



40-2006-Endeavour-Catamaran-Cruiser-71



40-2006-Endeavour-Catamaran-Cruiser-59



40-2006-Endeavour-Catamaran-Cruiser-07



40-2006-Endeavour-Catamaran-Cruiser-29



40-2006-Endeavour-Catamaran-Cruiser-19



40-2006-Endeavour-Catamaran-Cruiser-55



40-2006-Endeavour-Catamaran-Cruiser-21



40-2006-Endeavour-Catamaran-Cruiser-65



40-2006-Endeavour-Catamaran-Cruiser-57



40-2006-Endeavour-Catamaran-Cruiser-61



40-2006-Endeavour-Catamaran-Cruiser-63



40-2006-Endeavour-Catamaran-Cruiser-75



40-2006-Endeavour-Catamaran-Cruiser-77



40-2006-Endeavour-Catamaran-Cruiser-73



CONTACTS

Andrey Shestakov, leading yacht broker of the sales department of Shestakov Yacht Sales Inc. Shestakov Yacht Sales Inc., the official representative of the Miami/Fort Lauderdale FL headquarters.

Contact details

Email: andrey@shestakovyachtsales.com

Web: shestakovyachtsales.com/en/

Telephones

USA: +1(954)274-4435

Office hours

Monday – Saturday: **9:00 - 21:00** EDT

Sunday: **closed**

Address



Harbour Towne Marina, 850 NE 3rd St,
STE 213, Dania, FL 33004