

CHIPS AHOY — PRINCESS YACHTS



Судостроитель: PRINCESS YACHTS

Год постройки: 2015

Модель: Крейсер

Цена: ЦЕНА ЯХТЫ ПО ЗАПРОСУ

Местонахождение: United States

Длина общая: 54' 6" (16.61m)

Ширина: 14' 7" (4.44m)

Макс. осадка: 3' 9" (1.14m)

Купить CHIPS AHOY — PRINCESS YACHTS а также выбрать подходящую вам яхту из нашего каталога яхт вам поможет опытный яхтенный брокер Андрей Шестаков. На сегодняшний день компания Shestakov Yacht Sales Inc. имеет большое количество яхт в собственном списке продаж, а также тесно сотрудничает со всеми крупными яхтенными производителями по всему миру.

Для того чтобы купить яхту CHIPS AHOY — PRINCESS YACHTS а также проконсультироваться по любому вопросу связанному с покупкой, продажей, чартером яхт позвоните по телефону **+7(918)465-66-44**.

ОГЛАВЛЕНИЕ

ОГЛАВЛЕНИЕ	2
ХАРАКТЕРИСТИКИ	6
Обзор	6
Основная информация	6
Размеры	6
Скорость, вместимость и масса	6
Размещение	6
Корпус и палуба	7
Информация о двигателе	7
ПОДРОБНОЕ ОПИСАНИЕ	8
2015 PRINCESS V52 SPECS	8
Исключения	11
Отказ от ответственности	11
ФОТОГРАФИИ	12
52 Princess	12
52 Princess	12
52 Princess	12
52 Princess	12
52 Princess	12
52 Princess	12
52 Princess	13
52 Princess	13
52 Princess	13
52 Princess	13
52 Princess	13
52 Princess	13
52 Princess	13
52 Princess	13
52 Princess	13

52 Princess	14
52 Princess	14
52 Princess	14
52 Princess	14
52 Princess	14
52 Princess	14
52 Princess	15
52 Princess	15
52 Princess	15
52 Princess	15
52 Princess	15
52 Princess	15
52 Princess	15
52 Princess	16
52 Princess	16
52 Princess	16
52 Princess	16
52 Princess	16
52 Princess	16
52 Princess	16
52 Princess	17
52 Princess	17
52 Princess	17
52 Princess	17
52 Princess	17
52 Princess	17
52 Princess	17
52 Princess	17
52 Princess	18
52 Princess	18
52 Princess	18
52 Princess	18
52 Princess	18

52 Princess	18
52 Princess	19
52 Princess	19
52 Princess	19
52 Princess	19
52 Princess	20
52 Princess	20
52 Princess	20
52 Princess	20
52 Princess	20
52 Princess	20
52 Princess	20
52 Princess	21
52 Princess	21
52 Princess	21
52 Princess	21
52 Princess	21
52 Princess	21
52 Princess	21
52 Princess	21
52 Princess	21
52 Princess	21
52 Princess	21
52 Princess	22
52 Princess	22
52 Princess	22
52 Princess	22
52 Princess	22
52 Princess	22
52 Princess	22
52 Princess	22
52 Princess	22
52 Princess	23
52 Princess	23
52 Princess	23
52 Princess	23
52 Princess	23
52 Princess	23
52 Princess	23

52 Princess	24
КОНТАКТЫ	25
Контактная информация	25
Телефоны	25
Время работы	25
Адрес	25

ХАРАКТЕРИСТИКИ

Обзор

This 2015 V52 Princess features the 2 Stateroom / 2 Head layout. Her twin Caterpillars C-12 Engines have under 540 original hours.

Some of her notable and Key features are listed below.-2nd Owner Boat (originally freshwater).-Yacht Controller.-Garmin Electronics.-Recent Bottom Paint and Shipyard Period.-Engine Services & Generator (C-12 Motors & Engine room detail)-Monthly maintenance program.-Open checkbook routine.

Основная информация

Тип судна: Крейсер

Модельный год: 2015

Год постройки: 2015

Страна: United States

Размеры

Длина общая: 54' 6" (16.61m)

Ширина: 14' 7" (4.44m)

Макс. осадка: 3' 9" (1.14m)

Скорость, вместимость и масса

Водоизмещение: 44100 Pounds

Вместимость воды: 80 Gallons

Вместимость сточного бака: 30 Gallons

Объем топливного бака: 440 Gallons

Размещение

Всего кают: 2

Всего ком. состава: 2

Корпус и палуба

Материал корпуса: Fiberglass

Информация о двигателе

Двигатели: 2

Производитель: Caterpillar

Модель: C12

Тип двигателя: Inboard

Тип топлива: Diesel

ПОДРОБНОЕ ОПИСАНИЕ

2015 PRINCESS V52 SPECS

Measurements

LOA: 54 ft 6 in Beam: 14 ft 7 in Max Draft: 3 ft 9 in Fuel Tanks Capacity: 440 gal Fresh Water Tanks Capacity: 104 gal

Holding Tank Capacity: 35 gal

Number of Cabins: 2

Number of Heads: 2

Propulsion

Engine #1 Engine Make: CATERPILLAR - **SERVICED 2019** Engine Model: C-12

STB- Hours: 544 Power: 715 hp

Engine #2 Engine Make: CATERPILLAR - **SERVICED 2019** Engine Model: C-12

PORT- Hours: 542 Power: 715 hp

Upper Salon

Satin Walnut finishes Triple opening stainless-steel framed sliding doors to cockpit with optional screen. U-shaped ultra leather sofa and dining table with convertible filler cushions for bed.

Harmon-Kardon entertainment system DVD/MP3 with salon speakers Electric pop up LED TV to STB. Electric opening sun roof/cemake Refrigerator Storage locker

Built in Bar with Princess glasses and China included.

Opening window to port

Lower Salon

Satin walnut finishes L-shaped ultra leather sofa 24v and 220/240v electrical control panels Storage lockers Fusion Stereo/DVD player

Galley

3-zone ceramic cooktop (Port Side) Combination microwave/conventional oven Stainless-steel sink with monobloc mixer tap Full size refrigerator and separate freezer and Waste bin. Storage cupboards, drawers and lockers

Master Stateroom

Large double bed with drawers below LED TVWardrobe with shelvesFusion Stereo/DVD player

Storage lockers and drawers & overhead storage.

Overhead and individual berth lights in En suite bathroom with teak flooring throughout.

Forward Stateroom

Single scissors beds which converts to double bed when needed.

LED TVFusion Stereo/DVD playerWardrobe with storage.

Storage lockersDeck hatch with integrated skylight and blind.

Overhead and individual berth lightsEn- suite bathroom with teak flooring and day access.

Additional Information and Photos

Twin helm bolster seats- Black Yacht ControllerElectric opening windowBow & Stern thruster – variable speed Garmin 8212 GPS/Radar/Depth Garmin Autopilot

Garmin RadarCAT Electronic displays- (Fuel Burn, Oil Pressure, load and all engine info)Controls for windscreen wipers, bilge pump, anchor winch and trim tabs (with indicator)Full engine instrumentation including fuel gauges, engine controls and rudder position indicator.

Remote control search light at helm.

Deck

Teak-laid transom platform- **2019 Teak cleaned and sealed.**

Cockpit deck and stairs to side decks

Electric anchor windlass with foredeck and helm position controls.

Stainless-steel cleats, fairleads and handrails

Remote control searchlight

Glendinning cablemaster- 50 AMP

Cockpit

U-shaped seating with folding high gloss teak table (Port Side)

Transom hatch to stern lazarette

Transom gate leading to hydraulic platform- Stb Side

Foldaway swimming ladder and hot and cold shower- Stb side.

Wetbar including sink, refrigerated drink box, storage and barbecue- STB side.

Fusion Stereo Remote- Port Side

Lockable gas strut assisted hatch to engine room

Liferaft storage locker

Cockpit covers for exterior cushions.

Electrical

24 Volt

4 x heavy-duty batteries for engine starting 4 x heavy-duty auxiliary batteries 60 amp battery charger charging both banks of batteries via automatic switch charging system

LED lighting throughout

110/220 Volt

Additional Information and Photos

13.5kW - Cummins ONAN- Diesel Generator with sound shield.

Shore support inlet in cockpit locker with storage for cable.

Polarity check system.

Engine

(2) CAT C-12 – 490 hours- Recent Service completed 2019

New After Coolers for C-12 CATS- 2019

Exclusions

Glass table Artwork & Personal Items.

****FUEL BURN PER MOTOR & SPEEDS- 9/18/2019- STUART FLORIDA WITH ROUGHLY 1/2 TANK OF FUEL PLEASE TAKE THIS NUMBERS AS A ROUGH ESTIMATE****

925 RPM - 8.75 KNOTS = 5 GALLONS HR

1000 RPM - 9/10 KNOTS = 7 GALLONS HR

1250 RPM- 11.5 KNOTS = 12 GALLONS HR

1400 RPM- 13.5 KNOTS = 16 GALLONS HR

1520 RPM - 18.2 KNOTS = 16 GALLONS HR

1650 RPM - 21.5 KNOTS = 19 GALLONS HR

1750 RPM - 24 KNOTS = 20 GALLONS HR

1850 RPM - 26 KNOTS = 23 GALLONS HR

1950 RPM - 28.5 KNOTS = 23 GALLONS HR

2190 RPM- 31 KNOTS = 29 GALLONS HR

2350 RPM - 35 KNOTS = 34 GALLONS HR

2365 RPM - 36 KNOTS = 34 GALLONS HR

Disclaimer

The Company offers the details of this vessel in good faith but cannot guarantee or warrant the accuracy of this information nor warrant the condition of the vessel. A buyer should instruct his agents, or his surveyors, to investigate such details as the buyer desires validated. This vessel is offered subject to prior sale, price change, or withdrawal without notice.

Исключения

При продаже яхты исключаются личные вещи владельца.

Отказ от ответственности

Компания предоставляет описание судна или яхты добросовестно, но не может гарантировать точность этой информации, а также не ручается за техническое состояние. Покупатель должен проинструктировать своих агентов или оценщиков исследовать представленную информацию более подробно, по собственному желанию. Продажа судна или яхты, изменение цены или снятие с продажи будет происходить без предварительного уведомления.

ФОТОГРАФИИ

52 Princess



52 Princess



52 Princess



52 Princess



52 Princess



52 Princess



52 Princess



52 Princess



52 Princess



52 Princess



52 Princess



52 Princess



52 Princess



52 Princess



52 Princess



52 Princess



52 Princess



52 Princess



52 Princess



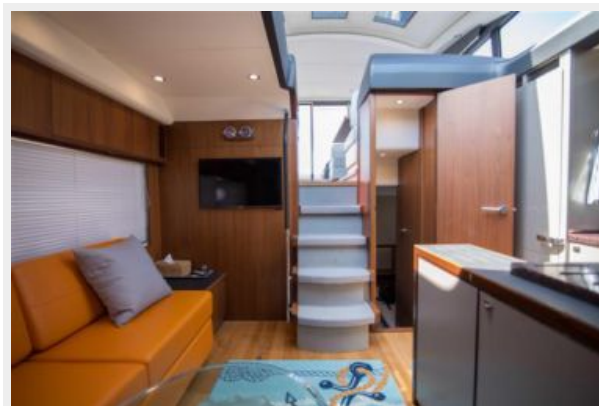
52 Princess



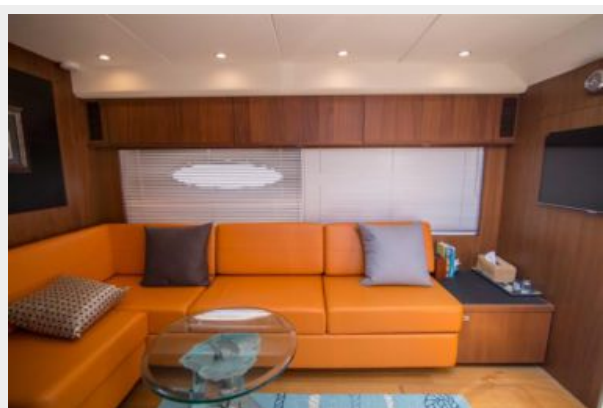
52 Princess



52 Princess



52 Princess



52 Princess



52 Princess



52 Princess



52 Princess



52 Princess



52 Princess



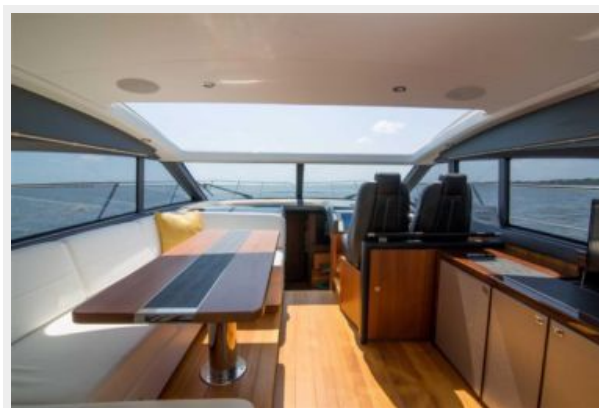
52 Princess



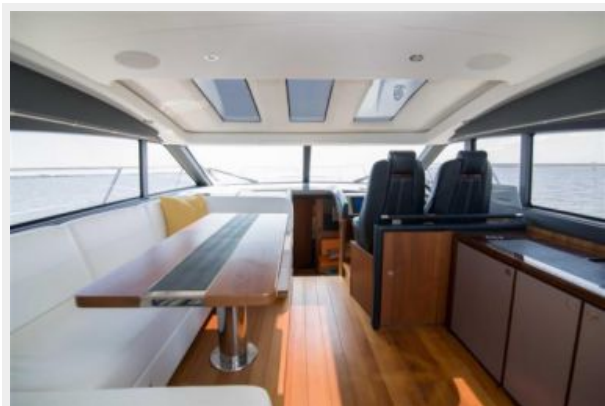
52 Princess



52 Princess



52 Princess



52 Princess



52 Princess



52 Princess



52 Princess



52 Princess



52 Princess



52 Princess



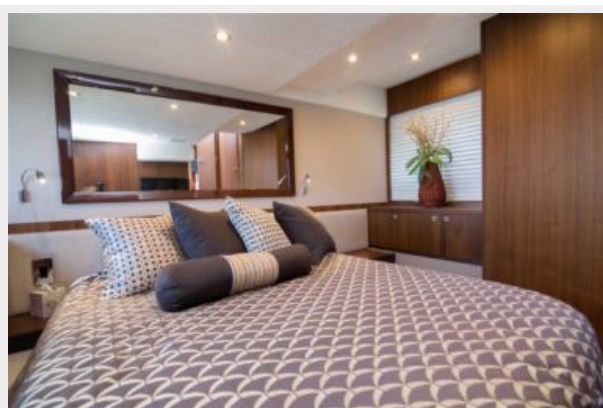
52 Princess



52 Princess



52 Princess



52 Princess



52 Princess



52 Princess



52 Princess



52 Princess



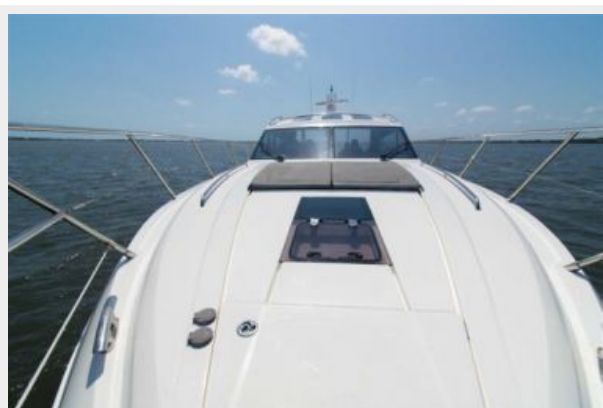
52 Princess



52 Princess



52 Princess



52 Princess



52 Princess



52 Princess



52 Princess



52 Princess



52 Princess



52 Princess



52 Princess



52 Princess



52 Princess



52 Princess



52 Princess



52 Princess



52 Princess



52 Princess



52 Princess



52 Princess



52 Princess



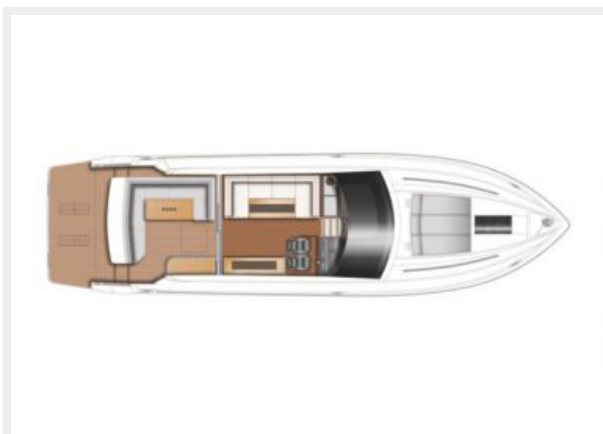
52 Princess



52 Princess



52 Princess



52 Princess



КОНТАКТЫ

Андрей Шестаков (Andrey Shestakov) – ведущий яхтенный брокер отдела продаж яхт и судов компании Shestakov Yacht Sales Inc. Официальный представитель Shestakov Yacht Sales Inc. для русскоговорящих клиентов в центральном офисе компании в Майами/Форт Лодердейл/Флорида/США.

Контактная информация

Email: andrey@shestakovyachtsales.com

Web: shestakovyachtsales.com

Телефоны

Краснодарский край: **+7(918)465-66-44**

США, Майами, Флорида: **+1(954)274-4435**

Время работы

Понедельник – Суббота: **9:00 - 21:00**
EDT

Воскресенье: **Закрето**

Адрес



Harbour Towne Marina, 850 NE 3rd St,
STE 213, Dania, FL 33004