

# 51FT 2007 BERTRAM 510 CONVERTIBLE — BERTRAM



**Builder:** BERTRAM

**Year Built:** 2007

**Model:** Motor Yacht

**Price:** PRICE ON APPLICATION

**Location:** United States

**LOA:** 51' 0" (15.54m)

**Beam:** 16' 2" (4.93m)

**Cruise Speed:** 30 Kts. (35 MPH)

**Max Speed:** 38 Kts. (44 MPH)

Our experienced yacht broker, Andrey Shestakov, will help you choose and buy a yacht that best suits your needs 51ft 2007 Bertram 510 Convertible — BERTRAM from our catalogue. Presently, at Shestakov Yacht Sales Inc., we have a wide variety of yachts available on our sale's list. We also work in close contact with all the big yacht manufacturers from all over the world.

If you would like to buy a yacht 51ft 2007 Bertram 510 Convertible — BERTRAM or would like help answering any questions concerning purchasing, selling or chartering a yacht, please call **+1(954)274-4435**

# TABLE OF CONTENTS

TABLE OF CONTENTS	2
SPECIFICATIONS	5
Overview	5
Basic Information	5
Dimensions	5
Speed, Capacities and Weight	5
Accommodations	5
Hull and Deck Information	6
Engine Information	6
DETAILED INFORMATION	7
Master Stateroom	7
Guest Stateroom	7
Vip Guest Stateroom	7
Galley	7
Salon	8
Flybridge	8
Fishing Features	8
Electronics/ Equipment	9
Other Updates/ Upgrades	9
Exclusions	9
Disclaimer	10
PHOTOS	11
Bertram 510 Convertible	11
Bertram 510 Convertible	11
Bertram 510 Convertible	11
Bertram 510 Convertible	11
Bertram 510 Convertible	12
Bertram 510 Convertible	12

---

Bertram 510 Convertible	12
Bertram 510 Convertible	12
Bertram 510 Convertible	13
Bertram 510 Convertible	13
Bertram 510 Convertible	13
Bertram 510 Convertible	13
Bertram 510 Convertible	13
Bertram 510 Convertible	13
Bertram 510 Convertible	14
Bertram 510 Convertible	14
Bertram 510 Convertible	14
Bertram 510 Convertible	14
Bertram 510 Convertible	14
Bertram 510 Convertible	15
Bertram 510 Convertible	15
Bertram 510 Convertible	15
Bertram 510 Convertible	15
Bertram 510 Convertible	16
Bertram 510 Convertible	16
Bertram 510 Convertible	16
Bertram 510 Convertible	16
Bertram 510 Convertible	16
Bertram 510 Convertible	17
Bertram 510 Convertible	17
Bertram 510 Convertible	17
Bertram 510 Convertible	17
Bertram 510 Convertible	17
Bertram 510 Convertible	17
Bertram 510 Convertible	18
CONTACTS	19
Contact details	19

---

---

Telephones	19
Office hours	19
Address	19

---

# SPECIFICATIONS

---

## Overview

---

Whether it's going to the canyons or shooting over to the Bahamas this 2007 51 Bertram is every sport-fisherman's dream. This boat combines speed, fishing features, and luxury all in one. With it's upgraded 1360 common rail MANS with 2500 hours, this boat cruise's at 30 knots and tops out around 38 knots. The seller is the 2nd owner who has owned it 95% of it's life and has kept flawless records of all services and upgrades. Some of the upgrades include new Simrad Evo plotters, water maker, ice chipper, granite counter tops, and not to mention the 2 gyro stabilizers. The boat is turn key and located in West Palm Beach. Easy to see, call for more info!

## Basic Information

---

**Category:** Motor Yacht

**Sub Category:** Convertible

**Model Year:** 2007

**Year Built:** 2007

**Country:** United States

## Dimensions

---

**LOA:** 51' 0" (15.54m)

**Beam:** 16' 2" (4.93m)

## Speed, Capacities and Weight

---

**Cruise Speed:** 30 Kts. (35 MPH)

**Max Speed:** 38 Kts. (44 MPH)

**Water Capacity:** 185 Gallons

**Fuel Capacity:** 1100 Gallons

## Accommodations

---

**Total Cabins:** 3

**Total Heads:** 3

---

## Hull and Deck Information

---

**Hull Material:** Fiberglass

---

## Engine Information

---

**Engines:** 2

**Manufacturer:** MAN

**Model:** Common Rail

---

# DETAILED INFORMATION

---

## Master Stateroom

---

- Queen size berth with drawers underneath
- Cedar lined hanging locker
- LCD TV 15"
- CD/DVD
- Air conditioning control
- Foam mattress
- Mirrored aft bulkhead
- Attached head
- Alarm clock

## Guest Stateroom

---

- Berths, twin / side by side, with drawers storage beneath
- Cedar lined hanging locker
- Hull side storage lockers
- LCD TV 15"
- CD/DVD
- Air conditioning control
- Foam mattress
- Nightstands
- Private access to shared head
- Alarm clock

## Vip Guest Stateroom

---

- Queen size berth with drawers underneath
- Cedar lined hanging locker
- Hull side storage lockers
- LCD TV 15"
- CD/DVD
- Air conditioning control
- Foam mattress
- Private access to shared head
- Alarm clock

## Galley

---

- Upgraded Granite
- Two below countertop Sub-Zero fridge/freezers
- Three burner glass cooktop
- Microwave
- Dinette, U shaped with granite table top
- Amtico flooring, Teak & Holly
- Storage cabinets with pullout drawers

---

## Salon

---

- Upgraded leather L shape sofa
- Central vacuum
- Dry Bar with bottle storage
- Ice maker
- Wood blinds
- Overhead grab rail
- Upgraded Salon TV
- Bose System

---

## Flybridge

---

- Pipe Welders half tower
- Recessed LED Lights
- Two Release Teak helm chairs with polished SS
- Electric side mount controls
- Power actuated electronics council
- U shape seating

---

## Fishing Features

---

- 168 Square foot cockpit
- Fighting chair
- Rupp outriggers 32'
- Cockpit freezer Port side Well
- Baitwell Starboard well
- Bait prep station with fresh & salt water
- Tackle drawers
- Cockpit coaming padding
- Eskimo ice maker/ chipper for transom fishbox
- Fishbox with macerator
- Deep Sea Lights: Thru Hull Stainless Steel



- Transom door & gate
- Under gunwale storage for gaff
- Removable cockpit sunshade
- 14 rod holders

---

## Electronics/ Equipment

---

- Garmin 7215 GPS Chart plotter (2017)
- (2) Simrad 16' Evo Screen chart plotters (2017)
- Simrad S5100 High performance chirp sonar(2017)
- Airmar R109 CHIRP transducer
- Simrad Halo 72 mi radar (2017)
- New Satellite phones (2019)
- Furuno RD-30
- Simrad AP25 Auto Pilot
- (2) ICOM 604 VHF Radios
- Two Gyro Scope Stabilizers - ARG 2000
- 1200 GPD FCI Water Maker
- Ice Chipper
- Washer/ Dryer ( New drive belt on dryer)
- Awesome cockpit/bridge sound system. 5amp, 3000 watt JL audio system
- Upgraded generator 20KW in lieu of standard 15KW

---

## Other Updates/ Upgrades

---

- New Salon Ac 5/19
- New AC raw water pump 10/19
- New EZ2CY 2/19
- Bottom Painted 2/19
- ACR Spotlight
- Cockpit resprayed with algrip
- Fighting chair refinish 2/18
- LED lights in salon and rooms
- DVR & Camera System viewed remotely with wifi
- Bose 3-2-1 interior sound system
- New Anchor Windless motor 5/19
- New cutlass bearing 2/18
- Bigger 1360 Mans w 2500 hours instead of 1100s

---

## Exclusions

---

Owner's personal belongings.

## **Disclaimer**

---

The Company offers the details of this vessel or yacht in good faith but cannot guarantee or warrant the accuracy of this information nor warrant the condition of the vessel. A buyer should instruct his representatives, agents, or his surveyors, to investigate such details as the buyer desires validated. This vessel or yacht is offered subject to prior sale, price change, or withdrawal without notice.

# PHOTOS

**Bertram 510 Convertible**



**Bertram 510 Convertible**



**Bertram 510 Convertible**



**Bertram 510 Convertible**



**Bertram 510 Convertible**



**Bertram 510 Convertible**



**Bertram 510 Convertible**



**Bertram 510 Convertible**



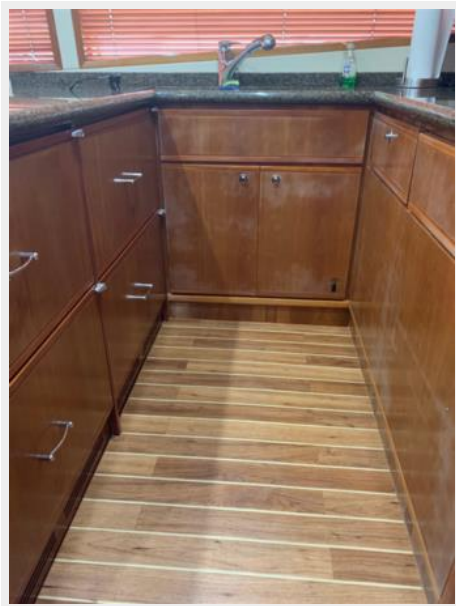
**Bertram 510 Convertible**



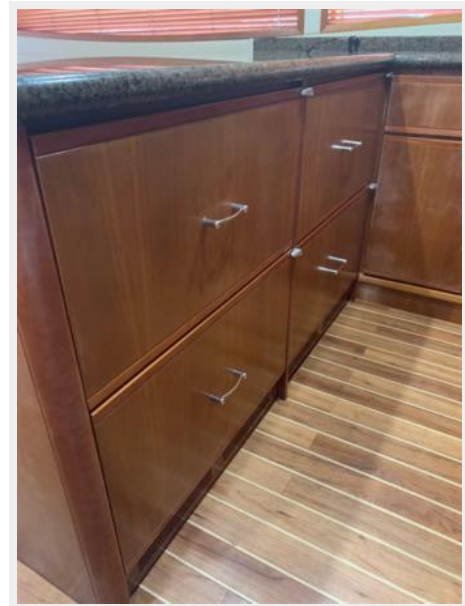
**Bertram 510 Convertible**



**Bertram 510 Convertible**



**Bertram 510 Convertible**



**Bertram 510 Convertible**



**Bertram 510 Convertible**





**Bertram 510 Convertible**



**Bertram 510 Convertible**



**Bertram 510 Convertible**



**Bertram 510 Convertible**



**Bertram 510 Convertible**



**Bertram 510 Convertible**



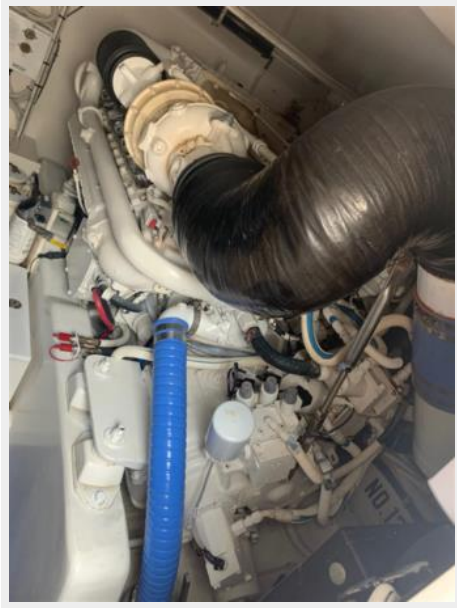
**Bertram 510 Convertible**



**Bertram 510 Convertible**



**Bertram 510 Convertible**



**Bertram 510 Convertible**



**Bertram 510 Convertible**



**Bertram 510 Convertible**





**Bertram 510 Convertible**



**Bertram 510 Convertible**



**Bertram 510 Convertible**



**Bertram 510 Convertible**



**Bertram 510 Convertible**



**Bertram 510 Convertible**



## Bertram 510 Convertible



---

# CONTACTS

---

Andrey Shestakov, leading yacht broker of the sales department of Shestakov Yacht Sales Inc. Shestakov Yacht Sales Inc., the official representative of the Miami/Fort Lauderdale FL headquarters.

---

## Contact details

---

Email: [andrey@shestakovyachtsales.com](mailto:andrey@shestakovyachtsales.com)

Web: [shestakovyachtsales.com/en/](http://shestakovyachtsales.com/en/)

---

## Telephones

---

USA: +1(954)274-4435

---

## Office hours

---

Monday – Saturday: **9:00 - 21:00** EDT

Sunday: **closed**

---

## Address

---



Harbour Towne Marina, 850 NE 3rd St,  
STE 213, Dania, FL 33004