

## CHRISSY ANN — LUHRS



**Builder:** LUHRS

**Year Built:** 2001

**Model:** Cruising Yacht

**Price:** PRICE ON APPLICATION

**Location:** United States

**LOA:** 32' 0" (9.75m)

**Beam:** 13' 0" (3.96m)

**Max Draft:** 3' 1" (0.94m)

**Cruise Speed:** 22 Kts. (25 MPH)

**Max Speed:** 28 Kts. (32 MPH)

Our experienced yacht broker, Andrey Shestakov, will help you choose and buy a yacht that best suits your needs **Chrissy Ann — LUHRS** from our catalogue. Presently, at Shestakov Yacht Sales Inc., we have a wide variety of yachts available on our sale's list. We also work in close contact with all the big yacht manufacturers from all over the world.

If you would like to buy a yacht **Chrissy Ann — LUHRS** or would like help answering any questions concerning purchasing, selling or chartering a yacht, please call **+1(954)274-4435**

---

# TABLE OF CONTENTS

---

TABLE OF CONTENTS	2
SPECIFICATIONS	3
Overview	3
Basic Information	3
Dimensions	3
Speed, Capacities and Weight	4
Accommodations	4
Hull and Deck Information	4
Engine Information	4
DETAILED INFORMATION	5
Overview	5
Exclusions	5
Disclaimer	5
PHOTOS	7
CONTACTS	13
Contact details	13
Telephones	13
Office hours	13
Address	13

---

# SPECIFICATIONS

---

## Overview

---

The Luhrs 32 Open is a very handsome open express with a good deal of value built into her affordable price. Designed as a smaller alternative to the 38 Open, the 32 is built on a deep-V hull, a wide beam, and a considerable amount of flare at the bow. The deck plan is arranged with a walk around center console and flanking bench seats and Captain Chairs on the bridge deck level, and a big fishing cockpit aft with a transom door, molded tackle center, and stand up livewell. Inside, the 32 Open has berths for five with a V-berth/dinette forward and a convertible settee whose hinged backrest becomes a pilot berth at night. The teak woodwork, Corian countertops, and upscale fabrics make this an attractive and easily cleaned interior. The list of standard & optional equipment is impressive: full tower with controls, hardtop with electronics box, enclosure panels, and cockpit washdowns. The powerplant in this Luhrs are twin Mercruiser 7.4 MPI's with approx. 600 hours on them. Luhrs has included everything but the tackle to make the 32 Open one of the most complete sportfisherman on the market. The 32 includes: bait prep and rigging stations, washdowns, rod holders and rocket launchers. With every Luhrs, three generations of experience combine with modern engineering and production boat building techniques to provide one of the most affordable, full-featured fishing boats in the industry. From the tower to the transom door, every piece of equipment and its placement is engineered to provide the best advantage on the water.

## Basic Information

---

**Category:** Cruising Yacht

**Sub Category:** Express

**Model Year:** 2001

**Year Built:** 2001

**Country:** United States

## Dimensions

---

**LOA:** 32' 0" (9.75m)

**Beam:** 13' 0" (3.96m)

**Max Draft:** 3' 1" (0.94m)

**Clearance:** 15' 10" (4.83m)

**MFG Length:** 32' 0" (9.75m)

---

## Speed, Capacities and Weight

---

**Cruise Speed:** 22 Kts. (25 MPH)

**Max Speed:** 28 Kts. (32 MPH)

**Displacement:** 15000 Pounds

**Water Capacity:** 60 Gallons

**Holding Tank:** 28 Gallons

**Fuel Capacity:** 340 Gallons

---

## Accommodations

---

**Total Cabins:** 1

**Total Berths:** 2

**Total Heads:** 1

---

## Hull and Deck Information

---

**Hull Material:** Fiberglass

---

## Engine Information

---

**Engines:** 2

**Manufacturer:** Mercruiser

**Model:** 7.4 MPI

**Engine Type:** Inboard

**Fuel Type:** Gas

---

# DETAILED INFORMATION

---

## Overview

---

### Helm

- Sony stereo
- ICOM VHF
- Simrad NSE 12 multi-function electronics
- Ritchie Compass
- Outriggers
- Simrad 3 Radar

### Accommodations

- V Berth
- Sony Stereo
- RCA TV
- Large refrigerator
- Microwave
- Faucet and sink
- Stand-up shower
- Electric head

### Deck and Hull features

- 6 Stainless Steel Cleats
- Insulated fish box
- Tower mounted Rocket Launcher
- Covered Bait Well
- Cockpit Sink
- (4) Gunwale mounted rod holders
- Transom/Fish Door
- Swim Platform
- Built-in Tackle Center
- Aluminum Tower with Rocket Launcher

## Exclusions

---

Owner's personal belongings.

## Disclaimer

---

The Company offers the details of this vessel or yacht in good faith but cannot guarantee or warrant the accuracy of this information nor warrant the condition of the vessel. A buyer should instruct his representatives, agents, or his surveyors, to investigate such details as the buyer desires validated. This vessel or yacht is offered subject to prior sale, price change, or withdrawal without notice.

# PHOTOS

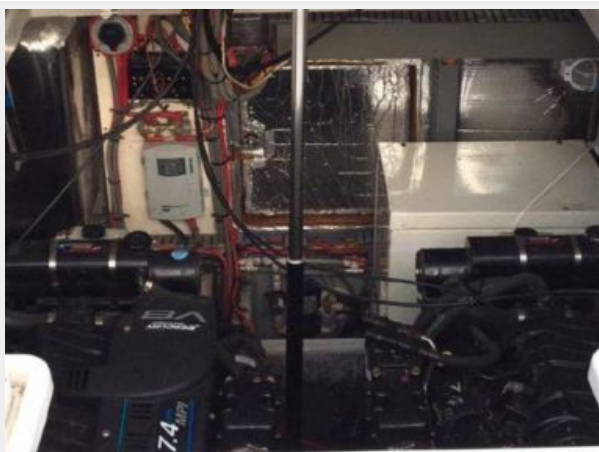














# CONTACTS

---

Andrey Shestakov, leading yacht broker of the sales department of Shestakov Yacht Sales Inc. Shestakov Yacht Sales Inc., the official representative of the Miami/Fort Lauderdale FL headquarters.

## Contact details

---

Email: [andrey@shestakovyachtsales.com](mailto:andrey@shestakovyachtsales.com)

Web: [shestakovyachtsales.com/en/](http://shestakovyachtsales.com/en/)

## Telephones

---

USA: +1(954)274-4435

## Office hours

---

Monday – Saturday: **9:00 - 21:00** EDT

Sunday: **closed**

## Address

---



Harbour Towne Marina, 850 NE 3rd St,  
STE 213, Dania, FL 33004