

RESTLESS SPIRIT II — CATALINA



Судостроитель: CATALINA

Год постройки: 1995

Модель: Sloop

Цена: ЦЕНА ЯХТЫ ПО ЗАПРОСУ

Местонахождение: United States

Длина общая: 32' 6" (9.91m)

Ширина: 11' 9" (3.58m)

Мин. осадка: 6' 0" (1.83m)

Купить **RESTLESS SPIRIT II — CATALINA** а также выбрать подходящую вам яхту из нашего каталога яхт вам поможет опытный яхтенный брокер Андрей Шестаков. На сегодняшний день компания **Shestakov Yacht Sales Inc.** имеет большое количество яхт в собственном списке продаж, а также тесно сотрудничает со всеми крупными яхтенными производителями по всему миру.

Для того чтобы купить яхту **RESTLESS SPIRIT II — CATALINA** а также проконсультироваться по любому вопросу связанному с покупкой, продажей, чартером яхт позвоните по телефону **+7(918)465-66-44**.

ОГЛАВЛЕНИЕ

ОГЛАВЛЕНИЕ	2
ХАРАКТЕРИСТИКИ	5
Обзор	5
Основная информация	6
Размеры	6
Скорость, вместимость и масса	6
Размещение	6
Корпус и палуба	6
Информация о двигателе	7
ПОДРОБНОЕ ОПИСАНИЕ	8
ACCOMMODATIONS	8
GALLEY	9
HEAD	9
WATER SYSTEMS	9
HULL AND DECK	10
SAILS AND RIGGING	10
ENGINE & MACHINERY	11
ELECTRICAL	11
ELECTRONICS	11
OTHER EQUIPMENT	11
EXCLUSIONS	12
Исключения	12
Отказ от ответственности	12
ФОТОГРАФИИ	13
CD6D19A3-6647-420D-B62A-74CF4D533F19_1_201_a	13
F21E23FA-C1AB-444D-B320-EBC3C4BD7ABA_1_201_a	13
4E5870C9-A06B-4286-9504-491EE4347D6B_1_201_a	13
CE3C99FE-747D-4EE2-8A11-FC04A088500F_1_201_a	13

9B3676AB-729F-47C7-A05F-35659CC1ED35_1_201_a	14
2BA24E89-EC12-4FCA-B154-384CEB349BFF_1_201_a	14
0A27CBF1-58C4-4B61-857B-E14BB0A3DEFB_1_201_a	14
987E7D9D-FAC1-408F-A888-88CAA42634D1_1_201_a	14
22D37A5F-E93A-4BAA-B8E7-A003080516E7_1_201_a	15
D27B9F87-2ABE-4F32-84F8-6194D6901327_1_201_a	15
4F42B8D5-A728-40C2-9425-BA29336C6A94_1_201_a	15
1E8CEDD2-3D2F-4EC7-9DCA-E97AEC22FACF_1_201_a	15
EE074318-EE4F-4609-8FCC-696E08858E30_1_201_a	15
E79C21C6-A392-4647-914E-37AF330DB031_1_201_a	15
32A5DC02-0E6B-4114-B027-ADC46F0A68B8_1_201_a	16
7236FC6E-5498-4C3A-8DF3-EEDC91D28367_1_201_a	16
14DC926B-1E76-4E17-B9D1-55D0028939E6_1_201_a	16
C1C24A10-09A8-47AF-92F2-DE0C34C3EB11_1_201_a	16
248929DC-B344-4074-8738-50731C2320AA_1_201_a	17
5FE917EB-E754-4805-9D33-594E5E8C2400_1_201_a	17
3CB6856F-E888-40B6-B12E-0F5E24AB9415_1_201_a	17
054FAEBD-5A22-4E2B-B929-75214EA1FE96_1_201_a	17
72FD5363-C892-4A68-BF63-B04CF7DD5DE6_1_201_a	18
2219B962-6FBD-427E-9D4A-5CF91ACE3355_1_201_a	18
BF2B7A42-F735-48FE-A5E4-5B05D7609979_1_201_a	18
A1447757-AAA4-40A2-95B6-E17FB84F184C_1_201_a	18
07E92954-86B7-4C2A-844E-64B2A7B19540_1_201_a	19
8495CD74-A695-4DD5-8B5F-62AF1C6CAA78_1_201_a	19
78C55515-AA67-415B-AA02-F0F5E7AC797D_1_201_a	19
9E76CB15-6780-4A75-8569-70D3BAD9D4D8_1_201_a	19
catalina_320_drawing	20
CPYB Logo	20
КОНТАКТЫ	21

Контактная информация	21
Телефоны	21
Время работы	21
Адрес	21

ХАРАКТЕРИСТИКИ

Обзор

Please contact me for a FaceTime live walk-thru showing of this boat!

RECENT PRICE REDUCTION 1/24/2020!! PRICE IS AS-IS, WHERE-IS AND HAS BEEN REDUCED TO COMPENSATE FOR SURVEY FINDINGS

The Catalina 320 is yet another Gerry Douglas success story. Introduced in 1993, there were 1175 hulls built between then and when they discontinued the model in 2012.

Based on a high-performance and high-volume computer-optimized hull design, the 320 is light on the helm and tracks well under sail or power.

Inboard shrouds make moving about on deck safe and provide higher sheeting angles, while the below deck windlass keeps the lines clean and the foredeck safer. The large cockpit is inviting to family and friends, with stern rail seats and a walk-thru transom for easy access to the water. The wide coamings and ergonomically correct seats and backs are important features, considering the cockpit is where we all spend the most time when aboard.

Below, there are two private cabins and a spacious, well-ventilated salon that make weekends on the boat exceptionally comfortable. The galley area is wonderful for a 32' boat and has loads of refrigeration space.

The Catalina 320 is the perfect boat to combine both racing and cruising comfortably with family and friends.

The boat was surveyed in April of 2019 by a prospective first-time buyer. The boat had been sitting a while and consequently, there was a list of things to deal with, as there is at every survey. While the owner was willing to get people working on the list, the buyer didn't want to wait and moved on. He provided the **survey findings**, which **are available upon request**. Many of the items have been completed, but the price has also been reduced accordingly to compensate.

Основная информация

Тип судна: Sloop	Модельный год: 1995
Год постройки: 1995	Страна: United States
Номер регистрации в береговой охране: 1042861	Кубрик: Да

Размеры

Длина общая: 32' 6" (9.91m)	Длина по ватерлинии: 28' 0" (8.53m)
Ширина: 11' 9" (3.58m)	Мин. осадка: 6' 0" (1.83m)
Трапы: 47' 7" (14.50m)	

Скорость, вместимость и масса

Водоизмещение: 11300 Pounds	Вместимость воды: 50 Gallons
Вместимость сточного бака: 22 Gallons	Объем топливного бака: 20 Gallons

Размещение

Всего кают: 2

Корпус и палуба

Материал корпуса: Fiberglass	Материал палубы: Fiberglass Sandwich
Комплектация корпуса: Fin & Spade	Отделка корпуса: Plastic
Дизайнер корпуса: GERRY DOUGLASS	

Информация о двигателе

Двигатели: 1

Производитель: Westerbeke

Модель: 30B

Тип двигателя: Inboard

Тип топлива: Diesel

ПОДРОБНОЕ ОПИСАНИЕ

ACCOMMODATIONS

Forward stateroom: At the forward end of the V berth are two louvered lockers overhead. The berth has a removable center insert and makes up into a 72" x 23" x 70" bunk. There is storage beneath the berth and white oak staving lining the hullsides. Lockers are beneath the berth on either wing of the V, while two drawers are on center. There is a large overhead hatch and two overhead lights. A bi-fold door can be closed for privacy or open for better ventilation.

Additionally, the bulkhead has removable panels on either side of the door, so the entire space can be open for letting the breeze blow through. Headroom up here is 5'10".

Saloon: The saloon space features a 6'5" long straight settee on port and a 6'8" long C-shaped one on starboard. The dinette table can comfortably seat four and can be lowered to create an additional double berth. Both settees have storage beneath and behind them. Both sides have fiddled shelves above and behind the seat backs, with sliding louvered door lockers framing fixed port lights above that. Headroom is 6'3"; there are three fixed ports, four opening ports, an overhead hatch, overhead lights and a 12v. fan for lighting and ventilation.

Nav station: On port and just forward of the galley, the nav station has a spacious chart table that will accommodate chart books, with a nice amount of storage beneath the top. Electrical panel controls are located there as well as interior electronics. There is an overhead light as well as a flexible arm chart light. Headroom at the nav is 6'3".

Galley: The U-shaped galley is at the base of the companionway on port. Along the aft end is the refrigerated ice box. Top loading and with two lids, it is large for a boat of this size. Behind and above it is a deep drop-door "pantry". Moving around along the hull there is two burner stove and oven, with a small cubby beneath it. Forward of the stove is a top-loading dry bin; the counter continues out toward centerline, where the sinks are oriented (as they should be). Beneath the sinks you will find a locker and three drawers; above it is an organizer shelf for dishes. Above the counter and along the hullside are two drop-down door storage lockers, with a microwave between them. There are two overhead and one under counter lights and a fixed light for lighting. Headroom in the galley is 6'3".

Head: The head is located on starboard at the base of the companionway. As you enter the space, the head is to your left and the sink to your right. A sliding doored medicine cabinet is behind the head and a mirror is above the sink. A fiddled shelf area is above both of the mirrors. To the left of the head is a large dressing mirror. The molded sink has a stainless steel grab bar and a pull-out shower wand with sprayer. Headroom is 6'2"; there is an overhead hatch, two fixed lights and an overhead light for lighting and ventilation.

Aft stateroom: Entry into the aft cabin is on starboard. As you enter there is 6'3" headroom. There are two drawers and a hanging locker to your left, with a changing seat and storage beneath the changing seat. The berth is athwart; it is 7'5" long at the forward end and 6' long

along the transom. Bunk width is 57". There is a padded headboard at the head of the berth, with numerous lockers, shelves and a fixed light above and behind it. A cubby is aft on starboard and access to the cockpit lazarette on port. Ventilation and lighting is from two fixed lights, three opening ports, two reading lights and a 12v. fan.

- Teak and holly cabin sole
- Ash hullside staving and trim
- Blue upholstery
- All fixed lights have accordion blinds

GALLEY

- Corian countertops
- Deep double stainless steel sinks
- Scandvik H/C water mixer with gooseneck faucet
- Ice box (5.8 cu. ft.)
- Adler-Barbour 12v refrigeration
- Two burner Hillerange LPG stove with oven and broiler
- 10# aluminum LPG tank in dedicated locker
- Samsung microwave

HEAD

- Molded head unit for easy wipe down
- Molded in sink and countertop
- Hot and cold pressure water with pull-out sprayer wand
- Molded in non-skid sole
- Electric shower sump pump
- Par manual head
- Tankwatch electric holding tank monitor
- Jabsco macerator pump

WATER SYSTEMS

- 6 gallon hot water heater
- Electric bilge pump
- Whale manual bilge pump
- Hot/cold cockpit shower

HULL AND DECK

- Bottom painted with Petit Trinidad (07/19)
- Single anchor bow roller
- Danforth anchor with ¼" chain and ½" three strand rode
- Plow anchor
- Maxwell 500 electric windlass with up foot switch
- Double vinyl coated life lines with port and starboard gates
- Off-white deck with patterned contrasting grey non-skid
- Stainless steel grab rails
- Transom gate/swim ladder
- Sugar scoop swim platform
- Stern rail seats
- Dodger with aft grab bar (frame good, needs fabric)
- Bimini (frame good, needs fabric)
- Three opening deck hatches
- Four fixed lights
- Six opening ports

SAILS AND RIGGING

- Schaefer roller furling
- Deck stepped double spreader aluminum mast
- 1x19 stainless steel wire standing rigging
- Split backstay
- Rigid boom vang
- Topping lift
- Single line reefing
- Schaefer Genoa tracks mounted inboard for higher sheeting angle
- Mid-boom mainsheet track and cars
- Mainsheet and mainsheet car control lines ('18)
- Main halyard ('18)
- Roller furling line replaced ('19)
- Dutchman sail management system
- Line clutches for mainsheet car control lines
- Lewmar #44 2-speed self-tailing primary winches (2)
- Lewmar #30 2-speed self-tailing housetop control winches (2)
- Spinlock line clutches (5)
- Line organizers on cockpit bulkhead for tails
- Dacron Genoa (serviced 04/19)
- Dacron Mainsail with two reef points

ENGINE & MACHINERY

- Westerbeke 30B diesel engine with 152 hours on engine hour meter
- Racor R24T fuel filter
- Fuel tank replaced ('19)
- Fuel filters changed ('19)
- Oil pressure switch ('19)
- Water temperature gauge replaced ('19)
- Oil and transmission fluids and filters changed (07/19)
- Valves adjusted ('19)
- Raw water pump rebuilt ('19)
- Engine aligned ('19)
- New rear motor mounts ('19)
- Fiberglass muffler
- Conventional stuffing box
- Martek 3-blade feathering propeller
- Edson steering pedestal w/stainless steel destroyer wheel
- Dual lever engine controls
- Ritchie compass
- Spare 15RH9 three blade prop

ELECTRICAL

- 30A shore power connection with 50' cord
- 120V AC electrical panel
- 120V receptacles throughout with GFCI protection
- 12v DC electrical panel with volt meter
- Guest battery selector/combiner switch
- Two 4D batteries ('19)

ELECTRONICS

- Autohelm 4000+ wheel autopilot
- B & G wind
- B & G Triton 2 Multi display ('19)
- B & G DST800 Multi Sensor transducer ('19)
- ICOM M424G VHF radio w/DSC ('19)
- Panasonic CD player/receiver
- Jensen saloon stereo speakers

OTHER EQUIPMENT

- Carry On hatch mounted air conditioner
- Teak cockpit table and drink holder
- Throwable floatation devices (2)
- Wind scoop
- Magma LPG grill
- Dock lines
- Boat hook
- Windex
- Clinometer
- Winch handle holder ('18)
- Lifeline pads in cockpit area

EXCLUSIONS

Owner's personal effects and any items not specifically described in this listing

Исключения

При продаже яхты исключаются личные вещи владельца.

Отказ от ответственности

Компания предоставляет описание судна или яхты добросовестно, но не может гарантировать точность этой информации, а также не ручается за техническое состояние. Покупатель должен проинструктировать своих агентов или оценщиков исследовать представленную информацию более подробно, по собственному желанию. Продажа судна или яхты, изменение цены или снятие с продажи будет происходить без предварительного уведомления.

ФОТОГРАФИИ

CD6D19A3-6647-420D-B62A-
74CF4D533F19_1_201_a



F21E23FA-C1AB-444D-B320-
EBC3C4BD7ABA_1_201_a



4E5870C9-A06B-4286-9504-
491EE4347D6B_1_201_a



CE3C99FE-747D-4EE2-8A11-
FC04A088500F_1_201_a



2BA24E89-EC12-4FCA-B154-
384CEB349BFF_1_201_a



9B3676AB-729F-47C7-A05F-
35659CC1ED35_1_201_a



0A27CBF1-58C4-4B61-857B-
E14BB0A3DEFB_1_201_a



987E7D9D-FAC1-408F-A888-
88CAA42634D1_1_201_a



22D37A5F-E93A-4BAA-B8E7-
A003080516E7_1_201_a



D27B9F87-2ABE-4F32-84F8-
6194D6901327_1_201_a



4F42B8D5-A728-40C2-9425-
BA29336C6A94_1_201_a



1E8CEDD2-3D2F-4EC7-9DCA-
E97AEC22FACF_1_201_a



EE074318-EE4F-4609-8FCC-
696E08858E30_1_201_a



E79C21C6-A392-4647-914E-
37AF330DB031_1_201_a



**32A5DC02-0E6B-4114-B027-
ADC46F0A68B8_1_201_a**



**7236FC6E-5498-4C3A-8DF3-
EEDC91D28367_1_201_a**



**C1C24A10-09A8-47AF-92F2-
DE0C34C3EB11_1_201_a**



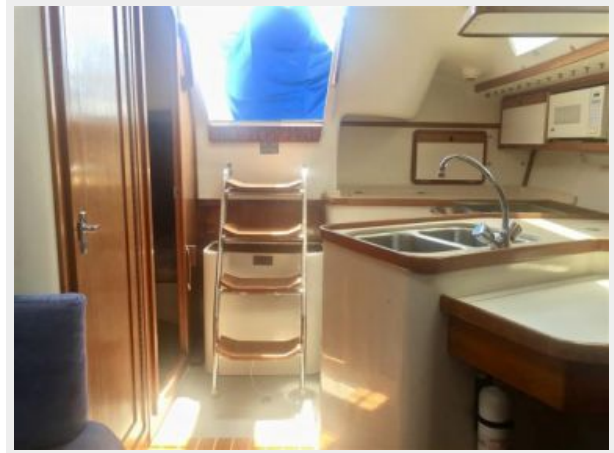
**14DC926B-1E76-4E17-B9D1-
55D0028939E6_1_201_a**



248929DC-B344-4074-8738-
50731C2320AA_1_201_a



5FE917EB-E754-4805-9D33-
594E5E8C2400_1_201_a



3CB6856F-E888-40B6-B12E-
0F5E24AB9415_1_201_a



054FAEBD-5A22-4E2B-B929-
75214EA1FE96_1_201_a



2219B962-6FBD-427E-9D4A-
5CF91ACE3355_1_201_a



72FD5363-C892-4A68-BF63-
B04CF7DD5DE6_1_201_a



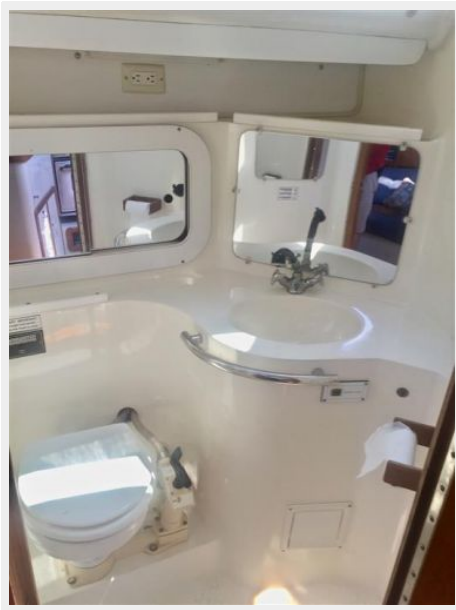
A1447757-AAA4-40A2-95B6-
E17FB84F184C_1_201_a



BF2B7A42-F735-48FE-A5E4-
5B05D7609979_1_201_a



07E92954-86B7-4C2A-844E-
64B2A7B19540_1_201_a



8495CD74-A695-4DD5-8B5F-
62AF1C6CAA78_1_201_a



78C55515-AA67-415B-AA02-
F0F5E7AC797D_1_201_a

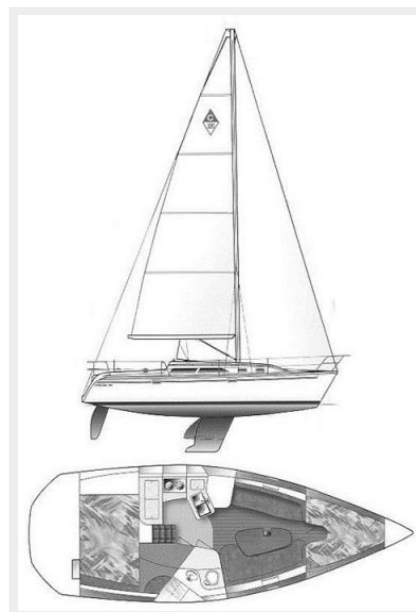


9E76CB15-6780-4A75-8569-
70D3BAD9D4D8_1_201_a



catalina_320_drawing

CPYB Logo



КОНТАКТЫ

Андрей Шестаков (Andrey Shestakov) – ведущий яхтенный брокер отдела продаж яхт и судов компании Shestakov Yacht Sales Inc. Официальный представитель Shestakov Yacht Sales Inc. для русскоговорящих клиентов в центральном офисе компании в Майами/Форт Лодердейл/Флорида/США.

Контактная информация

Email: andrey@shestakovyachtsales.com

Web: shestakovyachtsales.com

Телефоны

Краснодарский край: **+7(918)465-66-44**

США, Майами, Флорида: **+1(954)274-4435**

Время работы

Понедельник – Суббота: **9:00 - 21:00**
EDT

Воскресенье: **Закрето**

Адрес



Harbour Towne Marina, 850 NE 3rd St,
STE 213, Dania, FL 33004