

390 EXPRESS COUPE — CRUISERS YACHTS



Builder: CRUISERS YACHTS

Year Built: 2018

Model: cruiser

Price: PRICE ON APPLICATION

Location: United States

LOA: 39' (11.89mm)

Beam: 12.66

Max Draft: 7' 9" (2.36mm)

Our experienced yacht broker, Andrey Shestakov, will help you choose and buy a yacht that best suits your needs 390 Express Coupe — CRUISERS YACHTS from our catalogue. Presently, at Shestakov Yacht Sales Inc., we have a wide variety of yachts available on our sale's list. We also work in close contact with all the big yacht manufacturers from all over the world.

If you would like to buy a yacht 390 Express Coupe — CRUISERS YACHTS or would like help answering any questions concerning purchasing, selling or chartering a yacht, please call +1(954)274-4435

TABLE OF CONTENTS

TABLE OF CONTENTS	2
SPECIFICATIONS	3
Overview	3
Basic Information	4
Dimensions	4
Accommodations	4
Hull and Deck Information	4
Engine Information	4
PHOTOS	5
CONTACTS	7
Contact details	7
Telephones	7
Office hours	7
Address	7

SPECIFICATIONS

Overview

The Cruisers Yachts 39EC has the perfect blend for day yachting and overnighting with its spacious and unique layout above and below deck.

If you're looking to entertain or have an overnight getaway with family and/or friends, look no further than the 39EC.

This beauty comes equipped with the upgraded Hardtop and Extended platform.

Other features include the following:

- Twin Merc 8.2 Mag HO Axis Premier w/ Bravo 3 Drives
- 7.5 KW Gas Generator
- Cockpit A/C
- Base Electronics Package w/ VHF Radio
- Extended Swim Platform (LOA 42' w/ Extended Platform)
- Cockpit Grill (Electric)
- Cockpit Refrigerator
- Windshield Defroster
- Chaise Loungers on Foredeck (Tan)
- Cockpit Enclosure
- Dinette w/ Flip-up Bunks
- Power Actuated Cockpit Seat Backs
- Cockpit Table w/ Filler Cushions
- Absorbed Glass Mat Batteries
- Central Vacuum
- Mid-Cabin Privacy Bulkhead Door
- Amtico Salon Flooring (Walnut)
- TV/DVD - Aft Stateroom & Salon
- Cabin Entry Treads
- Centrifuge Head w/ Holding Tank
- Anchor Washdown System

For additional information on how to make this your pride and joy, contact one of our knowledgeable sales staff.

Basic Information

Category: cruiser

Sub Category: Coupe

Model Year: 2018

Year Built: 2018

Country: United States

Dimensions

LOA: 39' (11.89mm)

Beam: 12.66

Max Draft: 7' 9" (2.36mm)

Accommodations

Total Cabins: 1

Total Heads: 1

Hull and Deck Information

Hull Material: Fiberglass

Hull Color: White

Engine Information

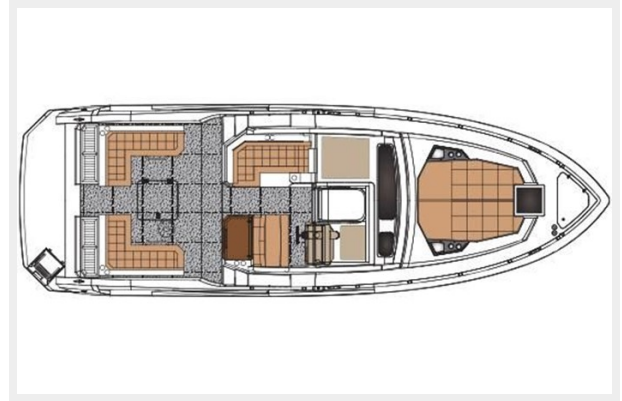
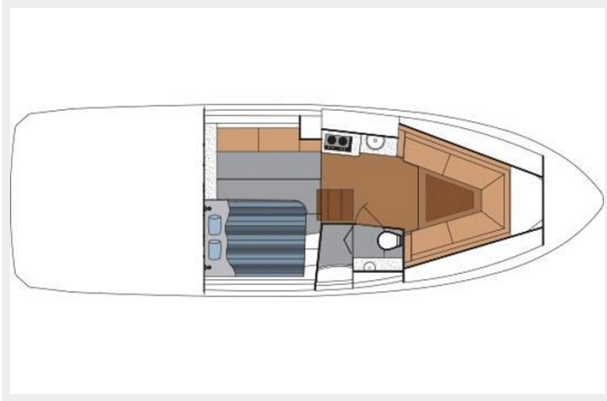
Engines: 2

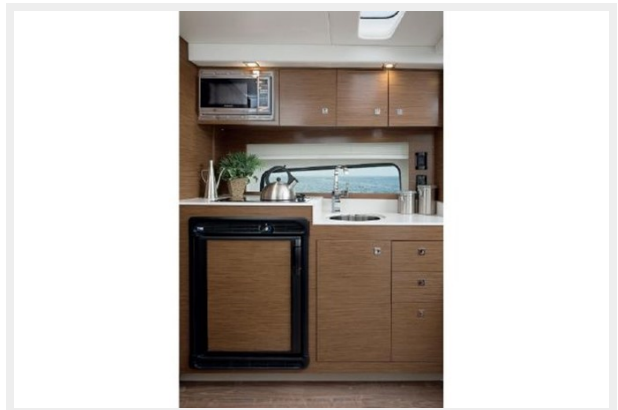
Manufacturer: Mercruiser

Engine Type: I/O

Fuel Type: Gas

PHOTOS





CONTACTS

Andrey Shestakov, leading yacht broker of the sales department of Shestakov Yacht Sales Inc. Shestakov Yacht Sales Inc., the official representative of the Miami/Fort Lauderdale FL headquarters.

Contact details

Email: andrey@shestakovyachtsales.com

Web: shestakovyachtsales.com/en/

Telephones

USA: +1(954)274-4435

Office hours

Monday – Saturday: **9:00 - 21:00** EDT

Sunday: **closed**

Address



Harbour Towne Marina, 850 NE 3rd St,
STE 213, Dania, FL 33004