

COCKTAIL — SEA RAY



Builder: SEA RAY

Year Built: 2012

Model: Cruising Yacht

Price: PRICE ON APPLICATION

Location: United States

LOA: 33' 4" (10.16mm)

Beam: 10.41

Max Draft: 3' 3" (0.99mm)

Our experienced yacht broker, Andrey Shestakov, will help you choose and buy a yacht that best suits your needs **Cocktail — SEA RAY** from our catalogue. Presently, at Shestakov Yacht Sales Inc., we have a wide variety of yachts available on our sale's list. We also work in close contact with all the big yacht manufacturers from all over the world.

If you would like to buy a yacht **Cocktail — SEA RAY** or would like help answering any questions concerning purchasing, selling or chartering a yacht, please call **+1(954)274-4435**

TABLE OF CONTENTS

| | |
|------------------------------|----|
| TABLE OF CONTENTS | 2 |
| SPECIFICATIONS | 3 |
| Overview | 3 |
| Basic Information | 3 |
| Dimensions | 4 |
| Speed, Capacities and Weight | 4 |
| Accommodations | 4 |
| Hull and Deck Information | 4 |
| Engine Information | 4 |
| PHOTOS | 5 |
| CONTACTS | 10 |
| Contact details | 10 |
| Telephones | 10 |
| Office hours | 10 |
| Address | 10 |

SPECIFICATIONS

Overview

This vessel offers a spacious, comfortable layout and all the comforts of home. Whether its a day on the water or a vacation getaway "Cocktail" is ready for fun!!

- Twin Mercruiser ECT 350 MAG MPI AXIUS Bravo 3's with joystick control's and 400 hours on them.
- CruiseAire A/C and Kohler 5KW Generator with less then 70 hours
- New Inline Fuel Pump
- 2 New Water Pumps
- New Risor's and Manifolds
- New Shift Actuator's
- New Flush System for the A/C, Generator and Engines
- New Eisenglass Enclosure
- Both Stern Drives and Engines were Recently Serviced
- New Batteries

Boat Name Cocktail Dimensions LOA: 33 ft 4 in Beam: 10 ft 5 in Maximum Draft: 3 ft 3 in Displacement: 14000 lbs Dry Load Bridge Clearance: 10 ft 3 in Deadrise: 21 ° at Transom Engines Engine 1: Engine Brand: Mercruiser Year Built: 2012 Engine Model: ECT 350 MAG MPI AXIUS Bravo 3 Engine Type: Inboard/Outboard Engine/Fuel Type: Gas/Petrol Location: Port Engine Hours: 450 Engine Power: 300 HP Engine 2: Engine Brand: Mercruiser Year Built: 2012 Engine Model: ECT 350 MAG MPI AXIUS Bravo 3 Engine Type: Inboard/Outboard Location: Starboard Engine Hours: 450 Engine Power: 300 HP Tanks Fresh Water Tanks: (35 Gallons) Fuel Tanks: (200 Gallons) Holding Tanks: (28 Gallons) Accommodations Number of heads: 1 Electronics Autopilot DVD player Navigation center GPS CD player Plotter Compass TV set Cockpit speakers Radio Depthsonder VHF Inside Equipment Microwave oven Air conditioning Hot water Refrigerator Electric head Battery charger Electric bilge pump Deep freezer Heating Electrical Equipment Generator Shore power inlet Outside Equipment/Extras Cockpit shower Cockpit cushions Swimming ladder Cockpit table Electric windlass

Covers Bimini Top

Basic Information

Category: Cruising Yacht

Sub Category: Express

Model Year: 2012

Year Built: 2012

Country: United States

Dimensions

LOA: 33' 4" (10.16mm)

Beam: 10.41

Max Draft: 3' 3" (0.99mm)

Speed, Capacities and Weight

Water Capacity: 35 Gallons

Holding Tank: 28 Gal Gallons

Fuel Capacity: 200 Gal Gallons

Accommodations

Total Cabins: 1

Total Heads: 1

Hull and Deck Information

Hull Material: Fiberglass

Engine Information

Engines: 2

Manufacturer: Mercruiser

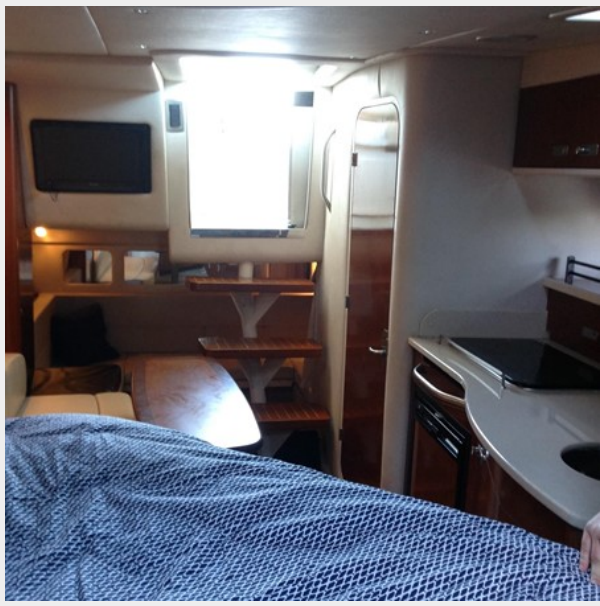
Engine Type: I/O

Fuel Type: Gas/Petrol

PHOTOS











CONTACTS

Andrey Shestakov, leading yacht broker of the sales department of Shestakov Yacht Sales Inc. Shestakov Yacht Sales Inc., the official representative of the Miami/Fort Lauderdale FL headquarters.

Contact details

Email: andrey@shestakovyachtsales.com

Web: shestakovyachtsales.com/en/

Telephones

USA: +1(954)274-4435

Office hours

Monday – Saturday: **9:00 - 21:00** EDT

Sunday: **closed**

Address



Harbour Towne Marina, 850 NE 3rd St,
STE 213, Dania, FL 33004