

NEPTUNUS 62 — NEPTUNUS



Builder: NEPTUNUS

Year Built: 2007

Model: Cruising Yacht

Price: PRICE ON APPLICATION

LOA: 62' (18.9mm)

Beam: 16.58

Min Draft: 4' 11" (1.5mm)

Max Draft: 5' 1" (1.55mm)

Cruise Speed: 23 Knots Kts. (26 MPH)

Max Speed: 28 Knots Kts. (32 MPH)

Our experienced yacht broker, Andrey Shestakov, will help you choose and buy a yacht that best suits your needs **NEPTUNUS 62 — NEPTUNUS** from our catalogue. Presently, at Shestakov Yacht Sales Inc., we have a wide variety of yachts available on our sale's list. We also work in close contact with all the big yacht manufacturers from all over the world.

If you would like to buy a yacht **NEPTUNUS 62 — NEPTUNUS** or would like help answering any questions concerning purchasing, selling or chartering a yacht, please call **+1(954)274-4435**

TABLE OF CONTENTS

TABLE OF CONTENTS	2
SPECIFICATIONS	6
Basic Information	6
Dimensions	6
Speed, Capacities and Weight	6
Accommodations	6
Hull and Deck Information	6
Engine Information	7
PHOTOS	8
Salon Looking Forward	8
Salon to Port	8
Salon Settee to Starboard	8
Salon Settee	8
Salon Settee Looking Aft	8
Salon Portside Looking Aft	8
Salon Wine Cooler	9
Galley Looking Aft	9
Galley Stand Up Refrigerator/Freezer	9
Galley Island	9
Galley Island	9
Galley Portside	9
Galley Glass Storage	10
Galley Dining Area	10
Accommodation Steps	10
Electrical Panel	10
Accommodation Companionway	10
Companionway Laundry	10
Day Head	11

Master Looking Aft	11
Master Looking Starboard	11
Master Looking Port	11
Master Looking Forward	11
Master Cedar Hanging Locker	11
Master Head	12
Master Shower	12
Starboard Guest Cabin	12
Starboard Guest Cabin Looking Aft	12
Starboard Guest Cabin Looking Forward	12
Guest Head	12
Guest Head	13
VIP	13
VIP to Port	13
VIP Looking Aft	13
Bow Sun Lounge	13
Weather Cover	13
Textulene Windshield Cover	14
Windlass Detail	14
All Chain Rode	14
Bow	14
Side Decks	14
Aft Deck	14
Aft Deck	15
Aft Deck Grill	15
Easy Flybridge Stairs	15
Transom Area	15
Transom Gates	15
Hydraulics Swim Platform	15

Crew Entrance	16
Aft Crew Cabin	16
Aft Crew Head	16
Aft Crew Lounge	16
Aft Crew Shower	16
Flybridge Steps	16
Flybridge Looking Aft	17
Flybridge Custom Bar Aft	17
Dining Table	17
Cocktail Table	17
Flybridge Bar Forward	17
New Flybridge AC	17
Flybridge Sun Lounge	18
Flybridge Sun Lounge	18
Companion Seat	18
Helm	18
Double Stidd Helm Chair	18
Helm Detail Port	18
Helm Detail Starboard	19
Helm Starboard Return	19
Copilot Plotter	19
Portside Flybridge Wing Station	19
Hardtop Access	19
Hardtop Equipment	19
Starboard Engine	20
Port Engine	20
Engine Room Forward	20
Watermaker	20
CAT Generator	20

AC Chillers	20
March 2019 Yard Visit	21
March 2019 Yard Visit	21
March 2019 Yard Visit	21
March 2019 Yard Visit	21
New Style Hull Windows	21
Alternate Profile	21
Transom	22
CONTACTS	23
Contact details	23
Telephones	23
Office hours	23
Address	23

SPECIFICATIONS

Basic Information

Category: Cruising Yacht

Sub Category: Sedan Cruiser

Model Year: 2008

Year Built: 2007

Dimensions

LOA: 62' (18.9mm)

Beam: 16.58

Min Draft: 4' 11" (1.5mm)

Max Draft: 5' 1" (1.55mm)

Speed, Capacities and Weight

Cruise Speed: 23 Knots Kts. (26 MPH)

Cruise Speed Range: 350

Max Speed: 28 Knots Kts. (32 MPH)

Gross Tonnage: 32 Pounds

Water Capacity: 230 Gallons

Holding Tank: 110 Gal Gallons

Fuel Capacity: 1050 Gal Gallons

Accommodations

Total Cabins: 3

Sleeps: 6

Total Heads: 3

Crew Berths: 1

Hull and Deck Information

Hull Material: Fiberglass

Deck Material: Teak

Hull Configuration: Modified Deep Vee

Hull Designer: Tony Castro

Exterior Designer: Neptunus Yachts

Interior Designer: Neptunus Yachts

Engine Information

Engines: 2

Manufacturer: Caterpillar

Engine Type: Inboard

Fuel Type: Diesel

PHOTOS

Salon Looking Forward



Salon to Port



Salon Settee to Starboard



Salon Settee



Salon Settee Looking Aft



Salon Portside Looking Aft



Salon Wine Cooler



Galley Looking Aft



Galley Stand Up Refrigerator/Freezer



Galley Island



Galley Island



Galley Portside



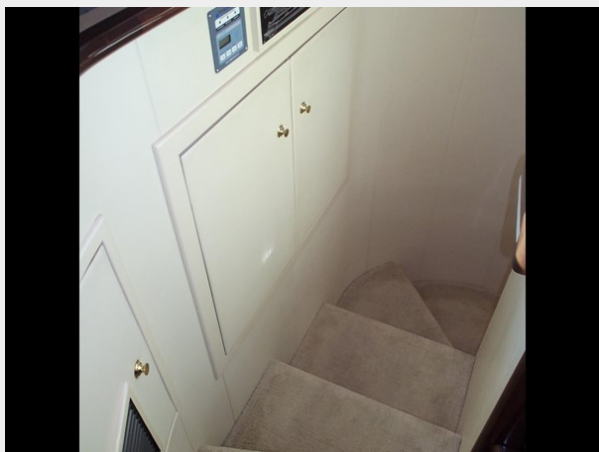
Galley Glass Storage



Galley Dining Area



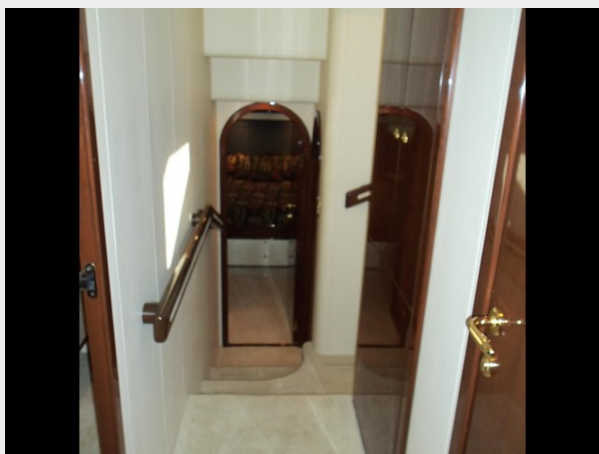
Accommodation Steps



Electrical Panel



Accommodation Companionway



Companionway Laundry



Day Head



Master Looking Aft



Master Looking Starboard



Master Looking Port



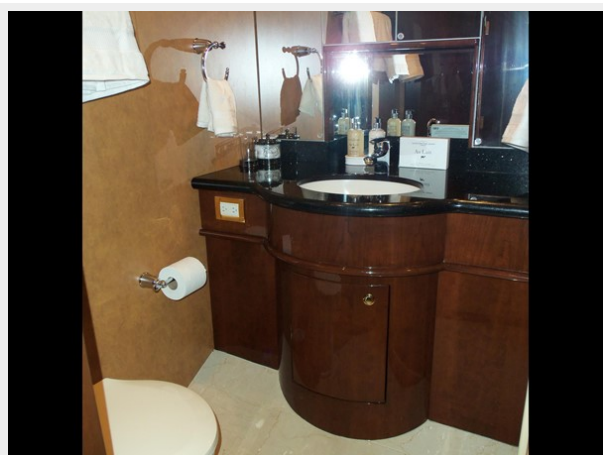
Master Looking Forward



Master Cedar Hanging Locker



Master Head



Master Shower



Starboard Guest Cabin



Starboard Guest Cabin Looking Aft



Starboard Guest Cabin Looking Forward



Guest Head



Guest Head



VIP



VIP to Port



VIP Looking Aft



Bow Sun Lounge



Weather Cover



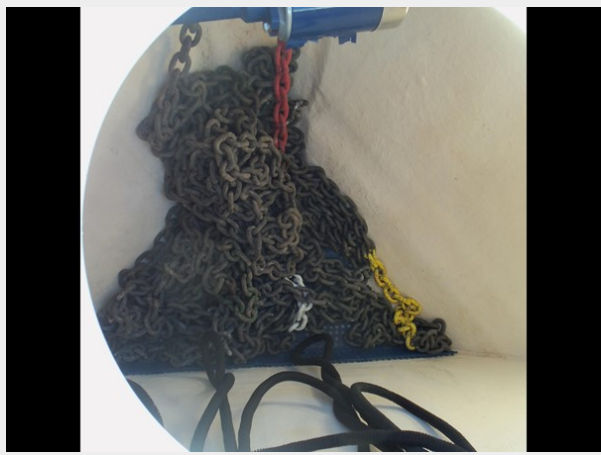
Textulene Windshield Cover



Windlass Detail



All Chain Rode



Bow



Side Decks



Aft Deck



Aft Deck



Aft Deck Grill



Easy Flybridge Stairs



Transom Area



Transom Gates



Hydraulics Swim Platform



Crew Entrance



Aft Crew Cabin



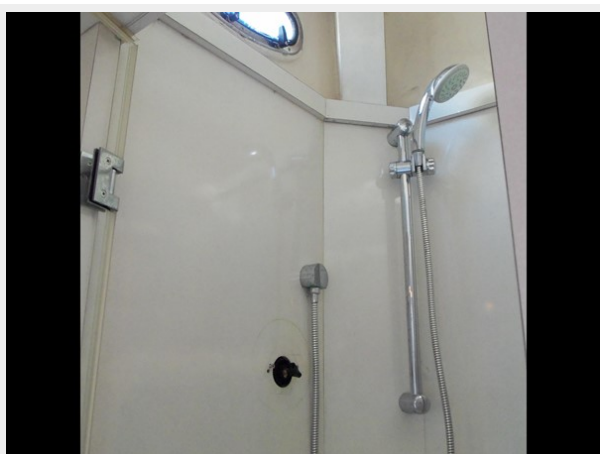
Aft Crew Head



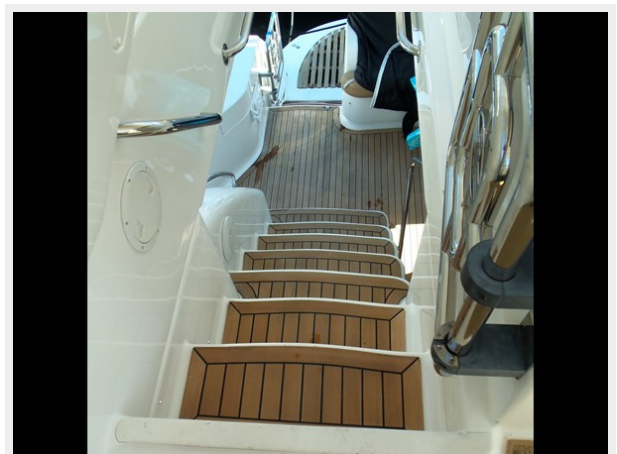
Aft Crew Lounge



Aft Crew Shower



Flybridge Steps



Flybridge Looking Aft



Flybridge Custom Bar Aft



Dining Table



Cocktail Table



Flybridge Bar Forward



New Flybridge AC



Flybridge Sun Lounge



Flybridge Sun Lounge



Companion Seat



Helm



Double Stidd Helm Chair



Helm Detail Port



Helm Detail Starboard



Helm Starboard Return



Copilot Plotter



Portside Flybridge Wing Station



Hardtop Access



Hardtop Equipment



Starboard Engine



Port Engine



Engine Room Forward



Watermaker



CAT Generator



AC Chillers



March 2019 Yard Visit



March 2019 Yard Visit



March 2019 Yard Visit



March 2019 Yard Visit



Alternate Profile



New Style Hull Windows



Transom



CONTACTS

Andrey Shestakov, leading yacht broker of the sales department of Shestakov Yacht Sales Inc. Shestakov Yacht Sales Inc., the official representative of the Miami/Fort Lauderdale FL headquarters.

Contact details

Email: andrey@shestakovyachtsales.com

Web: shestakovyachtsales.com/en/

Telephones

USA: +1(954)274-4435

Office hours

Monday – Saturday: **9:00 - 21:00** EDT

Sunday: **closed**

Address



Harbour Towne Marina, 850 NE 3rd St,
STE 213, Dania, FL 33004