

LIL HAP — BELZONA MARINE



Builder: BELZONA MARINE

Year Built: 2014

Model: Boats

Price: PRICE ON APPLICATION

LOA: 32' 6" (9.91mm)

Beam: 10.66

Min Draft: 2' 4" (0.71mm)

Max Draft: 2' 6" (0.76mm)

Cruise Speed: 32 Knots Kts. (37 MPH)

Max Speed: 43 Knots Kts. (49 MPH)

Our experienced yacht broker, Andrey Shestakov, will help you choose and buy a yacht that best suits your needs **LIL HAP — BELZONA MARINE** from our catalogue. Presently, at Shestakov Yacht Sales Inc., we have a wide variety of yachts available on our sale's list. We also work in close contact with all the big yacht manufacturers from all over the world.

If you would like to buy a yacht **LIL HAP — BELZONA MARINE** or would like help answering any questions concerning purchasing, selling or chartering a yacht, please call **+1(954)274-4435**

TABLE OF CONTENTS

TABLE OF CONTENTS	2
SPECIFICATIONS	5
Basic Information	5
Dimensions	5
Speed, Capacities and Weight	5
Accommodations	5
Hull and Deck Information	5
Engine Information	6
PHOTOS	7
Enclosed Windlass, S/S Anchor	7
Custom Tow Eye	7
Bow Seat	7
Bow Seating	7
Starboard Side Seat Up	7
Starboard Side Seat Down	7
Starboard Side Seat Down	8
Forward Seat Storage	8
Forward Under Deck Storage	8
Forward Well W/Macerator	8
One Piece Windshield	8
Forward Console Seating	8
Forward Console	9
Wide Walkways	9
Helm Area	9
Helm Seat Bolster Position	9
Helm Seat Position	9
Aft Hardtop	9
Helm Area	10

Helm	10
Helm	10
Helm Area	10
Helm Glovebox	10
Helm Area	10
Console Storage	11
Console Storage	11
Console Storage	11
Touchscreen Furuno	11
Yamaha Gauge	11
Hardtop Forward	11
Hardtop, Aft	12
Inside Console	12
Console VHF & Stereo	12
Console Sink/Shower	12
Console Electrical Panel	12
Console Dead Lights	12
Starboard Sliding Door	13
Starboard Sliding Door	13
Starboard Sliding Door	13
Sliding Door Closed	13
Telescoping Swim Ladder	13
Aft Seats Folded	13
Aft Seats Deployed	14
Optional Transom Door	14
Transom Live Well	14
Night Lighting	14
Night Lighting	14
Night Lighting	14

Toilet System	15
Battery Compartment	15
Clean Bilge, Sunshade Supports	15
Engines Fully Above Water	15
Engines Always Covered	15
Transom	15
Tender	16
Pampered Life	16
Great Side Entry Door	16
Jan 2014 Hull Construction Looking Forward	16
Jan 2014 Hull Construction Aft	16
Jan 2014 Beefy Transom Section	17
Jan 2014 Deck Piece Looking Forward	17
Jan 2014 Deck Piece Looking Aft	17
CONTACTS	18
Contact details	18
Telephones	18
Office hours	18
Address	18

SPECIFICATIONS

Basic Information

Category: Boats

Sub Category: Center Console

Model Year: 2014

Year Built: 2014

Dimensions

LOA: 32' 6" (9.91mm)

Beam: 10.66

Min Draft: 2' 4" (0.71mm)

Max Draft: 2' 6" (0.76mm)

Speed, Capacities and Weight

Cruise Speed: 32 Knots Kts. (37 MPH)

Max Speed: 43 Knots Kts. (49 MPH)

Gross Tonnage: 6 Pounds

Water Capacity: 41 Gallons

Holding Tank: 10 Gal Gallons

Fuel Capacity: 280 Gal Gallons

Accommodations

Total Heads: 1

Hull and Deck Information

Hull Material: Fiberglass

Deck Material: Fiberglass

Hull Configuration: Deep Vee

Hull Designer: Belzona

Exterior Designer: Belzona

Interior Designer: Belzona

Engine Information

Engines: 2

Manufacturer: Yamaha

Engine Type: Outboard

Fuel Type: Gas

PHOTOS

Enclosed Windlass, S/S Anchor



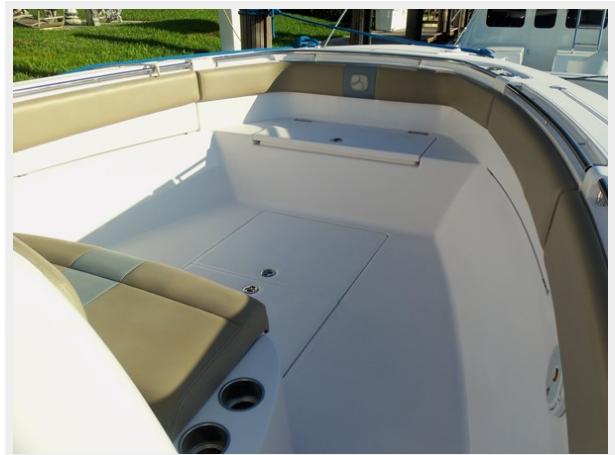
Custom Tow Eye



Bow Seat



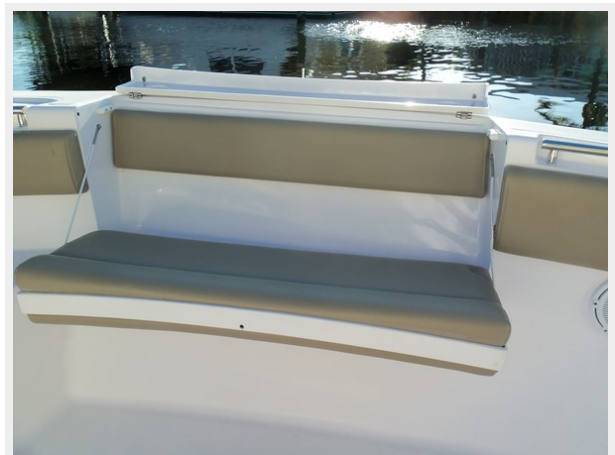
Bow Seating



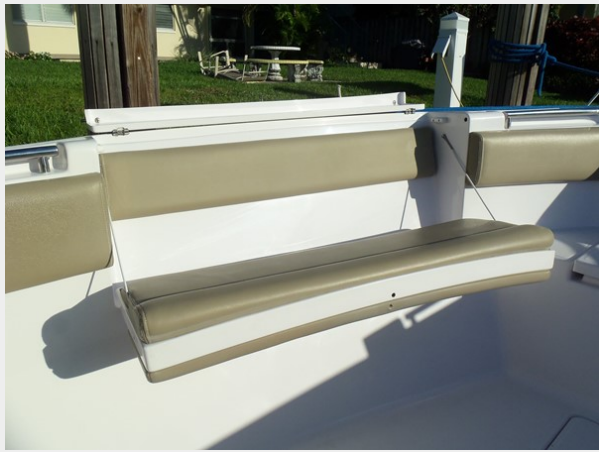
Starboard Side Seat Up



Starboard Side Seat Down



Starboard Side Seat Down



Forward Seat Storage



Forward Under Deck Storage



Forward Well W/Macerator



One Piece Windshield



Forward Console Seating



Forward Console



Wide Walkways



Helm Area



Helm Seat Bolster Position



Helm Seat Position



Aft Hardtop



Helm Area



Helm



Helm



Helm Area



Helm Glovebox



Helm Area



Console Storage



Console Storage



Console Storage



Touchscreen Furuno



Yamaha Gauge



Hardtop Forward



Hardtop, Aft



Inside Console



Console VHF & Stereo



Console Sink/Shower



Console Electrical Panel



Console Dead Lights



Starboard Sliding Door



Starboard Sliding Door



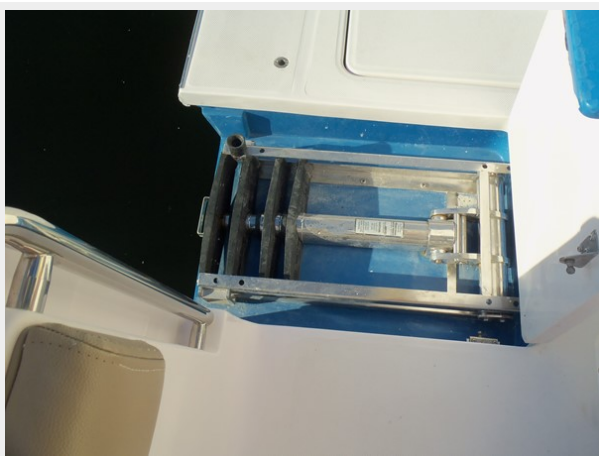
Starboard Sliding Door



Sliding Door Closed



Telescoping Swim Ladder



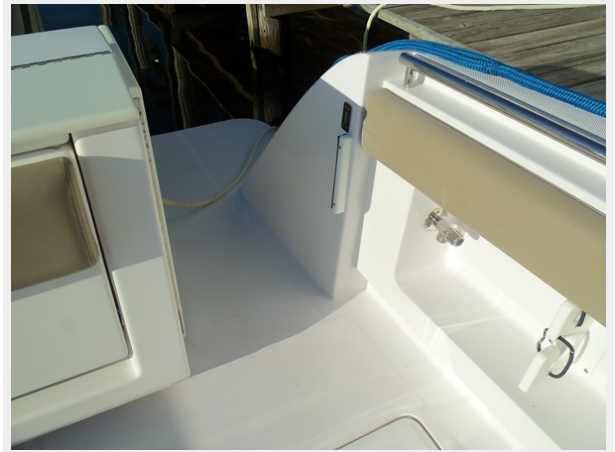
Aft Seats Folded



Aft Seats Deployed



Optional Transom Door



Transom Live Well



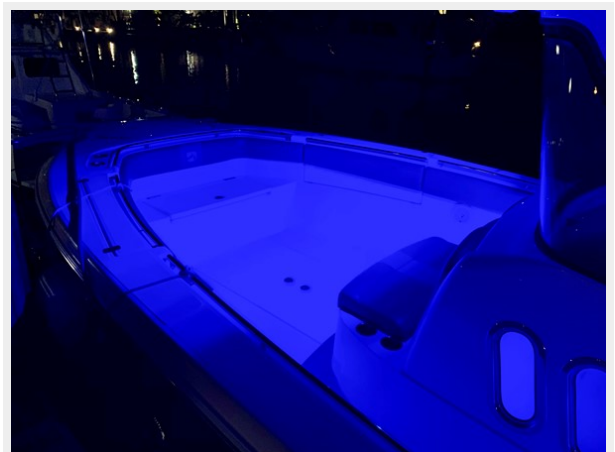
Night Lighting



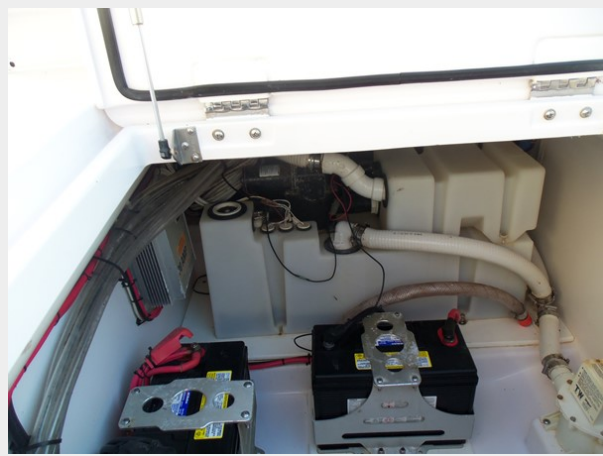
Night Lighting



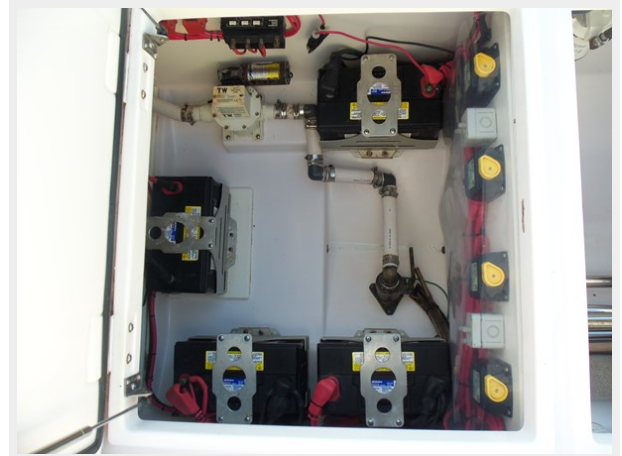
Night Lighting



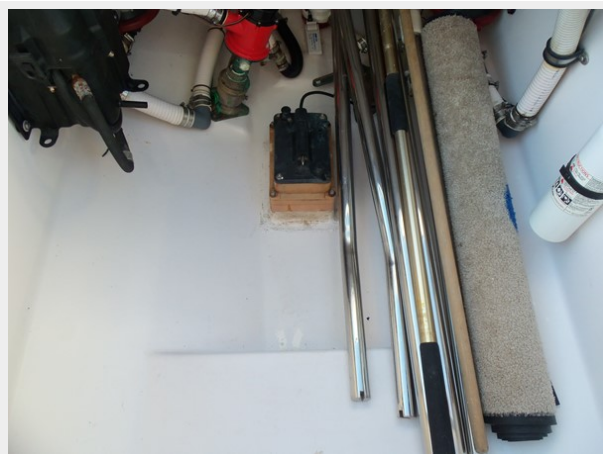
Toilet System



Battery Compartment



Clean Bilge, Sunshade Supports



Engines Fully Above Water



Engines Always Covered



Transom



Tender



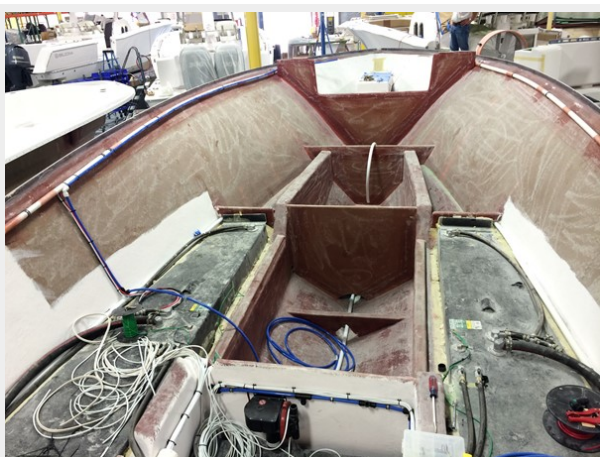
Pampered Life



Great Side Entry Door



Jan 2014 Hull Construction Looking Forward



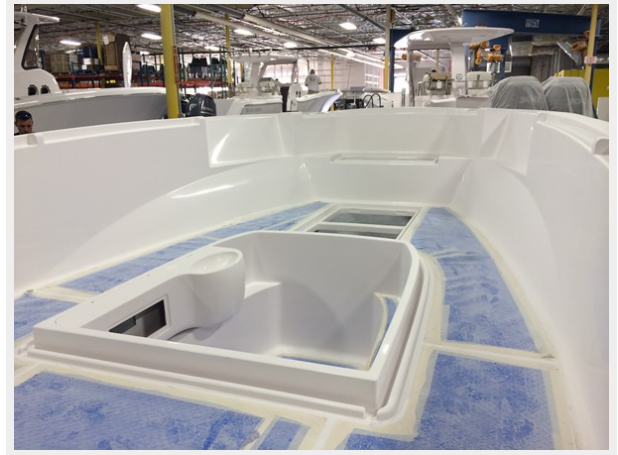
Jan 2014 Hull Construction Aft



Jan 2014 Beefy Transom Section



Jan 2014 Deck Piece Looking Forward



Jan 2014 Deck Piece Looking Aft



CONTACTS

Andrey Shestakov, leading yacht broker of the sales department of Shestakov Yacht Sales Inc. Shestakov Yacht Sales Inc., the official representative of the Miami/Fort Lauderdale FL headquarters.

Contact details

Email: andrey@shestakovyachtsales.com

Web: shestakovyachtsales.com/en/

Telephones

USA: +1(954)274-4435

Office hours

Monday – Saturday: **9:00 - 21:00** EDT

Sunday: **closed**

Address



Harbour Towne Marina, 850 NE 3rd St,
STE 213, Dania, FL 33004