

CAROLINA WIND — HATTERAS



Builder: HATTERAS

Year Built: 1989

Model: Motor Yacht

Price: PRICE ON APPLICATION

Location: United States

LOA: 78' 0" (23.77m)

Beam: 18' 2" (5.54m)

Max Draft: 5' 5" (1.65m)

Our experienced yacht broker, Andrey Shestakov, will help you choose and buy a yacht that best suits your needs **Carolina Wind — HATTERAS** from our catalogue. Presently, at Shestakov Yacht Sales Inc., we have a wide variety of yachts available on our sale's list. We also work in close contact with all the big yacht manufacturers from all over the world.

If you would like to buy a yacht **Carolina Wind — HATTERAS** or would like help answering any questions concerning purchasing, selling or chartering a yacht, please call **+1(954)274-4435**

TABLE OF CONTENTS

TABLE OF CONTENTS	2
SPECIFICATIONS	4
Overview	4
Basic Information	4
Dimensions	4
Speed, Capacities and Weight	4
Accommodations	4
Hull and Deck Information	5
Engine Information	5
DETAILED INFORMATION	6
Exterior	6
Flybridge	6
Electronics	6
Accommodations	7
Audio & Visual Equipment	7
Galley	7
Mechanical	7
Electrical	7
Fire Fighting and Safety Gear	8
Exclusions	8
Disclaimer	9
PHOTOS	10
Screenshot_20191111-122529_Gallery	10
20180316_140328	10
20180316_140827	10
20180316_141039	10
20180228_123527	10
20180316_141049	10

20171120_111124	11
20171120_111029	11
20171113_162458	11
20171113_162523	11
20171113_162552	11
20171113_162512	11
20171113_162627	11
20171113_162634	11
20171113_162536	12
20171113_162652	12
20171113_162711	12
20171113_162614	12
20171113_162620	12
20171113_162704	12
20171113_162718	12
20171113_162645	12
20171113_162723	13
CONTACTS	14
Contact details	14
Telephones	14
Office hours	14
Address	14

SPECIFICATIONS

Overview

The owner searched the east coast for two years before buying "Carolina Wind." She is the best bang for the buck in her class. The unique bar/salon makes her great for entertaining, living aboard or cruising. This yacht has the owner living space of a 120 footer. Upper deck sports a four bar area with large seating. The galley has full size appliances and sports an induction cook top which is like cooking with gas but it's electric. Large king size bed in Master with walk-in closet. Queen VIP Layout Midship, Twin Bunks Stateroom, Over-Under Forward Bunk, Mid Ship Day Head. She is located in Charleston, SC and is easy to show with 24 hours notice. If you're looking for a wide body loaded yacht in this size, "Carolina Wind" is a must-see!

Basic Information

Category: Motor Yacht

Sub Category: Cockpit

Model Year: 1989

Year Built: 1989

Country: United States

Dimensions

LOA: 78' 0" (23.77m)

Beam: 18' 2" (5.54m)

Max Draft: 5' 5" (1.65m)

Speed, Capacities and Weight

Displacement: 108000 Pounds

Water Capacity: 702 Gallons

Holding Tank: 210 Gallons

Fuel Capacity: 11230 Gallons

Accommodations

Total Cabins: 4

Hull and Deck Information

Hull Material: Fiberglass

Hull Finish: Fiberglass

Engine Information

Engines: 2

Manufacturer: General Motors

Model: 8122 7400

DETAILED INFORMATION

Exterior

- Cored molded fiberglass decks w/ non-skid
- Safety lines: Stainless steel wire w/ vinyl over + teak handrails & stainless steel stanchions
- Stainless steel Bow pulpit
- 60 lb. "Suncor" stainless steel Anchor
- "Galley Maid" Windlass

Flybridge

- Seating: Double helm chair, aft of helm to port and starboard.
- Wet bar on centerline aft of the helm
- Operational "KitchenAid" Icemaker
- Tan Bimini Top
- Stainless Steel Bimini Frame

Electronics

Lower Helm

- Ritchie Compass
- Robertson AP9 MKII Autopilot
- Garmin 5212 72 mile Radar
- Garmin 5212 GPS
- Garmin 4208 GPS - Chart Plotter
- Garmin VHF 100
- Raymarine ST40 Depth finder
- Speed log
- Data Marine Wind gauge

Upper Helm

- Ritchie Compass
- Robertson F200 remote Autopilot
- Garmin 5212 72 mile
- Garmin 5212 GPS
- Garmin 4208 GPS - Chart Plotter
- Icom IC-M506 VHF
- Raymarine ST40 Depth finder
- Speed log

Accommodations

- Staterooms: 4
- Heads: 4
- Vinyl Ceilings
- Carpeted floors

Audio & Visual Equipment

- TVs: Sylvania, Magnavox, Dynex & Visio
- DVD: Dynex, Samsung & Sony
- Stereos: Fusion, Mitsubishi, Sony & Onkyo AV surround receiver

Galley

- Four burner "Samsung" Induction Electric Stovetop
- "Samsung" Electric Oven - Convection oven inside
- "General Electric" Microwave
- "General Electric" Refrigeration and Freezer
- "Whirlpool" Dishwasher
- "Water Makers Inc." Watermaker
- "Whirlpool" stack type washer dryer
- Granite Galley counter

Mechanical

- ZF Transmission
- Four blade Nibral 38" x 24" Propeller

Electrical

Generators

Aft

- Kohler 23EKOD2

- Serial #: SGM32GJSS
- 279 Hours
- 22 Kilowatts

Forward

- ONAN
- 20.0MDL4-3R/30366B
- Serial # L870947714
- 552.5 Hours
- 20 Kilowatts

Shore Power

- 250 ft 50 AMP Power Cord
- 225 ft 50 AMP Power Cord

Miscellaneous

- "Cruise Air" Direct Expansion Type A/C
- Reverse Cycle Heating

Fire Fighting and Safety Gear

Fire Extinguisher & Bilge Pumps

- 2 x "Kidde" Fixed Fire System in Engine Room & Generator Space
- Inspected April 2017
- Manuel release with pulls at wheelhouse helm
- Operational Bilge Alarms

Life Jackets

- Six Adult Type "II"
- Four Adult Type "III"
- One Life Ring

Flares

USCG Approved "Weems & Plath" SOS Distress Light Electronic Flare with Distress

Exclusions

Owner's personal belongings.

Disclaimer

The Company offers the details of this vessel or yacht in good faith but cannot guarantee or warrant the accuracy of this information nor warrant the condition of the vessel. A buyer should instruct his representatives, agents, or his surveyors, to investigate such details as the buyer desires validated. This vessel or yacht is offered subject to prior sale, price change, or withdrawal without notice.

PHOTOS

Screenshot_20191111-122529_Gallery

20180316_140328



20180316_140827



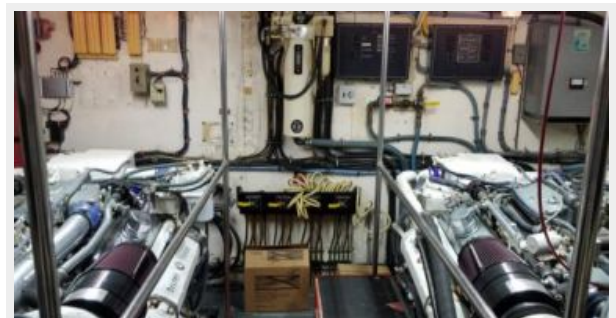
20180316_141039



20180228_123527



20180316_141049



20171120_111124



20171120_111029



20171113_162458



20171113_162523



20171113_162552



20171113_162512



20171113_162627



20171113_162634



20171113_162536



20171113_162652



20171113_162711



20171113_162614



20171113_162620



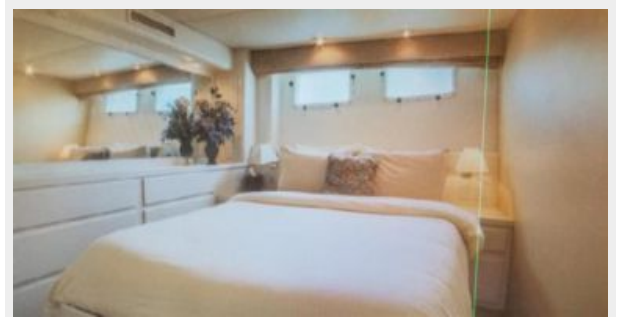
20171113_162704



20171113_162718



20171113_162645



20171113_162723



CONTACTS

Andrey Shestakov, leading yacht broker of the sales department of Shestakov Yacht Sales Inc. Shestakov Yacht Sales Inc., the official representative of the Miami/Fort Lauderdale FL headquarters.

Contact details

Email: andrey@shestakovyachtsales.com

Web: shestakovyachtsales.com/en/

Telephones

USA: +1(954)274-4435

Office hours

Monday – Saturday: **9:00 - 21:00** EDT

Sunday: **closed**

Address



Harbour Towne Marina, 850 NE 3rd St,
STE 213, Dania, FL 33004