

## BEAR 2 — ENDEAVOUR



**Builder:** ENDEAVOUR

**Year Built:** 2000

**Model:** Catamaran

**Price:** PRICE ON APPLICATION

**Location:** United States

**LOA:** 36' 0" (10.97m)

**Beam:** 15' 0" (4.57m)

**Min Draft:** 2' 10" (0.86m)

Our experienced yacht broker, Andrey Shestakov, will help you choose and buy a yacht that best suits your needs **Bear 2 — ENDEAVOUR** from our catalogue. Presently, at Shestakov Yacht Sales Inc., we have a wide variety of yachts available on our sale's list. We also work in close contact with all the big yacht manufacturers from all over the world.

If you would like to buy a yacht **Bear 2 — ENDEAVOUR** or would like help answering any questions concerning purchasing, selling or chartering a yacht, please call **+1(954)274-4435**

---

# TABLE OF CONTENTS

---

TABLE OF CONTENTS	2
SPECIFICATIONS	3
Overview	3
Basic Information	3
Dimensions	3
Speed, Capacities and Weight	3
Accommodations	4
Hull and Deck Information	4
Engine Information	4
DETAILED INFORMATION	5
Overview	5
Exclusions	5
Disclaimer	5
PHOTOS	6
CONTACTS	12
Contact details	12
Telephones	12
Office hours	12
Address	12

# SPECIFICATIONS

---

## Overview

---

WOW! Extremely well equipped cruising catamaran. Well cared for, one owner, lift kept. Perfect coastal and Bahama cruiser. The Endeavour Cat 36 is a very accommodating 3 berth sailing catamaran with a generous salon, galley down and a large enclosed cockpit/helm. BEAR 2 comes with lots of optional equipment as well as a 9.5 AB tender and a 15 HP Yamaha electric start outboard. Some of the factory installed upgrades are: Upgraded 29 HP Diesel Engines, 380 watts of solar, Water Maker and water purification system, 3 blade folding prop, Spinnaker Sail, 1500 watt inverter, Swim platform, 5kw generator, Vacuflush head, Refrigerator/Freezer, Dinghy Davit System, Satellite Dish, List goes on and on.....

## Basic Information

---

**Category:** Catamaran

**Model Year:** 2000

**Year Built:** 2000

**Country:** United States

## Dimensions

---

**LOA:** 36' 0" (10.97m)

**Beam:** 15' 0" (4.57m)

**Min Draft:** 2' 10" (0.86m)

**Clearance:** 46' 6" (14.17m)

**MFG Length:** 36' 0" (10.97m)

## Speed, Capacities and Weight

---

**Displacement:** 9250 Pounds

**Water Capacity:** 90 Gallons

**Fuel Capacity:** 60 Gallons

---

## Accommodations

---

**Total Cabins:** 3

**Total Berths:** 3

**Total Heads:** 1

---

## Hull and Deck Information

---

**Hull Material:** Fiberglass

---

## Engine Information

---

**Engines:** 2

**Manufacturer:** Volvo Penta

**Model:** MD2030

**Engine Type:** Inboard

**Fuel Type:** Diesel

---

# DETAILED INFORMATION

---

## Overview

---

The on and on...

- Custom Sun Shades
- Hot & Cold Deck Shower
- 1600 BTU Cruisair
- Raytheon Tridata
- Raytheon Autopilot with Remote
- Raytheon Radar
- Autohelm Wind monitor
- 6 Interior Fans and 1 at Helm
- Anchor Windlass
- Full Cockpit Enclosure with Screens
- Folding Cockpit Table
- Cockpit Cushions
- Bow Saltwater Washdown
- Oil Change Pumps
- Grill
- Masthead Cell Phone Antenna
- Upgraded Mattress x3
- "Shade Tree" awning
- New Isinglass in 2018
- Convertible Settee(makes into queen berth)

## Exclusions

---

Owner's personal belongings.

## Disclaimer

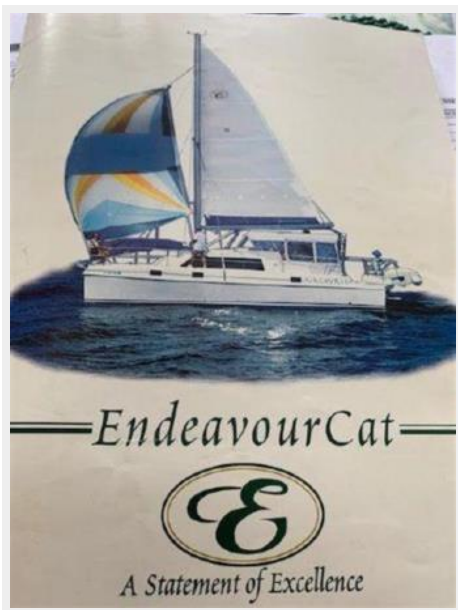
---

The Company offers the details of this vessel or yacht in good faith but cannot guarantee or warrant the accuracy of this information nor warrant the condition of the vessel. A buyer should instruct his representatives, agents, or his surveyors, to investigate such details as the buyer desires validated. This vessel or yacht is offered subject to prior sale, price change, or withdrawal without notice.

# PHOTOS

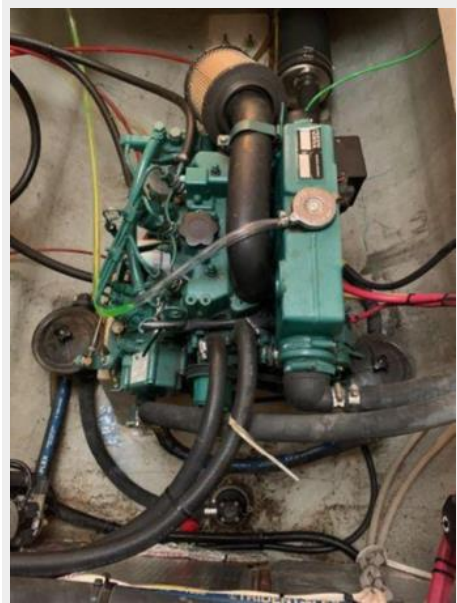
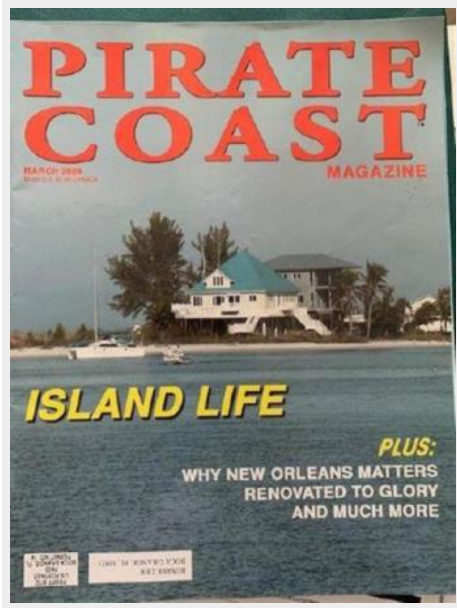


















# CONTACTS

---

Andrey Shestakov, leading yacht broker of the sales department of Shestakov Yacht Sales Inc. Shestakov Yacht Sales Inc., the official representative of the Miami/Fort Lauderdale FL headquarters.

## Contact details

---

Email: [andrey@shestakovyachtsales.com](mailto:andrey@shestakovyachtsales.com)

Web: [shestakovyachtsales.com/en/](http://shestakovyachtsales.com/en/)

## Telephones

---

USA: +1(954)274-4435

## Office hours

---

Monday – Saturday: **9:00 - 21:00** EDT

Sunday: **closed**

## Address

---



Harbour Towne Marina, 850 NE 3rd St,  
STE 213, Dania, FL 33004