

MISTRESS — HUNTER



Builder: HUNTER

Year Built: 1993

Model: Cruising/Racing Sailboat

Price: PRICE ON APPLICATION

Location: United States

LOA: 40' 0" (12.19m)

Beam: 12' 5" (3.78m)

Max Draft: 4' 10" (1.47m)

Our experienced yacht broker, Andrey Shestakov, will help you choose and buy a yacht that best suits your needs **Mistress — HUNTER** from our catalogue. Presently, at Shestakov Yacht Sales Inc., we have a wide variety of yachts available on our sale's list. We also work in close contact with all the big yacht manufacturers from all over the world.

If you would like to buy a yacht **Mistress — HUNTER** or would like help answering any questions concerning purchasing, selling or chartering a yacht, please call **+1(954)274-4435**

TABLE OF CONTENTS

TABLE OF CONTENTS	2
SPECIFICATIONS	3
Overview	3
Basic Information	3
Dimensions	4
Speed, Capacities and Weight	4
Accommodations	4
Hull and Deck Information	4
Engine Information	4
DETAILED INFORMATION	5
Overview	5
Exclusions	6
Disclaimer	6
PHOTOS	7
CONTACTS	17
Contact details	17
Telephones	17
Office hours	17
Address	17

SPECIFICATIONS

Overview

1993 Hunter 40.5 " Mistress" located in Fairhaven NY. Price reduced to \$67,750. "Recent upgrades sets this Hunter 40.5 Legend apart from others. Bluetooth nav display with wifi and new Bluetooth stereo. Both can be interfaced with smart phone or tablet. Both heads are recently replaced 2018. Both AC/heat units replaced 2016, and updated Adler Barbour refrigeration units 2017. "Great boat at a great price"

Broker's comments:

Hunter's Legend Series has a great reputation for styling, performance and rugged construction. From the spacious cockpit to her bright open interior, this yacht exemplifies what Hunter Marine is famous for.

Above deck, her powerful rig, swept back spreaders and large mainsail enhance her performance, while the bulb-wing keel keeps her stable and shallow in draft.

The cockpit is large and great for entertaining, with lots of seating space, comfortable high backs to the coamings, well-laid-out and organized. Stern rail seats and a large cockpit table add to the environment. The walk-through transom provides easy access for swimming and to your dinghy.

Below decks, the two staterooms and heads make having another couple along fun and provide enough privacy for everyone to feel comfortable. Reverse-cycle air conditioning and heat keeps dockside living comfortable and the huge dinette will seat six to eight people with ease. The galley has great counter space, storage and has top and front-loading refrigerator access and a top-loading freezer. Great family cruiser with many amenities.

Basic Information

Category: Cruising/Racing Sailboat

Model Year: 1993

Year Built: 1993

Country: United States

Dimensions

LOA: 40' 0" (12.19m)

LWL: 35' 4" (10.77m)

Beam: 12' 5" (3.78m)

Max Draft: 4' 10" (1.47m)

MFG Length: 40' 0" (12.19m)

Speed, Capacities and Weight

Displacement: 20000 Pounds

Water Capacity: 105 Gallons

Holding Tank: 40 Gallons

Fuel Capacity: 40 Gallons

Accommodations

Total Cabins: 2

Total Heads: 2

Hull and Deck Information

Hull Material: Fiberglass

Engine Information

Engines: 1

Manufacturer: Yanmar

Model: 4JH2E

Engine Type: Inboard

Fuel Type: Diesel

DETAILED INFORMATION

Overview

Accommodations

- Two Staterooms
- 2 Heads
- 3 Showers (one on deck)

Equipment

- 1 Electric bilge pump
- 1 Manual bilge pump
- 2 Marine heads
- Outside Equipment/Extras
- Swimming ladder
- Solar panel - Trickle Charger for Battery
- Mainsail cover
- Rocna 20 Anchor with Windlass

Hunter Spars & Rigging/Sails

- Doyle Roller Furling 130% Headsail (Refurbished)
- UK MainSail (Refurbished)
- Spinnaker and Sock
- Spinnaker Pole
- Boom Vang

Instruments/Electronics

- Raymarine Auto Pilot
- Autohelm, Wind Speed, Depth, Apparent Wind.
- Standard Marine VHF with AIS
- Stereo Bluetooth Enables.
- Compass
- Raymarine Radar
 - 2 House Gel Batteries, 1 Engine Starting Battery.
 - 2200 watt inverter generator Yamaha
 - Refrigeration/Freezer

- Microwave
- 3 Burner stove with oven
- Large double stainless sink
- Reverse osmoses filtration system
- Mast Crutches for self-storage of mast
- Dinghy: 10 ft inflatable with fiberglass hull
- 9.9 Evinrude motor with gas tank

Galley:

Deck Hardware

- Molded Anchor Locker with Rode Securing Point
- Stainless Steel Bow Pulpit
- Stainless Steel Swim Ladder
- Self-Bailing Cockpit
- Storage for Halyard Lines in Cockpit
- Walk-Through Transom
- Closed Cell Cockpit Cushions

Extras:

- Halyards replaced 3 2017

Exclusions

Owner's personal belongings.

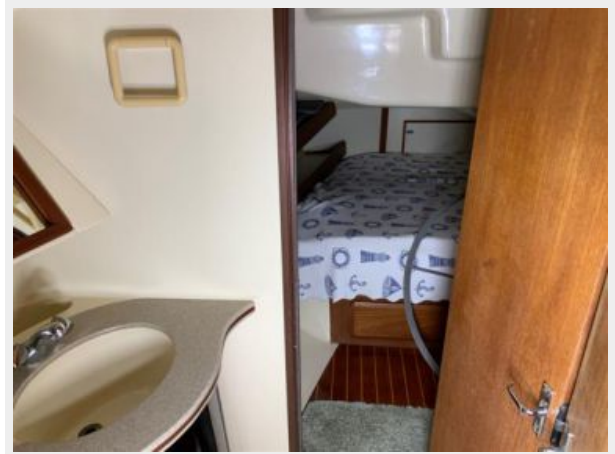
Disclaimer

The Company offers the details of this vessel or yacht in good faith but cannot guarantee or warrant the accuracy of this information nor warrant the condition of the vessel. A buyer should instruct his representatives, agents, or his surveyors, to investigate such details as the buyer desires validated. This vessel or yacht is offered subject to prior sale, price change, or withdrawal without notice.

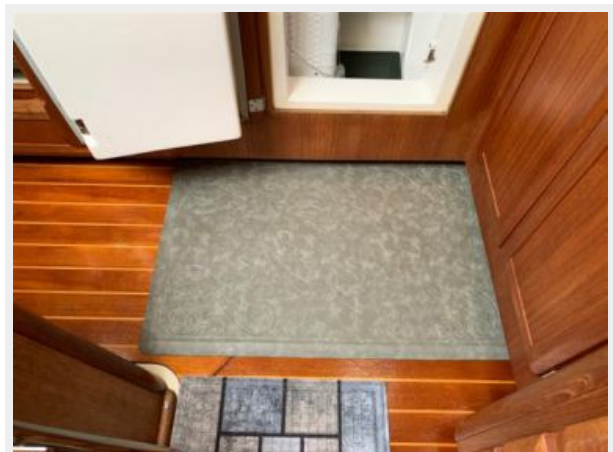
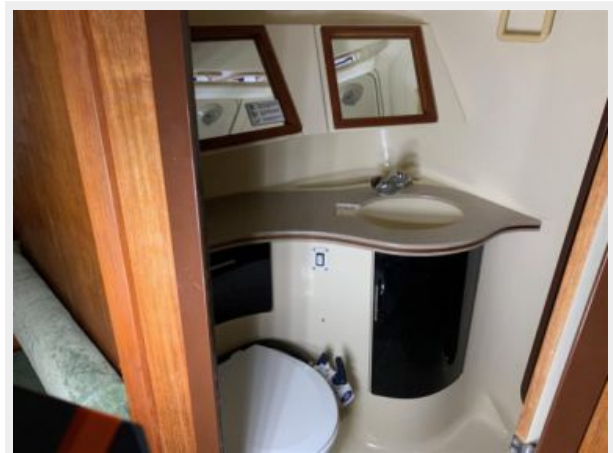
PHOTOS





















CONTACTS

Andrey Shestakov, leading yacht broker of the sales department of Shestakov Yacht Sales Inc. Shestakov Yacht Sales Inc., the official representative of the Miami/Fort Lauderdale FL headquarters.

Contact details

Email: andrey@shestakovyachtsales.com

Web: shestakovyachtsales.com/en/

Telephones

USA: +1(954)274-4435

Office hours

Monday – Saturday: **9:00 - 21:00** EDT

Sunday: **closed**

Address



Harbour Towne Marina, 850 NE 3rd St,
STE 213, Dania, FL 33004