

## HIGH FIVE — MOODY



**Builder:** MOODY

**Year Built:** 1989

**Model:** Center Cockpit

**Price:** PRICE ON APPLICATION

**Location:** United States

**LOA:** 41' 8" (12.7mm)

**Beam:** 13.33

**Min Draft:** 6' (1.83mm)

**Cruise Speed:** 7 Knots Kts. (8 MPH)

**Max Speed:** 7 Knots Kts. (8 MPH)

Our experienced yacht broker, Andrey Shestakov, will help you choose and buy a yacht that best suits your needs **High Five — MOODY** from our catalogue. Presently, at Shestakov Yacht Sales Inc., we have a wide variety of yachts available on our sale's list. We also work in close contact with all the big yacht manufacturers from all over the world.

If you would like to buy a yacht **High Five — MOODY** or would like help answering any questions concerning purchasing, selling or chartering a yacht, please call **+1(954)274-4435**

---

# TABLE OF CONTENTS

---

TABLE OF CONTENTS	2
SPECIFICATIONS	3
Overview	3
Basic Information	9
Dimensions	9
Speed, Capacities and Weight	10
Accommodations	10
Hull and Deck Information	10
Engine Information	10
PHOTOS	11
lustrous gelcoat	11
facing aft	11
chainplates/ side deck	11
organized manuals	11
refrigerator/ freezer	12
helm	12
cockpit seating	12
suite electronics over companionway	13
electric winch	13
CONTACTS	14
Contact details	14
Telephones	14
Office hours	14
Address	14

---

# SPECIFICATIONS

---

## Overview

---

### Accommodations

Three cabin layout is as follows: V-Berth ensuite cabin forward with storage lockers. The fwd marine head is aft to starboard with storage across to port. The main salon has a U-shaped dinette to starboard and a straight settee to port with storage outboard. The galley is aft to port with a door to access the aft head. The sit down, forward facing nav station is to starboard. Aft of the galley is a walkway with 2 bunk pilot berths. The aft cabin, which can be accessed from either port or starboard, has a centerline berth with ensuite heads and loads of storage throughout.

All upholstery is red sunbrella Ultrasuede, complimented by contrasting pillows and tasteful window treatments. ONBOARD INTERIORS of Marblehead was awarded best in class for the refit of 'High Five' . Salon has teak and holly sole

The forward facing Nav Station is upholstered in matching red material which is waterproof for a navigators foulies.

Forward guest cabin and aft owners cabin and pilot berths are in matching red ultrasuede. Fore and aft cabins are newly carpeted in light grey waterproof Berber carpet.

9 Berths Total: 6 Berths in 3 cabins (2 Double and 2 Single) PLUS 3 Berths in Salon (1 Double and 1 Single).

- Heads: 2 Heads with washbasin and Shower (both ensuite) both head systems rebuilt w/ hoses, clamps valves 2017
- Deck Shower at transom new 2017
- Teak joinerwork throughout.
- Headroom: 6'4"

### Cockpit

All seating areas upgraded to Dutch compressed cork covering. affords non slip, cushioned seating area. Snap in custom cushions also included.

Cockpit sole is teak.

Teak Cockpit folding table also surfaced with Dutch compressed cork, no burns , no slips, no stains Really ingenious.

Dodger w/ grabrail and Bimini

2 Lewmar 52 ST 2sp primaries

New Lewmar #46 ST2SP secondaries to handle furler also very useful for snugging into slip

2 Lewmar 8 for spinnaker

Lewmar electric winch to handle SELDEN in mast furler

New Furano suite above companionway

New restored Perkins instrument faceplate

2 New shore power 'smart plug' connector

Lewmar folding wheel allows easy passage

## **Galley**

Eno propane stove and oven 2017

LPG detector all LPG hoses replaced 2017

Seafrost freezer/ refrigerator rebuilt by Seafrost 2017 Engine driven or from batteries Serviced annually by Seafrost technician

Twin deep STS sinks

H/C pressure water

Foot pump fresh water

Ample dry storage outboard and under

6 gal Raritan HW heater

GFCI outlets

## **Sails and Canvas**

Neil Pryde 135 Genoa 2009

Mainsail

Selden in mast furler new guts 2017

Furlex furler for Genoa

IYE traveler aft of cockpit

Mast furling bearing replaced 2017

Lewmar electric winch for furling main.

rigid vang with rope control

Dyform standing rigging also known as compacted 30% stronger, 25% more stable than conventional wire.

Standing rigging 2012

all running rigging new or excellent

2 lewmar winches on mast for halyards

Dbl spreader rig

Spinnaker pole

## **Deck**

Anchor locker CQR 35 plough anchor 5/16' chain and rode

Lewmar 100 electric windlass new 2017

Sloop rig

5 New Lewmar hatchlights

4 dorades

New companionway lucite board 2018

Sts braces at mast

Center side decks recored port and starboard 2017 see notes elsewhere on page

Chainplates exposed and checked 2017

Keel bolts replaced 2013 galvanic isolator installed to prevent electrolysis from shore power

Scoop stern with two storage lockers folding STS swim ladder

H/C pressure shower at transom

## **Electrical**

3 group 31 AGM house batteries

2 engine starter battery

---

Martec Rutland 913 wind generator

3 Ganz solar panels

Pro star 30 charger for solar

Xantrex pro sine 2.0 inverter charger **Electronics**

At helm;

Recent Ritchie compass

Complete suite Furuno radar/ GPS / AIS and instruments

Furuno MFD8 Navnet 3D Multifunction display chartplotter/ radar/ ais overlay

FA50 Class B AIS sender / receiver

Furuno Nav pilot 711C auto pilot

PG 700 heading sensor

F170 Apparent wind speed angle F170 Depth F170 speed/ log All over companionway

At Nav station; IC MS-502 VHF IC M802 SSB Handheld Furano GP3 Clarion M624 entertainment CA radar detector

Seafrost thermostats

### **Additional Information**

Side decks recored port and starboard 2017

Chainplates exposed, removed & checked 2016

Keel bolts replaced 2012

Extensive head restoration 2016

8' West marine Dinghy and 2HP mercury motor.

Winslow 6 person raft uninspected.

Bottom Paint 2018

Buffed waxed topsides 2018

## From the Yard

Brewers honors individual yards for remarkable accomplishments and publishes those in "Tidewater" a quarterly publication.

From the spring of 2017. Brewers Hawthorne Cove Marina , Salem Ma.

" A MOODY 425 THAT WENT THROUGH SURVEY THREE YEARS AGO HAS BEEN IN THE SHOP AT SALEM UNDERGOING SEVERAL ANNUAL PROJECTS. THE KEEL BOLTS HAVE BEEN REPLACED AND THE STEERING SYSTEM WAS REPAIRED WITH LEWMAR REPLACEMENT PARTS AS WELL AS CUSTOM FABRICATED PARTS TO MAKE THE SYSTEM FUNCTIONAL AND WHOLE. THIS WINTER, THE DECK REPAIRS AND CHAINPLATE SERVICING WAS UNDERTAKEN TO REMEDY POTENTIAL LEAKS AND POTENTIAL WET CORE. SOME OF THE ADDITIONAL WORK INCLUDED HEAD SYSTEM OVERHAULS AND UPGRADING THE REFRIGERATION SYSTEM AND NEW ELECTRONICS.

Photos of above work available.

**Disclaimer** The Company offers the details of this vessel in good faith but cannot guarantee or warrant the accuracy of this information nor warrant the condition of the vessel. A buyer should instruct his agents, or his surveyors, to investigate such details as the buyer desires validated. This vessel is offered subject to prior sale, price change, or withdrawal without notice.

Forward guest cabin and aft owners cabin and pilot berths are in matching red ultrasuede. Fore and aft cabins are newly carpeted in light grey waterproof Berber carpet.

9 Berths Total: 6 Berths in 3 cabins (2 Double and 2 Single) PLUS 3 Berths in Salon (1 Double and 1 Single).

- Heads: 2 Heads with washbasin and Shower (both ensuite) both head systems rebuilt w/ hoses, clamps valves 2017
- Deck Shower at transom new 2017
- Teak joinerwork throughout.
- Headroom: 6'4" **Accommodations**

Three cabin layout is as follows: V-Berth ensuite cabin forward with storage lockers. The fwd marine head is aft to starboard with storage across to port. The main salon has a U-shaped dinette to starboard and a straight settee to port with storage outboard. The galley is aft to port with a door to access the aft head. The sit down, forward facing nav station is to starboard. Aft of the galley is a walkway with 2 bunk pilot berths. The aft cabin, which can be accessed from either port or starboard, has a centerline berth with ensuite

heads and loads of storage throughout.

All upholstery is red sunbrella Ultrasuede, complimented by contrasting pillows and tasteful window treatments. ONBOARD INTERIORS of Marblehead was awarded best in class for the refit of 'High Five' . Salon has teak and holly sole

The forward facing Nav Station is upholstered in matching red material which is waterproof for a navigators foulies.

Forward guest cabin and aft owners cabin and pilot berths are in matching red ultrasuede. Fore and aft cabins are newly carpeted in light grey waterproof Berber carpet.

9 Berths Total: 6 Berths in 3 cabins (2 Double and 2 Single) PLUS 3 Berths in Salon (1 Double and 1 Single).

- Heads: 2 Heads with washbasin and Shower (both ensuite) both head systems rebuilt w/ hoses, clamps valves 2017
- Deck Shower at transom new 2017
- Teak joinerwork throughout.
- Headroom: 6'4"

## **Galley**

Eno propane stove and oven 2017

LPG detector all LPG hoses replaced 2017

Seafrost freezer/ refrigerator rebuilt by Seafrost 2017 Engine driven or from batteries Serviced annually by Seafrost technician

Twin deep STS sinks

H/C pressure water

Foot pump fresh water

Ample dry storage outboard and under

6 gal Raritan HW heater

GFCI outlets

## **Cockpit**

All seating areas upgraded to Dutch compressed cork covering. affords non slip, cushioned seating area. Snap in custom cushions also included.

Cockpit sole is teak.



Teak Cockpit folding table also surfaced with Dutch compressed cork, no burns , no slips, no stains Really ingenious.

Dodger w/ grabrail and Bimini

2 Lewmar 52 ST 2sp primaries

New Lewmar #46 ST2SP secondaries to handle furler also very useful for snugging into slip

2 lewmar 8 for spinnaker

Lewmar electric winch to handle SELDEN in mast furler

New Furano suite above compainonway

New restored Perkins instrument faceplate

2 New shore power 'smart plug' connector

Lewmar folding wheel allows easy passage

•

## Basic Information

---

**Category:** Center Cockpit

**Sub Category:** Center Cockpit

**Model Year:** 1989

**Year Built:** 1989

**Country:** United States

## Dimensions

---

**LOA:** 41' 8" (12.7mm)

**LWL:** 34' 4" (10.46mm)

**Beam:** 13.33

**Min Draft:** 6' (1.83mm)

---

## Speed, Capacities and Weight

---

**Cruise Speed:** 7 Knots Kts. (8 MPH)

**Max Speed:** 7 Knots Kts. (8 MPH)

**Water Capacity:** 90 Gallons

**Holding Tank:** 40 Gal Gallons

**Fuel Capacity:** 60 Gal Gallons

---

## Accommodations

---

**Total Cabins:** 2

**Total Berths:** 6

**Sleeps:** 6

**Total Heads:** 2

---

## Hull and Deck Information

---

**Hull Material:** Composite Fiberglass

---

## Engine Information

---

**Engines:** 1

**Manufacturer:** Perkins Diesel

**Fuel Type:** Diesel

# PHOTOS

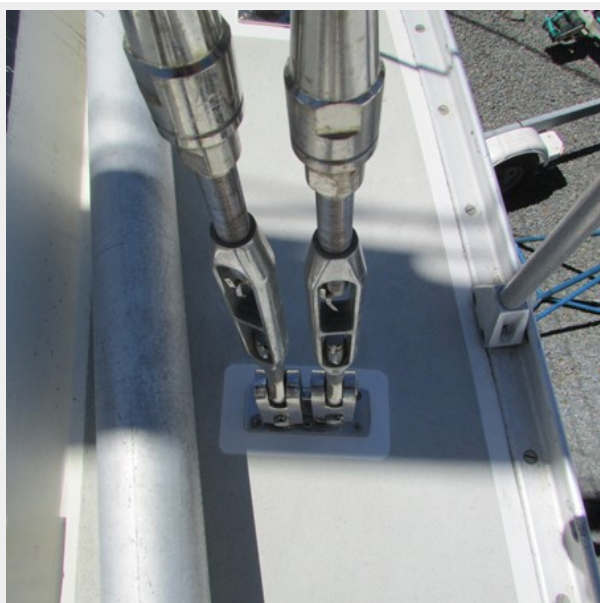
**lustrous gelcoat**



**facing aft**



**chainplates/ side deck**



**organized manuals**



refrigerator/ freezer



helm



cockpit seating



**suite electronics over companionway**



**electric winch**





# CONTACTS

---

Andrey Shestakov, leading yacht broker of the sales department of Shestakov Yacht Sales Inc. Shestakov Yacht Sales Inc., the official representative of the Miami/Fort Lauderdale FL headquarters.

## Contact details

---

Email: [andrey@shestakovyachtsales.com](mailto:andrey@shestakovyachtsales.com)

Web: [shestakovyachtsales.com/en/](http://shestakovyachtsales.com/en/)

## Telephones

---

USA: +1(954)274-4435

## Office hours

---

Monday – Saturday: **9:00 - 21:00** EDT

Sunday: **closed**

## Address

---



Harbour Towne Marina, 850 NE 3rd St,  
STE 213, Dania, FL 33004