

ROBYN'S NEST — POST



Builder: POST

Year Built: 2003

Model: Center Console

Price: PRICE ON APPLICATION

Location: United States

LOA: 56' 0" (17.07m)

Beam: 16' 11" (5.16m)

Min Draft: 5' 6" (1.68m)

Max Draft: 5' 6" (1.68m)

Cruise Speed: 31 Kts. (36 MPH)

Max Speed: 39 Kts. (45 MPH)

Our experienced yacht broker, Andrey Shestakov, will help you choose and buy a yacht that best suits your needs **Robyn's Nest — POST** from our catalogue. Presently, at Shestakov Yacht Sales Inc., we have a wide variety of yachts available on our sale's list. We also work in close contact with all the big yacht manufacturers from all over the world.

If you would like to buy a yacht **Robyn's Nest — POST** or would like help answering any questions concerning purchasing, selling or chartering a yacht, please call **+1(954)274-4435**

TABLE OF CONTENTS

TABLE OF CONTENTS	2
SPECIFICATIONS	5
Overview	5
Basic Information	5
Dimensions	5
Speed, Capacities and Weight	5
Accommodations	6
Hull and Deck Information	6
Engine Information	6
DETAILED INFORMATION	7
Salon	7
Galley and Dining	7
Accommodations	8
Cockpit and Deck	9
Fly Bridge	10
Engines and Mechanical	11
Electrical Equipment	12
Broker's Comments and Remarks	13
Exclusions	13
Disclaimer	13
PHOTOS	14
IMG_0453	14
IMG_0464	14
IMG_0450	14
IMG_0458	14
IMG_0459	15
IMG_0456	15
IMG_0428	15

Copy of IMG_0426	15
IMG_0438	15
IMG_0440	15
IMG_0429	16
IMG_0431	16
IMG_0430	16
IMG_9361	16
IMG_6259	17
IMG_9362	17
IMG_6258	17
IMG_9360	17
DSC00071	18
DSC00070	18
DSC00060	18
DSC00061	18
DSC00062	18
DSC00063	18
DSC00067	19
DSC00068	19
DSC00058	19
Post 56 #1	19
Post 56#2 (1)	19
IMG_0689	19
IMG_0690	20
IMG_0691	20
IMG_0693	20
IMG_0698	20
IMG_0699	20
IMG_0700	20

IMG_0836	21
IMG_0840	21
IMG_0841	21
IMG_0843	21
IMG_0844	22
56-floorplan	22
CONTACTS	23
Contact details	23
Telephones	23
Office hours	23
Address	23

SPECIFICATIONS

Overview

Only eight 56' Post Convertible Flybridge Sport Fisherman were ever built. "Robyn's Nest" stands out as the best in its class of any brand with great speed and fuel economy. Never fished, like new condition, custom full paint in 2017, she has the look and feel of a much more expensive custom built yacht. This very special, light use low hour boat has been pampered and cared for with an open checkbook.

October 2020 UPDATE: New bottom paint, zincs, strainers, reconditioned props October 2020!

Basic Information

Category: Center Console

Model Year: 2003

Year Built: 2003

Refit Year: 2017

Refit Type: Custom Painting "Star and Stripes" Hull and Matterhorn White Superstructure

Country: United States

Vessel Top: Hardtop

Fly Bridge: Yes

Dimensions

LOA: 56' 0" (17.07m)

Beam: 16' 11" (5.16m)

Min Draft: 5' 6" (1.68m)

Max Draft: 5' 6" (1.68m)

Clearance: 18' 6" (5.64m)

MFG Length: 55' 11" (17.04m)

Speed, Capacities and Weight

Cruise Speed: 31 Kts. (36 MPH)

Max Speed: 39 Kts. (45 MPH)

Displacement: 66830 Pounds

Water Capacity: 250 Gallons

Holding Tank: 80 Gallons

Fuel Capacity: 1200 Gallons

Accommodations

Total Cabins: 3	Total Berths: 6
Sleeps: 6	Total Heads: 2

Hull and Deck Information

Hull Material: Fiberglass	Deck Material: Composite Fiberglass
Hull Configuration: Modified V-Hull	Hull Color: Star and Stripes Blue
Hull Finish: Stainless Steel	Hull Designer: Post Yachts

Engine Information

Engines: 2	Manufacturer: MAN
Model: D2842LE404	Engine Type: Inboard
Fuel Type: Diesel	

DETAILED INFORMATION

Salon

Entering the interior of the yacht from the cockpit up the steps through the sliding door is the open and inviting main salon. The gorgeous mat finished teak walls, woodworking and cabinetry starts there and continues throughout the entire yacht. As you step in, the flooring is new soft carpet underfoot which also goes throughout the vessel, tinted windows on the aft bulkhead and the length of the open area port and starboard with tastefully chosen treatments, fabric panels, shades and Duette inset blinds. Immediately upon entering the salon to port is the luxurious large leather U-shaped sofa with copious storage and a teak coffee table also with storage inside. To starboard is a bar with a hand rubbed teak varnished countertop with cabinet under, a comfortable swivel barrel chair, on same side is a corner console aft with the main electrical panel above and U-Line icemaker underneath the console' teak varnished countertop.

Audio Visual Equipment, Features and Highlights:

50" Flat Screen TV

Bose Surround Sound 5:1 Home Theater System

Panasonic Blu Ray

Marantz 1602 Amp

U-Line Icemaker

Air Conditioning with controls

New carpeting with canvas carpet runners

Large leather u-shaped sofa with storage

Custom coffee table with storage inside

Swivel Barrel Chair

Tinted windows

Window treatments with custom fit Duette blinds by Hunter Douglas

Galley and Dining

Walking forward from the salon situated to port is the spacious U shaped open aft facing galley

with large corian countertop featuring 6 Sub Zero drawer units underneath. Facing forward is another corian countertop with inset sink, a Princess 3 burner countertop stove with a Sharp Carousel Microwave/Convection oven in cabinet above with ample drawer and cabinet storage underneath. Cabinets above have tremendous amounts of storage. The galley has a gorgeous high gloss teak and holly sole. Immediately across from the galley, to starboard is the U shaped Dinette/dining salon with gloss finished teak table and leather seating with storage under. Looking forward to starboard is the 50" Flat Screen TV with Panasonic Blu Ray, Bose Surround Sound 5:1 Home Theater system and Marantz 1602 Amp in the entertainment console. Leading forward from there are the steps down to the companionway with owner's and guest staterooms and accommodations.

Galley & Laundry, Highlights and Features:

(4) Sub Zero 700 BR Refrigerator Drawers

(2) Sub Zero 700 BF Freezer Drawers

Princess 3 burner electric counter cooktop

Sharp Carousel Microwave/Convection oven

Clothes Washer and Dryer, Kenmore stack unit (companionway)

Large leather built-in dinette seating with storage under

Hand rubbed varnish Teak dining table

Teak and Holly sole

Accommodations

Walking forward in the companionway on the lower deck to port is the Master ensuite stateroom with a walkaround queen bed with Handcraft System 5 mattress, ample drawer, locker and large cedar lined hanging closet storage, 24" Flat Screen TV, a private ensuite head with shower, vanity with sink and a teak and holly sole.

Highlights: Air Conditioning digital controls, 24" Flat Screen TV, Stereo w/ speakers, mirror, carpeting, reading lights, under queen bed hinged storage, upholstered headboard

To starboard is one guest cabin with over and under berths, drawers and a cedar lined hanging closet.

Highlights: Digital air conditioning controls, reading lights, carpeting

Forward is another guest cabin with twin sized lower berth to port and a single upper berth to starboard with ample drawer, locker storage and large cedar lined hanging closet. An adjoining, semi-private full head has a vanity with sink, shower and a teak and holly sole also serves as the day head with another door from the companionway.

Highlights: Digital air conditioning controls, carpeting, reading lights, private door to full service adjoining head w/ shower and vanity sink, overhead hatch w/ screen and blackout shade

Cockpit and Deck

The cockpit: is very spacious and since the yacht has never been fished, it currently serves as an outdoor area for cocktails and gatherings of family and friends. However, if a future owner desires, this huge cockpit is perfect for battling the world's biggest game fish.

The deck: side decks to the bow has a toe rail, welded aluminum rail and stanchions from amidships all the way to the bow, grab rails alongside the superstructure gaining access to the bow with bowsprit, anchor pulpit and windlass.

Features include:

Insulated salon step box

Bait Freezer

Cockpit sink

Freshwater washdown outlet

Raw Water washdown outlet

(2) Removable deck fish boxes with hinged lids

Transom fish box (baitwell not hooked up)

Cabinet with top loading freezer/refrigerator

Tackle center with 4 drawers

(6) rod rocket launcher (Flybridge aft rail)

(4) rod holders

Tuna door with lifting rail in transom

Welded aluminum bow rail and stanchions

Aluminum handrails cabin mounted

Stainless steel cleats and chocks

(3) 15X15" hatches on foredeck

Bow pulpit with electric windlass

Anchor with chain and line

Fly Bridge

The flybridge is spacious and comfortable with a Post custom fiberglass hardtop with polished aluminum frame and full EZ2CY clear enclosure. The massive helm console provides all the space needed for easy access to an excellent array of flush mounted electronics and navigation equipment protected from the elements by clear acrylic covers on stainless steel piano hinges. The impressive console features a pedestal captain's station with Glendinning Palm Beach single lever controls with trolling valves and all instrument and MAN engine gauges. There are (2) Pompanette Platinum series helm chairs with multipoint seating adjustment and support providing optimal comfort underway. There is an L-shaped bench seating forward of the console situated to starboard with another bench seat to port (with built-in 20 gallon ice box just aft). Ample seating for all guests that's comfortable with seat and backrest cushions in excellent condition.

Highlights Equipment and Electronics

(2) Pompanette Platinum Series helm chairs

Helm pedestal with Glendinning Palm Beach single lever controls

MAN engine instrumentation and gauges w/ pyrometers for all four turbos

Emergency Fuel shut off valves

Furuno 96nm Color LCD Radar (FR-8252) w/ 6' array and 25KW transmitter

Furuno Rd-30 Depth Sounder

Garmin GPSMAP 7612xsv w/ Airmar transducer and dual GT51-THP transducers

Garmin GPS 742

Simrad Autopilot AP48 NAC-3 Corepack w/ Precision 9 heading sensor

(2) Icom M-502 VHF HW157 cable w/ remote command mic

Vessel systems monitor (Halon fire system, bilge pumps, blower, genset, (2) fuel tanks, exhaust

temp

Hardtop with EZ2CY 3 side enclosure

Bennett Trim Tab controls

ACR Remote Spotlight

Navigation lights

Spreader lights

Bridge electrical breaker panel

Freshwater outlet

(6) Rod holders

Engines and Mechanical

Access to the engine room is from the cockpit. The engine room is Awlgrip painted white, clean dry and orderly with aluminum Diamond Plate removable hatches, Dri-Deck flooring tiles and acoustical and thermal insulation. There is 110v fluorescent and 24v lighting overhead.

Propulsion and Equipment:

Twin 12 cylinder MAN D2842LE404 1300 horsepower diesel freshwater cooled heat exchanger inboard engines with approx 712 original hours

(2) ZF BW 165AP4 transmission Gear ratio 2:1 with Morse controls & Trolling valves

Engine Synchronizers

(2) stainless steel shafts 3" DIA w/ shaft brushes and Tides Marine Dripless shaft seals (with spares on shaft)

(2) Propellers VEEM 5 blade 32.5X47

(2) Crash emergency engine pumps (port and starboard)

(4) automatic bilge pumps

Power-assist hydraulic steering (new pump and rudder packing 2018)

Cruisair (4) Zone reverse cycle air conditioning system with dual strainers, (new) dual Oberdorfer pumps

Glendinning Cablemaster

Oil X-change-R lube oil transfer system

(2) Vacuflush heads (rebuilt)

Well X-tron accumulator with pump and macerator

Halon 1301

(2) Bilge blowers

(4) Racor Filters with canisters and drip pans

Engine emergency fuel shutoff valve (bridge)

Acoustic and thermal insulation (engineroom)

Electrical Equipment

A/C Electrical System 220/110 Volt

ONAN 21.5KW generator with insulated hush box (Approx 500 original hours)

Two (port and starboard) 50 amp connections, One Glendenning 50' Cablemaster power reel

D/C Electrical System 24 volt

(6) Batteries with water fill systems

(3) Guest main battery switches w/ parallels

(2) Charles Industries 500 Series battery chargers, 24V 60 and 50 amp

Broker's Comments and Remarks

"Robyn's Nest" is a gorgeous very pampered private yacht that has rarely been fished and never chartered. With only two owners since new, she has only been used for summer seasons in the Northeast and Mid-Atlantic. She' been kept in bristol condition with no expense spared. Only eight 56' Post Convertible Flybridge Sport Fisherman were ever built.

"Robyn's Nest" stands out as the best in its class for any brand, not just Post Yachts of similar or even later vintages. This yacht boasts excellent performance with great speed and fuel economy and appears "like new" in many ways with a custom full paint of hull, deck and superstructure in the winter of 2017/2018, it has the look and feel of a much more expensive and newer custom built yacht. The current owner also added Veem props and updated important navigation and electronics such as the radar and other mechanical features such as redundant Air Conditioning cooling pumps etc... This is a true "Turn Key" yacht that is ready to cruise in comfort and style. This very special, light use, low hour boat is a "must see" for a selective and discriminating cruising yachtsman or game fisherman (just add the outriggers).

Exclusions

Owner's personal belongings.

Disclaimer

The Company offers the details of this vessel or yacht in good faith but cannot guarantee or warrant the accuracy of this information nor warrant the condition of the vessel. A buyer should instruct his representatives, agents, or his surveyors, to investigate such details as the buyer desires validated. This vessel or yacht is offered subject to prior sale, price change, or withdrawal without notice.

PHOTOS

IMG_0453



IMG_0464



IMG_0450



IMG_0458



IMG_0459



IMG_0456



IMG_0428



Copy of IMG_0426



IMG_0438



IMG_0440



IMG_0429



IMG_0431



IMG_0430



IMG_9361



IMG_6259



IMG_9362



IMG_6258



IMG_9360



DSC00071



DSC00070



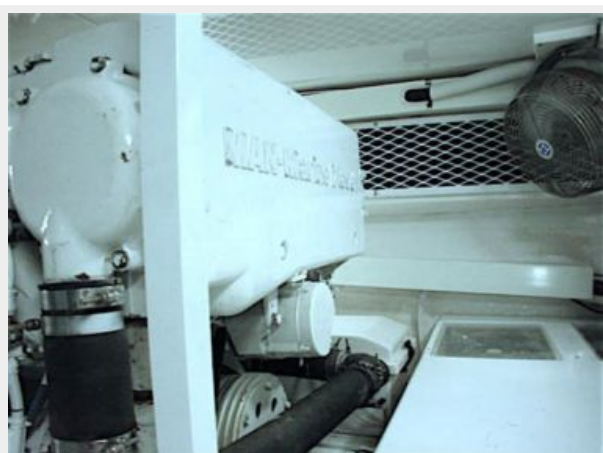
DSC00060



DSC00061



DSC00062



DSC00063



DSC00067



DSC00068



DSC00058



Post 56 #1



Post 56#2 (1)



IMG_0689



IMG_0690



IMG_0691



IMG_0693



IMG_0698



IMG_0699



IMG_0700



IMG_0836



IMG_0840



IMG_0841



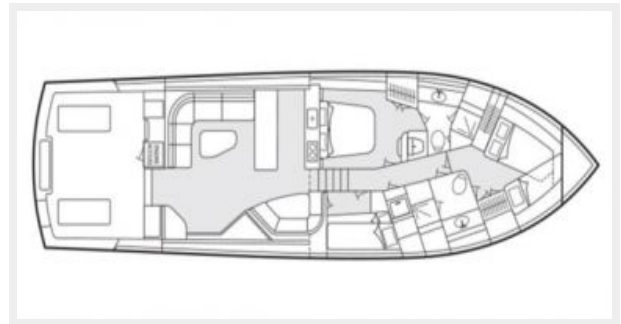
IMG_0843



IMG_0844



56-floorplan



CONTACTS

Andrey Shestakov, leading yacht broker of the sales department of Shestakov Yacht Sales Inc. Shestakov Yacht Sales Inc., the official representative of the Miami/Fort Lauderdale FL headquarters.

Contact details

Email:
andrey@shestakovyachtsales.com

Web: shestakovyachtsales.com/en/

Telephones

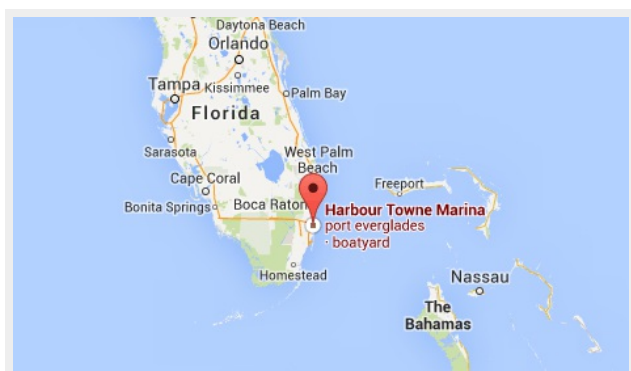
USA: **+1(954)274-4435**

Office hours

Monday – Saturday: **9:00 - 21:00 EDT**

Sunday: **closed**

Address



Harbour Towne Marina, 850 NE 3rd St,
STE 213, Dania, FL 33004