

SCOUT — KADEY KROGEN



Builder: KADEY KROGEN

Year Built: 1982

Model: Trawler Yacht

Price: PRICE ON APPLICATION

Location: United States

LOA: 42' 0" (12.80m)

Beam: 15' 0" (4.57m)

Max Draft: 4' 7" (1.40m)

Our experienced yacht broker, Andrey Shestakov, will help you choose and buy a yacht that best suits your needs **Scout — KADEY KROGEN** from our catalogue. Presently, at **Shestakov Yacht Sales Inc.**, we have a wide variety of yachts available on our sale's list. We also work in close contact with all the big yacht manufacturers from all over the world.

If you would like to buy a yacht **Scout — KADEY KROGEN** or would like help answering any questions concerning purchasing, selling or chartering a yacht, please call **+1(954)274-4435**

TABLE OF CONTENTS

TABLE OF CONTENTS	2
SPECIFICATIONS	5
Overview	5
Basic Information	5
Dimensions	5
Speed, Capacities and Weight	5
Accommodations	5
Hull and Deck Information	6
Engine Information	6
DETAILED INFORMATION	7
More information	7
Exclusions	7
Disclaimer	7
PHOTOS	8
7294039_20191125095549419_1_XLARGE	8
7294039_20191125095529835_1_XLARGE	8
7294039_20191125095534033_1_XLARGE	8
7294039_20191125095532322_1_XLARGE	8
7294039_20191125095532895_1_XLARGE	8
7294039_20191125095548274_1_XLARGE	8
7294039_20191125095543145_1_XLARGE	9
7294039_20191125095547119_1_XLARGE	9
7294039_20191125095548851_1_XLARGE	9
7294039_20191125095542581_1_XLARGE	9
7294039_20191125095531590_1_XLARGE	9
7294039_20191125095554339_1_XLARGE	9
7294039_20191125095550106_1_XLARGE	10
7294039_20191125095537038_1_XLARGE	10

7294039_20191125095553030_1_XLARGE	10
7294039_20191125095530981_1_XLARGE	10
7294039_20191125095534629_1_XLARGE	10
7294039_20191125095540703_1_XLARGE	10
7294039_20191125095538239_1_XLARGE	11
7294039_20191125095542036_1_XLARGE	11
7294039_20191125095547678_1_XLARGE	11
7294039_20191125095553662_1_XLARGE	11
7294039_20191125095539652_1_XLARGE	11
7294039_20191125095543700_1_XLARGE	11
7294039_20191125095541435_1_XLARGE	12
7294039_20191125095528652_1_XLARGE	12
7294039_20191125095536497_1_XLARGE	12
7294039_20191125095551641_1_XLARGE	12
7294039_20191125095552282_1_XLARGE	13
7294039_20191125095546343_1_XLARGE	13
7294039_20191125095551097_1_XLARGE	13
7294039_20191125095539097_1_XLARGE	13
7294039_20191125095535145_1_XLARGE	13
7294039_20191125095544514_1_XLARGE	13
7294039_20191125095555555_1_XLARGE	14
7294039_20191125095535906_1_XLARGE	14
7294039_20191125095533496_1_XLARGE	14
7294039_20191125095540175_1_XLARGE	14
7294039_20191125095545765_1_XLARGE	14
7294039_20191125095529279_1_XLARGE	14
7294039_20191125095537615_1_XLARGE	15
7294039_20191125095554943_1_XLARGE	15
CONTACTS	16

Contact details	16
Telephones	16
Office hours	16
Address	16

SPECIFICATIONS

Overview

Refitted over the past three years to serve as a surveillance, communication, and/or search and rescue vessel. Over \$500K invested. Side and down view sonar. Satellite TV and internet. Radar. Autopilot. Cell phone extender. Three interfaced GPS maps. Fore and aft FLIR thermal night cameras with video recorders. SSB and VHF radios. Gyro stabilizer has been tested in 10+ foot swells. Bow and stern thrusters. Water maker. Two generators. Engine room and mast mounted docking cameras. Life raft, and much more. Call or email for full listing of options and upgrades.

Basic Information

Category: Trawler Yacht

Sub Category: Long Range Cruiser

Model Year: 1982

Year Built: 1982

Country: United States

Fly Bridge: Yes

Cockpit: Yes

Dimensions

LOA: 42' 0" (12.80m)

Beam: 15' 0" (4.57m)

Max Draft: 4' 7" (1.40m)

Speed, Capacities and Weight

Displacement: 40000 Pounds

Water Capacity: 360 Gallons

Holding Tank: 40 Gallons

Fuel Capacity: 700 Gallons

Accommodations

Total Cabins: 2

Hull and Deck Information

Hull Material: Fiberglass

Engine Information

Engines: 1

Manufacturer: Perkins

Model: 6.3544

Engine Type: Inboard

Fuel Type: Diesel

DETAILED INFORMATION

More information

Accommodations Number of double berths: 2 Number of heads: 2
Electronics Computer GPS VHF Navigation center DVD player CD player Plotter Radio Autopilot TV set
Depth sounder Compass Radar VCR Inside Equipment Stern thruster Microwave oven Hot water Heating
Electric head Electric bilge pump Battery charger Air conditioning Fresh water maker Refrigerator
Bow thruster Electrical Equipment Generator Inverter Shore power inlet Electrical Circuit: 110V
Outside Equipment/Extras Liferaft Electric windlass

Exclusions

Owner's personal belongings.

Disclaimer

The Company offers the details of this vessel or yacht in good faith but cannot guarantee or warrant the accuracy of this information nor warrant the condition of the vessel. A buyer should instruct his representatives, agents, or his surveyors, to investigate such details as the buyer desires validated. This vessel or yacht is offered subject to prior sale, price change, or withdrawal without notice.

PHOTOS

7294039_20191125095549419_1_XLARGE



7294039_20191125095529835_1_XLARGE



7294039_20191125095534033_1_XLARGE



7294039_20191125095532322_1_XLARGE



7294039_20191125095532895_1_XLARGE



7294039_20191125095548274_1_XLARGE



7294039_20191125095543145_1_XLARGE



7294039_20191125095547119_1_XLARGE



7294039_20191125095548851_1_XLARGE



7294039_20191125095542581_1_XLARGE



7294039_20191125095531590_1_XLARGE



7294039_20191125095554339_1_XLARGE



7294039_20191125095550106_1_XLARGE

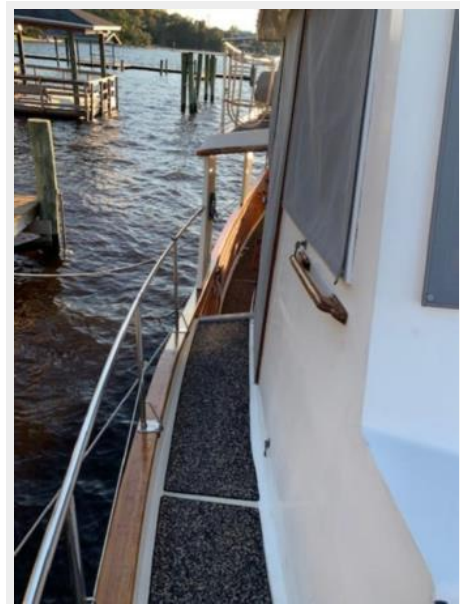


7294039_20191125095537038_1_XLARGE



7294039_20191125095553030_1_XLARGE

7294039_20191125095530981_1_XLARGE



7294039_20191125095534629_1_XLARGE



7294039_20191125095540703_1_XLARGE



7294039_20191125095538239_1_XLARGE



7294039_20191125095542036_1_XLARGE



7294039_20191125095547678_1_XLARGE



7294039_20191125095553662_1_XLARGE



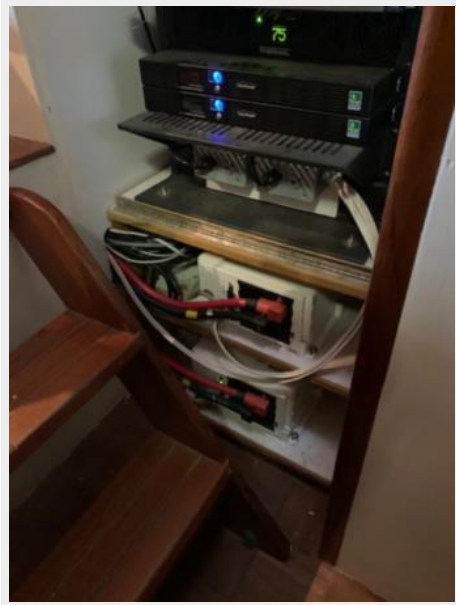
7294039_20191125095539652_1_XLARGE



7294039_20191125095543700_1_XLARGE



7294039_20191125095541435_1_XLARGE



7294039_20191125095528652_1_XLARGE



7294039_20191125095536497_1_XLARGE



7294039_2019112509551641_1_XLARGE



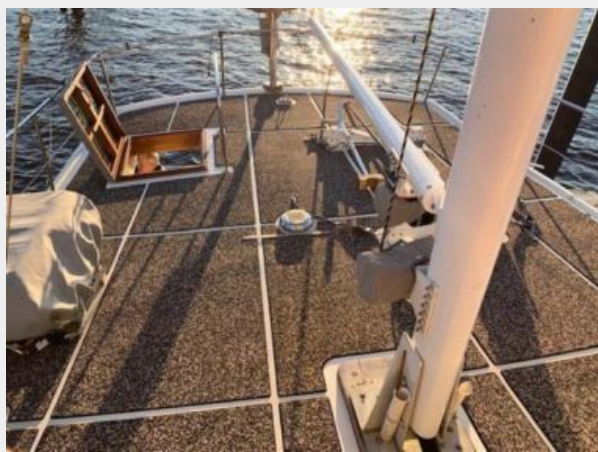
7294039_20191125095552282_1_XLARGE



7294039_20191125095546343_1_XLARGE



7294039_20191125095551097_1_XLARGE



7294039_20191125095539097_1_XLARGE



7294039_20191125095535145_1_XLARGE



7294039_20191125095544514_1_XLARGE



7294039_20191125095555555_1_XLARGE



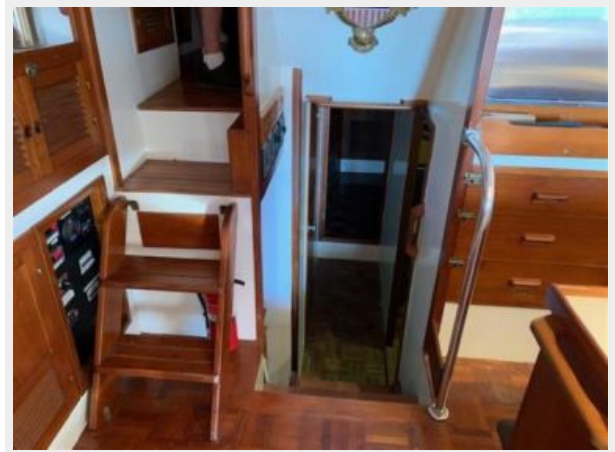
7294039_20191125095535906_1_XLARGE



7294039_20191125095533496_1_XLARGE

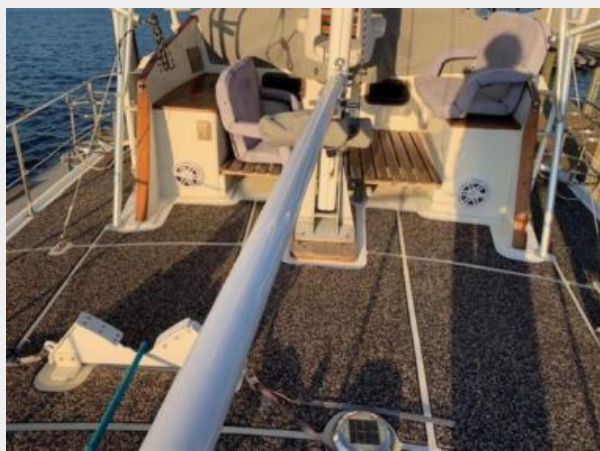


7294039_20191125095540175_1_XLARGE



7294039_20191125095545765_1_XLARGE

7294039_20191125095529279_1_XLARGE



7294039_20191125095537615_1_XLARGE



7294039_20191125095554943_1_XLARGE



CONTACTS

Andrey Shestakov, leading yacht broker of the sales department of Shestakov Yacht Sales Inc. Shestakov Yacht Sales Inc., the official representative of the Miami/Fort Lauderdale FL headquarters.

Contact details

Email: andrey@shestakovyachtsales.com

Web: shestakovyachtsales.com/en/

Telephones

USA: +1(954)274-4435

Office hours

Monday – Saturday: **9:00 - 21:00** EDT

Sunday: **closed**

Address



Harbour Towne Marina, 850 NE 3rd St,
STE 213, Dania, FL 33004