

HERITAGE — PERINI NAVI



Builder: PERINI NAVI

Year Built: 2006

Model: Sloop

Price: PRICE ON APPLICATION

Location: Italy

LOA: 148' 8" (45.30m)

Beam: 29' 8" (9.04m)

Min Draft: 13' 7" (4.14m)

Max Draft: 30' 0" (9.14m)

Cruise Speed: 10 Kts. (12 MPH)

Max Speed: 14 Kts. (16 MPH)

Our experienced yacht broker, Andrey Shestakov, will help you choose and buy a yacht that best suits your needs **HERITAGE — PERINI NAVI** from our catalogue. Presently, at Shestakov Yacht Sales Inc., we have a wide variety of yachts available on our sale's list. We also work in close contact with all the big yacht manufacturers from all over the world.

If you would like to buy a yacht **HERITAGE — PERINI NAVI** or would like help answering any questions concerning purchasing, selling or chartering a yacht, please call **+1(954)274-4435**

TABLE OF CONTENTS

TABLE OF CONTENTS	2
SPECIFICATIONS	3
Overview	3
Basic Information	3
Dimensions	4
Speed, Capacities and Weight	4
Accommodations	4
Hull and Deck Information	4
Engine Information	4
DETAILED INFORMATION	5
DETAILED DESCRIPTION	5
Exclusions	16
Disclaimer	16
PHOTOS	17
CONTACTS	22
Contact details	22
Telephones	22
Office hours	22
Address	22

SPECIFICATIONS

Overview

Originally delivered in 2006 from the very well-known Perini Navi shipyard in Viareggio, Heritage incorporates excellent engineering by Perini Navi and her naval architecture is by the famed Ron Holland. She is also somewhat unusual in Perini terms, having been delivered to a fully custom design and owned by the same Owners ever since her launch.

Offering exhilarating sailing performance, Heritage cruises easily under engine at 10 knots, and partly because she has no flybridge and is considerably lighter than other Perinis of similar size, she is no slouch under sail with the ability to reach a top speed of approximately 14 knots under full sail with a favourable wind.

The unique custom designed interior features a very large main saloon with dining area, and below she offers accommodation for up to 12 guests thanks to her charter and family friendly five cabin layout (she is also commercially registered). One notable feature is the full beam Owner's cabin located aft which has two double beds on each side, ideal for comfortable passage-making. Design-wise the teak wood interior is somewhat nautical but light in colour and hard to dislike, and it provides a second Owner with a relatively blank canvas which would be very easy to personalise.

Outside, the decks and wide gangways feel uncluttered, and there is a huge sunbathing area located on the cockpit roof. The aft deck areas are also very spacious and provide a huge covered aft cockpit area with no less than three seating areas and a bar, all out of the sun and also well out of the way of the action while sailing so that guests can remain undisturbed. Further aft there is also a beach club/tender bay.

Always well maintained, Heritage has now served her purpose for her current Owners, who have priced her fairly so that a new Owner can take her onto new adventures. Viewing is highly recommended.

delivered in 2006 from the very well-known Perini Navi shipyard in Viareggio, Heritage incorporates excellent engineering by Perini Navi and her naval architecture is by the famed Ron Holland. She is also somewhat unusual in Perini terms, having been delivered to a fully custom design and owned by the same Owners ever since her launch.

Basic Information

Category: Sloop

Model Year: 2006

Year Built: 2006

Country: Italy

Dimensions

LOA: 148' 8" (45.30m)

LWL: 134' 11" (41.10m)

Beam: 29' 8" (9.04m)

Min Draft: 13' 7" (4.14m)

Max Draft: 30' 0" (9.14m)

Speed, Capacities and Weight

Cruise Speed: 10 Kts. (12 MPH)

Max Speed: 14 Kts. (16 MPH)

Displacement: 309 Pounds

Gross Tonnage: 309 Pounds

Water Capacity: 2007.7075952 Gallons

Fuel Capacity: 8189.333612 Gallons

Accommodations

Total Cabins: 4

Sleeps: 12

Crew Sleeps: 6

Hull and Deck Information

Hull Material: Steel

Deck Material: Teak

Hull Designer: Ron Holland

Exterior Designer: Ron Holland

Interior Designer: Perini Navi

Engine Information

Engines: 1

Manufacturer: Caterpillar

Model: C-32

Fuel Type: Diesel

DETAILED INFORMATION

DETAILED DESCRIPTION

```
#edmiston-espec { font-family: 'Helvetica Neue LT Std', 'Sans'; font-weight: 200; font-style:
normal; text-align: justify; text-justify: inter-word; line-height: 1.5em; color: #444; } #edmiston-
espec table { border-spacing: 0px; border-collapse: collapse; } #edmiston-espec td { text-align:
left; vertical-align: top; padding: 0px; margin: 0px; line-height: 1.5em; } #edmiston-espec th { text-
align: left; vertical-align: top; padding: 0px; margin: 0px; width: 5cm; } #edmiston-espec h1 { font-
family: 'Times New Roman','Serif'; color: #DB001E; } #edmiston-espec h2 { font-family: 'Times
New Roman','Serif'; color: #DB001E; } #edmiston-espec h3 { font-family: 'Times New
Roman','Serif'; color: #222; } #edmiston-espec ul { list-style: none; margin: 0; padding: 0 0 0 20px;
} #edmiston-espec li.bullet { list-style: disc; }
```

1. MAIN CHARACTERISTICS

TYPE	◦ Sailing Yacht
RIG	◦ Sloop
HULL	◦ Keel Centerboard
BUILDER	◦ Perini Navi
NAVAL ARCHITECT	◦ Ron Holland /Perini Navi
EXTERIOR DESIGN	◦ Ron Holland Design
INTERIOR DESIGN	◦ Perini Navi
YEAR	◦ 2006
CLASSIFICATION	◦ ABS+A1 Commercial yachting Service ISM;MINI;
CONSTRUCTION	◦ Steel Hull: AH 36, Aluminium Alloy Superstructure, ◦ 16mm Teak Decks, Keel: 5 m mobile drift in fiberglass
CREW	◦ 6
FLAG	◦ Portugal
ENGINE	◦ 1 x 1,400Hp CAT C32 (2006)
GT	◦ 309
NT	◦ 92
DISPLACEMENT	◦ 309 tons

2. DIMENSIONS

LOA	◦ 45.30m / 148'6"
LWL	◦ 41.10m / 135'
BEAM	◦ 9.04m / 39'6"
DRAFT	◦ 4.14m / 13' min ◦ 9.14m / 25'5" maximum draft with keel down

3. SPEED & RANGE UNDER POWER

MAXIMUM SPEED	◦ 14 knots @ 2,300rpm
----------------------	-----------------------

CRUISING SPEED ◦ 10 knots

RANGE ◦ 3,500nm

4. CAPACITIES

ACCOMMODATION ◦ 10+2 x Guest in 4/5 cabins + Studio

CREW ◦ 3 x Crew cabins

FUEL ◦ 31,000 litres / 8,190 US gallons in 3 tanks

DAY TANK ◦ 650 litres / 171 US gallons in 1 tank

FRESH WATER ◦ 7,600 litres / 2,007 US gallons in 2 tanks

LUBE OIL ◦ 400 litres / 105 US gallons

SLUDGE ◦ 400 litres / 105 US gallons in 1 tank

GREY / BLACK WATER ◦ 1,600 litres / 422 US gallons in 1 tank

5. ACCOMMODATION

The Owner's suite is located aft and has two King size beds and two bathrooms (one of which also has a Steam room). This cabin can either be used in luxury mode as one full beam Owner's suite with a choice of the two beds for passage making and a further owner's office studio to starboard.

Alternatively the owner's cabin can be divided into two cabins via a soundproofed sliding partition on the centreline. The starboard cabin then has the attached office/studio with a sofa bed which sleeps one adult or a perhaps a child (this sofa bed could also easily be made bigger if desired but please note that the studio cabin is not en suite and therefore not a standalone cabin per se).

There are three further guest cabins, one double and two twins, each with an extra Pullman bunk and all of which are en suite. In total there are 13 permanent guest berths and the sofa bed.

In the crew area there are 3 x twin crew cabins (all en suite) and a further Pullman bed located in the Laundry, for a maximum of 7 crew berths. There is also a comfortable crew mess area.

6. MECHANICAL EQUIPMENT

ENGINE ◦ Caterpillar C-32 1,044 kW at 2300 rpm

ENGINE HOURS ◦ Circa: 6,827 hours (July 2020)

GEARBOX ◦ Hundested CPG50 reduction ratio 4.12:1

PROPELLER ◦ Hundested variable pitch control 4 blades featuring

RUDDER ◦ Semi balanced with skeg mounted bearing

STEERING SYSTEM ◦ Electro-Hydraulic steering gear system Type: CL.2-B401

**STERN & BOW
THRUSTER** ◦ Extractible Hundested A/S model FT 2½ R 75 HP

ELECTRICITY ◦ 24V 220/380 V 50 Hz

AC SYSTEM ◦ 220/380 V 50hz

DC SYSTEM ◦ 24V

GENERATORS	<ul style="list-style-type: none"> ○ 2 x CAT 380V, 50Hz, 3 PH+N 70 kW ○ Circa: 12,300 hours - July 2020 ○ 1 x CAT 380V, 50Hz, 3 PH+N, 40 kW ○ 2,588 hours July 2020
EMERGENCY GENERATOR	<ul style="list-style-type: none"> ○ 1 x Mase IS 14.5 T, 380V, 50Hz, 3 PH+N 12kW (lazarette)
SHORE POWER	<ul style="list-style-type: none"> ○ Converter output 400/230V 50Hz ○ Inlet cable:- 1 per 125 amp retractable 30m
ENGINE START BATTERY	<ul style="list-style-type: none"> ○ 1 x Per 24V 200amp Gel battery
GENS START BATTERY	<ul style="list-style-type: none"> ○ 1 x Per 24V 150amp Gel battery
SERVICE BATTERY	<ul style="list-style-type: none"> ○ 1 x Per 24V 400amp Gel battery for E lighting
STARTING BATTERIES	<ul style="list-style-type: none"> ○ E/G 1 x Per 12V 100amp Gel battery
RADIO BATTERY	<ul style="list-style-type: none"> ○ 1 x Per 24V 150amp Gel battery
AIR CONDITIONING	<ul style="list-style-type: none"> ○ 2 x Condaria Unitseach 72,000 kcal/h ○ 2 x sea water pumps ○ 2 x Chilled water pump ○ 4 x Compressor ○ 1 x Boiler for hot ○ Fan Coils: 6 x crew, 3 x wheelhouse, 4 x main saloon, 6 x Owners/Guest cabins, 2 x ECR
COMPRESSED AIR SYSTEM	<ul style="list-style-type: none"> ○ 2 x Mattei compressors w/ max. pressure 10.5 bar ○ 1 x 100litres Air receiver Tank ○ 1 x Racor Air dryer
VENTILATION	<ul style="list-style-type: none"> ○ Extraction: Crew area, Galley, Wheelhouse, Main Saloon, Owners/Guest Area. ○ Engine Room: Port and Stbd Side fan invertible
PLUMBING	<ul style="list-style-type: none"> ○ PVC
WATER MAKERS	<ul style="list-style-type: none"> ○ 2 x Idromar MC5S each 5,500/day (total 11,000 litres per day)
WATER BOILER	<ul style="list-style-type: none"> ○ 2 x Gianneschi 200 liters 5 kW
FRESH WATER PUMP	<ul style="list-style-type: none"> ○ 2 x Gianneschi & Ramacciotti each 70 l / m
HOT WATER PUMP	<ul style="list-style-type: none"> ○ Gianneschi & Ramacciotti CB-CG
TOILET SYSTEM	<ul style="list-style-type: none"> ○ 10 x Jet Marine WC
SEWAGE TREATMENT	<ul style="list-style-type: none"> ○ Hamann
FUEL OIL	

TRANSFER PUMP	<ul style="list-style-type: none"> ○ 1 x Gianneschi & Ramacciotti
FUEL OIL CENTRIFUGE PUMP	<ul style="list-style-type: none"> ○ 1 x Alfa Laval MAB 103B-24
FUEL OIL FILTERS	<ul style="list-style-type: none"> ○ Facet model VFCS 21/C-PG primary filters
LUBE OIL PUMP	<ul style="list-style-type: none"> ○ 1 x Gianneschi & Ramacciotti
OIL WATER SEPARATOR	<ul style="list-style-type: none"> ○ Facet model CPS 1.6 E
TANK DISCHARGE PUMP	<ul style="list-style-type: none"> ○ 2 x Jet vacuum each 3kW
TANKS FOR HYDRAULICS	<ul style="list-style-type: none"> ○ 1 x 440 litres for PTO service ○ 1 x 100 litres for mobile drift and Van ○ 1 x For Shell door, G/way and Davit unit ○ Sauer Danfoss for PTO service ○ ABB motor M3000 for mobile drift and Vang ○ ABB motors pump for Shell door, G/way, Side ○ ladder and Davit unit
HYDRAULIC PUMPS	<ul style="list-style-type: none"> ○ 1 x Gianneschi ACM-BT 220/380 l/m 4 Kw
PRIMARY BILGE PUMP	<ul style="list-style-type: none"> ○ 7 x Gianneschi & Ramacciotti Mini Maxi Sub Vortex; ○ 1 for each compartment
SECONDARY BILGE PUMP	<ul style="list-style-type: none"> ○ Gianneschi & Ramacciotti ACM-BT 220/380 l/m 4kW
FIRE PUMP	
7. SAILS & RIGGING	
SAILS AREA	<ul style="list-style-type: none"> ○ 2,216 sqm approx.
MAIN SAIL	<ul style="list-style-type: none"> ○ 1 x North Sail 432 sqm boom furling full battened (2006) revised 2011
STAYSAIL	<ul style="list-style-type: none"> ○ 1 x North Sail 268 sqm furling (new 2015 Onesail)
GENOA	<ul style="list-style-type: none"> ○ 1 x North Sail 491 sqm furling (2006)
MPS	<ul style="list-style-type: none"> ○ 1 x North Sail 1025 sqm (2006) revised 2011 - with new sock 2011 ○ 2 x Main sheet ○ 1 x Halyard Main Sail ○ 2 x Genoa Sheet ○ 1 x Genoa Halyard
HALYARDS	<ul style="list-style-type: none"> ○ 2 x Staysail Sheet ○ 1 x Staysail halyard ○ 2 x MPS sheet ○ 4 x Service halyard ○ 1 x Tender Hoist ○ 2 x Bigo control Halyard
MAST	<ul style="list-style-type: none"> ○ 1 x Perini Navi aluminium mast 52.4 mt from water line 5

BOOM	<ul style="list-style-type: none"> ○ spreader ○ 1 x Perini Navi Furling boom electric, Carbon fibre
BOOM VANG	<ul style="list-style-type: none"> ○ 1 x Perini Navi Stainless steel, Hydraulic
POLO LIFT	<ul style="list-style-type: none"> ○ 1 x Perini Navi, Titanium
SAIL TRACK & BLOCKS	<ul style="list-style-type: none"> ○ 1 x Harken
RIGGING	<ul style="list-style-type: none"> ○ Perini Navi system, Stainless steel rod
FURLING GEAR	<ul style="list-style-type: none"> ○ 2 x Perini Navi system, electric
WINCHES	<ul style="list-style-type: none"> ○ 2 x Harken 1120 three speed for service ○ 2 x Antal W66 manual winches double speed
CAPTIVE REEL WINCHES	<ul style="list-style-type: none"> ○ 7 x Perini Navi electric winches for sails operation ○ 3 x Perini Navi electric winches for tender launching ○ 2 x Bigo control Halyard

8. NAVIGATION WHEELHOUSE

MAGNETIC COMPASS	<ul style="list-style-type: none"> ○ Jupiter 180
GYROCOMPASS	<ul style="list-style-type: none"> ○ Sperry Marine C-Plath Navigat 2100 with ○ 1 x Control & Display unit
AUTOPILOT	<ul style="list-style-type: none"> ○ Sperry Marine Navipilot V HSC
RADAR	<ul style="list-style-type: none"> ○ 1 x Furuno Far 28x7 Series Radar-Arpa ○ 1 x Furuno Navnet with Radar Plotter Furuno 1943C ○ colour screen and
CHARTS	<ul style="list-style-type: none"> ○ Navionics Charts interfaced with Gyrocompass
GPS	<ul style="list-style-type: none"> ○ 2 Furuno GP 90 ○ 1 x Furuno ETR 6/10 sensor and Colour LCD
ECHOSOUNDER	<ul style="list-style-type: none"> ○ Sounder Furuno FCV-600L
AIS	<ul style="list-style-type: none"> ○ 1 x Furuno AIS FA-100
ECDIS	<ul style="list-style-type: none"> ○ 1 x Navisailor interfaced with GPS AIS Gyro Navpilot ○ 2 x Displays B&G Hercules 2000 series
NAVTEX	<ul style="list-style-type: none"> ○ 1 x Furuno NX-500
RUDDER ANGLE INDICATOR	<ul style="list-style-type: none"> ○ Yes
CONTROLS	<ul style="list-style-type: none"> ○ CAT main Engine Control & Display Touch screen ○ JIB sail Control Joystick ○ Mobile drift Control Joystick
VHF	<ul style="list-style-type: none"> ○ 2 x VHF DSC Furuno and Skanti with relative handset
GMDSS STATION	<ul style="list-style-type: none"> ○ Satcom C ○ 3 x UPS 1500kva each
OTHER	<ul style="list-style-type: none"> ○ Navigation Lights panel ○ PC + scanner/printer

9. NAV EQUIPMENT AFT OUTHELM PT & SB

MONITOR

- 1 x Monitor 20" for each outhelm
- Sails Control station for Main sail, Genoa and Jib for each outhelm

CONTROLS

- Mobile drift joystick on Port Outhelm
- CAT Main Engine Control & Display Touch screen for each outhelm
- Vang Joystick on Stbd Outhelm

AUTOMATIC PILOT

- Navipilot V HSC for each Outhelm

DISPLAYS

- 4 x B&G display

VHF

- VHF DCS on Stbd Outhelm with speakers

10. COMMUNICATION EQUIPMENT

VHF

- 2 x VHF DSC Furuno & Skanti with relative handset

SATCOM

- V-SAT broad band antenna connection
- 1 x Telephone switchboard Panasonic KX TDA-100

TELEPHONE EXCHANGE

- 1 x Panasonic desk telephone GSM/GPRS dual band and internal calls

TRANSCEIVER

- 1 x With handset Thrane & Thrane Fleet 77

GMDSS

- GMDSS station Satcom C

OFFICE EQUIPMENT

- PC + scanner/printer

INTERNET

- WiFi Internet connection throughout

11. DECK EQUIPMENT

ANCHORS

- 2 x 600kg Stainless steel each recessed on hawse-pipe

CHAINS

- 2 x 150m each side -galvanised steel naval chain
- diameter 24mm

WINDLASSES

- 2 x Officina Nanni independent vertical axis electric

ANCHOR WINCHES

- 2 x 3-Speed electrical mooring winches on aft main deck

PASSERELLE

- Hydraulic, Telescopic remotely controlled

SIDE LADDERS

- Retractable into main deck midship w/selflevelling steps
- Hawning covering the entire Aft Cockpit/Dinning area

SIDE SHELL DOOR

- Port side swim platform

SALOON DOORS

- 2 x Sliding doors infrared sensors, pneumatic mechanism and belt driven

DECK LOCKERS

- 6 x Deck store located amidship and bow area

PORTLIGHTS

- 12 x Laminated double-glazed

HATCHES

- Flush at Crew access, engine room, lazarette

WATERTIGHT

- 5 x Forepeak, Crew quarter, Fwd Engine Room, Aft

BULKHEAD

- Engine Room, Lazarette

BILGE

- COMPARTMENTS**
 - 7 x Compartments w/ high level alarm + bilge suction
 - Cushions for solarium area
- SOFT FURNISHING**
 - Cushions for Aft Cockpit bench
 - Cushions for fwd bench
- MOORING LINES**
 - 4 x White nylon mooring lines 30m - 40mm diameter
 - 1 x White towing line 180m
 - 4 x External Out helms and relative wheels
 - 2 x Out helm seat
 - 10 x Covers for wheelhouse and saloon windows
 - 6 x Covers for all external winches
- COVERS**
 - 2 x Covers for Life Raft
 - Covers for Aft Cockpit furniture including chairs, tables & bench suite
 - 1 x Tender Cover
 - 1 x Cover for solarium area
- FENDERS**
 - 6 x Inflatable Polyform Fenders F11
 - 4 x Inflatable Polyform Fenders A5
 - Complete set of International Signals Code Flags
 - 1 x Bluetooth remote control for Tender launching
- OTHER DECK EQUIPMENT**
 - 1 x White towing line 180m length
 - 2 x Boat hook in Carbon fibre 4 meters length
 - Various materials (buckets, brooms, brush, etc...)

12. ENTERTAINMENT EQUIPMENT

- CENTRAL SOUND SYSTEM
 - Creston remote control in Main Saloon with following function:
 - DVD, Terrestrial TV signal, Satellite TV signal, MP3 Server, Central Turner FM/AM,
 - CD Player, iPod, Navisailor repeater on TV Screen.
- MAIN SALOON
 - 2 x Dome Seatel TV Satellite antenna
 - Pioneer TV 50" Colour Plasma (2006)
 - 1 x Decoder SKY
 - 1 x Pioneer DVD player
 - 1 x Pioneer DTS dolby digital
 - 1 x Bose Home Theater with 15 speakers and Sub-woofer
 - 1 x iPod dock station
 - 1 x Maranz Music server
 - 1 x Samsung VHS Player
 - 1 x Denon TV 1500RD AM/FM Stereo Turner Unit
 - 4 x Speakers B&W CCM 50
- OWNER'S CABIN
 - 1 x Sharp Aquos 20" colour TV LCD

- 1 x Decoder TV SAT
 - 1 x Pioneer DVD Player
 - 1 x Pioneer DTS Dolby Digital
 - 4 x Speakers B&W CCM 50 + 2 Speakers for the Bathroom (same type)
 - 1 x Creston infrared remote control
 - 1 x iPod dock station
- GUESTS CABIN (IN EACH)
 - 20" Sharp Aquos colour TV LCD
 - 1 x Decoder TV SAT
 - 1 x Sony mini Hi-Fi CD/DVD Player – AM/FM tuner unit
 - 2 x Speakers B&W CCM 50
 - 1 x iPod Dock Station
 - 1 x Philips infrared remote control
- AFT COCKPIT
 - 4 x Speakers B&W CCM 50
 - 1 x Audio access keypad remote control installed in the wall
 - 1 x Creston waterproof Remote control
- WHEELHOUSE
 - 1 x Pioneer Turner CD player
 - 2 x Speakers B&W CCM 50
- CREW MESS
 - 1 x Toshiba 23" 16:9 colour LCD TV
 - 1 x decoder TV SAT
 - 1 x Pioneer DVD Player
 - 1 x TEAC CD/Turner Unit Amplified
 - 2 x Speakers B&W CCM 50
- CREW CABIN (IN EACH)
 - 1 x Pioneer Turner CD player
 - 2 x Speakers B&W CCM 50
- GALLEY
 - 1 x Pioneer Turner CD player
 - 2 x Speakers B&W CCM 50
- LAUNDRY
 - 1 x Pioneer Turner CD player
 - 2 x Speakers B&W CCM 50
- LAZARETTE
 - 1 x Pioneer Turner CD player
 - 2 x Speakers B&W CCM 50

13. GALLEY & LAUNDRY EQUIPMENT

- GALLEY
 - 1 x Extractor
 - 1 x Black Granite countertops
 - 1 x Samsung Microwave oven
 - 4 x Professional Cook tops ANGELO PO

- 1 x Angelo PO Grill
- 1 x Angelo PO Conventional Oven
- 1 x Angelo Steam Oven
- 1 x Gaggenau Deep fat Fryer
- 1 x Miele Dish washer
- 3 x Standard stainless sink + 2 tap with hand shower
- 1 x Tap salt water
- 2 x Macerators
- 1 x Waste disposal
- LAUNDRY
 - 2 x Miele Industrial grade washing machine
 - 2 x Miele Industrial Drying machine
 - 1 x Miele folding ironing machine
 - 1 x Ironing board
 - 1 x Stainless sink + tap with hand shower
 - Linen cupboard and shelving
- REFRIGERATION GALLEY
 - 1 x 4 Doors + 3 drawers refrigeration
 - 1 x Doors Freeze
 - 1 x Ice maker Hoshizaki
- REFRIGERATION LAZARETTE
 - 1 x 4 Doors Hoshizaki
 - 1 x Ice Maker Hoshizaki
 - 1 x Wine cellar
- REFRIGERATION SALOON
 - 1 x Door Refrigeration
- AFT COCKPIT REFRIGERATION
 - 1 x Door Refrigeration
- 14. SECURITY & SAFETY EQUIPMENT
 - SAFETY
 - 2 x RFD Limited mod Surviva MK III for 20 person each
 - 18 x Immersion suite
 - 20 x Lifejackets for adult + 4 lifejacket for children
 - 4 x Solas Life ring on main deck aft – 2 with 30mt rope and MOB signal buoy
 - 1 x EPIRB Jotron 30S MK2 406-121.5 MHz
 - 1 x Jotron Tron Sart radar transponder 9 GHz
 - 5 x White hand flares
 - 8 x Red hand flares
 - 6 x Rocket flares
 - 2 x Smoke signal
 - 4 x Pain Wessex throwing lines 250 mt
 - 2 x Fire suite + accessories (boots, hatchets, rope, hood, gloves, etc...)
 - 2 x Breathing device 200bar + 2 spare cylinder
 - 1 x Fire blanket

- 2 x Torch with power supply dock
 - SECURITY
 - 2 x Monitor 23" colour LCD (Wheelhouse) and 19"colour LCD Crew Dinette
 - Engine control and instrumentation, Full generator control and instrumentation, Tanks level, Control for exterior interior lighting, sailing instrumentation monitoring, doors and hatches monitoring.
 - 2 x Dome cameras on port and stbd spreaders (Zoom/Focus)
 - 1 x Dome Camera in Engine Room (Zoom/Focus)
 - 1 x Fix Camera on Wheelhouse
 - 2 x Control station – Wheelhouse and Crew Dinette
 - FIRE FIGHTING
 - 38 x Fire extinguisher various type
 - 2 x Fire suite + accessories (boots, hatchets, rope, hood, gloves, etc...)
 - 2 x Breathing device 200bar + 2 spare cylinder
 - 1 x Fire blanket
 - 2 x Torch with power supply dock
 - Fire panel Consilium in wheelhouse with sensor throughout the yacht ceiling
 - Engine Room Dedicate cylinders CO2 through fixed system with control station into Lazarette
 - Medical Equipment in accordance with class Oceanic 1
15. TENDERS & WATERSPORTS EQUIPMENT
- TENDERS
 - 1 x 5.00m Castoldi Diesel Jet-tender 115hp
 - 1 x 3.50m Novurania overboard engine Yamaha 15hp
 - WATER SPORTS
 - Pair of Water Ski
 - Wake board complete
 - Rope for water toy towing
 - GYM
 - 1 x Tapis Roulant Technogym
 - 1 x Recline bike Technogym
16. REFIT NOTES
- UPGRADE / MAINTENANCE 2019
 - Sanding Teak deck
 - Painting and varnishing the gunwale (3 times per year)
 - Replaced damaged Teak planks
 - Service Main Engine as per Maintenance program
 - Service 3 Generators as per Maintenance program
 - Revised 3 Jet Pumps WC System
 - Revised 1 fire pump
 - Revised 2 bilge pumps
 - Revised A/C pumps
 - Perini Overlap system upgrade - mounted on all sail winches
 - Modified PTO Tank for a better flow

- Replaced 3 service Halyard
- Replaced Tender Hoist
- Replaced 2 Main boom Sheets
- Winches and Anchor windless maintenance (yearly)
- Painted antiskid on Sundeck
- Installed new Cathodic Protection Monitoring System
- Serviced pneumatic cylinders backstay
- Black and grey water tank inspected and cleaned
- Serviced jib and Genoa furlers
- New service and engine batteries(3 generators included)
- Sailing electronic manoeuvres (Perini) upgrade
- Bridge electronic instruments upgrade(new vhf and uhf radio)
- 2 revised air compressors Mattei max. pressure 10.5 bar
- Caterpillar C32 6000 hrs service –New Aftercooler and pipings connected, new injectors
- 3 Generators maintenance
- Hundested pitch propeller serviced-electronic check and all electrovalves on the pitch(6) replaced
- SKY decoders and new Tv fitted in all cabins
- New external monitors Furuno for navigational purposes replaced
- Tender Castoldi engine and jet completely serviced
- Air conditioning check all air filters replaced
- REFIT: 2017
 - Replaced Main Engine Control/Monitoring Panel on Wheelhouse
 - Replaced pipes keel
- REFIT: 2016
 - ABS Special Survey 10 years (Revised Shaft, all tanks checked, Ecosound on hull)
 - Reseal Main Deck with new Polymer and Sanding Teak
 - Upgrade of A/C Control Panel
 - Revised A/C pumps

17. COMMENTS

Originally delivered in 2006 from the very well-known Perini Navi shipyard in Viareggio, Heritage incorporates excellent engineering by Perini Navi and her naval architecture is by the famed Ron Holland. She is also somewhat unusual in Perini terms, having been delivered to a fully custom design and owned by the same Owners ever since her launch. Offering exhilarating sailing performance, Heritage cruises easily under engine at 10 knots, and partly because she has no flybridge and is considerably lighter than other Perinis of similar size, she is no slouch under sail with the ability to reach a top speed of approximately 14 knots under full sail with a favourable wind.

The unique custom designed interior features a very large main saloon with dining area, and below she offers accommodation for up to 12 guests thanks to her charter and family friendly five cabin layout (she is also commercially registered). One notable feature is the

full beam Owner's cabin located aft which has two double beds on each side, ideal for comfortable passage-making. Design-wise the teak wood interior is somewhat nautical but light in colour and hard to dislike, and it provides a second Owner with a relatively blank canvas which would be very easy to personalise.

Outside, the decks and wide gangways feel uncluttered, and there is a huge sunbathing area located on the cockpit roof. The aft deck areas are also very spacious and provide a huge covered aft cockpit area with no less than three seating areas and a bar, all out of the sun and also well out of the way of the action while sailing so that guests can remain undisturbed. Further aft there is also a beach club/tender bay.

Always well maintained, Heritage has now served her purpose for her current Owners, who have priced her fairly so that a new Owner can take her onto new adventures. Viewing is highly recommended.

Exclusions

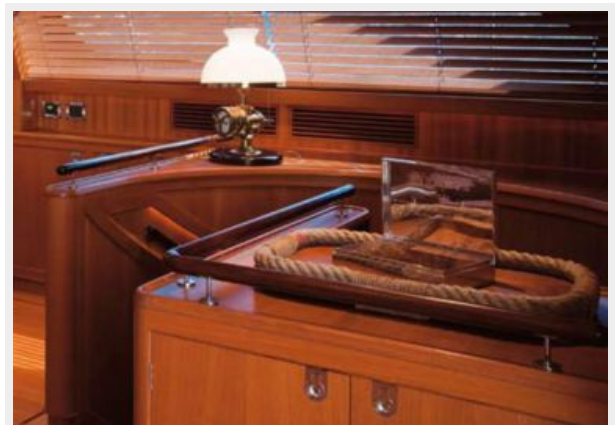
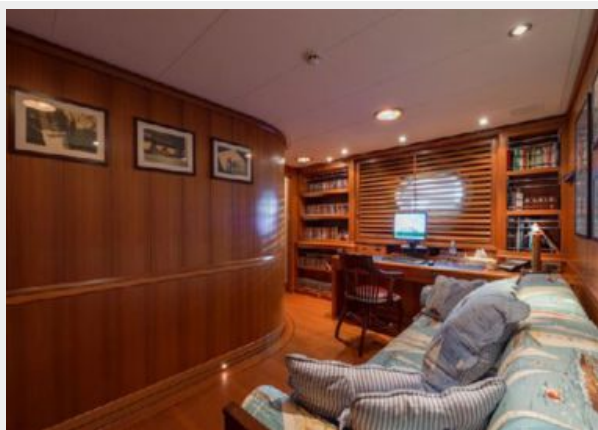
Owner's personal belongings.

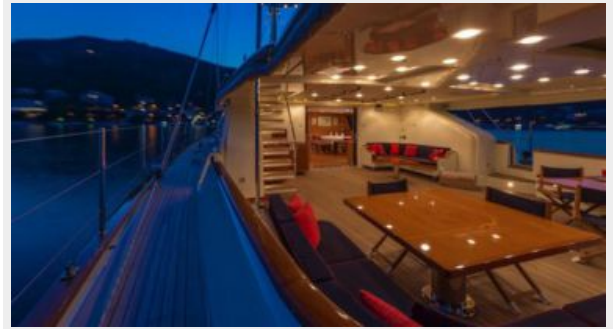
Disclaimer

The Company offers the details of this vessel or yacht in good faith but cannot guarantee or warrant the accuracy of this information nor warrant the condition of the vessel. A buyer should instruct his representatives, agents, or his surveyors, to investigate such details as the buyer desires validated. This vessel or yacht is offered subject to prior sale, price change, or withdrawal without notice.

PHOTOS











CONTACTS

Andrey Shestakov, leading yacht broker of the sales department of Shestakov Yacht Sales Inc. Shestakov Yacht Sales Inc., the official representative of the Miami/Fort Lauderdale FL headquarters.

Contact details

Email: andrey@shestakovyachtsales.com

Web: shestakovyachtsales.com/en/

Telephones

USA: +1(954)274-4435

Office hours

Monday – Saturday: **9:00 - 21:00** EDT

Sunday: **closed**

Address



Harbour Towne Marina, 850 NE 3rd St,
STE 213, Dania, FL 33004