

FAST FORWARD — C & C YACHTS



Builder: C & C Yachts

Year Built: 2004

Model: Sloop

Price: PRICE ON APPLICATION

Location: United States

LOA: 32' 0" (9.75m)

Beam: 10' 10" (3.30m)

Max Draft: 5' 5" (1.65m)

Cruise Speed: 6 Kts. (7 MPH)

Max Speed: 7 Kts. (8 MPH)

Our experienced yacht broker, Andrey Shestakov, will help you choose and buy a yacht that best suits your needs **Fast Forward — C & C Yachts** from our catalogue. Presently, at Shestakov Yacht Sales Inc., we have a wide variety of yachts available on our sale's list. We also work in close contact with all the big yacht manufacturers from all over the world.

If you would like to buy a yacht **Fast Forward — C & C Yachts** or would like help answering any questions concerning purchasing, selling or chartering a yacht, please call **+1(954)274-4435**

TABLE OF CONTENTS

TABLE OF CONTENTS	2
SPECIFICATIONS	7
Overview	7
Basic Information	7
Dimensions	7
Speed, Capacities and Weight	7
Accommodations	8
Hull and Deck Information	8
Engine Information	8
DETAILED INFORMATION	9
MAIN DESCRIPTION	9
C&C 99 - FAST FORWARD - MEDIA	9
C&C 99 - FAST FORWARD - WALKTHROUGH	9
C&C 99 - FAST FORWARD - ACCOMODATIONS	11
C&C 99 - FAST FORWARD - MAIN CABIN	11
C&C 99 - FAST FORWARD - NAV STATION	11
C&C 99 - FAST FORWARD - GALLEY	12
C&C 99 - FAST FORWARD - HEAD	12
C&C 99 - FAST FORWARD - COCKPIT	12
C&C 99 - FAST FORWARD - HELM	12
C&C 99 - FAST FORWARD - ELECTRONICS	12
C&C 99 - FAST FORWARD - RIG	13
C&C 99 - FAST FORWARD - SAILS & CANVAS	13
C&C 99 - FAST FORWARD - DECK & HULL	13
C&C 99 - FAST FORWARD - MECHANICAL	14
C&C 99 - FAST FORWARD - ELECTRICAL	14
C&C 99 - FAST FORWARD - SAFETY	14
C&C 99 - FAST FORWARD - UPGRADES & MAINTENANCE	15

DISCLAIMER	15
Exclusions	15
Disclaimer	15
PHOTOS	16
C&C 99 - Fast Forward - 6	16
C&C 99 - Fast Forward - 1	16
C&C 99 - Fast Forward - 7	16
C&C 99 - Fast Forward - 9	16
C&C 99 - Fast Forward - 10	17
C&C 99 - Fast Forward - 11	17
C&C 99 - Fast Forward - 8	17
C&C 99 - Fast Forward - 12	17
C&C 99 - Fast Forward - 73	18
C&C 99 - Fast Forward - 13	18
C&C 99 - Fast Forward - 99	18
C&C 99 - Fast Forward - 42	18
C&C 99 - Fast Forward - 27	18
C&C 99 - Fast Forward - 32	18
C&C 99 - Fast Forward - 62	19
C&C 99 - Fast Forward - 14	19
C&C 99 - Fast Forward - 64	19
C&C 99 - Fast Forward - 66	19
C&C 99 - Fast Forward - 68	19
C&C 99 - Fast Forward - 72	19
C&C 99 - Fast Forward - 74	20
C&C 99 - Fast Forward - 40	20
C&C 99 - Fast Forward - 67	20
C&C 99 - Fast Forward - 16	20
C&C 99 - Fast Forward - 25	21

C&C 99 - Fast Forward - 65	21
C&C 99 - Fast Forward - 63	21
C&C 99 - Fast Forward - 54	21
C&C 99 - Fast Forward - 60	22
C&C 99 - Fast Forward - 36	22
C&C 99 - Fast Forward - 70	22
C&C 99 - Fast Forward - 38	22
C&C 99 - Fast Forward - 26	23
C&C 99 - Fast Forward - 76	23
C&C 99 - Fast Forward - 75	23
C&C 99 - Fast Forward - 55	23
C&C 99 - Fast Forward - 77	23
C&C 99 - Fast Forward - 31	23
C&C 99 - Fast Forward - 41	24
C&C 99 - Fast Forward - 20	24
C&C 99 - Fast Forward - 89	24
C&C 99 - Fast Forward - 69	24
C&C 99 - Fast Forward - 43	24
C&C 99 - Fast Forward - 48	24
C&C 99 - Fast Forward - 50	25
C&C 99 - Fast Forward - 28	25
C&C 99 - Fast Forward - 100	25
C&C 99 - Fast Forward - 52	25
C&C 99 - Fast Forward - 53	25
C&C 99 - Fast Forward - 29	25
C&C 99 - Fast Forward - 24	26
C&C 99 - Fast Forward - 78	26
C&C 99 - Fast Forward - 71	26
C&C 99 - Fast Forward - 33	26

C&C 99 - Fast Forward - 83	27
C&C 99 - Fast Forward - 59	27
C&C 99 - Fast Forward - 22	27
C&C 99 - Fast Forward - 56	27
C&C 99 - Fast Forward - 84	28
C&C 99 - Fast Forward - 86	28
C&C 99 - Fast Forward - 81	28
C&C 99 - Fast Forward - 61	28
C&C 99 - Fast Forward - 85	28
C&C 99 - Fast Forward - 79	28
C&C 99 - Fast Forward - 21	29
C&C 99 - Fast Forward - 93	29
C&C 99 - Fast Forward - 37	29
C&C 99 - Fast Forward - 15	29
C&C 99 - Fast Forward - 88	29
C&C 99 - Fast Forward - 87	29
C&C 99 - Fast Forward - 51	30
C&C 99 - Fast Forward - 57	30
C&C 99 - Fast Forward - 58	30
C&C 99 - Fast Forward - 35	30
C&C 99 - Fast Forward - 19	30
C&C 99 - Fast Forward - 39	30
C&C 99 - Fast Forward - 44	31
C&C 99 - Fast Forward - 82	31
C&C 99 - Fast Forward - 46	31
C&C 99 - Fast Forward - 47	31
C&C 99 - Fast Forward - 30	31
C&C 99 - Fast Forward - 91	31
C&C 99 - Fast Forward - 97	32

C&C 99 - Fast Forward - 98	32
C&C 99 - Fast Forward - 92	32
C&C 99 - Fast Forward - 95	32
C&C 99 - Fast Forward - 34	32
C&C 99 - Fast Forward - 49	32
C&C 99 - Fast Forward - 94	33
C&C 99 - Fast Forward - 18	33
C&C 99 - Fast Forward - 80	33
C&C 99 - Fast Forward - 23	33
C&C 99 - Fast Forward - 96	33
C&C 99 - Fast Forward - 45	33
C&C 99 - Fast Forward - 17	34
C&C 99 - Fast Forward - 90	34
CONTACTS	35
Contact details	35
Telephones	35
Office hours	35
Address	35

SPECIFICATIONS

Overview

Fast Forward is one of the best examples of a C&C 99 on the market today. Very well maintained, with few blemishes, she shows like an almost new boat. When first released the C&C 99 was voted Cruising World's Performance Cruiser of the Year, and for good reason. She is a perfect combination of race boat above deck and cruising boat below. With a vacuum infused BPA epoxy, unidirectional "E" glass construction, normally found only in custom boats, the C&C 99 is well known for a superior build that is rare in a production boat. Fast Forward is turn-key, great looking, comes with an extensive sail locker and is surprisingly roomy and well appointed below decks. Whether you are looking to race, cruise or both, she and is ready to go and will get you there fast in style and comfort.

Basic Information

Category: Sloop

Model Year: 2004

Year Built: 2004

Country: United States

Dimensions

LOA: 32' 0" (9.75m)

LWL: 29' 1" (8.86m)

Beam: 10' 10" (3.30m)

Max Draft: 5' 5" (1.65m)

Clearance: 49' 7" (15.11m)

Speed, Capacities and Weight

Cruise Speed: 6 Kts. (7 MPH)

Max Speed: 7 Kts. (8 MPH)

Water Capacity: 42 Gallons

Holding Tank: 20 Gallons

Fuel Capacity: 23 Gallons

Accommodations

Total Cabins: 2

Total Heads: 1

Hull and Deck Information

Hull Material: Fiberglass

Engine Information

Engines: 1

Manufacturer: Volvo

Model: MD2020-D BT

Engine Type: Inboard

Fuel Type: Diesel

DETAILED INFORMATION

MAIN DESCRIPTION

Fast Forward is one of the best examples of a C&C 99 on the market today. Very well maintained, with few blemishes, she shows like an almost new boat. When first released the C&C 99 was voted Cruising World's Performance Cruiser of the Year, and for good reason. She is a perfect combination of race boat above deck and cruising boat below. With a vacuum infused BPA epoxy, unidirectional "E" glass construction, normally found only in custom boats, the C&C 99 is well known for a superior build that is rare in a production boat. Fast Forward is turn-key, great looking, comes with an extensive sail locker and is surprisingly roomy and well appointed below decks. Whether you are looking to race, cruise or both, she and is ready to go and will get you there fast in style and comfort.

C&C 99 - FAST FORWARD - MEDIA

Fast Forward Walkthrough Video: [Fast Forward Virtual Tour](#): [Fast Forward Slide Show](#):
Fast Forward Hammond Race: [- Keeping pace with the Navy 44s Manufacturer's Brochure](#):
Cruising World Review: [Yacht & Boat Review](#): [Practical Sailor Review](#): [Sailing Magazine Review](#):

C&C 99 - FAST FORWARD - WALKTHROUGH

COCKPIT:The cockpit is spacious and provides plenty of room to sail the boat with a full crew, as well as a great space to entertain at anchor or dockside. It features a pedestal helm with an oversized, leather wrapped stainless wheel, binnacle mounted Richie compass and stainless steel hand hold. The engine gauges and start-stop switches are mounted on the pedestal, below the wheel hub. The engine throttle/gear shift is found to starboard of the helm with the emergency bilge pump to port. Depth, speed, wind and instruments are mounted on the cabin-top above the companionway. A 30 amp shore power receptacle is found on the port side of the transom walk-through along with a cockpit shower and stereo speaker. Seating for 7 is provided by port and starboard benches and a stern bench, which is hinged so it can be raised to allow access to the walk through transom, leading to a swim platform with telescoping ladder. There is a large lazarette locker, accessed through a hatch found under the port stern seat. The LPG locker is found opposite on the starboard side. Additional storage is provided by a locker under the starboard side bench. Four Harken 44 2-speed self-tailing winches are mounted port and starboard for head sail and spinnaker trim. All running rigging leads to the cockpit and is trimmed with two Harken 32 2-speed winches mounted on the cabin top port & starboard. The mainsheet traveler is deck mounted just forward of the helm for easy trimming, while at the same time stowing out of the way when at anchor or dockside. **TOPSIDES:**Moving forward the deck is protected by stainless steel bow and stern railings connected by dual lifelines running the length of the deck port, starboard and across the stern; gates are found at the stern and at the port and

starboard side decks, just forward of the cockpit. An anchor locker is found at the bow. Stainless hand rails and three opening hatches are found on the cabintop. Jib tracks run along the port and starboard side decks, with cleats at the bow and at the stern. The double spreader rig features a Tuff Luff, boom vang and mechanical backstay adjuster. The standing rigging is stainless wire cable.

MAIN CABIN:With cherry joinery and appointments, navy cushions and a teak & holly sole, the spacious main cabin is a bright and inviting space. Entering the cabin from the cockpit companionway, the galley is found to starboard and the aft cabin to port. A port settee with seating for three extends fore and aft along the length of the salon. A chart table/nav station is found at the aft end of the settee. On the starboard side forward of the galley a settee provides seating for three. A folding dining table is center mounted on the mast. Shelves and storage lockers run the full length of the salon along the port and starboard sides. There are two overhead lights mounted behind the settees. Ventilation is provided by an overhead opening hatch, an opening port found on the aft starboard bulkhead and the companionway hatch. Six fixed port/windows run along the side of the cabin port and starboard. Three fans are mounted around the cabin. A 120 vac outlet is found forward on the starboard side. The main cabin offers 74 inch headroom.

NAV STATION:A stern facing lift top navigation table is found at the aft end of the port settee, to the right the aft cabin. The nav station features an instrument array mounted above the table and the electrical control panels, fuel gauge and a 120 vac outlet to the right. A light is mounted above the electrical control panel, with the main battery switch found below the table.

GALLEY:The U shape galley is found to the starboard of the cockpit companionway. A wrap around countertop includes a molded sink with hot and cold running water, a lpg stove with counter top cover, and a counter top access icebox. Storage bins are found above counter, along with a stowage area beneath the stove and a locker under the sink. There are two over counter lights and a 120 vac outlet located to the right of the sink along with the lpg control panel.

FORWARD CABIN:Upon entering the private forward cabin through a door in the salon forward bulkhead, a cherry chest with two lockers and a top shelf is found on the starboard side. There is a fixed port/window above the chest and a doorway leading to the head opposite, on the port side of the cabin. The v-berth for 2 is forward, with top access storage lockers underneath. Shelving runs the length of the v-berth, port and starboard. A 120 vac outlet is mounted on the forward side of the chest and a fan is mounted opposite on the port side of the v-berth. Two lights are mounted overhead along with an opening hatch. The cabin offers 68 inch headroom above a teak and holly sole.

AFT CABIN:The aft cabin is found on the portside and is accessed through a door located between the cockpit companionway and the nav station. The cabin features a large double berth, extending under the cockpit. On the port side a cherry locker with top shelf is found forward, with a shelf aft, forming a headboard for the berth. Another shelf is located on the port side of the berth. Additional storage is found under the berth. A fan and 120 vac outlet are mounted on the side of the locker. Light is provided by two overhead lights and a fixed port/window above the locker. Two opening ports provide ventilation. The cabin offers 70 inch headroom, reduced over the berth.

HEAD: The head is found forward of the salon and is accessed through doors in the salon forward bulkhead and the forward cabin. The head features a manual marine toilet and a countertop/shelf housing a sink with hot & cold running water. There are two lockers above the head and sink with an additional locker found below. A half mirror is mounted on the salon door. An overhead hatch provides ventilation and light with additional lighting provided by a light mounted above the sink and a fixed port/window above the head. The head

doubles as a shower and offers 68 inch headroom. ENGINE COMPARTMENT: The engine compartment is found under the companionway stairs.

C&C 99 - FAST FORWARD - ACCOMODATIONS

Fast Forward can sleep six people in the forward cabin, aft cabin and salon. C&C 99 - FAST FORWARD - FORWARD CABIN: The forward cabin is located in front of the salon and features: - Private cabin with hinged door- Teak & Holly sole- V-berth, sleeps 2, 82 inches- Top access under berth storage locker- Cabinet with two lockers & top shelf - Shelving running the length of the v-berth on the port & starboard sides- 2 Overhead light; 12 vdc- Courtesy night light, deck level- 120 vac outlet- Hella turbo fan; 12 vdc- Opening overhead hatch- Fixed port/window- Headroom: 68 inches C&C 99 - FAST FORWARD - AFT CABIN: The aft cabin is located on the port side next to the nav station, extending under the cockpit and includes: - Private cabin with hinged door- Double berth. sleeps 2, 86 inches- Top access under berth storage lockers- Cabinet with locker & top shelf- 2 Shelves- 2 Overhead lights; 12 vdc- Courtesy night light, deck level- 120 vac outlet- Hella turbo fan; 12 vdc- 2 Opening ports- Fixed port light- Headroom: 70 inches C&C 99 - FAST FORWARD - SALON SETTEES: - Starboard settee convert to a single berth; 75 inches- Port settee converts to a single berth; 74 inches

C&C 99 - FAST FORWARD - MAIN CABIN

The main cabin is entered from the cockpit, five steps down via a center companionway and features: - Cherry wood joinery throughout- Teak & Holly sole- Port settee; seats 3; converts to a single berth- Starboard settee; seats 3; converts to a single berth- Folding center cabin cherry dining table, mounted on the mast- Shelving and storage lockers run length of salon, port & starboard sides- 2 Top access under settee lockers- 2 Side access behind settee lockers- Cherry side trim doubles as a full-length hand holds, port and starboard sides- 4 Fixed port/windows; 2 port, 2 starboard- 1 Overhead opening hatch, center mounted- Companionway hatch w/handholds- 2 Overhead lights mounted at port and starboard sides; 12 vdc- 2 Courtesy night lights, deck level- 2 Hella turbo fans; 12 vdc- 1 120 vac outlet- 2 Planet Audio stereo speakers, mounted on forward bulkhead, port and starboard- 2 Fire extinguishers, mounted on forward bulkhead, port and starboard- Headroom 74 inches

C&C 99 - FAST FORWARD - NAV STATION

The Navigation Station is located in the aft port side of the main cabin and features: - Standard navigation table with lift top with storage underneath; rear facing- Instrument cluster mounted above navigation table including: * RayMarine ST60 - Compass * RayMarine ST60 - Autohelm Series - Multi * Standard Horizon Spectrum+ VHF Marine Radio * Sony Marine Series Stereo Radio - Bluetooth Compatible with USB and Aux In Ports - 2014- Electrical control panel; right of navigation table including: * 12 vdc distribution panel * 120 vac distribution panel * Fuel gauge * 120 vac outlet- Battery switch, beneath navigation table- Locker, beneath navigation

table- Overhead light; 12 vdc- Hella turbo fan; 12 vdc- 1 Fixed port/window

C&C 99 - FAST FORWARD - GALLEY

The U shaped galley is located in the aft starboard side of the main cabin and features:- Large wrap around Granicoat counter tops- Molded sink w/Borma hot & cold water spigot- Gimbale Force-10 two burner LPG stove w/counter top cover that can double as a serving tray- Xintex propane switch/sniffer system- Top loading ice box; 4 inch insulation- 1 Under counter locker; under sink- 3 Above counter lockers- Storage area beneath stove- 2 Above counter lights; 12 vdc- Courtesy night light, deck level- 120 vac outlet- Opening ports, aft bulkhead- 1 Fixed port/window

C&C 99 - FAST FORWARD - HEAD

The head, which doubles as a shower, is located forward of the main cabin on the port side and includes: - Salon and forward cabin access- Jabsco manual marine head- Counter with stainless steel sink- Dual purpose hot & cold sink spigot/shower wand- Shower wand mount, forward bulkhead- 2 Storage lockers behind head and sink- 1 Storage locker; under sink- 1 Over counter light, 12 vdc- Courtesy night light, deck level- 120 vac outlet- Mirror; salon door mounted- 1 Overhead opening hatch- 1 Fixed port/window- Headroom: 68 inches

C&C 99 - FAST FORWARD - COCKPIT

The cockpit is in the stern of the boat and features a T layout including:- Bench seating for 7 passengers; 2 port, 2 starboard, 3 aft- Wheel Helm- 2 Sony outdoor stereo speakers - 2014- Large transom locker; port side- Storage locker; under starboard bench seat- Companionway to salon; center forward- Walk through transom, with hinged bench seat- Telescoping swim ladder; center mounted

C&C 99 - FAST FORWARD - HELM

Center mounted pedestal helm with:- Edson bulkhead-mount 40 inch Destroyer wheel w/leather cover- Custom, IMS-inspired, 1:1 ratio ultra-responsive steering system- Ritchie Powerdamp magnetic binnacle compass- Stainless steel binnacle hand hold- Gear shift/throttle; starboard side - Engine instrument panel (start, stop, tachometer, warning lights & audible alarm); pedestal mounted below wheel hub- Hinged helm seat- Instrument cluster mounted above salon companionway- Emergency tiller

C&C 99 - FAST FORWARD - ELECTRONICS

- Chart Plotter, Garmin GPSMap, 4212, 12? (Not Installed) Located in cockpit mounted above

salon companionway:- RayMarine ST60 - Wind- RayMarine ST60 - Autohelm Series - Depth- RayMarine ST60 - Autohelm Series - Speed- RayMarine ST60 - Autohelm Series ? Multi- Lev-O-Guage Located at navigation station in main cabin:- RayMarine ST60 - Compass- RayMarine ST60 - Autohelm Series - Multi- Standard Horizon Spectrum+ VHF Marine Radio- Sony Marine Series Stereo Radio - Bluetooth Compatible with USB and Aux In Ports - 2014 * 2 PlanetAudio Stereo Speakers - Salon * 2 Sony XS-MP1611 Stereo Speakers - Cockpit - 2014

C&C 99 - FAST FORWARD - RIG

- Masthead sloop rig; - Spars * Carbon fiber double spreader mast w/internal halyards * Black powder-coated aluminum boom * Carbon fiber spinnaker pole- Stainless steel wire standing rigging; inspected and serviced 2019- Harkin Tuff luff forestay - 2015- Mark IV roller furler - 2009 (not installed)- Cockpit deck mounted traveler- Forespar boom vang- Mechanical backstay adjuster- Single-line slab reefing led aft, one line for tack and clew- Internal 4:1 outhaul led aft to housetop winch and stopper- Two-part boom topping lift- All running rigging leads aft to cockpit

C&C 99 - FAST FORWARD - SAILS & CANVAS

Mainsails:- Doyle Main, Tri-Radial, 2014 *- Doyle Main, Dacron, 2005 (Like new) Headsails for Tuff Luff- Doyle Number 1 (155%), Tri-Radial, 2014 - Doyle Number 1 (155%), Tri-Radial, Backup, 2011 - North Number 2 (135%), Mylar, 2016 *- Doyle Number 3 (100%), Mylar, Never Used Headsail for Roller Furler- Doyle Number 2, Dacron (135%) (Like new) Spinnakers:- North Spinnaker (AP), 2014 - Doyle Spinnaker (Reacher), 2005 - Doyle Spinnaker (Running), 2005 Canvas:- Main sail cover - Black *- Head sail sock - Black* Currently on board

C&C 99 - FAST FORWARD - DECK & HULL

- Deck is a balanced composite laminate utilizing BPA epoxy resin, uni-directional "E"-glass reinforcement, and high strength/stiffness premium sealed balsa coring. - Deck coring windows are located at all hardware installations to maintain the watertight integrity of the deck coring. - Deck is locally reinforced at high load areas with additional plies of bidirectional "E"-glass reinforcement- Molded in aluminum backing plates are found on highly loaded deck hardware- Hull construction is a vacuum infused BPA epoxy, unidirectional "E" glass, and synthetic cored laminate locally reinforced with carbon fiber.- Synthetic foam coring is used for maximum impact resistance, stiffness, strength, and light weight. The cored hull also offers superior hull insulating properties, both thermal and acoustical- Hull to deck joint is secured with 1/4-20 stainless machine screws installed on 4" centers through the full-length 6061 T6 aluminum backing plate imbedded in the hull flange and sealed with 3M 5200 adhesive sealant, which exceeds the recommended installation requirements of the ABS scantling for offshore sailing yachts.- Structural fiberglass longitudinal and athwartship grid bonded to hull and deck, utilizing methylmethacrylate adhesives- 3,500 lb.(1588 kg), epoxy coated, lead, high-lift fin keel design- Keel area hull laminate is reinforced with multiple plies of high-tensile carbon-fiber unidirectional

reinforcements.- Stainless steel keel bolts- Elliptical, foam-cored rudder blade with unidirectional E-glass skins- Oversize 304 stainless steel rudder post- Forespar marelon thru-hull fittings throughout - Anchor locker, foredeck access- Fortress FX-16 Anchor w/chain & rode- 4 Harken 44 power ratio 2-speed self-tailing winches; cockpit, coming, port & starboard mounted- 2 Harken 32 power ratio 2-speed winches; cockpit, cabin top mounted, port & starboard- 3 Winch handles (1 onboard)- 2 Winch handle pockets, cockpit mounted- 2 Harken ball-bearing adjustable inboard genoa tracks and cars with adjustment lines led to cockpit- Stainless steel mast collar with stainless halyard organizer plates- 2 Harken deck turning blocks for aft-led halyards- Spinnaker sheets & twings- Headsail sheets- Lewmar Ocean Series size 60 aluminum foredeck hatch with fly screen- Lewmar Ocean Series size 30 aluminum main cabin vent hatch with fly screen- Lewmar size 10 vent hatch with fly screen- 3 Lewmar size 0 ports - Lexan sliding companionway hatch on aluminum and delrin glides- Marine grade polymer lockable companionway hatch board.- 4 Stainless steel hand holds, cabin top mounted, port & starboard- 4 Cleats; 2 at bow, 2 at stern- LPG locker, vented overboard, w/LPG tank (11 lbs) and solenoid cut off valve- Lazarette locker- Cockpit locker- Cockpit shower w/hot and cold running water- Deck scuppers- Stainless steel bow pulpit, port and starboard stern rails, connected by double life lines with port & starboard gates aft at cockpit - Navigation, running & anchor lights - Fuel fill; port side aft- Waste pumpout; port side midship- Water fill; starboard side, midship- Dock lines- Fenders

C&C 99 - FAST FORWARD - MECHANICAL

- Volvo Penta MD2020-D BT diesel engine, with SailDrive, 19 HP, fresh water cooled- Folding prop- Racor R12P fuel filter/water separator- Jabsco Par-Max 4 50 PSI house water pump; Model 31700-0092, 4.3 gpm- Jabsco Par-Max 4 bilge pump; model 21705-0592, 4.3 gpm- 3 Jabsco Pumpguard strainers; model 46200-0000- Stainless steel water heater, 6 gallon, operates on 120 VAC on engine near exchanger- Munster Simms MK V manual bilge pump, w/removeable handle; cockpit mounted

C&C 99 - FAST FORWARD - ELECTRICAL

- 12 vdc electrical system w/metered distribution panel- 120 vac electrical system w/110 Volt AC shore power with distribution panel- 120 vac outlets in all cabins, GFI protected- 12 vdc lighting in all cabins- Interior courtesy lighting- Chafe protected tinned copper wiring used throughout- 2 West Marine Batteries, 80 Ah, 810 MCA, model 15020191- Inteli-Power Marine Series Electronic Marine Converter/Charger, model PD2030- Battery master switch; under nav station- 30 Amp shore power receptacle; cockpit, port side aft- 30 Amp shore power cable - Bare copper bonding system includes, rigging, fuel tank and deck fitting, engine, and keel

C&C 99 - FAST FORWARD - SAFETY

- 3 Kiddie Dry Chemical fire extinguishers; Marine Type 1-A:10-B:C Size 1- 4 Near Shore Type II PFDs, Adult- Emergency tiller- Manual bilge pump

C&C 99 - FAST FORWARD - UPGRADES & MAINTENANCE

Complete maintenance log onboard 2009:- New Mark IV roller furler installed- Head rebuilt- Cabin sole replaced- Mast pulled & rechalked; standing rigging inspected- New batteries installed- New depth transducer installed 2011:- New batteries installed- New windex transducer installed- New navigation lights installed- Steaming light cage installed on mast- New spinnaker guy 2012:- Keel bolts inspected & torqued- Chainplates re-chalked- Winches cleaned & greased- Stanchions thru-bolted 2013:- New North Spinnaker- Halyard maintenance- Head serviced, parts replaced 2014:- New head sail halyard- New head sail sheets- Spinnaker pole rebuilt- New guy blocks - New wheel cover (leather)- New jib car members- New Sony Stereo & cockpit speakers installed 2015:- New batteries- New gear shifter installed- New backstay controls- New compass installed- New mainsail halyard- New aft shower covers- New Harkin tuff luff installed 2016:- New Lewmar forward hatch installed- Keel bolts inspected and torqued- New stove thermocouple installed 2017:- New cabin sole installed- New spinnaker car sheets 2019:- Rig pulled, standing rigging inspected/replaced where needed- Keel removed, inspected, reinstalled- Timber grid at keel reinforce/re-taped

DISCLAIMER

The Company offers the details of this vessel in good faith but cannot guarantee or warrant the accuracy of this information nor warrant the condition of the vessel. A buyer should instruct his agents, or his surveyors, to investigate such details as the buyer desires validated. This vessel is offered subject to prior sale, price change, or withdrawal without notice.

Exclusions

Owner's personal belongings.

Disclaimer

The Company offers the details of this vessel or yacht in good faith but cannot guarantee or warrant the accuracy of this information nor warrant the condition of the vessel. A buyer should instruct his representatives, agents, or his surveyors, to investigate such details as the buyer desires validated. This vessel or yacht is offered subject to prior sale, price change, or withdrawal without notice.

PHOTOS

C&C 99 - Fast Forward - 6



C&C 99 - Fast Forward - 1



C&C 99 - Fast Forward - 7



C&C 99 - Fast Forward - 9



C&C 99 - Fast Forward - 10



C&C 99 - Fast Forward - 11



C&C 99 - Fast Forward - 8



C&C 99 - Fast Forward - 12



C&C 99 - Fast Forward - 73



C&C 99 - Fast Forward - 13



C&C 99 - Fast Forward - 99



C&C 99 - Fast Forward - 42



C&C 99 - Fast Forward - 27



C&C 99 - Fast Forward - 32



C&C 99 - Fast Forward - 14



C&C 99 - Fast Forward - 62



C&C 99 - Fast Forward - 64



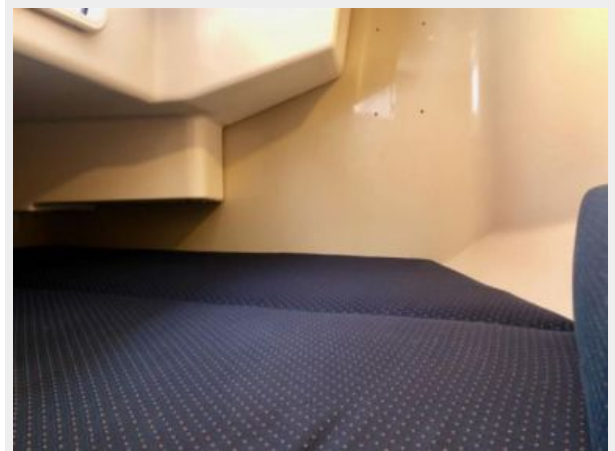
C&C 99 - Fast Forward - 66



C&C 99 - Fast Forward - 68



C&C 99 - Fast Forward - 72



C&C 99 - Fast Forward - 74



C&C 99 - Fast Forward - 40



C&C 99 - Fast Forward - 67

C&C 99 - Fast Forward - 16



C&C 99 - Fast Forward - 25



C&C 99 - Fast Forward - 65



C&C 99 - Fast Forward - 63



C&C 99 - Fast Forward - 54



C&C 99 - Fast Forward - 60



C&C 99 - Fast Forward - 36



C&C 99 - Fast Forward - 70



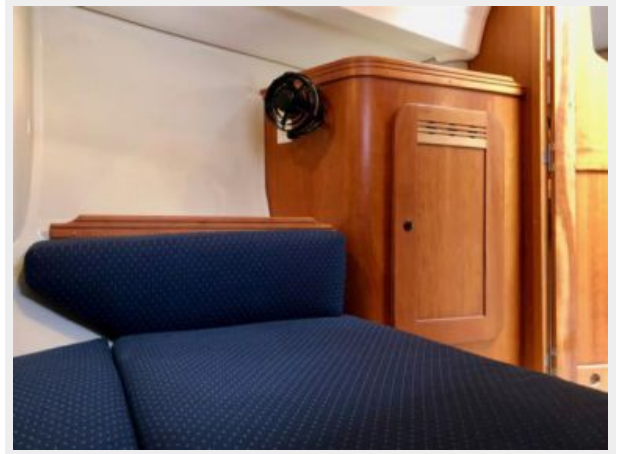
C&C 99 - Fast Forward - 38



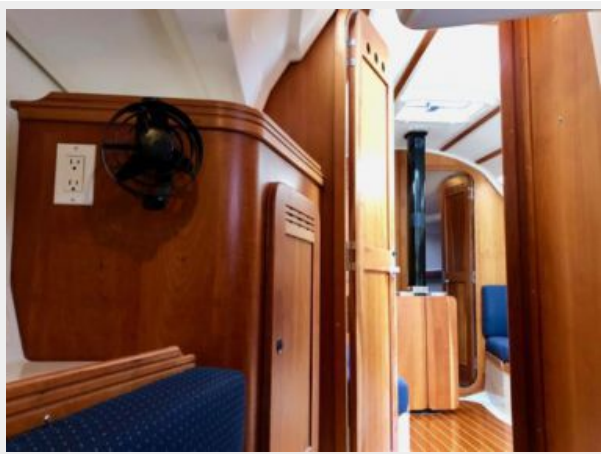
C&C 99 - Fast Forward - 26



C&C 99 - Fast Forward - 76



C&C 99 - Fast Forward - 75



C&C 99 - Fast Forward - 55



C&C 99 - Fast Forward - 77



C&C 99 - Fast Forward - 31



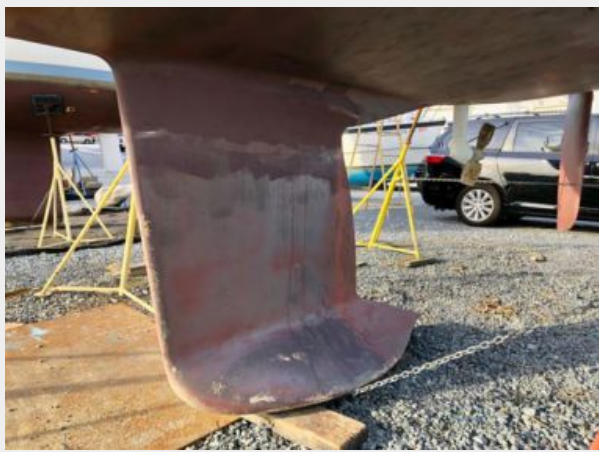
C&C 99 - Fast Forward - 41



C&C 99 - Fast Forward - 20



C&C 99 - Fast Forward - 89



C&C 99 - Fast Forward - 69



C&C 99 - Fast Forward - 43



C&C 99 - Fast Forward - 48



C&C 99 - Fast Forward - 50



C&C 99 - Fast Forward - 28



C&C 99 - Fast Forward - 100



C&C 99 - Fast Forward - 52



C&C 99 - Fast Forward - 53



C&C 99 - Fast Forward - 29



C&C 99 - Fast Forward - 24



C&C 99 - Fast Forward - 78



C&C 99 - Fast Forward - 71



C&C 99 - Fast Forward - 33



C&C 99 - Fast Forward - 59



C&C 99 - Fast Forward - 83



C&C 99 - Fast Forward - 22



C&C 99 - Fast Forward - 56



C&C 99 - Fast Forward - 84



C&C 99 - Fast Forward - 86



C&C 99 - Fast Forward - 81



C&C 99 - Fast Forward - 61



C&C 99 - Fast Forward - 79



C&C 99 - Fast Forward - 85



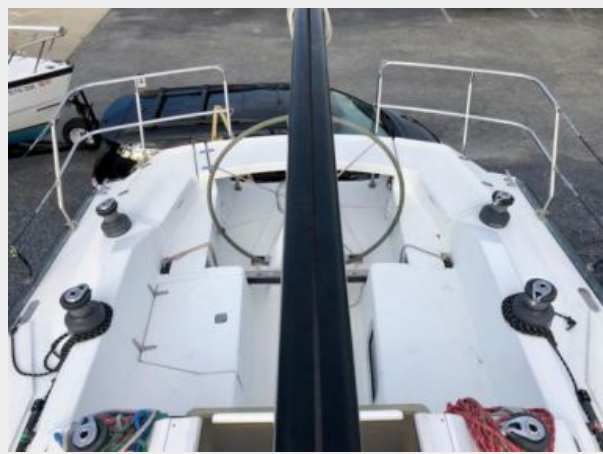
C&C 99 - Fast Forward - 21



C&C 99 - Fast Forward - 93



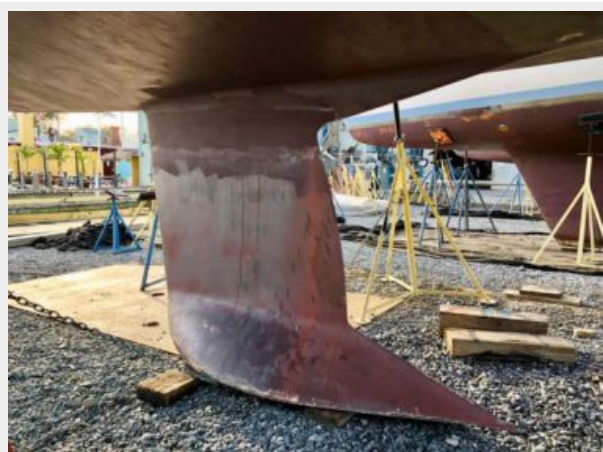
C&C 99 - Fast Forward - 37



C&C 99 - Fast Forward - 15



C&C 99 - Fast Forward - 88



C&C 99 - Fast Forward - 87



C&C 99 - Fast Forward - 51



C&C 99 - Fast Forward - 57



C&C 99 - Fast Forward - 58



C&C 99 - Fast Forward - 35



C&C 99 - Fast Forward - 19



C&C 99 - Fast Forward - 39



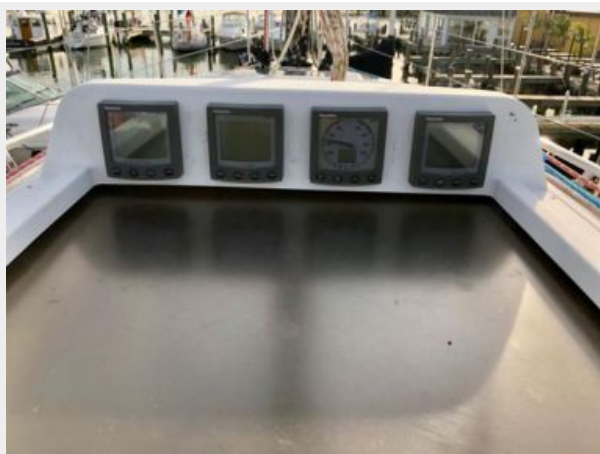
C&C 99 - Fast Forward - 82



C&C 99 - Fast Forward - 44



C&C 99 - Fast Forward - 46



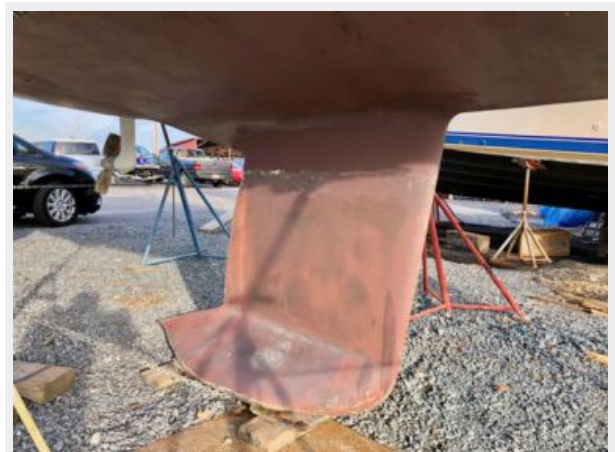
C&C 99 - Fast Forward - 47



C&C 99 - Fast Forward - 30



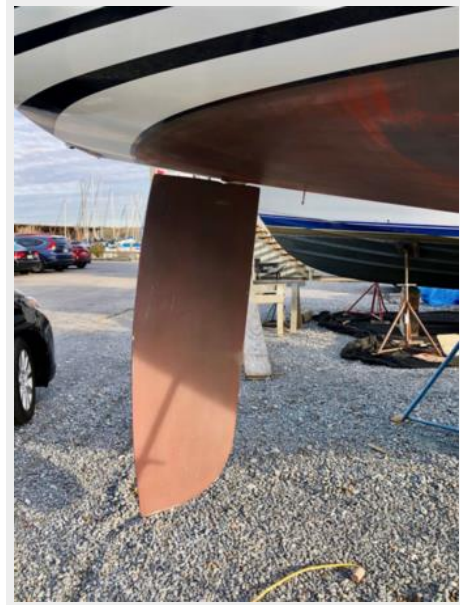
C&C 99 - Fast Forward - 91



C&C 99 - Fast Forward - 97



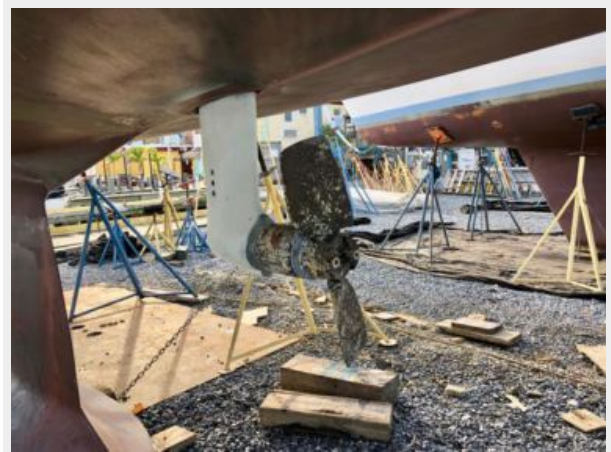
C&C 99 - Fast Forward - 98



C&C 99 - Fast Forward - 92



C&C 99 - Fast Forward - 95



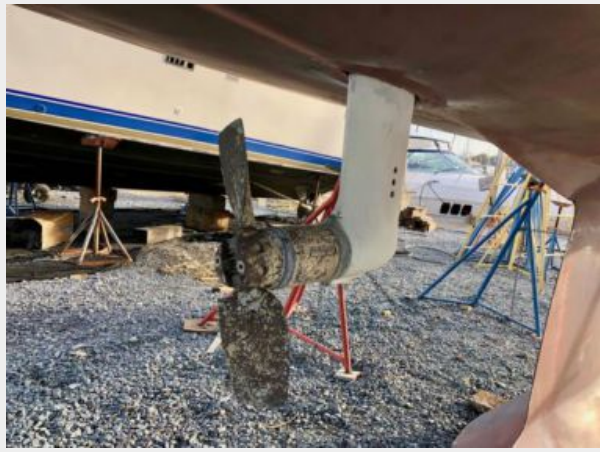
C&C 99 - Fast Forward - 34



C&C 99 - Fast Forward - 49



C&C 99 - Fast Forward - 94



C&C 99 - Fast Forward - 18



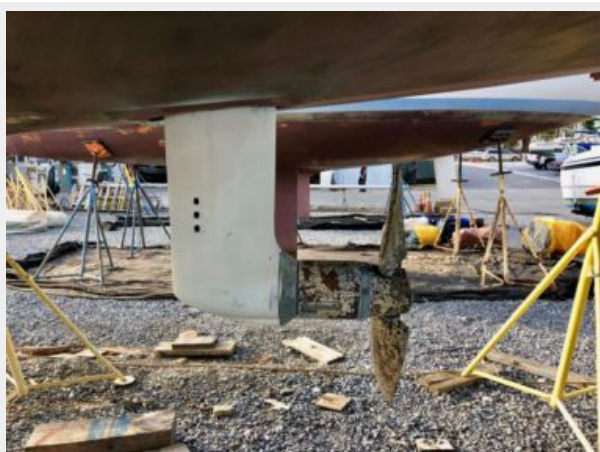
C&C 99 - Fast Forward - 80



C&C 99 - Fast Forward - 23



C&C 99 - Fast Forward - 96



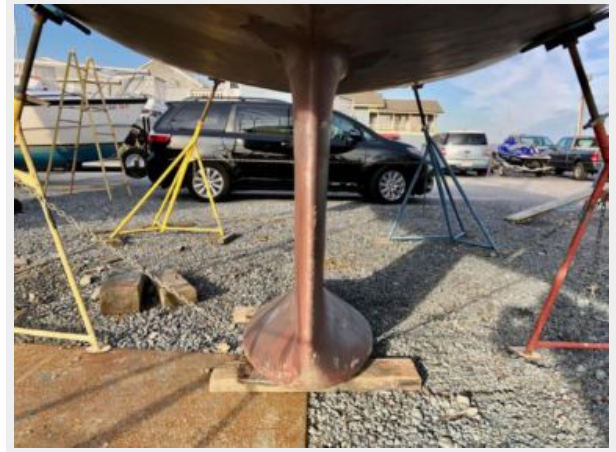
C&C 99 - Fast Forward - 45



C&C 99 - Fast Forward - 17



C&C 99 - Fast Forward - 90



CONTACTS

Andrey Shestakov, leading yacht broker of the sales department of Shestakov Yacht Sales Inc. Shestakov Yacht Sales Inc., the official representative of the Miami/Fort Lauderdale FL headquarters.

Contact details

Email: andrey@shestakovyachtsales.com

Web: shestakovyachtsales.com/en/

Telephones

USA: +1(954)274-4435

Office hours

Monday – Saturday: **9:00 - 21:00** EDT

Sunday: **closed**

Address



Harbour Towne Marina, 850 NE 3rd St,
STE 213, Dania, FL 33004