

AMBASSADOR — SUNSEEKER



Builder: SUNSEEKER

Year Built: 2012

Model: Motor Yacht

Price: PRICE ON APPLICATION

Location: Italy

LOA: 131' 5" (40.05m)

Beam: 26' 7" (8.09m)

Max Draft: 8' 11" (2.70m)

Cruise Speed: 13 Kts. (15 MPH)

Max Speed: 24 Kts. (28 MPH)

Our experienced yacht broker, Andrey Shestakov, will help you choose and buy a yacht that best suits your needs **Ambassador — SUNSEEKER** from our catalogue. Presently, at Shestakov Yacht Sales Inc., we have a wide variety of yachts available on our sale's list. We also work in close contact with all the big yacht manufacturers from all over the world.

If you would like to buy a yacht **Ambassador — SUNSEEKER** or would like help answering any questions concerning purchasing, selling or chartering a yacht, please call **+1(954)274-4435**

TABLE OF CONTENTS

TABLE OF CONTENTS	2
SPECIFICATIONS	4
Overview	4
Basic Information	4
Dimensions	4
Speed, Capacities and Weight	5
Accommodations	5
Hull and Deck Information	5
Engine Information	5
DETAILED INFORMATION	6
Ambassador	6
Exclusions	7
Disclaimer	7
PHOTOS	8
Ambassador SML	8
Aft Deck	8
Main Salon Entry	8
Main Salon Seating	8
Main Salon Dining	8
Interior Lobby	8
Galley	9
Master Cabin	9
Interior Staircase	9
Master Ensuite	9
Twin Guest Cabin Port	9
Twin Guest Cabin 1	9
Guest Cabin Ensuite	10
Guest Double Cabin 1	10

Guest Double Cabin 2	10
Lounge	10
Lounge	10
Aft Deck	10
Exterior Staircase	11
Sundeck Bar	11
Sundeck	11
Sundeck	11
Foredeck	12
Foredeck	12
Bridge	12
CONTACTS	13
Contact details	13
Telephones	13
Office hours	13
Address	13

SPECIFICATIONS

Overview

Ambassador is a 40.05m / 131ft 40 metre luxury motor yacht built in 2012 by Sunseeker, maintained in excellent cosmetic and technical condition. Her elegant exterior and interior styling are the work of Sunseeker, who is also responsible for her engineering. Ambassador is a perfect example of a high specification Sunseeker featuring many technical and cosmetic upgrades.

Her stunning interior décor features beautiful painted timber and veneer finishes in light grey throughout, with welcoming contemporary furnishing in muted tones, creating a calm, welcoming and truly luxurious atmosphere.

Ambassador offers accommodation for up to 10 guests in 5 suites, comprising 1 owner cabin, 2 double cabins, and 2 twin cabins. She is capable of carrying up to 7 crew onboard to ensure a relaxed luxury yacht experience.

This luxury semi-displacement motor yacht has a grp hull with a grp superstructure a beam of 8.09m / 27ft, a draft of 2.25m / 7ft and 3 decks made from teak. She features at anchor stabilisers which work at zero speed, increasing onboard comfort at anchor and underway.

Basic Information

Category: Motor Yacht

Sub Category: Motor Yacht

Model Year: 2012

Year Built: 2012

Country: Italy

Vessel Top: Electronic Sunroof

Cockpit: Yes

Dimensions

LOA: 131' 5" (40.05m)

Beam: 26' 7" (8.09m)

Max Draft: 8' 11" (2.70m)

Speed, Capacities and Weight

Cruise Speed: 13 Kts. (15 MPH)

Cruise Speed Range: 1500

Max Speed: 24 Kts. (28 MPH)

Displacement: 416673.67518 Pounds

Gross Tonnage: 338 Pounds

Water Capacity: 1307.6516574 Gallons

Fuel Capacity: 5719.3249258 Gallons

Accommodations

Total Cabins: 5

Sleeps: 11

Total Heads: 7

Crew Sleeps: 7

Hull and Deck Information

Hull Material: GRP

Deck Material: Teak

Hull Color: Blue

Engine Information

Engines: 2

Manufacturer: MTU

Model: 12V 4000 M93

Fuel Type: Diesel

DETAILED INFORMATION

Ambassador

Ambassador is a 40.05m / 131ft luxury motor yacht built in 2012, maintained in excellent cosmetic and technical condition. Her elegant exterior and interior styling are all the work of Sunseeker, who is also responsible for her engineering. Ambassador is a perfect example of a high specification Sunseeker featuring many technical and cosmetic upgrades.

This luxury semi-displacement motor yacht has a grp hull with a grp superstructure a beam of 8.09m / 27ft, a draft of 2.25m / 7ft and 3 decks made from teak. She features at anchor stabilisers which work at zero speed, increasing onboard comfort at anchor and underway.

Her stunning interior décor features beautiful painted timber and veneer finishes in light grey with welcoming contemporary furnishing in muted tones, complimented by accents of marble and pristine metal surfaces which blend seamlessly to create a luxurious and welcoming atmosphere. Electric blinds throughout the yacht add an additional sense of luxury and privacy.

The main deck has a number of customisable features, from the optional sliding door and balcony on the starboard side to the comfortable seating, which is modular and can be easily arranged to suit any occasion. There is also an external TV on the upper deck and main deck aft seating areas, an additional upgrade that gives guests the option of further entertainment onboard.

The Galley is highly upgraded and in superb condition, ensuring fine dining and delicious fresh food daily is the norm onboard, which is further facilitated by a dumbwaiter that serves both the main and upper decks. Another great feature is the huge 'sub-zero' wine cooler in the upper deck pantry, alongside a small under counter wine fridge on the main deck, ensuring beverages are kept chilled, ready and waiting on hot summer days.

Ambassador offers accommodation for up to 11 guests in 5 suites, comprising 1 owner cabin, 2 double cabins, and 2 twin cabins. In both twin cabins the beds can convert into a double giving guests flexibility and choice. The starboard cabin features the extra Pullman. Both VIP double cabins have the benefit of pop up TVs in the cabinetry and feature spacious ensuites.

Ambassador features a brilliant range of entertainment and recreational amenities. Toys include 1 Williams 565 jet (larger than normal for this model) and 2 Seadoos. The sundeck features retractable awning on the upper deck aft, and also on the sundeck both forward and aft, providing plenty of shade, perfect for relaxation. The sundeck also features a jacuzzi, also covered by retractable awning, as well as a forward bar and sun pad area, complete with an ice maker and fridge. All of these fabulous attributes are complimented by a state-of-the-art Bose music system, audible throughout the entire yacht (interior and exterior), an exclusive upgrade from the shipyard.

Capable of carrying up to 8 crew onboard, Ambassador is suitably crewed to ensure a relaxed

luxury yacht experience. She features a large double captain's cabin ideal for a couple, 3 bunk cabins for crew and 1 single cabin (or small double). Laundry facilities are located in the engine room passageway and include 1 washer and 1 dryer, typical of the SS131 Sunseeker model.

Exclusions

Owner's personal belongings.

Disclaimer

The Company offers the details of this vessel or yacht in good faith but cannot guarantee or warrant the accuracy of this information nor warrant the condition of the vessel. A buyer should instruct his representatives, agents, or his surveyors, to investigate such details as the buyer desires validated. This vessel or yacht is offered subject to prior sale, price change, or withdrawal without notice.

PHOTOS

Ambassador SML



Aft Deck



Main Salon Entry



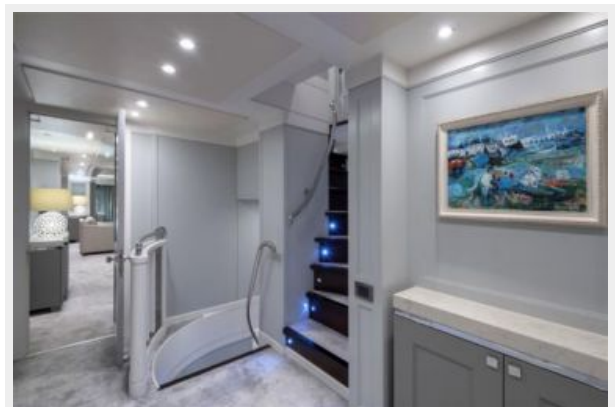
Main Salon Seating



Main Salon Dining



Interior Lobby



Galley



Master Cabin



Interior Staircase



Master Ensuite



Twin Guest Cabin Port



Twin Guest Cabin 1



Guest Cabin Ensuite



Guest Double Cabin 1



Guest Double Cabin 2



Lounge



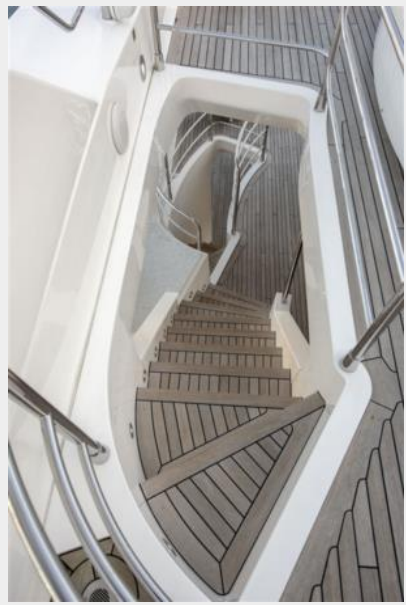
Lounge



Aft Deck



Exterior Staircase



Sundeck Bar



Sundeck



Sundeck



Foredeck



Foredeck



Bridge



CONTACTS

Andrey Shestakov, leading yacht broker of the sales department of Shestakov Yacht Sales Inc. Shestakov Yacht Sales Inc., the official representative of the Miami/Fort Lauderdale FL headquarters.

Contact details

Email: andrey@shestakovyachtsales.com

Web: shestakovyachtsales.com/en/

Telephones

USA: +1(954)274-4435

Office hours

Monday – Saturday: **9:00 - 21:00** EDT

Sunday: **closed**

Address



Harbour Towne Marina, 850 NE 3rd St,
STE 213, Dania, FL 33004