

HPKNOTIQ — SEA RAY



Builder: SEA RAY

LOA: 37' 0" (11.28m)

Year Built: 1997

Model: Cruiser

Price: PRICE ON APPLICATION

Location: United States

Our experienced yacht broker, Andrey Shestakov, will help you choose and buy a yacht that best suits your needs **HPKNOTIQ — SEA RAY** from our catalogue. Presently, at Shestakov Yacht Sales Inc., we have a wide variety of yachts available on our sale's list. We also work in close contact with all the big yacht manufacturers from all over the world.

If you would like to buy a yacht **HPKNOTIQ — SEA RAY** or would like help answering any questions concerning purchasing, selling or chartering a yacht, please call **+1(954)274-4435**

TABLE OF CONTENTS

TABLE OF CONTENTS	2
SPECIFICATIONS	5
Overview	5
Basic Information	5
Dimensions	5
Accommodations	5
Hull and Deck Information	5
Engine Information	5
DETAILED INFORMATION	6
Vessel Description	6
Equipment List	6
Disclaimer	9
Exclusions	9
Disclaimer	9
PHOTOS	10
2	10
3	10
4	10
5	10
6	11
7	11
8	11
9	11
10	11
11	11
12	12
13	12
14	12

15	12
16	12
17	12
18	13
19	13
20	13
21	13
22	13
23	13
24	14
25	14
26	14
27	14
28	14
29	14
30	15
31	15
32	15
33	15
34	15
35	15
36	16
37	16
38	16
39	16
40	16
41	16
42	17
43	17

44	17
45	17
46	17
47	17
48	18
CONTACTS	19
Contact details	19
Telephones	19
Office hours	19
Address	19

SPECIFICATIONS

Overview

Here is a great opportunity to pick up a wide beam, diesel powered, express cruiser with hardtop, Sea Deck flooring in the cockpit , new Kohler Generator and new Raymarine Axiom Series touch screen electronics package. Priced to sell quickly....Call today for more details.

Basic Information

Category: Cruiser

Sub Category: Express

Model Year: 1997

Year Built: 1997

Country: United States

Dimensions

LOA: 37' 0" (11.28m)

Accommodations

Total Cabins: 1

Hull and Deck Information

Hull Material: Fiberglass

Engine Information

Engines: 2

Manufacturer: Caterpillar

Model: 3116TA

Engine Type: Inboard

Fuel Type: Diesel

DETAILED INFORMATION

Vessel Description

The Sea Ray 370 Express Cruiser has a wide-open dual-level cockpit design, raised bridgedeck, and wide 14-foot 2-inch beam to provide a dry and safe ride. The 370 Express Cruiser has an aggressive power plant - 350 horsepower twin Caterpillar 3116 Diesel inboards with fresh water cooling. Combined with a 350 gallon fuel capacity, that means it can go anywhere, and quickly. On the bridgedeck, a power adjustable double helm seat, and portside double helm seat with aft-facing seat provide the captain and guests with a view and comfort. The captain also has full command of a host of technical and safety features like a new touch screen Raymarine electronics package, high water bilge pumps and alarm, plus a digital LCD systems monitor for engine diagnostics and pump monitoring. Even the dash itself has a tan gelcoat with rich burl wood accents. If fishing is the order of the day, the lower deck area features a large insulated in-floor fish box with hinged lids and pump-out to hold a sizable catch. There are four rod holders and a foldaway aft seat in the cockpit area to allow extra room for battling game when needed. The Sea Ray 370 Express Cruiser even has an entertainment center that also functions as a bait prep station with wetbar, sink, cooler, cutting board, icemaker and convenient trash receptacle. Below, the cabin offers an amazing amount of storage space and room for four adults to relax without feeling cramped. The forward stateroom has a full-size bed and plenty of mirrored storage areas. In the dinette - salon area the convertible dinette can be used for sleeping space by simply stowing the table in its dedicated compartment. The list of standard features also includes granite-look countertops, deep-pile marine-grade carpet, handcrafted wood trim, and even a Clarion AM-FM digital cassette stereo with six-disc CD changer, amplifier, subwoofer, eight speakers, and a cockpit remote control. All extra gear is neatly hidden in the salon floor compartment with fold-down rod racks. The stylish galley on the 370 Express Cruiser boasts beautiful cabinetry and includes a flush-mounted two-burner electric stove, new dual voltage refrigerator, microwave, coffee maker, fiberglass countertop with Corian cutting board, and Grohe faucet. In the head area, there's a VacuFlush head with fiberglass settee, Corian vanity top, sink and storage, as well as a fiberglass shower with sliding curved acrylic door. The 370 Express Cruiser comes with an air conditioning and heating system, emergency start, windlass, fiberglass swim platform, and the upgrade hardtop with sunbrella and isinglass enclosure. And for peace of mind, the 370 Express Cruiser has a new Kohler 8.5kw (2018) generator with muffler, plus an electric cockpit sole that raises the entire upper cockpit area for fast, easy engine access when needed.

Equipment List

- Sea Ray 370 Express Cruiser Specifications - Standard Equipment Hull and Deck
- 316 Stainless Steel Bow Rail
- 316 Stainless Steel Handrails
- 4-Bolt Stainless Steel Cleats (8)

- Anchor Rope Storage with Hatch
- Boot Stripes
- Bottom Paint
- Brass-Threaded Garboard Drain Plug
- Fiberglass Swim Platform with Concealed Stainless Steel Ladder
- Gel-Coated Bilge Area
- High Performance Vinylester Resin
- Integral Deck Ventilators
- Lofrans Progress I Rope - Chain Windlass with Foot Switches Navigation Lights
- PVC Rub Rail with Stainless Steel Insert
- Rod Holders (4) - Stainless Steel Deck Fill Plates - Stainless Steel Hull Windows (4)
- Translucent Deck Hatches (3) with Locks and Sky Screen Covers
- Vac Pac - Welded Stainless Steel Stanchions Cockpit - Cockpit Side Panel Storage -
- Indirect Cockpit Lighting - Insulated Engine Compartment
- Self-Bailing Fiberglass Dual-Level Cockpit with Raised Bridge Deck
- Cockpit Bridge Deck - 120V Outlet - Burl Instrument Panel with Wood-Accent Wheel - Chart Holder - Electrically Actuated Cockpit Sole Raises for Engine Access
- Portside Double Helm Seat Facing Aft with Fiberglass Storage Base
- Power Adjustable Double Helm Seat with Fiberglass Base
- Stainless Steel Grab Rails
- Bait Prep - Entertainment Center - Cockpit Icemaker, Insulated Cooler - Cutting Board - Trash Receptacle - Wetbar with Sink Cockpit Lower Deck
- Foldaway Aft Seat - Freshwater Washdown Faucet
- Large Insulated In-Floor Storage Box with Hinged Lids and Pump-Out
- Molded Fiberglass Boarding Steps - Molded Fiberglass Transom Door Cabin
- 12V Clarion AM-FM Digital Cassette Stereo, 6-Disc CD Changer, Amplifier, Subwoofer with 8 Speakers and Cockpit Remote Control - 12V Halogen Lighting - 12V Indirect Lighting - 120V Outlets Throughout
- Acrylic Sliding Cabin Door - Central Vacuum System (120V - 60 Cycle)
- Granite-Colored Countertops & Tables
- Handcrafted Wood Trim - In-Floor Rod Storage with Fold-Down Rod Racks
- Interior Sunbrella Carpet Runners - 120V Fluorescent Lighting - 120V - 12V Refrigerator (7.1 cubic feet) new 2019
- Bottle Storage - Fiberglass Countertop with Corian Cutting Board and Grohe Faucet
- Flush-Mount Two-Burner Electric Stove - Galley Storage and Drawers with Glass & Plate Storage and Cutlery Insert
- Microwave Oven - Spacemaker Coffeemaker (120V - 60 Cycle)
- Stainless Steel Handrail - Stainless Steel Stove Rail - Trash Chute with Concealed Removable Trash Can
- Dinette - Salon - 120V Fluorescent Lighting - 120V Outlet - Convertible Dinette with Storage Beneath - Dining Table with Designated Storage - Upper Storage Cabinet
- Antenna and TV Coaxial to Dockside - 120V Outlet - Drawers and Storage Under Bed
- Full-Size Bed with Pillows, Sheets and Coordinated Spread - Hanging Lockers with Mirrored Doors - Mirrored Rope Locker Bulkhead - Side Shelf Storage - V-Berth Privacy

Door

- Head and Vanity - Corian Vanity Top with Sink and Storage Below - Fiberglass Shower Stall with Curved Acrylic Shower Door - Holding Tank and Level Indicators - Linen Closet - Mirrored Medicine Cabinet - Stainless Steel Handrail - VacuFlush Head - Wall Mirror
- Windshield and Canvas
- Opening Stainless Steel Port Lights (2) - Stainless Steel Handrails - Stainless Steel Windshield with Curved Tri-Section Tinted Glass and Electric Front Vent - Windshield Wipers (2) - Front Curtains - Side Curtains
- Technical- 120V-30 Amp-12V Converter - 50 Amp Electronics Circuit with Ground Plate - ACR Remote Control Spotlight
- Aluminum Fuel Tanks with Filters, Anti-Siphon Valves and Electric Senders -
- Anchor Washdown Hookup - Automatic Bilge Pumps (2) - Backlit Switch Panel with Illuminated Weatherproof Rocker Switches and Dimmer Control - Batteries (5) with Trays and Switches - Bilge Lights - Bilge Washdown Faucet - Cabin High Water Alarm and Pump - Color-Coded Wiring with Chafe Protection - Compass - Concealed Dual Horns
- Custom Sea Ray Backlit Instrumentation with Low Glare Blue Night Lighting - Digital LCD Systems Monitor for Engine - Diagnostics and Pump Monitoring - Dual (30 Amp - 120V - 60 Cycle) Dockside Power with 50-foot Cord, Adapter and Main Distribution Panel - Dual Gear Shift & Throttle Controls - Electric Bilge Blowers (2) - Emergency Start System - Engine Alarms (Water, Oil and Transmission Oil) - Engine Synchronizer Gauge - Freshwater Washdown with Cockpit Shower and Dockside Water Inlet - Galvanic Isolators - Ground Fault-Protected Outlets - Halon System - Hydraulic Steering with Tilt Wheel - Main DC Breaker Panel
- Power Vents in Head and Galley
- Pressure Water System and 6-Gallon Water Heater with Exchanger
- Racor Filters - Heat Exchanger and Fuel Shutoff Valves
- Remote Circuit Breaker Panel - Shower Sump Pump and Float Switch - Systems Monitor Panel - Tachometers with Hour meters
- Generator - Remote Start - Muffler, Freshwater Cooling, Fuel Filter and Seawater Strainer - 120V - 60 Cycle 8.5kw Kohler Generator (2018)
- Air Conditioning and Heating - 16,000 BTU - 1 1/2-Tons (120V - 60 Cycle)
- Raymarine Axiom Series (2018) Electronics
- VHF Radio - 220 with Remote Speaker and 8-foot Antenna
- Underwater Gear - Bonding System - Dripless Shaft Logs
- Hydraulic Trim Tabs
- Manganese-Bronze Rudders and Struts - Bronze Alloy 4 Blade Propellers - Seacocks On All Underwater Fittings - Seawater Strainers - Stainless Steel Prop Shafts
- Engines Twin Caterpillar 3116TA Diesels 350 HP Inboards with Freshwater Cooling
- Sea Deck Synthetic Teak Decking
- All Chain with Windlass in lieu of Rope
- Cockpit Combing Pads
- Fiberglass Hardtop with Enclosure
- Gray Water System - Large Rod Holders (4) Live Baitwell System - Macerator with Seacock Interlock System

- Seawater Washdown System
- EPIRB

Disclaimer

The Company offers the details of this vessel in good faith but cannot guarantee or warrant the accuracy of this information nor warrant the condition of the vessel. A buyer should instruct his agents, or his surveyors, to investigate such details as the buyer desires validated. This vessel is offered subject to prior sale, price change, or withdrawal without notice.

Exclusions

Owner's personal belongings.

Disclaimer

The Company offers the details of this vessel or yacht in good faith but cannot guarantee or warrant the accuracy of this information nor warrant the condition of the vessel. A buyer should instruct his representatives, agents, or his surveyors, to investigate such details as the buyer desires validated. This vessel or yacht is offered subject to prior sale, price change, or withdrawal without notice.

PHOTOS

2



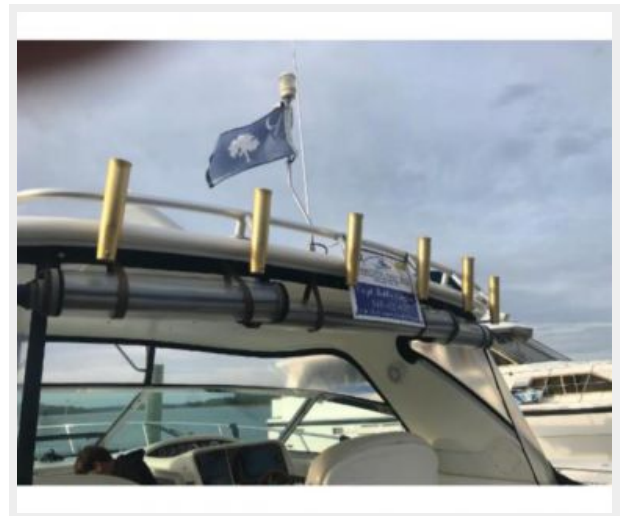
3



4



5



6



7



8



9



10



11



12



13



14



15



16



17



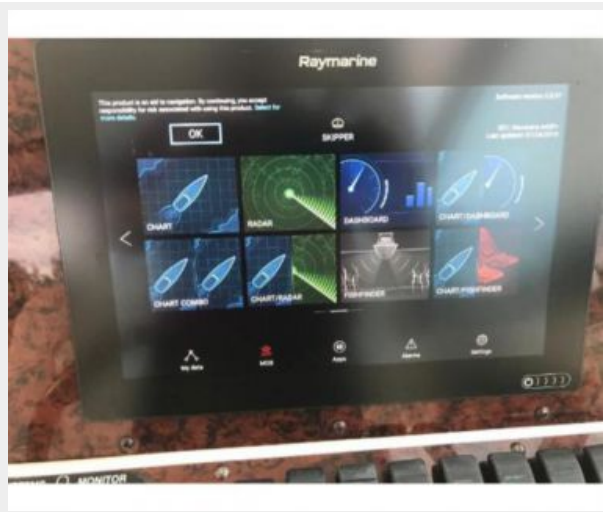
18



19



20



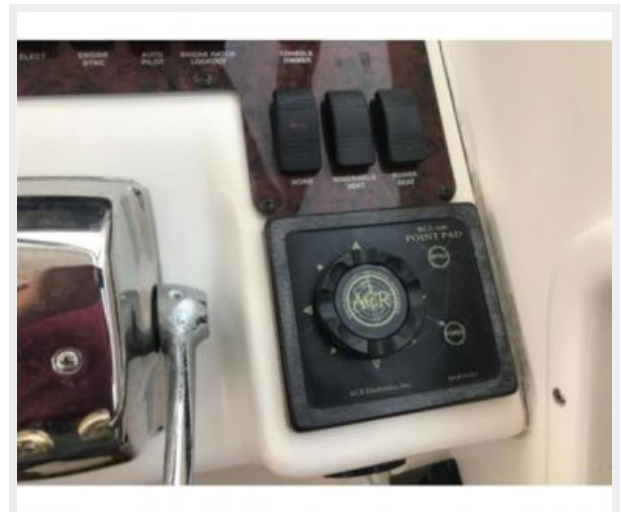
21



22



23



24



25



26



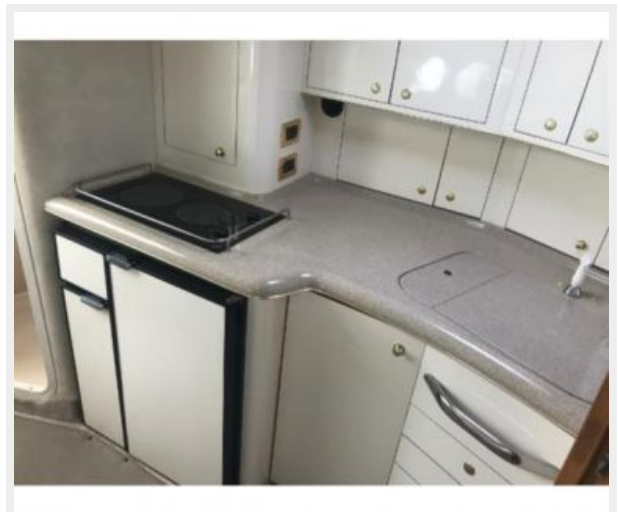
27



28



29



30



31



32



33



34



35



36



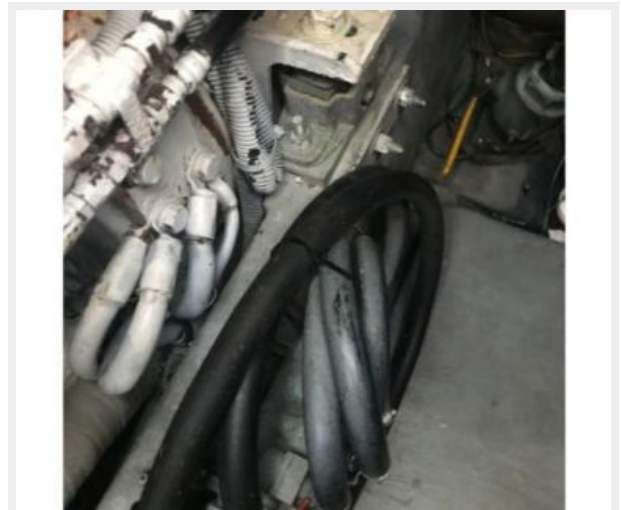
37



38



39



40



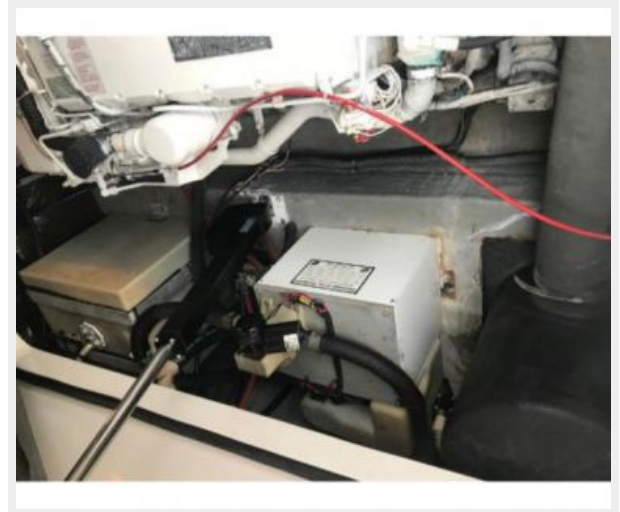
41



42



43



44



45



46



47



48



CONTACTS

Andrey Shestakov, leading yacht broker of the sales department of Shestakov Yacht Sales Inc. Shestakov Yacht Sales Inc., the official representative of the Miami/Fort Lauderdale FL headquarters.

Contact details

Email: andrey@shestakovyachtsales.com

Web: shestakovyachtsales.com/en/

Telephones

USA: +1(954)274-4435

Office hours

Monday – Saturday: **9:00 - 21:00** EDT

Sunday: **closed**

Address



Harbour Towne Marina, 850 NE 3rd St,
STE 213, Dania, FL 33004