

THE BLESSING — SILVERTON



Builder: SILVERTON

Year Built: 2000

Model: Motor Yacht

Price: PRICE ON APPLICATION

Location: United States

LOA: 35' 0" (10.67m)

Beam: 13' 0" (3.96m)

Max Draft: 3' 3" (0.99m)

Cruise Speed: 8 Kts. (9 MPH)

Our experienced yacht broker, Andrey Shestakov, will help you choose and buy a yacht that best suits your needs **The Blessing — SILVERTON** from our catalogue. Presently, at Shestakov Yacht Sales Inc., we have a wide variety of yachts available on our sale's list. We also work in close contact with all the big yacht manufacturers from all over the world.

If you would like to buy a yacht **The Blessing — SILVERTON** or would like help answering any questions concerning purchasing, selling or chartering a yacht, please call **+1(954)274-4435**

TABLE OF CONTENTS

TABLE OF CONTENTS	2
SPECIFICATIONS	5
Overview	5
Basic Information	5
Dimensions	5
Speed, Capacities and Weight	5
Accommodations	6
Hull and Deck Information	6
Engine Information	6
DETAILED INFORMATION	7
MAIN DESCRIPTION	7
MANUFACTURER PROVIDED DESCRIPTION	7
UPDATES	7
OUTSIDE FEATURES	7
Electronics	8
DISCLAIMER	8
Exclusions	8
Disclaimer	8
PHOTOS	9
12.3 The Blessing 2000 Silverton 352 Electronics 3	9
12.4 The Blessing 2000 Silverton 352 Electronics 4	9
4.3 The Blessing 2000 Silverton 352 Windalss	9
2 The Blessing 2000 Silverton 352 at anchor	9
12.1 The Blessing 2000 Silverton 352 Electronics 1	10
1 The Blessing 2000 Silverton 352 at anchor 2	10
14 The Blessing 2000 Silverton 352 Flybridge Seating 1	10
34 The Blessing 2000 Silverton 352 Aft Shower and Sink	10
15 The Blessing 2000 Silverton 352 Flybridge Seating 2	11

4 The Blessing 2000 Silverton 352 Port View 1	11
40 The Blessing 2000 Silverton 352 Engine Room 6	11
17 The Blessing 2000 Silverton 352 Fwd Salon	11
12.2 The Blessing 2000 Silverton 352 Electronics 2	12
12.5 The Blessing 2000 Silverton 352 Electronics 5	12
9 The Blessing 2000 Silverton 352 Wet Bar	12
12.6 The Blessing 2000 Silverton 352 Electronics 6	12
28 The Blessing 2000 Silverton 352 Forward Stateroom	13
27 The Blessing 2000 Silverton 352 Forward Cabin	13
29 The Blessing 2000 Silverton 352 Forward head	13
30 The Blessing 2000 Silverton 352 Forward Shower and Head	13
33 The Blessing 2000 Silverton 352 Aft Cabin	14
39 The Blessing 2000 Silverton 352 Engine Room 5	14
16 The Blessing 2000 Silverton 352 Salon Overview	14
41 The Blessing 2000 Silverton 352 Engine Room 7	14
6 The Blessing 2000 Silverton 352 Aft Deck to Cabin Entry	15
41.2 The Blessing 2000 Silverton 352 Waterheater	15
42 The Blessing 2000 Silverton 352 Aft View with Dinghy	15
4.2 The Blessing 2000 Silverton 352 Anchor Chain Locker	15
18 The Blessing 2000 Silverton 352 Forward View from Salon	16
20 The Blessing 2000 Silverton 352 Port Side Salon	16
19 The Blessing 2000 Silverton 352 Galley 1	16
20.1 The Blessing 2000 Silverton 352 Starboard Salon View	16
23 The Blessing 2000 Silverton 352 Aft View of Salon	17
24 The Blessing 2000 Silverton 352 Companionway 2	17
13 The Blessing 2000 Silverton 352 Helm Seating 1	17
25 The Blessing 2000 Silverton 352 Aft Salon	17
13.1 The Blessing 2000 Silverton 352 Helm Seating	18
10 The Blessing 2000 Silverton 352 Helm 3	18

32 The Blessing 2000 Silverton 352 Aft Berth 2	18
31 The Blessing 2000 Silverton 352 Aft Berth	18
35 The Blessing 2000 Silverton 352 Engine Room 1	19
11 The Blessing 2000 Silverton 352 Helm 2	19
37 The Blessing 2000 Silverton 352 Engine Room 3	19
36 The Blessing 2000 Silverton 352 Engine Room 2	19
38 The Blessing 2000 Silverton 352 Engine Room 4	19
41.1 The Blessing 2000 Silverton 352 Generator	19
8 The Blessing 2000 Silverton 352 Bridge Access	20
3 The Blessing 2000 Silverton 352 Starboard View	20
5 The Blessing 2000 Silverton 352 Aft Cabin Exit door	20
21 The Blessing 2000 Silverton 352 Salon Seating	20
7 The Blessing 2000 Silverton 352 Aft Deck 1	21
26 The Blessing 2000 Silverton 352 Companionway	21
22 The Blessing 2000 Silverton 352 Dinette	21
12 The Blessing 2000 Silverton 352 Helm 1	21
4.1 The Blessing 2000 Silverton 352 SideWalk	22
39.1 The Blessing 2000 Silverton 352 Drive shaft	22
43 The Blessing 2000 Silverton 352	22
44 2000 Silverton 352 Mfg image	22
CONTACTS	23
Contact details	23
Telephones	23
Office hours	23
Address	23

SPECIFICATIONS

Overview

A "Great Loop" veteran she is among the largest 35 motor yachts ever built, these boats are over 41' long, 13' wide and have more interior volume than most 40s. The interior floorplan offers a very roomy and comfortable salon, dinette and galley that blend together well. Lots of teak trim and ultraleather furniture. There are two staterooms with double berths as well as two full heads, both with showers, again rare in this size boat. As if two berths isn't enough the couch in the salon also makes into a double berth. The Blessing has to be among the nicest of these available. Delivered new to Nashville she was kept undercover in fresh water until she began her "loop" last fall. In the past year she has completed "the loop" and even made a trip to the Bahamas. Her fuel injected 330 hp Mercruiser inboards have only 1614 original hours and her 7.3 Kohler generator has 1294 hours. 1mpg @ 1500rpm A dinghy and Davit were added in the last 6 months and are not included but negotiable.

Basic Information

Category: Motor Yacht

Model Year: 2000

Year Built: 2000

Country: United States

Dimensions

LOA: 35' 0" (10.67m)

Beam: 13' 0" (3.96m)

Max Draft: 3' 3" (0.99m)

Clearance: 16' 2" (4.93m)

Speed, Capacities and Weight

Cruise Speed: 8 Kts. (9 MPH)

Water Capacity: 100 Gallons

Holding Tank: 68 Gallons

Fuel Capacity: 286 Gallons

Accommodations

Total Cabins: 2

Total Berths: 3

Total Heads: 2

Hull and Deck Information

Hull Material: Fiberglass

Engine Information

Engines: 2

Manufacturer: Mercruiser

Model: Crusader 7.4 L MPI

Engine Type: Inboard

Fuel Type: Gas/Petrol

DETAILED INFORMATION

MAIN DESCRIPTION

A "Great Loop" veteran she is among the largest 35 motor yachts ever built, these boats are over 41' long, 13' wide and have more interior volume than most 40s. The interior floorplan offers a very roomy and comfortable salon, dinette and galley that blend together well. Lots of teak trim and ultraleather furniture. There are two staterooms with double berths as well as two full heads, both with showers, again rare in this size boat. As if two berths isn't enough the couch in the salon also makes into a double berth. The Blessing has to be among the nicest of these available. Delivered new to Nashville she was kept undercover in fresh water until she began her "loop" last fall. In the past year she has completed "the loop" and even made a trip to the Bahamas. Her fuel injected 330 hp Mercruiser inboards have only 1614 original hours and her 7.3 Kohler generator has 1294 hours. 1mpg @ 1500rpm A dinghy and Davit were added in the last 6 months and are not included but negotiable.

MANUFACTURER PROVIDED DESCRIPTION

The Silverton 352 Motor Yacht follows the tremendously successful big sister 392. Silverton took all the features that made the 392 a hit and scaled them back to the 352. Silverton's unique "SideWalk" steps allow freedom of movement from the bridge to foredeck. Cumbersome ladders have been replaced by wide molded steps and a high toe kick. Sturdy oversize stainless steel rails will keep passengers safe and secure even in a seaway. The center console flybridge will accommodate a crowd, while the standard aft hardtop makes entertaining and relaxing easy.

UPDATES

Updates in 2017 include fresh bottom paint new props plus spares Update in 2018/2019 include, 5 new batteries new VHF/AIS receiver radio repacked rudder shafts replaced raw water pumps impellers and tune-ups new windlass motor 50' Chain w/ 400' rope rod renew macerator pump new thermostat and element on water heater new port side alternator new forward bilge pump all LED lighting updated GARMIN charts waterproofed Bimini All service is up to date, she is ready to go.

OUTSIDE FEATURES

Outside features include Simpson Lawrence windlass with new motor Jabsco Spotlight Bimini top with full bridge and aft deck enclosure fiberglass hardtop radar mast molded fiberglass staircase from swim platform to the aft deck wet bar w/ icemaker.

Electronics

Electronics include Garmin GPSMap 431 chartplotterRaytheon 210 VHF radioRaytheon Raydata depthfinder/ speedometerRitchie compassJVC stereoFlatpanel tvs with dvd players in the salon and both staterooms

DISCLAIMER

The Company offers the details of this vessel in good faith but cannot guarantee or warrant the accuracy of this information nor warrant the condition of the vessel. A buyer should instruct his agents, or his surveyors, to investigate such details as the buyer desires validated. This vessel is offered subject to prior sale, price change, or withdrawal without notice.

Exclusions

Owner's personal belongings.

Disclaimer

The Company offers the details of this vessel or yacht in good faith but cannot guarantee or warrant the accuracy of this information nor warrant the condition of the vessel. A buyer should instruct his representatives, agents, or his surveyors, to investigate such details as the buyer desires validated. This vessel or yacht is offered subject to prior sale, price change, or withdrawal without notice.

PHOTOS

12.3 The Blessing 2000 Silverton 352
Electronics 3



12.4 The Blessing 2000 Silverton 352
Electronics 4



4.3 The Blessing 2000 Silverton 352
Windlass



2 The Blessing 2000 Silverton 352 at anchor



**12.1 The Blessing 2000 Silverton 352
Electronics 1**



**1 The Blessing 2000 Silverton 352 at anchor
2**



**14 The Blessing 2000 Silverton 352
Flybridge Seating 1**



**34 The Blessing 2000 Silverton 352 Aft
Shower and Sink**



4 The Blessing 2000 Silverton 352 Port View

1



**15 The Blessing 2000 Silverton 352
Flybridge Seating 2**



**40 The Blessing 2000 Silverton 352 Engine
Room 6**



**17 The Blessing 2000 Silverton 352 Fwd
Salon**



12.2 The Blessing 2000 Silverton 352 Electronics 2



12.5 The Blessing 2000 Silverton 352 Electronics 5



12.6 The Blessing 2000 Silverton 352 Electronics 6



9 The Blessing 2000 Silverton 352 Wet Bar



28 The Blessing 2000 Silvertown 352 Forward Stateroom



27 The Blessing 2000 Silvertown 352 Forward Cabin



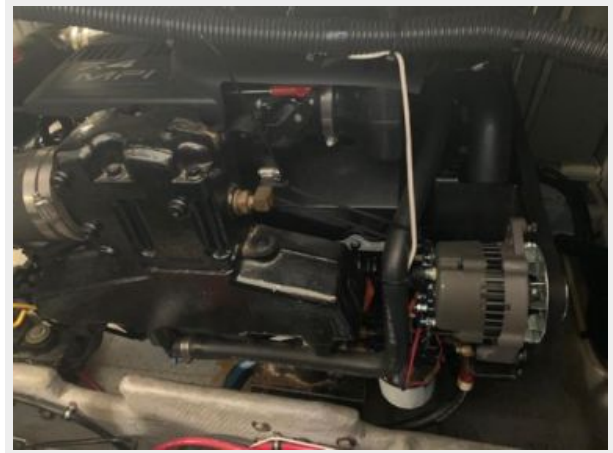
29 The Blessing 2000 Silvertown 352 Forward head **30 The Blessing 2000 Silvertown 352 Forward Shower and Head**



33 The Blessing 2000 Silverton 352 Aft Cabin



39 The Blessing 2000 Silverton 352 Engine Room 5



16 The Blessing 2000 Silverton 352 Salon Overview



41 The Blessing 2000 Silverton 352 Engine Room 7



6 The Blessing 2000 Silverton 352 Aft Deck to Cabin Entry



41.2 The Blessing 2000 Silverton 352 Waterheater



42 The Blessing 2000 Silverton 352 Aft View with Dinghy 4.2 The Blessing 2000 Silverton 352 Anchor Chain Locker



18 The Blessing 2000 Silverton 352 Forward View from Salon



20 The Blessing 2000 Silverton 352 Port Side Salon



19 The Blessing 2000 Silverton 352 Galley 1



20.1 The Blessing 2000 Silverton 352 Starboard Salon View



23 The Blessing 2000 Silverton 352 Aft View of Salon



24 The Blessing 2000 Silverton 352 Companionway 2



25 The Blessing 2000 Silverton 352 Aft Salon



13 The Blessing 2000 Silverton 352 Helm Seating 1



10 The Blessing 2000 Silverton 352 Helm 3



13.1 The Blessing 2000 Silverton 352 Helm Seating



31 The Blessing 2000 Silverton 352 Aft Berth



32 The Blessing 2000 Silverton 352 Aft Berth 2



11 The Blessing 2000 Silverton 352 Helm 2



35 The Blessing 2000 Silverton 352 Engine Room 1



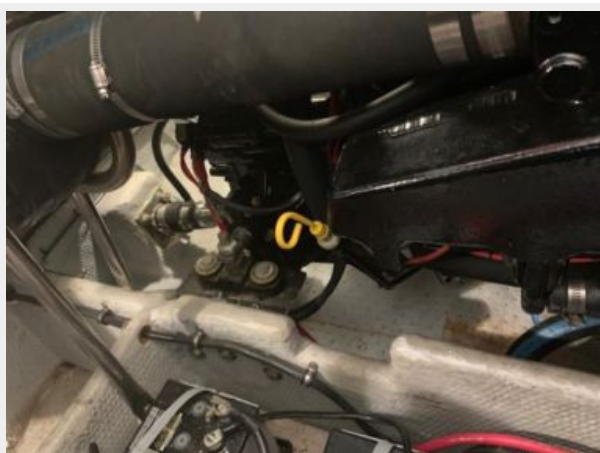
37 The Blessing 2000 Silverton 352 Engine Room 3



36 The Blessing 2000 Silverton 352 Engine Room 2



38 The Blessing 2000 Silverton 352 Engine Room 4



41.1 The Blessing 2000 Silverton 352 Generator



3 The Blessing 2000 Silverton 352 Starboard View



8 The Blessing 2000 Silverton 352 Bridge Access



5 The Blessing 2000 Silverton 352 Aft Cabin Exit door



21 The Blessing 2000 Silverton 352 Salon Seating



7 The Blessing 2000 Silverton 352 Aft Deck
1

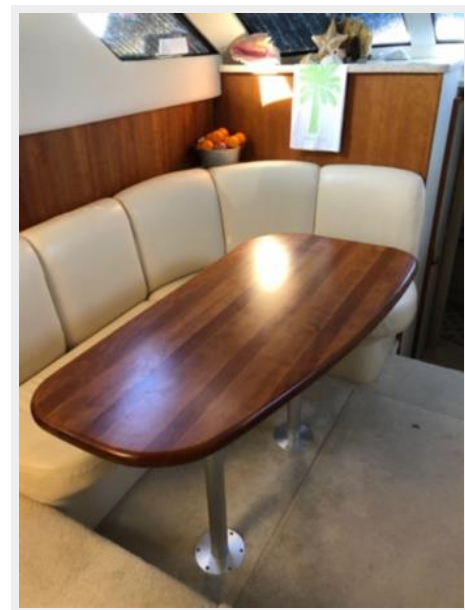


26 The Blessing 2000 Silverton 352
Companionway



22 The Blessing 2000 Silverton 352 Dinette

12 The Blessing 2000 Silverton 352 Helm 1



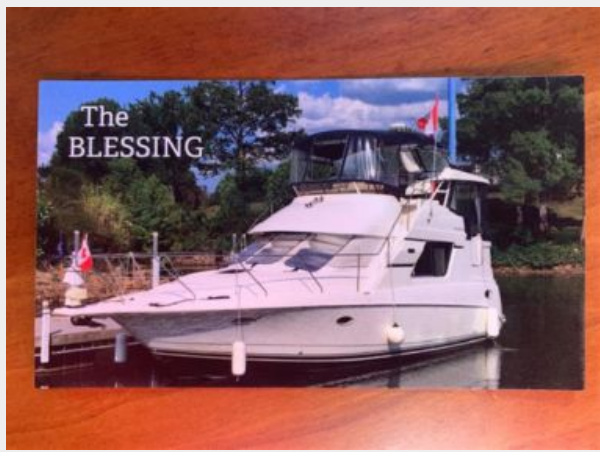
4.1 The Blessing 2000 Silverton 352 SideWalk



39.1 The Blessing 2000 Silverton 352 Drive shaft



43 The Blessing 2000 Silverton 352



44 2000 Silverton 352 Mfg image



CONTACTS

Andrey Shestakov, leading yacht broker of the sales department of Shestakov Yacht Sales Inc. Shestakov Yacht Sales Inc., the official representative of the Miami/Fort Lauderdale FL headquarters.

Contact details

Email: andrey@shestakovyachtsales.com

Web: shestakovyachtsales.com/en/

Telephones

USA: +1(954)274-4435

Office hours

Monday – Saturday: **9:00 - 21:00** EDT

Sunday: **closed**

Address



Harbour Towne Marina, 850 NE 3rd St,
STE 213, Dania, FL 33004