

## THE BLESSING — SILVERTON



**Судостроитель:** SILVERTON

**Год постройки:** 2000

**Модель:** Моторная яхта

**Цена:** **ЦЕНА ЯХТЫ ПО ЗАПРОСУ**

**Местонахождение:** United States

**Длина общая:** 35' 0" (10.67m)

**Ширина:** 13' 0" (3.96m)

**Макс. осадка:** 3' 3" (0.99m)

**Крейс. скорость:** 8 Kts. (9 MPH)

Купить **The Blessing — SILVERTON** а также выбрать подходящую вам яхту из нашего каталога яхт вам поможет опытный яхтенный брокер Андрей Шестаков. На сегодняшний день компания **Shestakov Yacht Sales Inc.** имеет большое количество яхт в собственном списке продаж, а также тесно сотрудничает со всеми крупными яхтенными производителями по всему миру.

Для того чтобы купить яхту **The Blessing — SILVERTON** а также проконсультироваться по любому вопросу связанному с покупкой, продажей, чартером яхт позвоните по телефону **+7(918)465-66-44**.

# ОГЛАВЛЕНИЕ

ОГЛАВЛЕНИЕ	2
ХАРАКТЕРИСТИКИ	5
Обзор	5
Основная информация	5
Размеры	5
Скорость, вместимость и масса	5
Размещение	6
Корпус и палуба	6
Информация о двигателе	6
ПОДРОБНОЕ ОПИСАНИЕ	7
MAIN DESCRIPTION	7
MANUFACTURER PROVIDED DESCRIPTION	7
UPDATES	7
OUTSIDE FEATURES	7
Electronics	8
DISCLAIMER	8
Исключения	8
Отказ от ответственности	8
ФОТОГРАФИИ	9
12.3 The Blessing 2000 Silverton 352 Electronics 3	9
12.4 The Blessing 2000 Silverton 352 Electronics 4	9
4.3 The Blessing 2000 Silverton 352 Windalss	9
2 The Blessing 2000 Silverton 352 at anchor	9
12.1 The Blessing 2000 Silverton 352 Electronics 1	10
1 The Blessing 2000 Silverton 352 at anchor 2	10
14 The Blessing 2000 Silverton 352 Flybridge Seating 1	10
34 The Blessing 2000 Silverton 352 Aft Shower and Sink	10
15 The Blessing 2000 Silverton 352 Flybridge Seating 2	11

---

4 The Blessing 2000 Silverton 352 Port View 1	11
40 The Blessing 2000 Silverton 352 Engine Room 6	11
17 The Blessing 2000 Silverton 352 Fwd Salon	11
12.2 The Blessing 2000 Silverton 352 Electronics 2	12
12.5 The Blessing 2000 Silverton 352 Electronics 5	12
9 The Blessing 2000 Silverton 352 Wet Bar	12
12.6 The Blessing 2000 Silverton 352 Electronics 6	12
28 The Blessing 2000 Silverton 352 Forward Stateroom	13
27 The Blessing 2000 Silverton 352 Forward Cabin	13
29 The Blessing 2000 Silverton 352 Forward head	13
30 The Blessing 2000 Silverton 352 Forward Shower and Head	13
33 The Blessing 2000 Silverton 352 Aft Cabin	14
39 The Blessing 2000 Silverton 352 Engine Room 5	14
16 The Blessing 2000 Silverton 352 Salon Overview	14
41 The Blessing 2000 Silverton 352 Engine Room 7	14
6 The Blessing 2000 Silverton 352 Aft Deck to Cabin Entry	15
41.2 The Blessing 2000 Silverton 352 Waterheater	15
42 The Blessing 2000 Silverton 352 Aft View with Dinghy	15
4.2 The Blessing 2000 Silverton 352 Anchor Chain Locker	15
18 The Blessing 2000 Silverton 352 Forward View from Salon	16
20 The Blessing 2000 Silverton 352 Port Side Salon	16
19 The Blessing 2000 Silverton 352 Galley 1	16
20.1 The Blessing 2000 Silverton 352 Starboard Salon View	16
23 The Blessing 2000 Silverton 352 Aft View of Salon	17
24 The Blessing 2000 Silverton 352 Companionway 2	17
13 The Blessing 2000 Silverton 352 Helm Seating 1	17
25 The Blessing 2000 Silverton 352 Aft Salon	17
13.1 The Blessing 2000 Silverton 352 Helm Seating	18
10 The Blessing 2000 Silverton 352 Helm 3	18

---

32 The Blessing 2000 Silverton 352 Aft Berth 2	18
31 The Blessing 2000 Silverton 352 Aft Berth	18
35 The Blessing 2000 Silverton 352 Engine Room 1	19
11 The Blessing 2000 Silverton 352 Helm 2	19
37 The Blessing 2000 Silverton 352 Engine Room 3	19
36 The Blessing 2000 Silverton 352 Engine Room 2	19
38 The Blessing 2000 Silverton 352 Engine Room 4	19
41.1 The Blessing 2000 Silverton 352 Generator	19
8 The Blessing 2000 Silverton 352 Bridge Access	20
3 The Blessing 2000 Silverton 352 Starboard View	20
5 The Blessing 2000 Silverton 352 Aft Cabin Exit door	20
21 The Blessing 2000 Silverton 352 Salon Seating	20
7 The Blessing 2000 Silverton 352 Aft Deck 1	21
26 The Blessing 2000 Silverton 352 Companionway	21
22 The Blessing 2000 Silverton 352 Dinette	21
12 The Blessing 2000 Silverton 352 Helm 1	21
4.1 The Blessing 2000 Silverton 352 SideWalk	22
39.1 The Blessing 2000 Silverton 352 Drive shaft	22
43 The Blessing 2000 Silverton 352	22
44 2000 Silverton 352 Mfg image	22
<b>КОНТАКТЫ</b>	<b>23</b>
Контактная информация	23
Телефоны	23
Время работы	23
Адрес	23

# ХАРАКТЕРИСТИКИ

## Обзор

A "Great Loop" veteran she is among the largest 35 motor yachts ever built, these boats are over 41' long, 13' wide and have more interior volume than most 40s. The interior floorplan offers a very roomy and comfortable salon, dinette and galley that blend together well. Lots of teak trim and ultraleather furniture. There are two staterooms with double berths as well as two full heads, both with showers, again rare in this size boat. As if two berths isn't enough the couch in the salon also makes into a double berth. The Blessing has to be among the nicest of these available. Delivered new to Nashville she was kept undercover in fresh water until she began her "loop" last fall. In the past year she has completed "the loop" and even made a trip to the Bahamas. Her fuel injected 330 hp Mercruiser inboards have only 1614 original hours and her 7.3 Kohler generator has 1294 hours. 1mpg @ 1500rpm A dinghy and Davit were added in the last 6 months and are not included but negotiable.

## Основная информация

**Тип судна:** Моторная яхта

**Модельный год:** 2000

**Год постройки:** 2000

**Страна:** United States

## Размеры

**Длина общая:** 35' 0" (10.67m)

**Ширина:** 13' 0" (3.96m)

**Макс. осадка:** 3' 3" (0.99m)

**Трапы:** 16' 2" (4.93m)

## Скорость, вместимость и масса

**Крейс. скорость:** 8 Kts. (9 MPH)

**Вместимость воды:** 100 Gallons

**Вместимость сточного бака:** 68 Gallons

**Объем топливного бака:** 286 Gallons

## Размещение

---

**Всего кают:** 2

**Всего коек:** 3

**Всего ком. состава:** 2

## Корпус и палуба

---

**Материал корпуса:** Fiberglass

## Информация о двигателе

---

**Двигатели:** 2

**Производитель:** Mercruiser

**Модель:** Crusader 7.4 L MPI

**Тип двигателя:** Inboard

**Тип топлива:** Gas/Petrol

---

# ПОДРОБНОЕ ОПИСАНИЕ

---

## MAIN DESCRIPTION

---

A "Great Loop" veteran she is among the largest 35 motor yachts ever built, these boats are over 41' long, 13' wide and have more interior volume than most 40s. The interior floorplan offers a very roomy and comfortable salon, dinette and galley that blend together well. Lots of teak trim and ultraleather furniture. There are two staterooms with double berths as well as two full heads, both with showers, again rare in this size boat. As if two berths isn't enough the couch in the salon also makes into a double berth. The Blessing has to be among the nicest of these available. Delivered new to Nashville she was kept undercover in fresh water until she began her "loop" last fall. In the past year she has completed "the loop" and even made a trip to the Bahamas. Her fuel injected 330 hp Mercruiser inboards have only 1614 original hours and her 7.3 Kohler generator has 1294 hours. 1mpg @ 1500rpm A dinghy and Davit were added in the last 6 months and are not included but negotiable.

## MANUFACTURER PROVIDED DESCRIPTION

---

The Silverton 352 Motor Yacht follows the tremendously successful big sister 392. Silverton took all the features that made the 392 a hit and scaled them back to the 352. Silverton's unique "SideWalk" steps allow freedom of movement from the bridge to foredeck. Cumbersome ladders have been replaced by wide molded steps and a high toe kick. Sturdy oversize stainless steel rails will keep passengers safe and secure even in a seaway. The center console flybridge will accommodate a crowd, while the standard aft hardtop makes entertaining and relaxing easy.

## UPDATES

---

Updates in 2017 include fresh bottom paint new props plus spares Update in 2018/2019 include, 5 new batteries new VHF/AIS receiver radio repacked rudder shafts replaced raw water pumps impellers and tune-ups new windlass motor 50' Chain w/ 400' rope rod renew macerator pump new thermostat and element on water heater new port side alternator new forward bilge pump all LED lighting updated GARMIN charts waterproofed Bimini All service is up to date, she is ready to go.

## OUTSIDE FEATURES

---

Outside features include Simpson Lawrence windlass with new motor Jabsco Spotlight Bimini top with full bridge and aft deck enclosure fiberglass hardtop radar mast molded fiberglass staircase from swim platform to the aft deck wet bar w/ icemaker.

---

## Electronics

---

Electronics include Garmin GPSMap 431 chartplotterRaytheon 210 VHF radioRaytheon Raydata depthfinder/ speedometerRitchie compassJVC stereoFlatpanel tvs with dvd players in the salon and both staterooms

---

## DISCLAIMER

---

The Company offers the details of this vessel in good faith but cannot guarantee or warrant the accuracy of this information nor warrant the condition of the vessel. A buyer should instruct his agents, or his surveyors, to investigate such details as the buyer desires validated. This vessel is offered subject to prior sale, price change, or withdrawal without notice.

---

## Исключения

---

При продаже яхты исключаются личные вещи владельца.

---

## Отказ от ответственности

---

Компания предоставляет описание судна или яхты добросовестно, но не может гарантировать точность этой информации, а также не ручается за техническое состояние. Покупатель должен проинструктировать своих агентов или оценщиков исследовать представленную информацию более подробно, по собственному желанию. Продажа судна или яхты, изменение цены или снятие с продажи будет происходить без предварительного уведомления.



# ФОТОГРАФИИ

12.3 The Blessing 2000 Silverton 352  
Electronics 3



12.4 The Blessing 2000 Silverton 352  
Electronics 4



4.3 The Blessing 2000 Silverton 352  
Windlass



2 The Blessing 2000 Silverton 352 at anchor



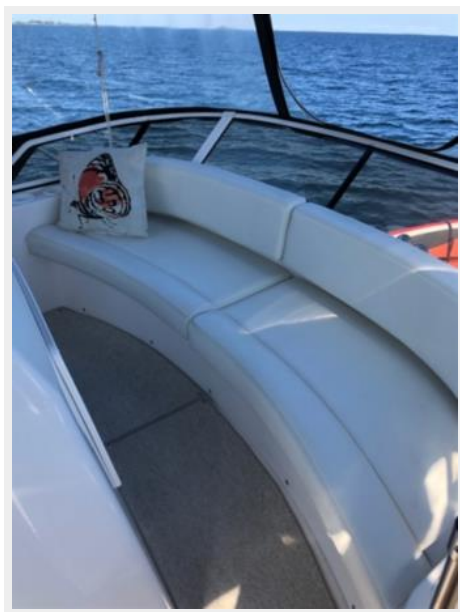
**12.1 The Blessing 2000 Silverton 352  
Electronics 1**



**1 The Blessing 2000 Silverton 352 at anchor  
2**



**14 The Blessing 2000 Silverton 352  
Flybridge Seating 1**



**34 The Blessing 2000 Silverton 352 Aft  
Shower and Sink**



**4 The Blessing 2000 Silverton 352 Port View**

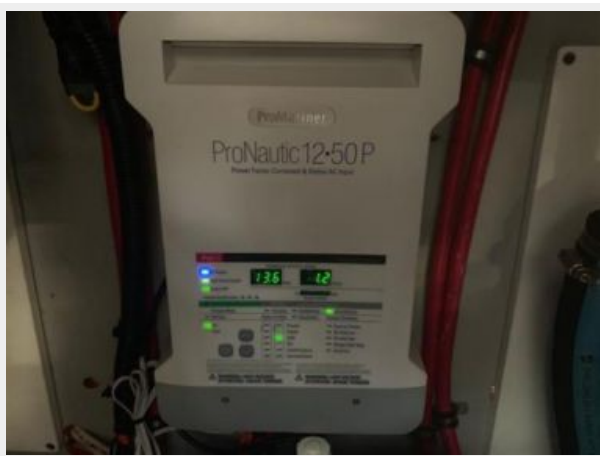
1



**15 The Blessing 2000 Silverton 352  
Flybridge Seating 2**



**40 The Blessing 2000 Silverton 352 Engine  
Room 6**



**17 The Blessing 2000 Silverton 352 Fwd  
Salon**



### 12.2 The Blessing 2000 Silverton 352 Electronics 2



### 12.5 The Blessing 2000 Silverton 352 Electronics 5



### 12.6 The Blessing 2000 Silverton 352 Electronics 6



### 9 The Blessing 2000 Silverton 352 Wet Bar



**28 The Blessing 2000 Silverton 352 Forward Stateroom**



**27 The Blessing 2000 Silverton 352 Forward Cabin**



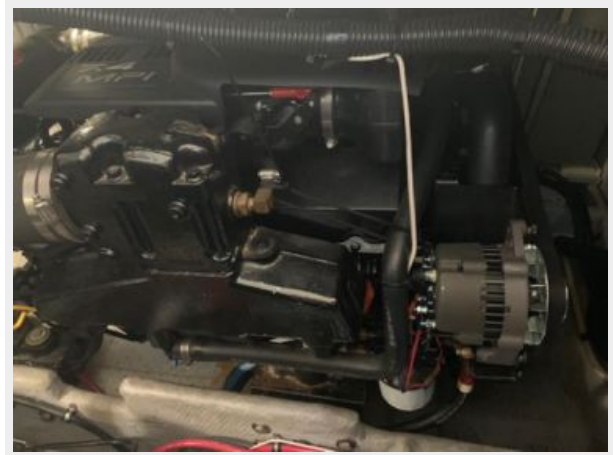
**29 The Blessing 2000 Silverton 352 Forward head**      **30 The Blessing 2000 Silverton 352 Forward Shower and Head**



### 33 The Blessing 2000 Silverton 352 Aft Cabin



### 39 The Blessing 2000 Silverton 352 Engine Room 5



### 16 The Blessing 2000 Silverton 352 Salon Overview



### 41 The Blessing 2000 Silverton 352 Engine Room 7



### 6 The Blessing 2000 Silverton 352 Aft Deck to Cabin Entry



### 41.2 The Blessing 2000 Silverton 352 Waterheater



### 42 The Blessing 2000 Silverton 352 Aft View with Dinghy 4.2 The Blessing 2000 Silverton 352 Anchor Chain Locker



**18 The Blessing 2000 Silverton 352 Forward View from Salon**



**20 The Blessing 2000 Silverton 352 Port Side Salon**



**19 The Blessing 2000 Silverton 352 Galley 1**



**20.1 The Blessing 2000 Silverton 352 Starboard Salon View**





**23 The Blessing 2000 Silverton 352 Aft View of Salon**



**24 The Blessing 2000 Silverton 352 Companionway 2**



**25 The Blessing 2000 Silverton 352 Aft Salon**



**13 The Blessing 2000 Silverton 352 Helm Seating 1**



10 The Blessing 2000 Silverton 352 Helm 3



13.1 The Blessing 2000 Silverton 352 Helm Seating



31 The Blessing 2000 Silverton 352 Aft Berth



32 The Blessing 2000 Silverton 352 Aft Berth 2



11 The Blessing 2000 Silverton 352 Helm 2



35 The Blessing 2000 Silverton 352 Engine Room 1



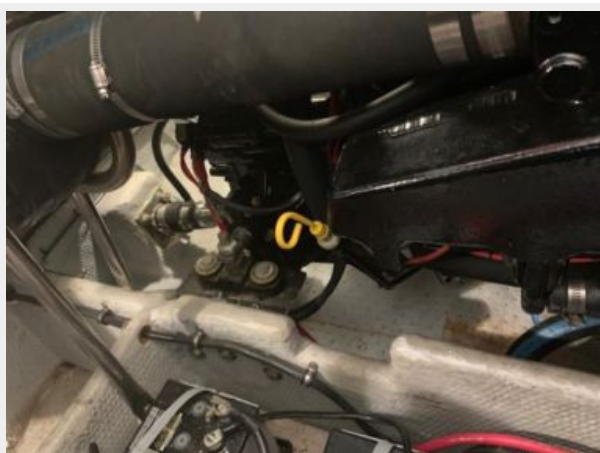
37 The Blessing 2000 Silverton 352 Engine Room 3



36 The Blessing 2000 Silverton 352 Engine Room 2



38 The Blessing 2000 Silverton 352 Engine Room 4



41.1 The Blessing 2000 Silverton 352 Generator



**3 The Blessing 2000 Silverton 352 Starboard View**



**8 The Blessing 2000 Silverton 352 Bridge Access**



**5 The Blessing 2000 Silverton 352 Aft Cabin Exit door**



**21 The Blessing 2000 Silverton 352 Salon Seating**



7 The Blessing 2000 Silverton 352 Aft Deck  
1

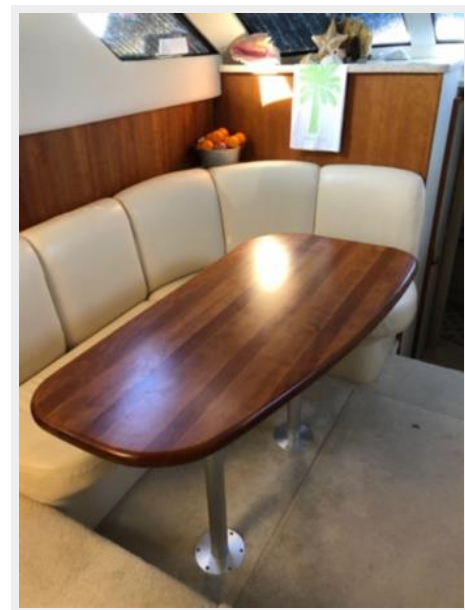


26 The Blessing 2000 Silverton 352  
Companionway



22 The Blessing 2000 Silverton 352 Dinette

12 The Blessing 2000 Silverton 352 Helm 1



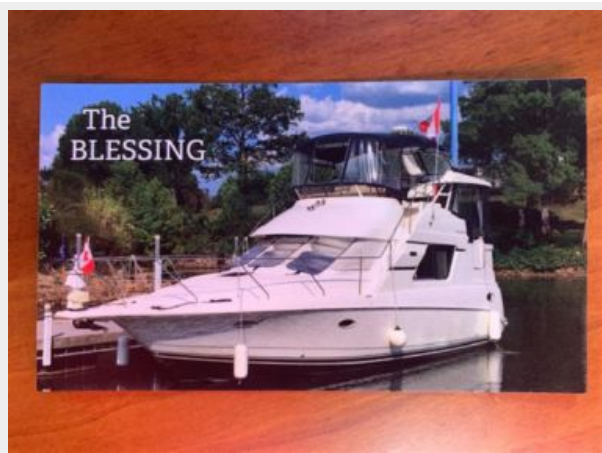
### 4.1 The Blessing 2000 Silverton 352 SideWalk



### 39.1 The Blessing 2000 Silverton 352 Drive shaft



### 43 The Blessing 2000 Silverton 352



### 44 2000 Silverton 352 Mfg image



# КОНТАКТЫ

---

Андрей Шестаков (Andrey Shestakov) – ведущий яхтенный брокер отдела продаж яхт и судов компании Shestakov Yacht Sales Inc. Официальный представитель Shestakov Yacht Sales Inc. для русскоговорящих клиентов в центральном офисе компании в Майами/Форт Лодердейл/Флорида/США.

## Контактная информация

---

Email: [andrey@shestakovyachtsales.com](mailto:andrey@shestakovyachtsales.com)

Web: [shestakovyachtsales.com](http://shestakovyachtsales.com)

## Телефоны

---

Краснодарский край: **+7(918)465-66-44**

США, Майами, Флорида: **+1(954)274-4435**

## Время работы

---

Понедельник – Суббота: **9:00 - 21:00**  
EDT

Воскресенье: **Закрито**

## Адрес

---



Harbour Towne Marina, 850 NE 3rd St,  
STE 213, Dania, FL 33004