

BELLA VITA — BROWARD



Builder: BROWARD

Year Built: 1984

Model: Motor Yacht

Price: PRICE ON APPLICATION

Location: United States

LOA: 91' 0" (27.74m)

Beam: 20' 6" (6.25m)

Max Draft: 5' 6" (1.68m)

Our experienced yacht broker, Andrey Shestakov, will help you choose and buy a yacht that best suits your needs **Bella Vita — BROWARD** from our catalogue. Presently, at Shestakov Yacht Sales Inc., we have a wide variety of yachts available on our sale's list. We also work in close contact with all the big yacht manufacturers from all over the world.

If you would like to buy a yacht **Bella Vita — BROWARD** or would like help answering any questions concerning purchasing, selling or chartering a yacht, please call **+1(954)274-4435**

TABLE OF CONTENTS

TABLE OF CONTENTS	2
SPECIFICATIONS	6
Overview	6
Basic Information	6
Dimensions	6
Speed, Capacities and Weight	7
Accommodations	7
Hull and Deck Information	7
Engine Information	7
DETAILED INFORMATION	8
ACCOMMODATIONS	8
Main Salon	8
Dining Room	8
Day Head	8
Galley	8
Owners Cabin	9
Companions Way	9
Guest Starboard Cabins	9
Guest Port Cabin	10
Crew Quarters	10
Aft Deck	10
Cockpit	10
Engine Room	10
Exclusions	10
Disclaimer	11
PHOTOS	12
IMG0516	12
IMG0231	12

IMGM0230	12
IMGM0474	12
IMGM0496	12
IMGM0476	12
IMGM0481	13
IMGM0479	13
IMGM0486	13
IMGM0488	13
IMGM0501	13
IMGM0499	13
IMGM0311	14
IMGM0505	14
IMGM0310	14
IMGM0502	14
IMGM0489	14
IMGM0491	14
IMGM0503	15
IMGM0500	15
IMGM0507	15
IMGM0490	15
IMGM0483	15
IMGM0245	15
IMGM0253	16
IMGM0264	16
IMGM0316	16
IMGM0326	16
IMGM0341	16
IMGM0356	16
IMGM0278	17

IMGM0291	17
IMGM0309	17
IMGM0307	17
IMGM0368	17
IMGM0398	17
IMGM0383	18
IMGM0402	18
IMGM0415	18
IMGM0466	18
IMGM0438	18
IMGM0450	18
IMGM0422	19
IMGM0332	19
IMGM0463	19
IMGM0461	19
IMGM0454	19
IMGM0471	19
IMGM0361	20
IMGM0457	20
IMGM0427	20
IMGM0363	20
IMGM0372	20
IMGM0374	20
IMGM0377	21
IMGM0373	21
IMGM0375	21
CONTACTS	22
Contact details	22
Telephones	22

Office hours 22

Address 22

SPECIFICATIONS

Overview

This 91' Broward is by far the best yacht available on the market on its class. Majority of the refit were done in 2018/2019.

- Refit in 2018/2019 including Full exterior Paint job.
- New Caterpillar 3412 installed in 2003/2004 with 400 original hours.
- New bottom replaced in 2010
- New exterior teak
- New interior wood flooring and New carpet on staterooms
- New Bar with Onyx countertop and commercial stainless steel sinks
- New furniture on salon
- New headliner
- New wall covers
- New Samsung TV's on all staterooms
- New pioneer system, New DVD, New BOSE audio speakers
- New dining table with new chairs accommodate 6 guest
- New tempurpedic mattress on master bed
- All new Air Conditioning system including all new chillers (3)
- Bottom paint done in November 2019
- New 100 Amps shore cord cable master
- New Bimini top

Basic Information

Category: Motor Yacht

Model Year: 1984

Year Built: 1984

Country: United States

Fly Bridge: Yes

Cockpit: Yes

Dimensions

LOA: 91' 0" (27.74m)

Beam: 20' 6" (6.25m)

Max Draft: 5' 6" (1.68m)

Speed, Capacities and Weight

Water Capacity: 1400 Gallons

Fuel Capacity: 6000 Gallons

Accommodations

Total Cabins: 3

Hull and Deck Information

Hull Material: Fiberglass

Engine Information

Engines: 2

Manufacturer: Caterpillar

Model: 3412E

DETAILED INFORMATION

ACCOMMODATIONS

- Number of cabin 3 plus 2 for crew
- Number of heads: 3 plus Day Head and 2 for the crew (6 in total)

Main Salon

The main salon is set up with a bar area aft salon on the starboard side. Forward is the stairs to starboard to go to staterooms. New TV Forward salon with new entertainment system. All new furniture

- New salon wood flooring
- New Bar with Onyx countertop and commercial stainless steel sinks
- New furniture
- New headliner
- New Samsung TV
- New pioneer system, New DVD, New BOSE audio speakers

Dining Room

Immediately forward of the pilot house, the dining room.

- New dining table with new chairs accommodate 6 guest
- New onyx counter top
- New Italian wall cover (Oikos)
- New headliner
- New LED lights
- New wood flooring

Day Head

Is located on the starboard side, just aft of the pilothouse, the Day Head was tastefully remodeled

Galley

All galley has been completed remodeled with all new appliance

- All cabinets New

- New floor
- New Samsung full side refrigerator with freezer
- Lot of storage
- New Samsung five (5) stove cooktop with oven integrated
- New Samsung microwave
- New Samsung dishwasher
- New commercial sink

Owners Cabin

The owner's cabin is a beautifully appointed full beam cabin on the lower deck.

- New carpet
- New tempurpedic mattress
- New Samsung TV, DVD
- New wall cover
- Sofa on port side of stateroom
- Extensive use of teak with built-ins flanking each side of the cabin.
- The port side incorporates a settee while the starboard side incorporates a vanity.
- Cedar lined closets are located on the aft wall with 1 safe box, with hers a walk in, and his has access to a large amount of under stair storage .
- Outboard of these are the entrances to his and hers completed remolded bathrooms. They both have NEW marble floors, new wallpaper, New faucets and rebuild heads. Both bathrooms connect via an extra-large central shower.

Companions Way

- Maytag Washer & Dryer
- New carpet
- Linen closet

Guest Starboard Cabins

Starboard guest cabins are a mirror of each other with twin beds running fore and aft and a nightstand/bookcase between them on the aft bulkhead. The beds have extensive storage underneath. There are built in drawers by the doors, under and between the beds of both cabins (15 in each) for guest convenience.

- New carpet
- New Samsung TV
- SMX II AC control
- Port hole

- Private head and shower (completed remolded)

Guest Port Cabin

- New carpet
- Double bed size
- New Samsung TV
- SMX II AC control
- Port hole
- Private head and shower (completed remolded)
- New headliner
- New wall cover
- Hanging closet

Crew Quarters

Located aft, there is accommodation for 4 crew in one double (port side) and a twin V berth .There is a sink, head and shower, and a crew mess starboard. Access to the engine room is forward through the crew mess.

Aft Deck

The aft deck was modified in 2001. Cap rails were removed and a large lounge was incorporated into the aft locker tops to accomplish this. A custom triple laminate teak and glass sliding door replaced the old Lexcan hinged door and the aft corners were modified to more comfortably. Lot of storage areas, transom door, rod holders, Jenn-Air Grill, sink

Cockpit

New teak deck with aft sofa seating area. Overhead speakers and lights.

Engine Room

- (2) NEW Caterpillar 3412 engines installed in 2002/2003.
- 50 hp hydraulic bow thrusters.
- Naiad stabilizers.

Exclusions

Owner's personal belongings.

Disclaimer

The Company offers the details of this vessel or yacht in good faith but cannot guarantee or warrant the accuracy of this information nor warrant the condition of the vessel. A buyer should instruct his representatives, agents, or his surveyors, to investigate such details as the buyer desires validated. This vessel or yacht is offered subject to prior sale, price change, or withdrawal without notice.

PHOTOS

IMG0516



IMG0231



IMG0230



IMG0474



IMG0496



IMG0476



IMG0481



IMG0479



IMG0486



IMG0488



IMG0501



IMG0499



IMG0311



IMG0505



IMG0310



IMG0502



IMG0489



IMG0491



IMG0503



IMG0500



IMG0507



IMG0490



IMG0483



IMG0245



IMG0253



IMG0264



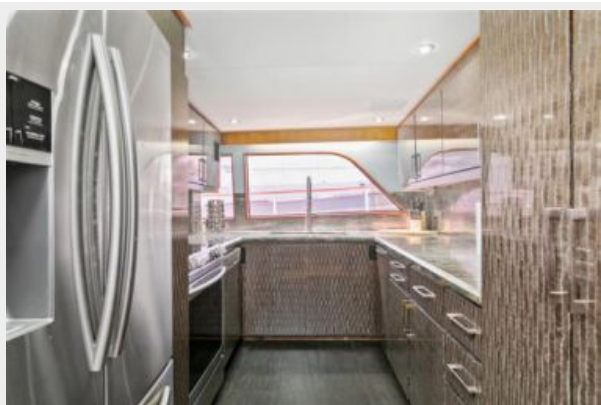
IMG0316



IMG0326



IMG0341



IMG0356



IMG0278



IMG0291



IMG0309



IMG0307



IMG0368



IMG0398



IMG0383



IMG0402



IMG0415



IMG0466



IMG0438



IMG0450



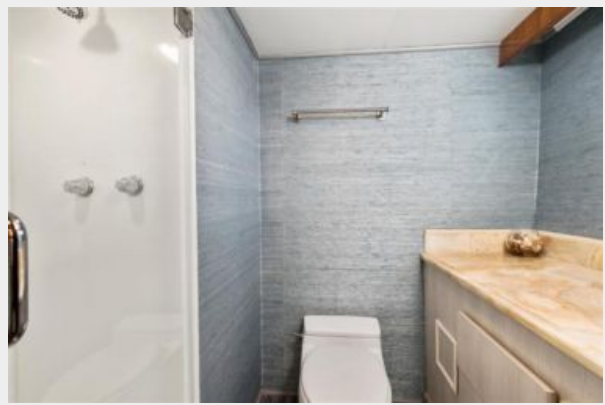
IMG0422



IMG0332



IMG0463



IMG0461



IMG0454



IMG0471



IMG0361



IMG0457



IMG0427



IMG0363



IMG0372



IMG0374



IMG0377



IMG0373



IMG0375



CONTACTS

Andrey Shestakov, leading yacht broker of the sales department of Shestakov Yacht Sales Inc. Shestakov Yacht Sales Inc., the official representative of the Miami/Fort Lauderdale FL headquarters.

Contact details

Email: andrey@shestakovyachtsales.com

Web: shestakovyachtsales.com/en/

Telephones

USA: +1(954)274-4435

Office hours

Monday – Saturday: **9:00 - 21:00** EDT

Sunday: **closed**

Address



Harbour Towne Marina, 850 NE 3rd St,
STE 213, Dania, FL 33004