

EMERALD — JAMES SILVER, SCOTLAND



Builder: JAMES SILVER, SCOTLAND

Year Built: 1957

Model: Motor Yacht

Price: PRICE ON APPLICATION

Location: Italy

LOA: 85' 4" (26mm)

Beam: 18.37

Min Draft: 7' 3" (2.2mm)

Cruise Speed: 9 Knots Kts. (10 MPH)

Max Speed: 12 Knots Kts. (14 MPH)

Our experienced yacht broker, Andrey Shestakov, will help you choose and buy a yacht that best suits your needs **Emerald — JAMES SILVER, SCOTLAND** from our catalogue. Presently, at Shestakov Yacht Sales Inc., we have a wide variety of yachts available on our sale's list. We also work in close contact with all the big yacht manufacturers from all over the world.

If you would like to buy a yacht **Emerald — JAMES SILVER, SCOTLAND** or would like help answering any questions concerning purchasing, selling or chartering a yacht, please call **+1(954)274-4435**

TABLE OF CONTENTS

TABLE OF CONTENTS	2
SPECIFICATIONS	3
Overview	3
Basic Information	3
Dimensions	3
Speed, Capacities and Weight	3
Accommodations	4
Hull and Deck Information	4
Engine Information	4
PHOTOS	5
CONTACTS	8
Contact details	8
Telephones	8
Office hours	8
Address	8

SPECIFICATIONS

Overview

In the comprehensive refit of EMERALD lead by the owner and the Mostes team, the traditional, authentic lines were preserved and combined with modern conveniences in a classic marine style. Her upper deck is ideal for entertaining, with ample comfy seating and a shaded charming al fresco dining area. EMERALD can accommodate up to eight guests in a master stateroom with double beds, two double bed and one twin guest staterooms, all en suite and air-conditioned. Her interior is classically-styled with neutrals and fine woods. Additionally EMERALD features a rigid composite hull dinghy with 60HP engine, wakeboard and snorkeling equipment as well as large and comfortable deck spaces for either relaxation or entertainment. Furthermore EMERALD is equipped with stabilizers at anchor and underway.

Basic Information

Category: Motor Yacht

Sub Category: Classic

Model Year: 1957

Year Built: 1957

Refit Type: Full restoration

Country: Italy

Dimensions

LOA: 85' 4" (26mm)

LWL: 75' 6" (23mm)

Beam: 18.37

Min Draft: 7' 3" (2.2mm)

Speed, Capacities and Weight

Cruise Speed: 9 Knots Kts. (10 MPH)

Cruise Speed Range: 1500

Max Speed: 12 Knots Kts. (14 MPH)

Gross Tonnage: 60 Pounds

Water Capacity: 3500 Gallons

Fuel Capacity: 1320.86 Gal Gallons

Fuel Consumption: 7.93 Gal Gallons

Accommodations

Total Cabins: 4

Total Berths: 8

Sleeps: 8

Total Heads: 5

Crew Cabin: 3

Crew Berths: 3

Crew Heads: 1

Hull and Deck Information

Hull Material: Teak

Deck Material: Teak

Hull Configuration: Full Displacement

Exterior Designer: John Bain

Interior Designer: John Bain

Engine Information

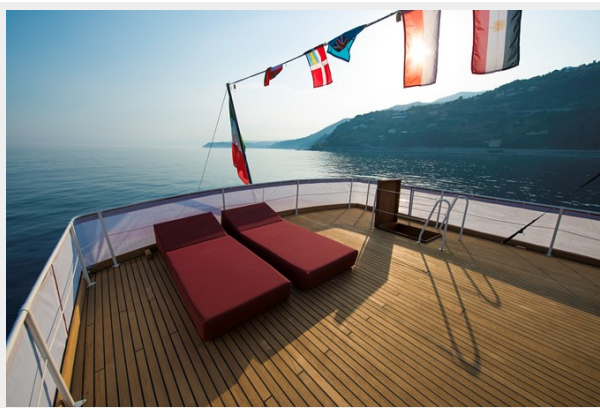
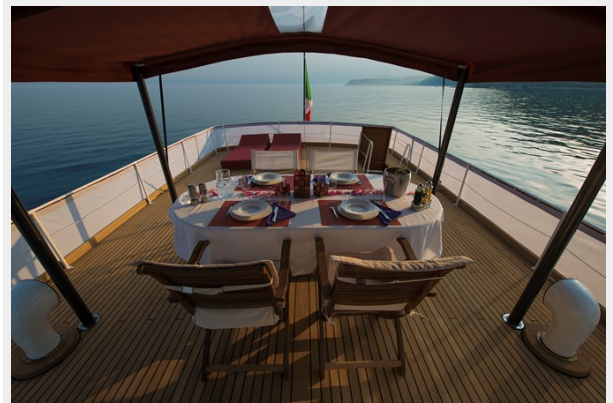
Engines: 2

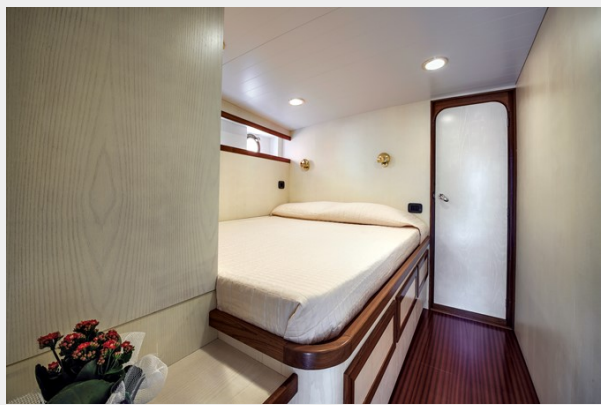
Manufacturer: Gardner

Engine Type: Inboard

Fuel Type: Diesel

PHOTOS







CONTACTS

Andrey Shestakov, leading yacht broker of the sales department of Shestakov Yacht Sales Inc. Shestakov Yacht Sales Inc., the official representative of the Miami/Fort Lauderdale FL headquarters.

Contact details

Email: andrey@shestakovyachtsales.com

Web: shestakovyachtsales.com/en/

Telephones

USA: +1(954)274-4435

Office hours

Monday – Saturday: **9:00 - 21:00** EDT

Sunday: **closed**

Address



Harbour Towne Marina, 850 NE 3rd St,
STE 213, Dania, FL 33004