

SWISH



Year Built: 1996

Model: Catamaran

Price: PRICE ON APPLICATION

LOA: 47' (14.33mm)

Beam: 27.83

Max Draft: 4' 6" (1.37mm)

Our experienced yacht broker, Andrey Shestakov, will help you choose and buy a yacht that best suits your needs **Swish** — n/a from our catalogue. Presently, at Shestakov Yacht Sales Inc., we have a wide variety of yachts available on our sale's list. We also work in close contact with all the big yacht manufacturers from all over the world.

If you would like to buy a yacht **Swish** — n/a or would like help answering any questions concerning purchasing, selling or chartering a yacht, please call **+1(954)274-4435**

TABLE OF CONTENTS

TABLE OF CONTENTS	2
SPECIFICATIONS	3
Overview	3
Basic Information	6
Dimensions	6
Speed, Capacities and Weight	6
Accommodations	6
Hull and Deck Information	6
PHOTOS	7
CONTACTS	10
Contact details	10
Telephones	10
Office hours	10
Address	10

SPECIFICATIONS

Overview

"Swish" is back on the market and better than ever! Owner has been actively sailing her in the Bahamas. She is ready to GO! One engine replaced in 2013, the other in 2018!

The Mayotte 47 is the predecessor to the Voyage 50, as Voyage Yachts bought Mayotte around 1996. So she's a strong South African built world cruising catamaran. The only difference between this boat and the Voyage 50 is that Voyage added the sugar scoop sterns. She is very well maintained and cared for and is ready for some lucky people to take her anywhere in the world. There are 4 queen cabins with heads and one single cabin in the starboard hull.

A large U shaped galley is adjacent to the large main salon. All Mayotte Cats are CE Certified and widely acknowledged for their quality, performance, ease of handling and low maintenance. She sails to weather very well. Her interior is comfortable and inviting with 6ft 6 inch headroom and lots of ventilation, and the saloon is spacious and offers great views of the surroundings. This yacht has 4 spacious cabins each with it's own bath, accommodating up to 8 passengers who can sail and play in comfort. The engines are not in living area but in dedicated separate engine rooms. Its extra wide beam offers outstanding stability, safety and exceptional space in the huge saloon, cockpit and decks. The beautiful gourmet upper level galley shares its large panoramic-view windows with the saloon and bar that form an exceptional airy and bright integrated entertainment area. This yacht has a huge amount of volume allowing for ample storage. The comfortable 4 cabin en-suite layout would be ideal for chartering or extended family cruising. The deck areas are wide, flat and safe with a large forward deck area. The cockpit is massive with plenty of seating and entertaining area. Boat can be beached or stand on keels without damaging rudders.

Swish is currently chartering with owner and mate in Georgetown Bahamas. She is in good condition with significant upgrades in 2018 including hauled and bottom painted October 2018.

Boat Name Swish Dimensions LOA: 49 ft 9 in Beam: 27 ft 10 in LWL: 44 ft 4 in Maximum Draft: 4 ft 6 in Displacement: 18000 lbs Bridge Clearance: 65 ft 7 in Headroom: 6 ft 4 in Engines Engine 1: Engine Brand: Yanmar Year Built: 2018 Engine Model: 3JH4E Engine Hours: 50 Drive Type: Sail drive Engine Power: 39 HP Engine 2: Engine Brand: Yanmar Year Built: 2013 Engine Model: 3JH4E Engine/Fuel Type: Diesel Engine Hours: 850 Drive Type: Sail drive Engine Power: 39 HP Tanks Fresh Water Tanks: (200 Gallons) Fuel Tanks: (100 Gallons) Accommodations Number of double berths: 4 Number of cabins: 4 Number of heads: 4

Inventory and Accommodations

Accommodations:

- Four queen staterooms with electric heads. Well ventilated, good storage

- 12/120v fans, reading and courtesy lights.
- One single cabin with lighting and fan.
- Large Main Salon and Galley up.
- LED lighting and fans.
- Wood cabin sole 2018
- Cockpit with large table
- cushioned seating and swivel helmsman chair
- Salon upholstery 2018
- Cockpit cushions 2018
- Two large deck lockers forward
- three swim platform lockers aft
- 4 electric heads

Construction:

- Construction
- GRP hull and deck with PVC foam in hulls, end grain Balsa in deck
- Forward stowage in hulls.
- engine room hatches aft deck.

Galley:

- 12v refrigerators (3)
- 12v freezer
- Galley freshwater filter
- Propane stove, 4 burner
- Propane oven 2018
- Pressurized water

Electronics:

- Raymarine chartplotter/radar
- Garmin chartplotters(2)
- Raymarine instruments 2018
- Raymarine autopilot 2018
- Lowrance VHF with AIS 2018
- Stereo with 4 speakers

Safety:

- 8 life preservers
- flares
- ring buoy
- 6 fire extinguishers
- EPIRB bought 2018

Electric:

- 1000 watts solar panels with regulator 2018
- Air Breeze wind generator
- 6 - 6 volt Trojan batteries 2018
- Honda generator 2018
- 100 amp battery charger
- 3000 watt inverter
- 110v shore power
- 4 12v bilge pumps
- 2 whale bilge pumps

Deck:

- 3 deck awnings
- 2 glass propane tanks and hose 2018
- 2 deck showers

Engines & Mechanical:

- 2 Yanmar 39hp diesels. 850/50 engine hours
- 2 Max props
- 2 Solid props
- 2 Yanmar saildrives, all seals and diaphragm replaced 2018
- 12v Spectra watermaker 2018
- 4 freshwater tanks, 50 gal. Each.
- 2 50 gal. diesel tanks and hoses 2018

Sails & Rigging:

- Harkin electric winch for Main sail and dinghy hoist 2018
- Mack sails: Main 2018
- Genoa 2018
- Main Sail cover 2018
- Running rigging 2018
- Partial Standing Rigging 2018
- Boom extension for dinghy

Dinghy:

- 11.5' Achilles Rib 2018
- 20hp Suzuki outboard 2018

Anchors:

- Maxwell electric windless 2018
- 70lbs Rocna anchor 2018

- 125' 3/8 G4 chain 2018
- Fortress anchor with rode

Basic Information

Category: Catamaran

Sub Category: Cruiser

Model Year: 1996

Year Built: 1996

Dimensions

LOA: 47' (14.33mm)

LWL: 44' 4" (13.51mm)

Beam: 27.83

Max Draft: 4' 6" (1.37mm)

Speed, Capacities and Weight

Water Capacity: 200 Gallons

Holding Tank: 100 Gal Gallons

Accommodations

Total Cabins: 4

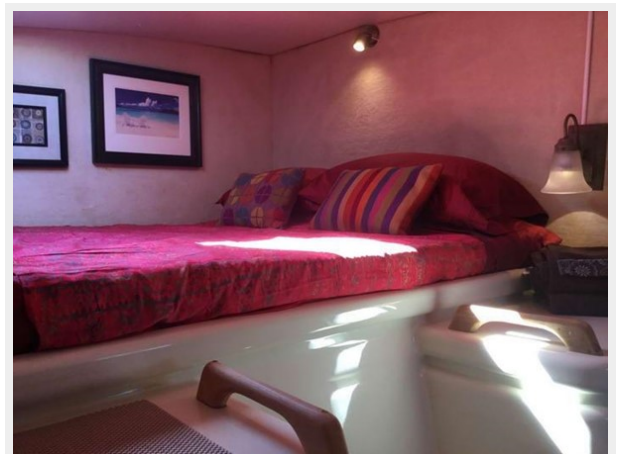
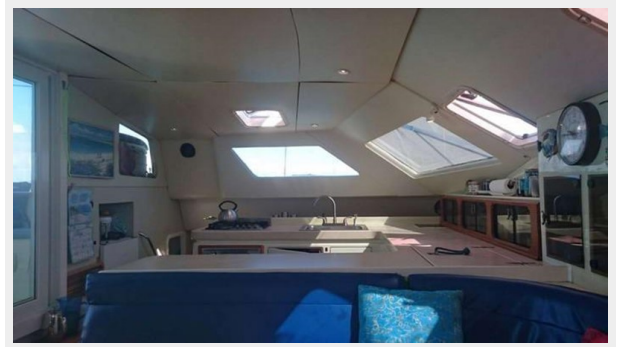
Total Heads: 4

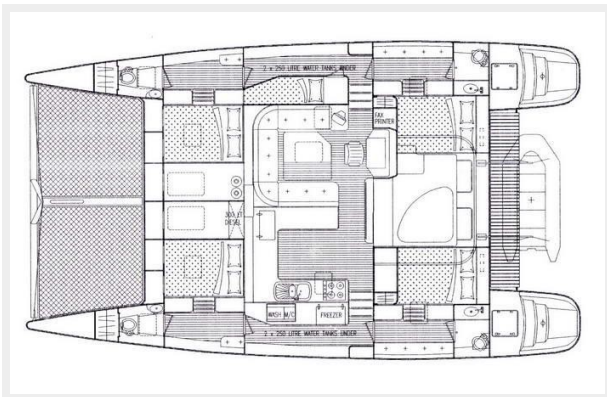
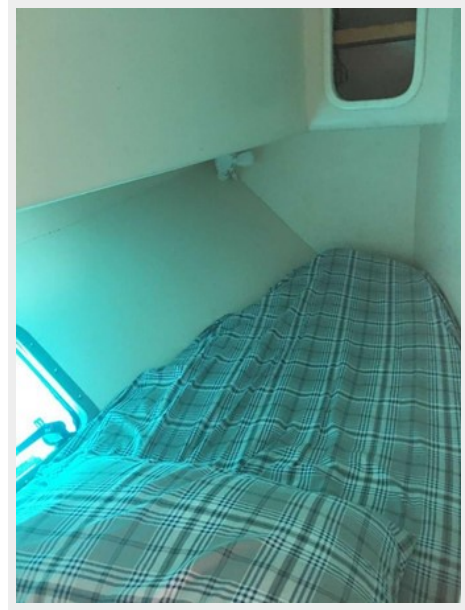
Hull and Deck Information

Hull Material: Fiberglass

PHOTOS







CONTACTS

Andrey Shestakov, leading yacht broker of the sales department of Shestakov Yacht Sales Inc. Shestakov Yacht Sales Inc., the official representative of the Miami/Fort Lauderdale FL headquarters.

Contact details

Email:
andrey@shestakovyachtsales.com

Web: shestakovyachtsales.com/en/

Telephones

USA: **+1(954)274-4435**

Office hours

Monday – Saturday: **9:00 - 21:00 EDT**

Sunday: **closed**

Address



Harbour Towne Marina, 850 NE 3rd St,
STE 213, Dania, FL 33004