

RAINBOW — PRINCESS YACHTS



Builder: PRINCESS YACHTS

Year Built: 2013

Model: Motor Yacht

Price: PRICE ON APPLICATION

Location: Turkey

LOA: 83' 8" (25.50m)

Beam: 18' 11" (5.75m)

Max Draft: 5' 11" (1.80m)

Cruise Speed: 25 Kts. (29 MPH)

Max Speed: 30 Kts. (35 MPH)

Our experienced yacht broker, Andrey Shestakov, will help you choose and buy a yacht that best suits your needs **RAINBOW — PRINCESS YACHTS** from our catalogue. Presently, at Shestakov Yacht Sales Inc., we have a wide variety of yachts available on our sale's list. We also work in close contact with all the big yacht manufacturers from all over the world.

If you would like to buy a yacht **RAINBOW — PRINCESS YACHTS** or would like help answering any questions concerning purchasing, selling or chartering a yacht, please call **+1(954)274-4435**

TABLE OF CONTENTS

TABLE OF CONTENTS	2
SPECIFICATIONS	3
Overview	3
Basic Information	3
Dimensions	4
Speed, Capacities and Weight	4
Accommodations	4
Hull and Deck Information	4
Engine Information	4
DETAILED INFORMATION	5
DETAILED DESCRIPTION	5
Exclusions	9
Disclaimer	9
PHOTOS	10
Rainbow-GA	16
CONTACTS	17
Contact details	17
Telephones	17
Office hours	17
Address	17

SPECIFICATIONS

Overview

The design of Princess 82 is elegant, stylish, and at the very forefront of yacht construction tech knowledge. The stern includes a very spacious area with a large table and ample seating - the perfect place for relaxing afternoons. Down on the bathing platform, there is access to the boat's 2 cabins crew area, which also leads through to the engine room. The teak deck runs all the way along the side decks up to the bow, which has large sun-pads with a sunshade canopy. Up on the fly bridge there are sunbathing areas and U-shaped dining area, which is serviced by a fully loaded wet-bar. The whole fly bridge is under the shade of a hydraulic Bimini top, which can be electrically opened at the touch of a button.

The interior of RAINBOW is vast. Entering the saloon, there is a very social seating area with a centered coffee table. The high/low electric flat screen TV is located on the starboard side for evening entertainment. Further forward is a stunning center piece formal dining table, which seats up to 8 people. Rounding up the main deck is the galley, which is centered between the dining area and the main helm, not forgetting an additional breakfast area or chart table for the skipper to use. The helm is equipped with an electric-driven partition for privacy. The master cabin is located in the lower deck mid-ships and is the full beam of the boat providing ample space including wardrobe and stunning en-suite bathroom with bidet. There are two further cabins which both have double beds, and another cabin with twin singles. All four cabins onboard the yacht have en-suite bathrooms with underfloor heating.

RAINBOW was built in Nov 2013 and was delivered to her owner in Sep 2014.

Basic Information

Category: Motor Yacht

Sub Category: Flybridge

Model Year: 2013

Year Built: 2013

Country: Turkey

Vessel Top: Bimini Top

Fly Bridge: Yes

Cockpit: Yes

Dimensions

LOA: 83' 8" (25.50m)

Beam: 18' 11" (5.75m)

Max Draft: 5' 11" (1.80m)

Speed, Capacities and Weight

Cruise Speed: 25 Kts. (29 MPH)

Max Speed: 30 Kts. (35 MPH)

Displacement: 121254.2441 Pounds

Water Capacity: 366.142464072 Gallons

Holding Tank: 132.086026 Gallons

Fuel Capacity: 1696.512917944 Gallons

Accommodations

Total Cabins: 4

Total Berths: 5

Sleeps: 8

Total Heads: 5

Crew Cabin: 2

Crew Berths: 4

Crew Sleeps: 4

Crew Heads: 1

Hull and Deck Information

Hull Material: GRP

Deck Material: Teak

Hull Configuration: Deep Vee

Hull Color: Blue

Engine Information

Engines: 2

Manufacturer: CAT

Model: C32A

Engine Type: Inboard

Fuel Type: Diesel

DETAILED INFORMATION

DETAILED DESCRIPTION

MACHINERY

Engines	2x CAT C32A (1,723hp each)
Engine hours	600 hrs / 599 hrs
Fuel Type	Diesel
Engine Type	Inboard
Propulsion Type	Twin Screw
Transmission	Shaft Drive
Stabilizers	Fin type TRAC Star 5 type stabilizing system
Bow & Stern thruster	Hydraulic 240kgf & 300kgf

ELECTRICAL EQUIPMENT

Generator	1x ONAN 27 kW/50 Hz
Generator hours	4,973 hrs
Inverter	
Shore power inlet	
Circuit	Continental 220v/240v sockets
Battery charger	

INSIDE EQUIPMENT

- Fresh water maker 160 liters/ hour
- Air conditioning
- Day head near the galley
- Bilge pump
- Electrically driven partition behind the wheelhouse
- Cockpit table

OUTSIDE EQUIPMENT/EXTRAS

- 4x Underwater transom lights (new, spring 2019)
- 1x 63kg Anchor
- Hydraulic windlasses
- Hydraulic coal grey bimini top with overhead led lighting and switched from fly bridge console.

- Sunshade canopy on the front deck
- Dinghy chocks on bathing platform
- Bar at the cockpit
- Movida Metallic Plata type external seats

NAVIGATION EQUIPMENT

- Navigation center (Plotter, Repeaters, GPS) Raymarine E125 multifunction
- Additional multifunctional display of Raymarine e125 type at the upper post
- Automatic identification system connected to a card plotter
- Third control station at cockpit (engines and thrusters)

COMMUNICATION EQUIPMENT

- VHF radio station with European frequency range
- Internal telephone communication

ACCOMMODATION

- Walnut flooring across the saloon, dining area, galley and wheelhouse.
- Leather cocoa brown arm-chairs at lower control station, mocha crème marble working surface of the galley
- Underfloor heating in Master Stateroom, Forward, Port & Starboard bathrooms

Staterooms

4

Configuration:	1x Master cabin full beam with bathroom and wardrobe 1x Double cabin on the bow 1x Double cabin on starboard side 1x Twin cabin with 2 single beds
Guests:	8
Total Heads:	5
Crew Cabins:	2
Crew:	4
Crew Heads:	1

MASTER CABIN

- Double bed
- 2x chairs for the coffee table and 1x chair for the in-built table
- Samsung TV set
- Harman Kardon DVD/CD player/receiver TV tuner
- Safe
- Wardrobe
- Ensuite bathroom with shower
- Bidet in the bathroom

BOW CABIN

- Double bed
- Samsung TV set
- Technomate tuner
- Fusion CD/Radio/MP3
- Wardrobe
- Ensuite bathroom with shower

PORT GUEST CABIN

- Two electrically driven shifted beds
- Wardrobe
- Ensuite bathroom with shower

STARBOARD GUEST CABIN

- Double bed
- Wardrobe

- Ensuite bathroom with shower

SALON

- Harman Kardon DVD/CD player & AV receiver
- Technomate TV Tuner
- Samsung TV set
- Dinner table for 8 persons and 8 chairs
- Round coffee table
- Ice generator
- Wine fridge

GALLEY

- Miele cooking panel
- Miele oven
- Miele fridge
- Miele dish washing machine
- “Nespresso” capsule coffee machine

AFT DECK

- Table
- Bar with washbasin

FOREDECK

- Sun awning on 4 pillars
- Fenders / mooring hooks kits

FLYBRIDGE

- Bar with a washbasin
- Grill
- Hydraulic Bimini top
- Fusion CD/Radio/MP3

CREW CABINS

- Enlarged second crew cabin with two beds and a conditioner
- Ensuite bathroom with shower
- Bosh washing and drying machine

SAFETY EQUIPMENT

- Full MCA coding safety equipment
- 2x Life rafts
- 8x life jackets

TENDER & WATER SPORTS

- Williams 445 type tender with 105hp Weber engine

Exclusions

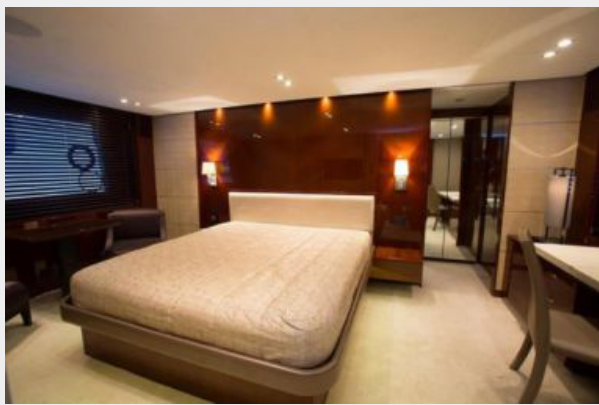
Owner's personal belongings.

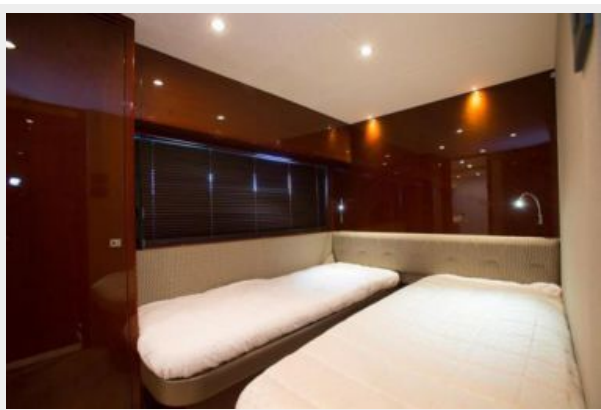
Disclaimer

The Company offers the details of this vessel or yacht in good faith but cannot guarantee or warrant the accuracy of this information nor warrant the condition of the vessel. A buyer should instruct his representatives, agents, or his surveyors, to investigate such details as the buyer desires validated. This vessel or yacht is offered subject to prior sale, price change, or withdrawal without notice.

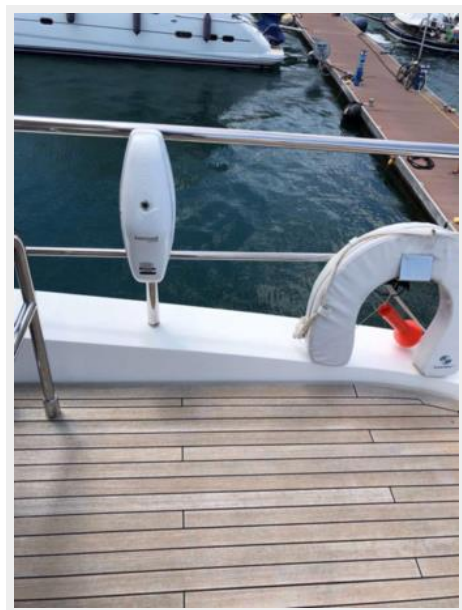
PHOTOS















Rainbow-GA



CONTACTS

Andrey Shestakov, leading yacht broker of the sales department of Shestakov Yacht Sales Inc. Shestakov Yacht Sales Inc., the official representative of the Miami/Fort Lauderdale FL headquarters.

Contact details

Email: andrey@shestakovyachtsales.com

Web: shestakovyachtsales.com/en/

Telephones

USA: +1(954)274-4435

Office hours

Monday – Saturday: **9:00 - 21:00** EDT

Sunday: **closed**

Address



Harbour Towne Marina, 850 NE 3rd St,
STE 213, Dania, FL 33004