

CHEROKEE — BURGER



Судостроитель: BURGER

Год постройки: 2000

Модель: Моторная яхта

Цена: **ЦЕНА ЯХТЫ ПО ЗАПРОСУ**

Местонахождение: United States

Длина общая: 84' 0" (25.60m)

Ширина: 21' 6" (6.55m)

Макс. осадка: 5' 7" (1.70m)

Крейс. скорость: 17 Kts. (20 MPH)

Макс. скорость: 21 Kts. (24 MPH)

Купить **CHEROKEE — BURGER** а также выбрать подходящую вам яхту из нашего каталога яхт вам поможет опытный яхтенный брокер Андрей Шестаков. На сегодняшний день компания **Shestakov Yacht Sales Inc.** имеет большое количество яхт в собственном списке продаж, а также тесно сотрудничает со всеми крупными яхтенными производителями по всему миру.

Для того чтобы купить яхту **CHEROKEE — BURGER** а также проконсультироваться по любому вопросу связанному с покупкой, продажей, чартером яхт позвоните по телефону **+7(918)465-66-44**.

ОГЛАВЛЕНИЕ

ОГЛАВЛЕНИЕ	2
ХАРАКТЕРИСТИКИ	4
Обзор	4
Основная информация	4
Размеры	4
Скорость, вместимость и масса	5
Размещение	5
Корпус и палуба	5
Информация о двигателе	5
ПОДРОБНОЕ ОПИСАНИЕ	6
Accommodations	6
Main Salon	6
Enclosed Aft Salon	6
Galley	7
Master Stateroom	7
VIP Bow Stateroom	8
VIP Queen Guest Stateroom, Starboard	8
Twin Guest Stateroom, Port	8
Pilothouse Equipment	8
Pilothouse Electronics & Navigation	9
Flybridge Electronics & Navigation	9
Flybridge Equipment	10
Aft Deck & Swim Platform	10
Deck Equipment	11
Electrical Equipment	11
Engine Room & Mechanical Equipment	11
Исключения	12
Отказ от ответственности	12

ФОТОГРАФИИ	13
Main Salon	13
Main Salon	13
Enclosed Aft Deck	14
Enclosed Aft Deck	14
Master Stateroom	14
VIP Stateroom, Forward	14
Guest Bath	15
Queen Guest Stateroom	15
Guest Bath	15
Twin Guest Stateroom	15
Pilothouse	15
Dinette	16
Galley	16
Flybridge	16
Bridge Helm	17
Flybridge Aft / Tender	17
Forward Deck / Bow	17
Aft Deck	18
Stern	18
Engine Room	18
488 General Arrangement 1_Page_1	19
488 General Arrangement 1_Page_2	19
КОНТАКТЫ	20
Контактная информация	20
Телефоны	20
Время работы	20
Адрес	20

ХАРАКТЕРИСТИКИ

Обзор

CHEROKEE is an excellent example of a quality Burger Flush Deck Motoryacht which features four beautiful staterooms, each with ensuite heads. The master stateroom is located midship and is accessible from main salon by a separate stairway aft to the starboard. Furnished with a centerline King sized berth and twin walk-in closets, along with His & Her heads with larger center shower enclosure. There are also two Queen guest staterooms and a third cabin with upper and lower berths, all with ensuite heads.

- Powered by twin Caterpillar 3412E main engines
- Accommodates (8) guests in (4) Staterooms w/ full beam King Master Suite
- Equipped with Naiad stabilizers, bow thruster & twin Generators
- Custom cherry wood interior
- Only two owners since new- Captain & Crew maintained!
- All maintenance records, ship logs and manuals neatly organized

Основная информация

Тип судна: Моторная яхта

Модельный год: 2000

Год постройки: 2000

Год обновления: 2014

Страна: United States

Верх: Open

Открытая палуба мостика: Да

Размеры

Длина общая: 84' 0" (25.60m)

Длина палубы: 84' 0" (25.60m)

Ширина: 21' 6" (6.55m)

Макс. осадка: 5' 7" (1.70m)

Длина привального бруса: 84' 0"
(25.60m)

Скорость, вместимость и масса

Крейс. скорость: 17 Kts. (20 MPH)

Макс. скорость: 21 Kts. (24 MPH)

Чистый вес: 129 Pounds

Вместимость воды: 790 Gallons

Объем топливного бака: 5500 Gallons

Размещение

Всего кают: 4

Всего коек: 8

Спальные места: 8

Всего ком. состава: 5

Корпус и палуба

Материал корпуса: Aluminum

Цвет корпуса: White

Информация о двигателе

Двигатели: 2

Производитель: Caterpillar

Модель: 3412 E

Тип двигателя: Inboard

Тип топлива: Diesel

ПОДРОБНОЕ ОПИСАНИЕ

Accommodations

CHEROKEE is an excellent example of a quality Burger motor yacht which features four beautiful staterooms each with ensuite heads. The master stateroom is located midship and is accessible from the main salon by a separate stairway aft to starboard. Furnished with a centerline king sized bed and twin cedar lined walk-in closets, the stateroom is full beam and very spacious.

Forward in the master stateroom are his and her heads separated by a large center shower enclosure. Three additional staterooms are located forward and accessible from the pilothouse down a staircase to starboard. Two are furnished with queen sized beds and a third cabin has upper and lower berths. Each has an ensuite, private head with separate shower. The head adjoining the upper berth stateroom also has a bath tub.

Main Salon

Aft from the galley & dinette is the main salon with large windows, port and starboard;

- Built-in L-shaped beige upholstered sectional to port with custom storage beneath
- Custom built cocktail table of beveled glass and stainless steel with burle legs
- Cherry wood entertainment center to starboard built-in beneath the window level
- Silhouette shades provide privacy and shade
- Stairway access to the master suite aft starboard side
- Glass and cherry paneled bulkhead separates main salon from aft salon

Entertainment Equipment:

- Samsung TV
- Sony BluRay DVD player
- Sony stereo receiver
- Sea Tel satellite TV antenna with TIVO feature
- (4) Overhead stereo speakers
- Korg 130 interactive music keyboard

Enclosed Aft Salon

A fully enclosed air conditioned, full-beam aft salon provides an ideal bonus area for relaxing and entertaining for family, friends and guests;

- L-shaped built-in seating along with (3) woven leather and rattan chairs
- Custom cherry table converts to dining expanding to seat 10-12 persons

- Built-in granite topped storage cabinets for dishes, flatware, glassware & sink
- Sub-Zero refrigerator and freezer undercounter
- Ladder from aft salon leads up to boat deck
- Lucite wing doors to port and starboard lead to side decks forward
- (2) Overhead stereo speakers

Galley

Forward of the main salon to port is the galley with L-shaped settee and granite top table for informal dining to starboard;

- Granite countertops and off-white cabinet facing
- L-shaped upholstered seating to starboard
- Granite top table with pedestal base
- Samsung SS French door refrigerator w/ freezer drawer below
- Samsung SS 4-burner plus warming burner electric range w/ convection oven
- Samsung SS convection/microwave oven
- Samsung SS automatic large capacity dishwasher
- GE built-in trash compactor
- Double SS sink
- Oversized cherry wood trimmed window
- Insinkerator garbage disposal
- Franke insta-hot faucet
- (2) Overhead stereo speakers
- Undercounter and overhead lighting provides a bright work area
- Amtico teak & holly flooring

Master Stateroom

The full beam master stateroom is accessed via an aft stairway from the main salon.

- King berth with drawer storage and center storage below
- Leather upholstered headboard
- (6) drawer dresser to port w/5' upholstered bench seat
- (12) drawer dresser to starboard
- (2) Drawer nightstands
- (2) Cedar lined walk-in closets
- (2) Reading lamps
- Wine Enthusiast wine cooler
- Bosch stackable washer and dryer in separate closet
- Samsung 32' LED TV - direct TV service

- (2) Overhead stereo speakers
- His & her baths with center shower w/ bench seat, vanities with sink, drawer storage, medicine cabinet and head

VIP Bow Stateroom

- Queen berth centerline w/drawer storage below
- Port and starboard closet and locker
- (2) Reading lights
- (2) Overhead speakers
- Ensuite head w/stall shower, Corian top vanity w/sink, mirrored medicine cabinet & head

VIP Queen Guest Stateroom, Starboard

- Queen berth w/drawer storage below
- Mirrored headboard and bulkhead
- Dresser w/ (3) drawers and (2) cabinets to starboard
- (2) Drawer nightstands
- Sony TV
- (2) overhead stereo speakers
- Cedar-lined closet
- Ensuite head w/stall shower, Corian top vanity w/sink, mirrored medicine cabinet & head

Forward Companionway:

- Whirlpool Thin Twin washer/dryer

Twin Guest Stateroom, Port

- Twin bunks w/drawer storage under lower bunk
- Cedar lined hanging locker
- (2) Reading lights
- (2) Overhead stereo speakers
- Entertainment center w/ Symphony 13' TV
- Ensuite head w/stall shower, Corian top vanity w/sink, mirrored medicine cabinet, head

Pilothouse Equipment

Forward on the main deck is the pilothouse with beautifully finished cherry wood joinery and Amtico teak and holly flooring;

- Day head/powder room located starboard in companionway next to the pilothouse and just forward of the galley
- Port and starboard sliding doors leading out to walk-around decks
- Wood and stainless steel ship's wheel
- (2) Overhead stereo speakers
- Stidd double helm bench seat provides for excellent visibility
- Built in U-shaped bench seat with large table and pedestal base
- Stairs leading up to the flybridge, starboard
- Built-in file drawers, locker and pull out pantry storage
- Forward to starboard is the stairway down to the guest staterooms

Pilothouse Electronics & Navigation

- Furuno FR2125BB radar with ARPA LCD851
- Garmin 8215 GPS/Chartplotter/Radar
- Anschutz Pilostar D Digital autopilot
- Furuno GPS/Chart plotter
- AIS receiver/ transmitter
- Inmarsat Sat Phone
- Datamarine Link 3500 depth finder
- Datamarine D3530 wind instrument
- Datamarine International depth sounder
- SEA VHF Radio
- Caterpillar engine vision monitors
- (2) Dell 19" LCD monitors
- Dell PC computer
- SEA loud hailer
- Kobelt main engine controls
- Naiad stabilizers main controls
- Bow thruster controls
- 4G/LTE dual Sim internet
- GP link ship monitoring integrated with Burger ship monitoring system
- Cat Electronic Tech-computer program to monitor engines
- Tank Sentry (digital) monitors fuel, black water, gray water & fresh water

Flybridge Electronics & Navigation

- Garmin 8215 GPS /Chart plotter /Radar
- Standard Horizon VHF radio
- Datamarine and Link depth sounder repeater displays
- Caterpillar engine vision monitors ('14)
- Anschutz autopilot control

- Garmin 740 GPS/Chart plotter (backup)
- Full controls for engines and bow thruster
- Naiad stabilizer monitor
- Searchlight joystick control
- Jastram rudder angle indicator
- Clarion M303 AM/FM Bluetooth stereo
- (4) JL Audio speakers
- Portable "wing station" controller w/35' cable, throttle, gear and thruster controls

Flybridge Equipment

The flybridge is accessed via pilothouse stairs or from aft salon ladder;

- Hinged radar arch with mast- hydraulic for lowering
- Built-in L-Shaped bench seating to port and starboard with dry storage below
- Cocktail table with pedestal base
- Built-in cabinet w/ Sub-Zero refrigerator/freezer, Kenyon electric grill, sink & storage
- Large storage area below the forward helm
- Murray helm chair centerline
- Helm bench seat to port with additional dry storage beneath
- Tinted plexiglass windscreen
- 15' 2011 Nautica tender w/90HP Yamaha O/B
- Nautical Structures EZ2000 davit
- Zodiac 8-person life raft
- ACR EPIRB
- Life ring
- Carlisle & Finch searchlight
- (3) Trumpet stainless steel Kahlenberg horn
- (2) Spare props 5-bladed
- (2) Spreader lights
- (4) JL audio speakers

Aft Deck & Swim Platform

Accessed from the aft salon through a 2-piece Dutch door to starboard, enabling easy docking. The aft deck has sufficient space for a small table and chairs;

- Freeman water tight engine room door from swim platform
- (2) Maxwell 3500 electric aft deck winches, port and stbd
- Stairway from starboard side down to integral swim platform
- Swim ladder
- Aft deck hot & cold shower

Deck Equipment

- Built-in bow seating with storage beneath
- Full width storage aft of bow seat, accessible from port or starboard doors
- Built-in port and starboard dunnage boxes
- Skylight deck hatch with access to the forward stateroom below
- Aluminum solid deck hatch with access to the watertight chain locker
- Hydraulic anchor windlass centered on the foredeck
- Bruce anchor with anchor chain
- Fortress back up anchor stowed in storage aft of bench seat
- High bulwarks with molded aluminum cap railings
- Courtesy deck lighting for night time illumination
- Freshwater wash down, storage for fenders and lines, shore power cables & reels
- Side mount boarding ladder
- Tide ride boarding ladder

Electrical Equipment

- KiloPak John Deere 38KW Generator - 8760 hrs
- Onan 23KW Generator - 4874 hrs
- 12V & 24V DC Systems
- 120V & 240V AC Systems
- AC & DC lighting throughout
- 12V & 24V Sentry automatic battery chargers
- 12V & 24V gel cell maintenance free battery banks ('19)
- (2) Glendenning 100 amp shore cable reels
- 100 amp Smart Y split to (2) 50 amps

Engine Room & Mechanical Equipment

Burger motor yachts are known for their quality engine rooms with high headroom and easy access to all machinery and equipment and CHEROKEE is a prime example of Burger's high quality. Accessed from watertight door on swim platform or from door in aft companionway of the master stateroom.

- Twin Caterpillar 3412 E Main Engines (Port: 8016 hrs / Stbd: 8027 hrs)
- Kobelt manual engine controls in engine room
- ZF #255 V-drive transmissions
- MarineAir Chilled Water reverse cycle, (3) 4-ton air conditioning units
- Naiad Marine model #302 Stabilizers
- Naiad 12SHT hydraulic bow thruster
- Sea Recovery 1500 GPD watermaker

- (2) Hartzell air intake fans, both reversible for air extraction
- Racor Fuel filters
- Alfa Laval fuel polishing system
- Fuel transfer system
- CO2 fire suppression system w/ (2) tanks w/ automatic air intake shut-off
- Grunfo 220V fresh water pump
- Flotech backup fresh water pump
- 12V DC Xcaliber by Headhunter back up fresh water pump
- 80 gallon water heater w/constant hot water circulation
- Sullair air compressor w/Slyvan compressor air tank
- Work bench w/ tool storage, wet sink and bench vice
- Air conditioned engine room
- Built-in oil changing system
- Engine room tool boxes

Исключения

При продаже яхты исключаются личные вещи владельца.

Отказ от ответственности

Компания предоставляет описание судна или яхты добросовестно, но не может гарантировать точность этой информации, а также не ручается за техническое состояние. Покупатель должен проинструктировать своих агентов или оценщиков исследовать представленную информацию более подробно, по собственному желанию. Продажа судна или яхты, изменение цены или снятие с продажи будет происходить без предварительного уведомления.

ФОТОГРАФИИ



Main Salon



Main Salon



Enclosed Aft Deck



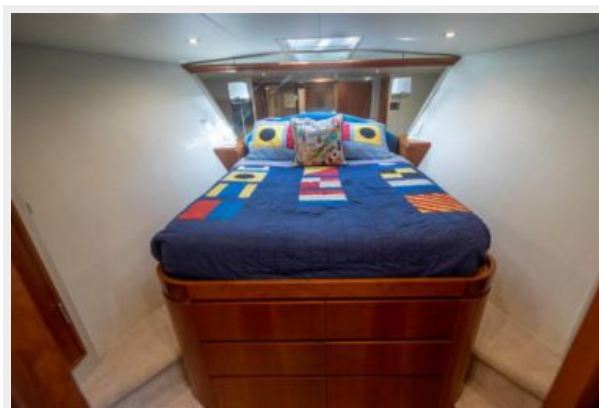
Enclosed Aft Deck



Master Stateroom



VIP Stateroom, Forward



Guest Bath



Queen Guest Stateroom



Guest Bath



Twin Guest Stateroom



Pilothouse



Dinette



Galley



Flybridge





Bridge Helm



Flybridge Aft / Tender



Forward Deck / Bow



Aft Deck



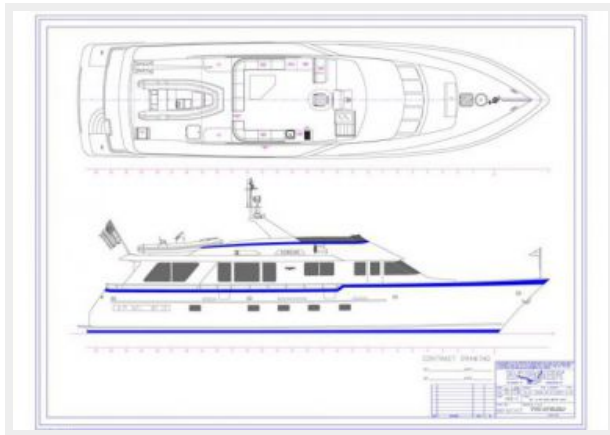
Stern



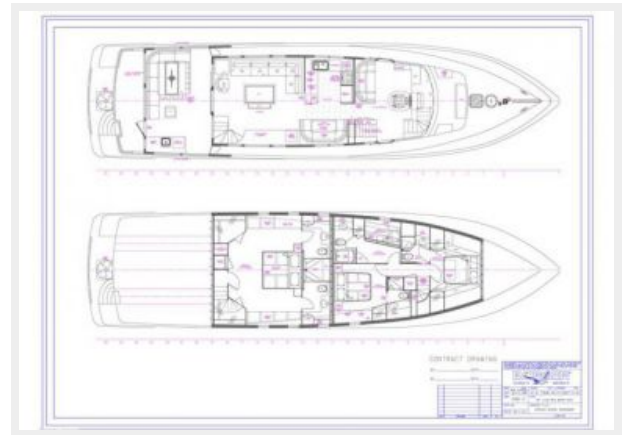
Engine Room



488 General Arrangement 1_Page_1



488 General Arrangement 1_Page_2



КОНТАКТЫ

Андрей Шестаков (Andrey Shestakov) – ведущий яхтенный брокер отдела продаж яхт и судов компании Shestakov Yacht Sales Inc. Официальный представитель Shestakov Yacht Sales Inc. для русскоговорящих клиентов в центральном офисе компании в Майами/Форт Лодердейл/Флорида/США.

Контактная информация

Email: andrey@shestakovyachtsales.com

Web: shestakovyachtsales.com

Телефоны

Краснодарский край: **+7(918)465-66-44**

США, Майами, Флорида: **+1(954)274-4435**

Время работы

Понедельник – Суббота: **9:00 - 21:00**
EDT

Воскресенье: **Закрито**

Адрес



Harbour Towne Marina, 850 NE 3rd St,
STE 213, Dania, FL 33004