

BECKONING — CATALINA



Судостроитель: CATALINA

Год постройки: 2001

Модель: Sloop

Цена: ЦЕНА ЯХТЫ ПО ЗАПРОСУ

Местонахождение: United States

Длина общая: 47' 0" (14.33m)

Ширина: 14' 0" (4.27m)

Макс. осадка: 5' 6" (1.68m)

Крейс. скорость: 7.5 Kts. (9 MPH)

Купить **Beckoning — CATALINA** а также выбрать подходящую вам яхту из нашего каталога яхт вам поможет опытный яхтенный брокер Андрей Шестаков. На сегодняшний день компания **Shestakov Yacht Sales Inc.** имеет большое количество яхт в собственном списке продаж, а также тесно сотрудничает со всеми крупными яхтенными производителями по всему миру.

Для того чтобы купить яхту **Beckoning — CATALINA** а также проконсультироваться по любому вопросу связанному с покупкой, продажей, чартером яхт позвоните по телефону **+7(918)465-66-44**.

ОГЛАВЛЕНИЕ

ОГЛАВЛЕНИЕ	2
ХАРАКТЕРИСТИКИ	8
Обзор	8
Основная информация	8
Размеры	8
Скорость, вместимость и масса	8
Размещение	9
Корпус и палуба	9
Информация о двигателе	9
ПОДРОБНОЕ ОПИСАНИЕ	10
MAIN DESCRIPTION	10
CATALINA 470 - BECKONING - MEDIA	10
CATALINA 470 - BECKONING - UPGRADES & REPLACEMENTS	10
CATALINA 470 - BECKONING - WALKTHROUGH	11
CATALINA 470 - BECKONING - ACCOMODATIONS	13
CATALINA 470 - BECKONING - MAIN CABIN	13
CATALINA 470 - BECKONING - AFT CABIN	14
CATALINA 470 - BECKONING - AFT HEAD	15
CATALINA 470 - BECKONING - FORWARD CABIN	15
CATALINA 470 - BECKONING - FORWARD HEAD	15
CATALINA 470 - BECKONING - COCKPIT	15
CATALINA 470 - BECKONING - HELM	16
CATALINA 470 - BECKONING - SWIM PLATFORM	16
CATALINA 270 - BECKONING - DECK & HULL	16
CATALINA 270 - BECKONING - RIG	17
CATALINA 270 - BECKONING - SAILS & CANVAS	17
CATALINA 270 - BECKONING - ELECTRONICS	17
CATALINA 470 - BECKONING - ELECTRICAL	17

CATALINA 470 - BECKONING - MECHANICAL	18
CATALINA 470 - BECKONING - SAFETY	18
CATALINA 470 - BECKONING - SPARES LOCKER	19
CATALINA 470 - BECKONING - TENDER	19
Исключения	19
Отказ от ответственности	19
ФОТОГРАФИИ	20
Catalina 470 - Beckoning - - 34	20
Catalina 470 - Beckoning - - 1	20
Catalina 470 - Beckoning - - 4	20
Catalina 470 - Beckoning - - 3	20
Catalina 470 - Beckoning - - 6	21
Catalina 470 - Beckoning - - 5	21
Catalina 470 - Beckoning - - 26	21
Catalina 470 - Beckoning - - 7	21
Catalina 470 - Beckoning - - 8	21
Catalina 470 - Beckoning - - 9	21
Catalina 470 - Beckoning - - 105	22
Catalina 470 - Beckoning - - 15	22
Catalina 470 - Beckoning - - 111	22
Catalina 470 - Beckoning - - 110	22
Catalina 470 - Beckoning - - 61	23
Catalina 470 - Beckoning - - 130	23
Catalina 470 - Beckoning - - 67	23
Catalina 470 - Beckoning - - 27	23
Catalina 470 - Beckoning - - 80	23
Catalina 470 - Beckoning - - 47	23
Catalina 470 - Beckoning - - 68	24
Catalina 470 - Beckoning - - 14	24

Catalina 470 - Beckoning - - 48	24
Catalina 470 - Beckoning - - 95	24
Catalina 470 - Beckoning - - 49	24
Catalina 470 - Beckoning - - 32	24
Catalina 470 - Beckoning - - 94	25
Catalina 470 - Beckoning - - 131	25
Catalina 470 - Beckoning - - 96	25
Catalina 470 - Beckoning - - 69	25
Catalina 470 - Beckoning - - 83	26
Catalina 470 - Beckoning - - 50	26
Catalina 470 - Beckoning - - 35	26
Catalina 470 - Beckoning - - 66	26
Catalina 470 - Beckoning - - 124	27
Catalina 470 - Beckoning - - 102	27
Catalina 470 - Beckoning - - 78	27
Catalina 470 - Beckoning - - 72	27
Catalina 470 - Beckoning - - 84	28
Catalina 470 - Beckoning - - 41	28
Catalina 470 - Beckoning - - 104	28
Catalina 470 - Beckoning - - 79	28
Catalina 470 - Beckoning - - 85	29
Catalina 470 - Beckoning - - 82	29
Catalina 470 - Beckoning - - 42	29
Catalina 470 - Beckoning - - 70	29
Catalina 470 - Beckoning - - 92	29
Catalina 470 - Beckoning - - 77	29
Catalina 470 - Beckoning - - 97	30
Catalina 470 - Beckoning - - 98	30
Catalina 470 - Beckoning - - 93	30

Catalina 470 - Beckoning - - 52	30
Catalina 470 - Beckoning - - 100	30
Catalina 470 - Beckoning - - 88	30
Catalina 470 - Beckoning - - 46	31
Catalina 470 - Beckoning - - 89	31
Catalina 470 - Beckoning - - 53	31
Catalina 470 - Beckoning - - 99	31
Catalina 470 - Beckoning - - 36	32
Catalina 470 - Beckoning - - 28	32
Catalina 470 - Beckoning - - 101	32
Catalina 470 - Beckoning - - 19	32
Catalina 470 - Beckoning - - 109	33
Catalina 470 - Beckoning - - 117	33
Catalina 470 - Beckoning - - 113	33
Catalina 470 - Beckoning - - 29	33
Catalina 470 - Beckoning - - 62	33
Catalina 470 - Beckoning - - 114	33
Catalina 470 - Beckoning - - 106	34
Catalina 470 - Beckoning - - 103	34
Catalina 470 - Beckoning - - 20	34
Catalina 470 - Beckoning - - 31	34
Catalina 470 - Beckoning - - 118	35
Catalina 470 - Beckoning - - 108	35
Catalina 470 - Beckoning - - 112	35
Catalina 470 - Beckoning - - 116	35
Catalina 470 - Beckoning - - 121	36
Catalina 470 - Beckoning - - 119	36
Catalina 470 - Beckoning - - 21	36
Catalina 470 - Beckoning - - 60	36

Catalina 470 - Beckoning - - 123	37
Catalina 470 - Beckoning - - 125	37
Catalina 470 - Beckoning - - 63	37
Catalina 470 - Beckoning - - 128	37
Catalina 470 - Beckoning - - 23	38
Catalina 470 - Beckoning - - 71	38
Catalina 470 - Beckoning - - 73	38
Catalina 470 - Beckoning - - 74	38
Catalina 470 - Beckoning - - 75	38
Catalina 470 - Beckoning - - 17	38
Catalina 470 - Beckoning - - 39	39
Catalina 470 - Beckoning - - 25	39
Catalina 470 - Beckoning - - 43	39
Catalina 470 - Beckoning - - 11	39
Catalina 470 - Beckoning - - 81	40
Catalina 470 - Beckoning - - 86	40
Catalina 470 - Beckoning - - 90	40
Catalina 470 - Beckoning - - 91	40
Catalina 470 - Beckoning - - 87	40
Catalina 470 - Beckoning - - 51	40
Catalina 470 - Beckoning - - 30	41
Catalina 470 - Beckoning - - 54	41
Catalina 470 - Beckoning - - 10	41
Catalina 470 - Beckoning - - 107	41
Catalina 470 - Beckoning - - 57	41
Catalina 470 - Beckoning - - 115	41
Catalina 470 - Beckoning - - 58	42
Catalina 470 - Beckoning - - 120	42
Catalina 470 - Beckoning - - 126	42

Catalina 470 - Beckoning - - 122	42
Catalina 470 - Beckoning - - 127	43
Catalina 470 - Beckoning - - 65	43
Catalina 470 - Beckoning - - 22	43
Catalina 470 - Beckoning - - 37	43
Catalina 470 - Beckoning - - 76	44
Catalina 470 - Beckoning - - 18	44
Catalina 470 - Beckoning - - 45	44
Catalina 470 - Beckoning - - 12	44
Catalina 470 - Beckoning - - 33	44
Catalina 470 - Beckoning - - 16	44
Catalina 470 - Beckoning - - 64	45
Catalina 470 - Beckoning - - 13	45
Catalina 470 - Beckoning - - 129	45
Catalina 470 - Beckoning - - 40	45
Catalina 470 - Beckoning - - 44	46
Catalina 470 - Beckoning - - 55	46
Catalina 470 - Beckoning - - 56	46
Catalina 470 - Beckoning - - 59	46
Catalina 470 - Beckoning - - 24	47
Catalina 470 - Beckoning - - 38	47
КОНТАКТЫ	48
Контактная информация	48
Телефоны	48
Время работы	48
Адрес	48

ХАРАКТЕРИСТИКИ

Обзор

Fitted out as a passagemaker Beckoning is not your average Catalina. This two owner boat has been extensively upgraded. She is turn key, ready for blue water and can take you wherever you want to go in comfort and safety. Her impressive equipment list includes AIS, EPIRB, Radar, Sonar, WiFi, Water Maker, GenSet, Wind Generator, Jacklines, Life Raft, an extensive Spares Locker, plus SSB and Satellite Communications. First launched as Catalina's flag ship model in 1998, the 470 features an upgraded fit and finish and was designed and built to achieve a CE Ocean Sailing Rating. Redundant systems include independent dual helm stations, multiple fuel & water tanks and independently operating fresh water heads. She features, roller furling sails with all controls leading aft so there is no need to leave the cockpit; which is huge and includes a hard top dodger and a full canvas enclosure. Below decks you'll find the space and functionality that is legendary at Catalina, complimented by upgraded joinery, appointments and LED lighting throughout. Well maintained and in terrific shape she is ready to set sail. If you are looking for a blue water cruiser don't miss out on Beckoning. Call for an appointment today!

Основная информация

Тип судна: Sloop

Модельный год: 2001

Год постройки: 2001

Страна: United States

Размеры

Длина общая: 47' 0" (14.33m)

Длина по ватерлинии: 42' 0" (12.80m)

Ширина: 14' 0" (4.27m)

Макс. осадка: 5' 6" (1.68m)

Трапы: 63' 4" (19.30m)

Скорость, вместимость и масса

Крейс. скорость: 7.5 Kts. (9 MPH)

Вместимость воды: 180 Gallons

Вместимость сточного бака: 70 Gallons

Объем топливного бака: 84 Gallons

Размещение

Всего кают: 2

Всего ком. состава: 2

Корпус и палуба

Материал корпуса: Fiberglass

Информация о двигателе

Двигатели: 1

Производитель: Yanmar

Модель: 4JH3-TE

Тип двигателя: Inboard

Тип топлива: Diesel

ПОДРОБНОЕ ОПИСАНИЕ

MAIN DESCRIPTION

Fitted out as a passagemaker Beckoning is not your average Catalina. This two owner boat has been extensively upgraded. She is turn key, ready for blue water and can take you wherever you want to go in comfort and safety. Her impressive equipment list includes AIS, EPIRB, Radar, Sonar, WiFi, Water Maker, GenSet, Wind Generator, Jacklines, Life Raft, an extensive Spares Locker, plus SSB and Satellite Communications. First launched as Catalina's flag ship model in 1998, the 470 features an upgraded fit and finish and was designed and built to achieve a CE Ocean Sailing Rating. Redundant systems include independent dual helm stations, multiple fuel & water tanks and independently operating fresh water heads. She features, roller furling sails with all controls leading aft so there is no need to leave the cockpit; which is huge and includes a hard top dodger and a full canvas enclosure. Below decks you'll find the space and functionality that is legendary at Catalina, complimented by upgraded joinery, appointments and LED lighting throughout. Well maintained and in terrific shape she is ready to set sail. If you are looking for a blue water cruiser don't miss out on Beckoning. Call for an appointment today!

CATALINA 470 - BECKONING - MEDIA

MEDIA: To view media files on Beckoning type or cut and paste these links (case sensitive) into your web browser: Walkthrough Video: 360 Degree Photos: Photo Slide Show:
Manufacturers Brochure: Cruising World Video: Cruising World Review: Ausail
Marine Review: Sailing Magazine Review:

CATALINA 470 - BECKONING - UPGRADES & REPLACEMENTS

- 135% Furling Genoa w/Padded Luff - 2012- Double Life Lines - 2012- Hard Top Dodger - 2014- Bimini, Hard Dodger, Connector and Full Cockpit Enclosure (including UV screens) - 2014- Raritan Marine Elegance Electric Heads (2); Fresh Water Flush - 2014- Seaward hot water heater 11 gal - 2014- Mercury Dinghy - 2015- Seachoice house water pump - 2016- Fasco A/C water pump - 2016- Par-Max seawater wash down pump - 2016- Simrad Forward Facing Sonar w/multi-function display - 2016- Mercury RIB Dinghy - 2015- Mack Furling Mainsail - 2017- Offshore Life Ring - 2017- Samsung 32": HD Flat Screen TV w/DVD Player - 2017- Generator fuel pump - 2017- AGM Lifeline bow thruster battery - 2017- AGM Lifeline house battery - 2017- AGM Lifeline auxiliary engine starter battery - 2018- West Marine genset starter battery - 2018- Gray water system - 2018- Cockpit speakers - 2018- Raymarine Radar (4km) w/Questus Stabilized Mount- Firdell Radar Reflector- ICOM M802 HF/SSB Radio W/Pactor modem (email ready)- Beam-Inmarsat Satalite Phone- Mobeltec AIS System, model SLR-200- ACR Electronics Global Fix EPIRB- WiFi System- Toshiba HD Flat screen TV- Bose speakers- Mast Head Camera, cockpit MFD display- Pur 160 Watermaker (requires service, kit aboard)- Wind Generator- Drogue- Offshore Life Jackets- Jacklines & Harnesses- 2 Man overboard rescue

systems- Winslow six persons life raft- Emergency evacuation kits- Spare part locker- Underwater transom lights- Dinghy davits with reinforced stern rail bracing

CATALINA 470 - BECKONING - WALKTHROUGH

COCKPIT:The large cockpit features independent, dual helm stations at the stern, port and starboard. Each featuring a stainless steel destroyer wheel, magnetic compass, autopilot controls, seat and cup holders. The starboard station also includes throttle/gear and bow thruster controls, a VHF hand held repeater and a rigging knife. A manual bilge pump is mounted at the port helm station. Two stern rail seats are found above the helm seats. An instrument pod is center mounted between the helm stations and includes a multi-function display, sonar and the engine control panels. Moving forward of the helm stations the cockpit features U shaped seating for a total 12. A dual leaf folding table w/cup holders and storage is center mounted and includes foot brace. Two cockpit speakers are mounted port and starboard beneath the bench seats. Storage is provided by two lockers under the bench seating and two large lazarette lockers under the helms seats. Two Harken 66 2-Speed self-tailing winches are mounted port and starboard for jib trim. To manage the halyards and main a Harken 44 2-Speed self-tailing winch mounted on the port cabin top and a Harken 44 2-Speed electric self-tailing winch is mounted on the starboard cabin top. All running rigging lines lead aft to the cockpit and are accessible to the electric winch. There are four opening hatches, two under the side benches and 2 on the coaming just forward of the helm stations. The cockpit is protected from the sun and sea by a hard top dodger and Bimini top with full enclosure panels and sunscreens.

SWIM PLATFORM:A full beam swim platform is molded into the stern of the vessel, with walkthrough access between the port and starboard helm seats. The platform features a hand held shower and a folding swim ladder that integrates into the stern rail. A two tank propane locker and shore power recepticals are found on the starboard side. Dingy davits are mounted above the platform, holding a 4 person Mercury dinghy with a Nissan 9.8 outboard.

TOPSIDES:Moving forward the deck is protected by stainless steel bow and stern railings connected by dual lifelines running the length of the deck port and starboard; gates are found at the cockpit and at the stern. Two man overboard recovery systems and a throw ring are mounted on the stern rail. A wind generator tower with EPIRB mount and hailing horn is mounted at the stern on the starboard side. Six hatches are found on the cabin top, along with two solar fan/vents and two stainless steel hand rails running along the port and starboard sides. 10 opening portlights and 4 fixed windows are found along the cabin sides. Raised jib tracks run along on the port and starboard side decks, with cleats found at the bow, stern and mid-ship. A Dual anchor stainless steel mount w/rollers is found at the bow along with a large split anchor locker to accommodate two anchors and rode. The locker also includes a salt and fresh water washdown spigots, a cleat, line hooks and an electric windless with vertical capstan and chain gypsy. The double spreader, masthead rig features a Schaefer headsail roller furler, in mast mainsail roller furling, cabin top mounted traveler, boom vang and boom break, whisker pole w/jibe preventer. The standing rigging is stainless wire cable.

MAIN CABIN:Entering the main cabin from the cockpit via a center mounted companionway, the galley is to port with the nav station to starboard. Going forward a large salon opens up with seating for nine. The main cabin, as well as the rest of the interior, is appointed

with satin finished teak joinery and a teak and holly sole. SALON:With a large seating area and 7' headroom the salon is bright and spacious. Along the starboard side there are two seats with a fold down table between that converts to a single berth. Storage lockers, shelving and a hand hold are found along the hull with a flat screen TV center mounted above the table. Opposite on the starboard side is a large U shaped settee, with a foldable teak table. A larger, pedestal mounted table is stored in the forward cabin, which can be lowered create a double berth. Shelves and storage lockers are found along the hull. Two stereo speakers are mounted port and starboard, aft. There are seven overhead LED lights and two LED sconce lamps mounted on the forward bulkhead, port and starboard. Ventilation and light are provided by two overhead opening hatches, four side mounted opening portlight and two fixed portlights all with shades. A fan is mounted on the forward port bulkhead, with an A/C vent found on the port side, aft. There are two 110 vac outlets. GALLEY:The 360 galley is located in the aft port section of the main cabin. A large 180 wrap around countertop is found in the aft section and includes a front and top access the Adler Barber refrigerator and a top access freezer. Under the counter there is a locker on the left side, refrigerator access center, and 4 drawers on the right. Over counter lockers run along the aft bulkhead, with a microwave and A/C vent mounted above the counter along the port hull. Moving forward along the hull side a three burner stove/oven is gimbal mounted, with a shelf and fixed portlight above, followed by a stainless ventilation hood. A hand hold runs the lengths of the galley along the hull side. Another counter is found forward of the stove, extending to the centerline and features a top access locker, double stainless steel sink, top and side access trash bin and an under sink locker. Additional lockers are mounted above the sink and along the hull above the counter. There is one 120 vac outlet, three overhead LED lights, with an additional light above the stove in the hood. Ventilation is provided by an A/C vent, an opening overhead hatch, an overhead solar fan, and the ventilation hood. NAV STATION:The forward facing nav station houses the navigation, communication and WiFi equipment as well as all electrical system controls. The station includes a 2 lockers, two drawers, under table compartment with additional storage under the seat. There is one overhead LED light and a chart light. Ventilation is provided by an opening overhead hatch and an overhead mounted fan. FORWARD STATEROOM:Moving forward from the salon, the private forward stateroom features a Pullman berth on the port side, with lockers and top shelf running along the starboard side. An additional storage locker is found under the berth and multiple clothing hooks throughout the cabin. There is one 120 vac outlet, 3 overhead LED lights and two LED reading lights, bulkhead mounted above the berth. Ventilation is provide by an A/C vent, an overhead opening hatch, four opening portlights and a forward bulkhead mounted fan.FORWARD CABIN ENSUITE HEAD:Found in the bow, the forward ensuite head features a separate shower, a Jabsco electric freshwater marine toilet and a sink with hot and cold running water. Entering the head, the sink is found to starboard, with a mirrored medicine cabinet above and a storage locker below, with the toilet paper holder integrated into the door. A 120 vac outlet is found to the right of the sink on the aft bulkhead, along with a toothbrush holder. Towel hooks are mounted to the left on the forward bulkhead. The shower is found all the way forward behind a glass door and includes a shower wand, shelving, a soap dispenser, towel hooks and two overhead LED lights. The marine toilet is to port, with a shelf and a mirrored locker behind and above. A towel rack and hook are mounted on either side of the head on the fore and aft bulkheads. There are two overhead lights and opening overhead hatch.AFT STATEROOM:The full beam aft stateroom is entered though a

starboard side companionway opposite the galley and features a center mounted queen berth, vanity and private access to the aft head. Chested drawers and lockers run from either side of the berth down the length of the cabin with shelving on top. A vanity with mirror, light and a drawer is found on the forward bulkhead. A flat screen TV is mounted to the port of the vanity, with storage racks above. There are two 120 vac outlets and a 12 vdc plug. Lighting is provided by two overhead lights and two dimmable LED sconce lamps on either side of the berth. Ventilation is provided by an A/C vent, fan, four overhead opening hatches and an opening port. AFT HEAD: The aft head is located opposite the galley on the starboard side with separate doorways to the main cabin and aft stateroom. The head features a separate shower, a Jabsco electric freshwater marine toilet and a sink with hot and cold running water. Entering the head from the main cabin, the shower w/glass door is to the left and features a shower wand, bench seat, towel hooks, overhead light and solar fan for ventilation. Next to the shower, the marine head is mounted on the forward bulkhead. A counter top with/stainless grab rail runs the length of the head along the hull side, with two mirrored lockers above. The countertop mounted sink is found to the right next to the aft bulkhead with a storage locker below. The toilet paper holder is integrated into the locker door. An additional mirror is mounted on the aft bulkhead, along with a towel rack and a 120 vac outlet next to the sink. Multiple towel hooks are found throughout the head. There is one overhead light, one over counter light and ventilation is provided by an opening port. ENGINE COMPARTMENT: The engine compartment is found under the cockpit companionway stairs, which hinge forward for full engine access. There are additional access doors on the rear, port and starboard sides providing easy access to the engine, dual Racor filters, raw water strainer and a battery charger inverter system with charge controller/leveler.

CATALINA 470 - BECKONING - ACCOMODATIONS

There are sleeping accommodations for 7 below decks and 2 above decks: - Forward Cabin - Double Pullman berth for 2- Aft Cabin - Queen berth for 2- Salon - Starboard settee converts to a single berth for 1, port settee converts to a double berth for 2- Cockpit - if desired there is room for 2 people to sleep on the cockpit benches

CATALINA 470 - BECKONING - MAIN CABIN

The main cabin is entered from the cockpit, eight steps down via a center companionway and houses the salon, galley and nav station: SALON: The salon occupies the forward section of the main cabin and features:- Two starboard seats with fold down table; converts to a single berth- Port U-Settee, seats 7, with foldable teak table and a pedestal table (stowed in forward stateroom); converts to a double berth- Shelving and storage lockers with louvered doors running length of salon, port & starboard side- Storage lockers below and behind seats and settee - Samsung 32" flat screen TV; model UN32J5205AF- LG DVD/CD player; model DP123- Xplod Advanced ESP MP3 Player- 2 Bose 151 stereo speakers - 4 Opening portlights w/shades- 2 fixed portlights w/shades- 2 Overhead opening hatches- 7 Overhead LED lights; 12 vdc- Overhead indirect lighting- 2 LED Sconce lamps, forward bulkhead mounted; 12 vdc- Hella Turbo Fan; 12 vdc- A/C Vent- 2 120 vac outlets- Headroom: 7' NAV STATION: The Navigation

Station occupies the aft starboard section of the main cabin and features:- Forward facing navigation table with lift top and under table storage- 2 Drawers - 2 Storage lockers- Bulkhead mounted rack- Under seat locker- Raymarine E80 Multi-function chartplotter/radar control unit- Raymarine ST290 data display unit- Raymarine Auto Pilot control panel- Standard Horizon Intrepid+ VHF radio- iCOM Marine IC-M802 Single Side Band Radio- PACTOR-Controller SCS PTC-IIpro; PC-Radio interface modem- iCOM SP-24 radio speaker - Beam-Inmarsat satellite telephone with docking station- Rosewill IEEE 802.11 N 2.0 Wireless Router; model RNX-EasyN4 2T2R version- Upiquiti Networks BULLET M2 WIFI antenna- Sony Xplod EQ7 MD/CD Changer Control; model 52WX4 - 120 VAC electrical control panel- 2 - 12 VDC electrical control panels- Battery distribution panel- Xantrix Link 1000 battery charger control panel - Fischer Panda generator control panel- Generator/Sore power panel- Tank-Level indicator panel- Winless Circuit Breaker- Macerator pump switch- Main Cabin A/C control panel- Weems & Plath clock; quartz- Ship's Bell- Fore/Aft Lev-O-Gage II- Chart Light; 12 vdc- Overhead LED light; 12 vdc- CE-TECH power strip- Overhead opening hatch- 2 fixed windows- Hella Turbo Fan; 12 vdc- Kidde, 1-A:10-B:C dry chemical fire extinguisher

GALLEY:The galley occupies the aft port section of the main cabin and features a large 360 wrap around layout including aft counter, stove and forward counter sections:

Aft Counter: - U shaped aft facing counter - Left side prep counter with locker underneath - Center, under counter refrigerator with top and front access - Refrigerator/Freezer control panel - 4 Over counter lockers along aft bulkhead - Spice rack, aft bulkhead mounted - Mr. Coffee drip coffee maker - 120 vac outlet - Towel dispenser - Right side aft, under counter Waeco Adler/Barbour freezer - Right side forward, prep counter with 4 drawers underneath - Right side over counter: Samsung 700 watt Microwave model MR4381G, utensil drawer - and A/C vent

Stove: - Seaward Princess 3 burner propane stove/oven; gimbaled w/stove top cover - Broan ventilation hood - Under stove drawer - Behind stove shelf and fixed port

Forward Counter: - Stainless steel double sink w/hot & cold running water - Whale manual water spigot - Spray wand - Under counter trash bin (top and side access) - Top access under counter locker - Under sink locker with foot pump to drain refrigerator compartment - 4 Over counter lockers - Seaward LPG solenoid switch - 2 Fixed windows- Hand hold, length of galley, hull side- 3 Overhead LED lights- Overhead opening hatch- Overhead solar fan- Smoke detector- Dishes, Glasses, Flatware, Pots & Pans- Headroom: 6' 10"

CATALINA 470 - BECKONING - AFT CABIN

The full beam aft cabin is accessed through a companionway between cockpit companionway and the aft head and includes: - Private cabin with solid door- Queen centerline berth (sleeps 2)- Under berth utility locker; containing fuel tanks- 2 Hanging lockers w/louvered doors; starboard side- Hanging locker w/louvered doors; port side- Utility locker w/louvered door; containing ac unit; port side- Locker w/louvered doors and shelving; port side- Drawer; port side- 2 drawers; starboard side- Shelving atop lockers; port and starboard sides- Bedside tables with drawers, port and starboard side- 2 Storage racks; forward bulkhead- Toshiba flat screen TV- Vanity shelf w/drawer; forward bulkhead- Mirror; forward bulkhead- Vanity light; above mirror; 12 vdc- 2 Overhead LED lights; 12 vdc- 2 Aft bulkhead mounted LED sconce lamps, dimmable; 12 vdc- 2 120 vac outlets- 12 vdc outlet- Coaxial cable outlet- A/C vent- A/C control panel- Wind generator

control panel- Navigation computer- 4 Opening overhead hatches- 1 Opening portlight- 2 Fixed portlights- 2 Hella turbo fans; 12 vdc- Overhead hand hold- Kiddie dry chemical fire extinguisher- Shared head access, forward starboard corner- Headroom: variable 6' 6" max

CATALINA 470 - BECKONING - AFT HEAD

The aft head is located on the starboard side opposite the galley, doubles as an ensuite head for the aft stateroom and includes:- Jabsco Marine Elegance electric marine toilet with fresh water flush- Separate shower w/glass door; including: - Shower wand, hot & cold running water - Bench seat - Towel hooks - Fixed window - Overhead light - Overhead solar fan/vent - Headroom: 6' 6"- Stainless steel sink w/hot and cold running water- Counter top w/grab rail- Under sink locker, w/toilet paper holder integrated into door- 2 mirrored over counter lockers- Aft bulkhead mounted mirror- Grab rail by shower- Towel rack- 5 Towel hooks- Toothbrush holder- Trash bin- Toilet brush w/holder- 120 vac outlet- Overhead light; 12 vdc- Over counter light; 12 vdc- Fixed window- Opening portlight- Headroom: 6' 6"

CATALINA 470 - BECKONING - FORWARD CABIN

The forward cabin is found forward of the salon and features:- Private cabin with solid door- Double berth; port side (sleeps 2)- Under berth front and top access utility locker; containing generator, batteries, water maker- Under berth top access locker; containing spares- Hanging lockers w/louvered doors; containing tools & spares; starboard side- Locker w/louvered doors and shelves; containing tools & spares; starboard side- Shelving atop lockers; starboard side- 3 Overhead LED lights; 12 vdc- 2 Aft bulkhead mounted LED reading lamps; above berth; 12 vdc- 120 vac outlet- 1 A/C vent- Opening overhead hatch- 4 Opening portlights- Hella turbo fan; 12 vdc- 5 Towel/clothing hooks- First Alert smoke alarm- Safe-T-Alert Carbon Monoxide Alarm- 2 Kidde dry chemical fire extinguisher- Control switches; macerator, genset, bow thruster, salt water wash down- Ensuite head access; forward bulkhead- Headroom: 6' 11"

CATALINA 470 - BECKONING - FORWARD HEAD

The forward ensuite head is located in the bow of the boat, is entered from the forward stateroom and includes:- Jabsco Marine Elegance electric marine toilet with fresh water flush- Separate shower w/glass door; including: - Shower wand, hot & cold running water - Shelving behind curtain - Soap dispenser - Squeegee w/holder - Towel hooks - 2 Overhead light - Sump pump switch - Headroom: 6'- Stainless steel sink w/hot and cold running water- Under sink locker, w/toilet paper holder integrated into door- 2 Mirrored over counter lockers- Shelf- Grab rail by shower- Towel rack- 3 Towel hooks- Toothbrush holder- Trash bin- Toilet brush w/holder- 120 vac outlet- 2 Overhead light; 12 vdc- Overhead hatch- Headroom: 6' 8"

CATALINA 470 - BECKONING - COCKPIT

The cockpit is in the stern of the boat and features:- Seating for 11: - U shaped bench seating for 7 passengers - 2 Helmsman seats - 2 Stern rail seats- Cockpit cushions- 2 Folding lounge pads- 2 Cushioned bench top seats w/arms- Fold down, center mounted cockpit table w/storage, 4 cup holder & foot brace- 2 Sony Marine waterproof stereo speakers- Cockpit Bimini top- Cockpit Dodger; hard top - Full enclosure panels- Sun shades- Walk through to swim platform- 2 Large transom lockers; port & starboard- 2 Storage locker; under port and starboard bench seats- Companionway to salon; center forward

CATALINA 470 - BECKONING - HELM

Dual, independent helm stations are found at the stern port and starboard and include:- Stainless steel Edson wheels- Helm seats- Ritchie Powerdamp magnetic binnacle compasses- Raymarine Autohelm Series Autopilot controls- Morse Throttle/Gear shift; starboard helm - Bow thruster control; starboard helm- Horizon Ram Mic VHS remote mic; starboard helm- Mounted riggers knife; starboard helm- Throttle/gear shift; starboard helm- Whale Gusher 10 MK3 manual bilge pump; port helm- Instrument pod center mounted aft of the cockpit table including: - Raymarine E120 Multi-Function Chart Plotter, wind, depths, speed - Simrad NSS evo2 Multi-Function Display - Engine instrument panel (key, start, stop, temp gauge w/warning light, oil pressure gauge w/warning light, voltmeter, tachometer, audible alarm, blower switch)- Instrument pod mounted in the forward table section including: - 2 Raymarine Multi-Function Displays - Raymarine Wind Instrument- Cup holders- Scuppers- Emergency tiller

CATALINA 470 - BECKONING - SWIM PLATFORM

Accessed via walk through transom and includes:- Shower wand with hot and cold running water- Swim ladder; integrates into stern rail- 2 30 Amp shore power receptacles- Dual tank propane locker

CATALINA 270 - BECKONING - DECK & HULL

- Fiberglass construction w/structural grid design- Forward crash bulkhead- Fin keel- Double stainless steel anchor mount w/rollers- 66 lb Bruce anchor with 200' of rode- 60 lb Mason anchor with 200' of chain- Spare Fortress anchor w/rode- Anchor locker (foredeck access) with: - Deep split chain wells - Salt and fresh water washdown spigots - Cleat - Maxwell windless with vertical capstan & chain gypsy; model VW1200- 2 Harkin 66.2 , 2 speed self-tailing winch; cockpit coming mounted, port & starboard - Harkin 44, 2 speed winch; cockpit cabin top mounted- Harkin 44, 2 speed electric winch; cockpit cabin top mounted- Winch handles- 2 Raised Genoa lead tracks; port & starboard- 2 Check blocks - Integrated line storage compartments- Signal flag set, w/full hoist halyard- Wind generator tower w/hailing horn and EPRIB mount- 10 Opening hatches- 8 Opening portlights; cabin side mounted- 4 Cabin side windows; fixed- 4 Fixed portlights; hull mounted- 2 NICRO Solar vents- Stainless steel bow pulpit and stern rail, connected by double life lines with port & starboard gates at cockpit, stern gate/swim ladder- 2

Stern rail seats- Stainless steel reinforced dingy davits, can be operated using electric winch- 6 Cleats; 2 at bow, 2 midship, 2 at stern- Manufacture's Select halogen underwater transom lights- Forespar Flopper Stopper roll stabilizer system- Rope ladder- QuickStep portable boarding step- Dock lines- Chafe guards- Fenders- Water hoses- 2 - 5 gal spare diesel containers- 5 gal spare gas container - Miscellaneous cleaning supplies & brushes- Cockpit companionway screen- Hatch screens- Portlight screens- Companionway screen- Navigation, running & anchor lights - Fuel fills; port and starboard side aft- 2 Waste pumpouts; port side forward, starboard side midship- Water fills; port & starboard sides, midship- Propane locker, dual tanks

CATALINA 270 - BECKONING - RIG

- Masthead sloop rig- Aluminum mast with in mast roller furling system- Aluminum boom- Forespare aluminum whisker pole; mast mounted- Whisker pole preventer- Schaefer headsail roller furling system- Boom vang, stainless steel with multi-purchase adjustment- Dutchman boom break - Cabin top mounted articulated traveler system- Stainless steel wire standing rigging- All running rigging leads aft to cockpit through stop chocks

CATALINA 270 - BECKONING - SAILS & CANVAS

- Mack Mainsail, 515 sq.ft. - 2017- 135% Genoa with padded luff, 495 sq.ft - 2012- Storm sail- Hard top dodger - 2014- Cockpit Bimini - 2014- Cockpit enclosure, including connector panel - 2014- Bimini sun shades - 2014

CATALINA 270 - BECKONING - ELECTRONICS

- Samsung 32" flat screen TV; model UN32J5205AF- Toshiba flat screen TV- LG DVD/CD player; model DP123- Xplod Advanced ESP MP3 Player- Sony Xplod EQ7 MD/CD Changer Control; model 52WX4- 2 Bose 151 stereo speakers - 2 Sony Marine waterproof stereo speakers- Raymarine E80 Multi-function chartplotter/radar control unit- Raymarine E120 Multi-Function Chart Plotter, wind, depths, speed- Raymarine ST290 data display unit- 2 Raymarine Auto Pilot control panels- Raymarine Autohelm Series Autopilot controls- Navigation Computer- Simrad NSS evo2 Sonar display- Standard Horizon Intrepid+ VHF radio w/hand held helm repeater- iCOM Marine IC-M802 Single Side Band Radio w/headphones- PACTOR-Controller SCS PTC-IIpro; PC-Radio interface modem- iCOM SP-24 radio speaker - Beam-Inmarsat satellite telephone with dock- Raymarine Sirius Weather System; model SR100- Weather Fax 2000 - Nobeltec AIS Receiver; model SLR-200- ACR Electronics Global Fix EPIRB, certified to May 2020- Rosewill IEEE 802.11 N 2.0 Wireless Router; model RNX-EasyN4 2T2R version- Ubiquiti Networks BULLET M2 WIFI antenna

CATALINA 470 - BECKONING - ELECTRICAL

- 2 12 VDC electrical system panel - 120 VAC electrical system panel- 120 VAC 60 HZ Blue Sea distribution panel- 120 VAC 30 A master breaker panel- 120w 60A Genset breaker- Wind generator control panel- Generator control panel- Generator/Shore Power switching panel- Battery switching panel- Xntrex battery charging system control panel- Bow thruster master switch- Salt water wash down switch- TriColor/Anchor light switch- Fisher Panada 8 kw Marine Generator, model 8 w/Kubota diesel engine model Z482-E - 1,610.5 hours- MarineKinetix Wind Generator; 450 wats, model MK450 - Xantrix Freedom Marine 25 2500 Watt 130 Amp Inverter Charger; model 81-2511-12 - 5/2003- Charging system controller/leveler- PathMaker heart interface 200 amp, 3 battery automatic switch- West Marine Power Inverter, 400 watt; model 8617482- Portable 12 vdc 120 vac inverter- West Marine generator cranking battery - 6/2/2018 - 12 vdc, 800 MCA, 20 Ah; P/N: 15020233- Intimidator AGM Extended Life heavy duty deep cycle bow thruster battery - 2017 - 12 vdc, 1450 CCA, 245 AH @ 20 Hr; P/N: 8A8D- Intimidator AGM Extended Life heavy duty deep cycle house battery - 2017 - 12 vdc, 1450 CCA, 245 AH @ 20 Hr; P/N: 8A8D- AGM Extended Life auxiliary engine starting battery - 2018- 3 Blue Sea 120 Amp Battery Breakers- Balmar 70 Series 110 amp alternator- 2, 30 Amp shore power receptacle- Cable TV/Telephone receptacle- 4, 30 Amp shore power cables- 50 Amp/30 Amp shore power splitter- Jumper cables - Portable solar panel battery pack

CATALINA 470 - BECKONING - MECHANICAL

- Yanmar 75 hp 4 cylinder auxiliary diesel engine, fresh water cooled; model 4JH3-TE - 4,268.5 hours- PYI Packless Sealing System shaft seal- Max Prop three blade 21" folding bronze propeller- SPURS Line & Net cutter; drive shaft mounted- Ultra marine products muffler- 2 Racor fuel filter/water separator, model 500FG- Parker/Racor fuel filter/water separator, model R15T- 2 Raw water strainers- Facet Gold-Flow electronic fuel pump - 11/7/2017- Vetus bow thruster- 2 Dometic Cruisair 16,000 btu reverse cycle air conditioning units - Fasco Industries A/C water pump - 7/29/2016- Waeco Adler/Barbour refrigeration unit- PUR PowerSurvivor Endurance Series water maker, model MROD-160E, (requires service, kit aboard) - Seward 11 gal hot water heater, w/engine exchanger, model F-1100 - 7/16/2014- Seachoice 3.5 gph house water pump, model 17881 - 2016- Grey water sump system - 7/9/2018- Jabsco shower drain transfer pump - 7/6/2018- Par-Max 4.0 60 psi automatic washdown pump, model 32605-0092- Jabsco 1950 bilge pump w/Rule-A-Matic float switch- 2 Jabsco Marine Elegance electric marine toilets; fresh water flush; separate/independent systems- 2 Jabsco self-priming macerator pump, model 18590; holding tank discharge - offshore- BilgeBuster ozone generator- Zink Saver II Galvanic Isolator- Portable Tornado Fan

CATALINA 470 - BECKONING - SAFETY

- Switlik Man Overboard Module, man overboard recovery system, model MOM 8-A- Life Sling Overboard Rescue System- Man overboard boom mounted block & tackle- West Marine throwable man overboard line- Commercial ring buoy throwable life ring w/stern rail mount, Type IV P.F.D.- Jacklines - Safety harnesses- 5 Off-Shore Lifejackets, adult, type I PFD- 2 Near-Shore Buoyant Vests, adult, type II PFD- Fanny Pack PFD- Para-Tech Delta Drogue- Winslow 6 person

life raft, model 60SLOP- 2 Grab & Go survival kits- Grab & Go flair & smoke kit- ACR Electronics Global Fix EPIRB, certified to May 2020- Mobeltec AIS System, model SLR-200- Forspare floating strobe light, model WL-1- Whale MK 3 manual bilge pump- Hand held manual bilge pump

CATALINA 470 - BECKONING - SPARES LOCKER

- Tool set- Yanmar auxiliary engine spare parts set, including filters, gaskets, hoses, belts & impellers- Genset spares kit- Rigging kit- Electrical parts kit- Spare wind generator blades- Spare auxiliary engine alternator- Assorted spare electrical cable & wires- Assorted spare hoses - Assorted rolls of tape- Assorted spare light bulbs- Lubricants, cleaners, antifreeze- Spare radio hand held repeater cable- Spare VHF antenna- Spare AIS antenna - Spare running light- Spare propane solenoid- Spare zincs- Traveler rebuild kit- Max prop maintenance kit- Line cutter spare parts- Water maker filters- Water maker maintenance kit- Spare tank monitor sensor- Spare house water pump- Spare bilge pumps- 2 Spare Rule bilge pump automatic float switches - Jabsco electric drill oil pump kit- Engine oil change system; vacuum type- 2 Hump hoses w/4 clamps- Set of emergency patching materials- Caulk & gun- Set of clamps- Rag bag and absorbent pads

CATALINA 470 - BECKONING - TENDER

- Mercury 4 person RIB, model AA300053M - 2015- Nissan 9.8 hp Outboard Engine; model NS9.8B 3K9-1- Portable fuel tank- Manual inflation pump

Исключения

При продаже яхты исключаются личные вещи владельца.

Отказ от ответственности

Компания предоставляет описание судна или яхты добросовестно, но не может гарантировать точность этой информации, а также не ручается за техническое состояние. Покупатель должен проинструктировать своих агентов или оценщиков исследовать представленную информацию более подробно, по собственному желанию. Продажа судна или яхты, изменение цены или снятие с продажи будет происходить без предварительного уведомления.

ФОТОГРАФИИ

Catalina 470 - Beckoning - - 34



Catalina 470 - Beckoning - - 1



Catalina 470 - Beckoning - - 4



Catalina 470 - Beckoning - - 3



Catalina 470 - Beckoning - - 5



Catalina 470 - Beckoning - - 6



Catalina 470 - Beckoning - - 26

Catalina 470 - Beckoning - - 7



Catalina 470 - Beckoning - - 8



Catalina 470 - Beckoning - - 9



Catalina 470 - Beckoning - - 105



Catalina 470 - Beckoning - - 15



Catalina 470 - Beckoning - - 111

Catalina 470 - Beckoning - - 110



Catalina 470 - Beckoning - - 61



Catalina 470 - Beckoning - - 130



Catalina 470 - Beckoning - - 67



Catalina 470 - Beckoning - - 27



Catalina 470 - Beckoning - - 80



Catalina 470 - Beckoning - - 47



Catalina 470 - Beckoning - - 68



Catalina 470 - Beckoning - - 14



Catalina 470 - Beckoning - - 48



Catalina 470 - Beckoning - - 95



Catalina 470 - Beckoning - - 49



Catalina 470 - Beckoning - - 32



Catalina 470 - Beckoning - - 94

Catalina 470 - Beckoning - - 131



Catalina 470 - Beckoning - - 96



Catalina 470 - Beckoning - - 69



Catalina 470 - Beckoning - - 83



Catalina 470 - Beckoning - - 50



Catalina 470 - Beckoning - - 35



Catalina 470 - Beckoning - - 66



Catalina 470 - Beckoning - - 124



Catalina 470 - Beckoning - - 102



Catalina 470 - Beckoning - - 78



Catalina 470 - Beckoning - - 72



Catalina 470 - Beckoning - - 84



Catalina 470 - Beckoning - - 41



Catalina 470 - Beckoning - - 104

Catalina 470 - Beckoning - - 79



Catalina 470 - Beckoning - - 85



Catalina 470 - Beckoning - - 82



Catalina 470 - Beckoning - - 42



Catalina 470 - Beckoning - - 70



Catalina 470 - Beckoning - - 77



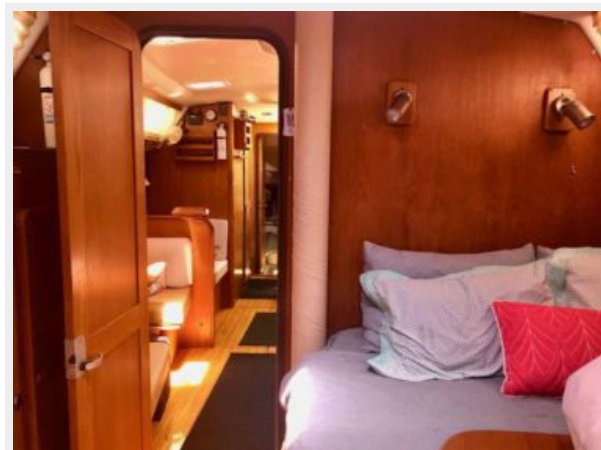
Catalina 470 - Beckoning - - 92



Catalina 470 - Beckoning - - 97



Catalina 470 - Beckoning - - 98



Catalina 470 - Beckoning - - 93



Catalina 470 - Beckoning - - 52



Catalina 470 - Beckoning - - 100



Catalina 470 - Beckoning - - 88



Catalina 470 - Beckoning - - 46



Catalina 470 - Beckoning - - 89



Catalina 470 - Beckoning - - 53



Catalina 470 - Beckoning - - 99



Catalina 470 - Beckoning - - 36



Catalina 470 - Beckoning - - 28



Catalina 470 - Beckoning - - 19



Catalina 470 - Beckoning - - 101



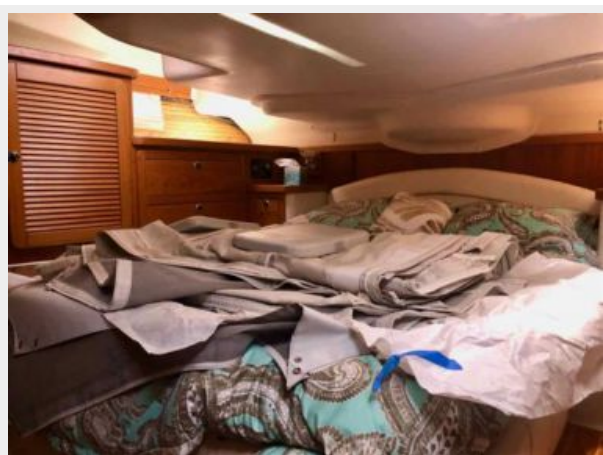
Catalina 470 - Beckoning - - 109



Catalina 470 - Beckoning - - 117



Catalina 470 - Beckoning - - 113



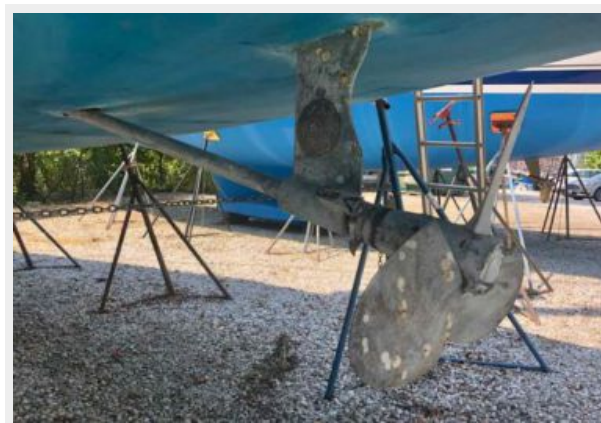
Catalina 470 - Beckoning - - 29



Catalina 470 - Beckoning - - 114



Catalina 470 - Beckoning - - 62



Catalina 470 - Beckoning - - 106



Catalina 470 - Beckoning - - 103



Catalina 470 - Beckoning - - 20



Catalina 470 - Beckoning - - 31



Catalina 470 - Beckoning - - 118



Catalina 470 - Beckoning - - 108



Catalina 470 - Beckoning - - 112



Catalina 470 - Beckoning - - 116



Catalina 470 - Beckoning - - 121



Catalina 470 - Beckoning - - 119



Catalina 470 - Beckoning - - 21



Catalina 470 - Beckoning - - 60



Catalina 470 - Beckoning - - 123



Catalina 470 - Beckoning - - 125



Catalina 470 - Beckoning - - 63



Catalina 470 - Beckoning - - 128



Catalina 470 - Beckoning - - 23



Catalina 470 - Beckoning - - 71



Catalina 470 - Beckoning - - 73



Catalina 470 - Beckoning - - 74



Catalina 470 - Beckoning - - 75



Catalina 470 - Beckoning - - 17



Catalina 470 - Beckoning - - 39



Catalina 470 - Beckoning - - 25



Catalina 470 - Beckoning - - 43

Catalina 470 - Beckoning - - 11



Catalina 470 - Beckoning - - 81



Catalina 470 - Beckoning - - 86



Catalina 470 - Beckoning - - 90



Catalina 470 - Beckoning - - 91



Catalina 470 - Beckoning - - 87



Catalina 470 - Beckoning - - 51



Catalina 470 - Beckoning - - 30



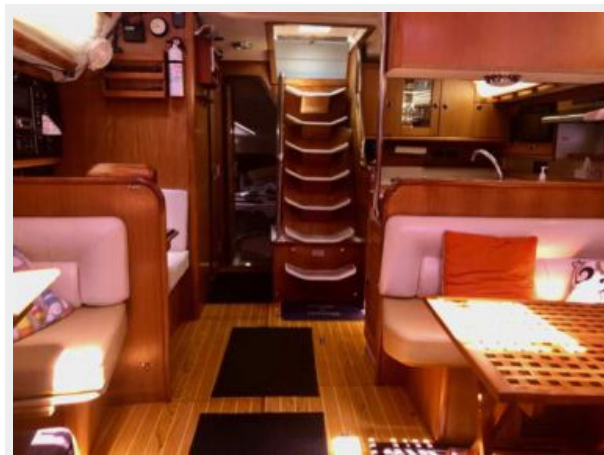
Catalina 470 - Beckoning - - 54



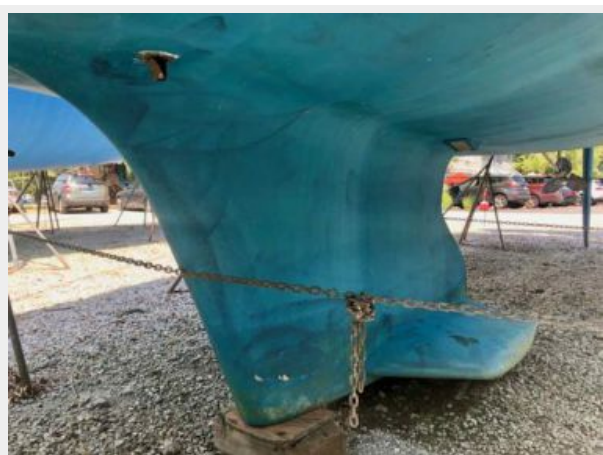
Catalina 470 - Beckoning - - 10



Catalina 470 - Beckoning - - 107



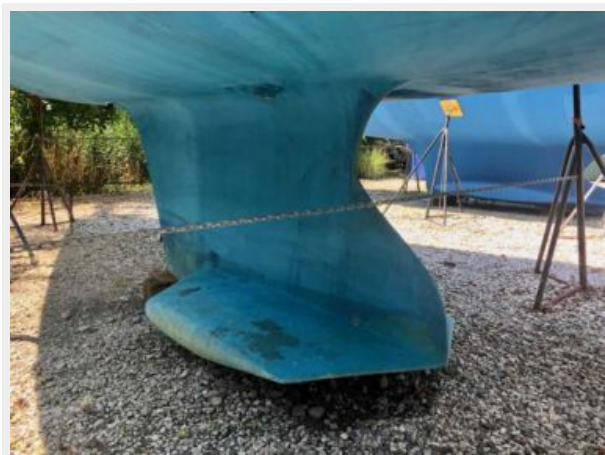
Catalina 470 - Beckoning - - 57



Catalina 470 - Beckoning - - 115



Catalina 470 - Beckoning - - 58

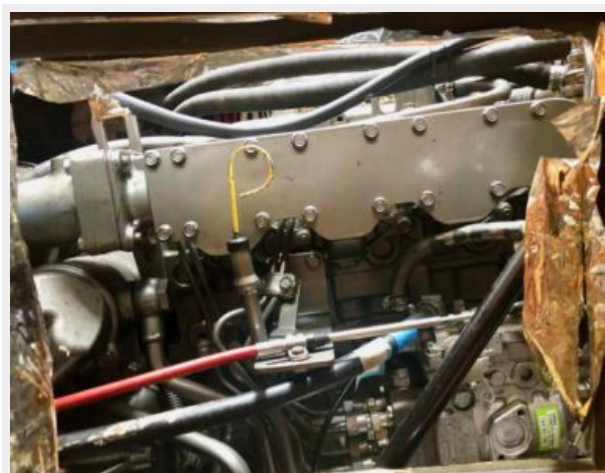


Catalina 470 - Beckoning - - 120



Catalina 470 - Beckoning - - 126

Catalina 470 - Beckoning - - 122



Catalina 470 - Beckoning -- 127



Catalina 470 - Beckoning -- 65



Catalina 470 - Beckoning -- 22



Catalina 470 - Beckoning -- 37



Catalina 470 - Beckoning - - 76



Catalina 470 - Beckoning - - 18



Catalina 470 - Beckoning - - 45



Catalina 470 - Beckoning - - 12



Catalina 470 - Beckoning - - 33



Catalina 470 - Beckoning - - 16



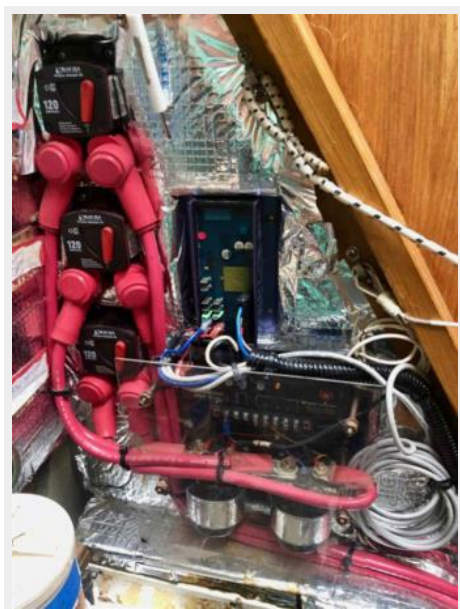
Catalina 470 - Beckoning - - 64



Catalina 470 - Beckoning - - 13



Catalina 470 - Beckoning - - 129



Catalina 470 - Beckoning - - 40



Catalina 470 - Beckoning - - 44



Catalina 470 - Beckoning - - 55



Catalina 470 - Beckoning - - 56



Catalina 470 - Beckoning - - 59



Catalina 470 - Beckoning - - 24



Catalina 470 - Beckoning - - 38



КОНТАКТЫ

Андрей Шестаков (Andrey Shestakov) – ведущий яхтенный брокер отдела продаж яхт и судов компании Shestakov Yacht Sales Inc. Официальный представитель Shestakov Yacht Sales Inc. для русскоговорящих клиентов в центральном офисе компании в Майами/Форт Лодердейл/Флорида/США.

Контактная информация

Email: andrey@shestakovyachtsales.com

Web: shestakovyachtsales.com

Телефоны

Краснодарский край: **+7(918)465-66-44**

США, Майами, Флорида: **+1(954)274-4435**

Время работы

Понедельник – Суббота: **9:00 - 21:00**
EDT

Воскресенье: **Закрито**

Адрес



Harbour Towne Marina, 850 NE 3rd St,
STE 213, Dania, FL 33004