

## SANLORENZO SL106 — SANLORENZO



**Builder:** SANLORENZO

**Year Built:** 2015

**Model:** Motor Yacht

**Price:** PRICE ON APPLICATION

**Location:** Hong Kong

**LOA:** 105' 8" (32.20m)

**Cruise Speed:** 25 Kts. (29 MPH)

**Max Speed:** 29 Kts. (33 MPH)

Our experienced yacht broker, Andrey Shestakov, will help you choose and buy a yacht that best suits your needs **Sanlorenzo SL106 — SANLORENZO** from our catalogue. Presently, at **Shestakov Yacht Sales Inc.**, we have a wide variety of yachts available on our sale's list. We also work in close contact with all the big yacht manufacturers from all over the world.

If you would like to buy a yacht **Sanlorenzo SL106 — SANLORENZO** or would like help answering any questions concerning purchasing, selling or chartering a yacht, please call **+1(954)274-4435**

# TABLE OF CONTENTS

---

TABLE OF CONTENTS	2
SPECIFICATIONS	4
Basic Information	4
Dimensions	4
Speed, Capacities and Weight	4
Accommodations	4
Hull and Deck Information	4
Engine Information	5
PHOTOS	6
Screenshot 2019-07-08 at 17.31.04	6
Sanlorenzo SL106_4	6
Screenshot 2019-07-08 at 17.30.45	6
Screenshot 2019-07-08 at 17.30.54	6
Screenshot 2019-07-08 at 17.30.18	6
Sanlorenzo SL106_1	6
Sanlorenzo SL106_9	7
Sanlorenzo SL106_11	7
Screenshot 2019-07-08 at 17.31.14	7
Screenshot 2019-07-08 at 17.31.32	7
Screenshot 2019-07-08 at 17.32.24	7
Screenshot 2019-07-08 at 17.31.56	7
Screenshot 2019-07-08 at 17.32.58	8
Screenshot 2019-07-08 at 17.32.48	8
Screenshot 2019-07-08 at 17.33.09	8
Screenshot 2019-07-08 at 17.33.18	8
Screenshot 2019-07-08 at 17.32.14	8
Screenshot 2019-07-08 at 17.33.32	8
CONTACTS	9

---

Contact details	9
Telephones	9
Office hours	9
Address	9

---

# SPECIFICATIONS

---

## Basic Information

---

**Category:** Motor Yacht

**Sub Category:** Flybridge

**Model Year:** 2015

**Year Built:** 2015

**Country:** Hong Kong

**Fly Bridge:** Yes

**Cockpit:** Yes

## Dimensions

---

**LOA:** 105' 8" (32.20m)

## Speed, Capacities and Weight

---

**Cruise Speed:** 25 Kts. (29 MPH)

**Cruise Speed Range:** 407

**Max Speed:** 29 Kts. (33 MPH)

**Displacement:** 275577.8275 Pounds

**Gross Tonnage:** 199 Pounds

**Water Capacity:** 211.3376416 Gallons

**Fuel Capacity:** 2192.6280316 Gallons

**Fuel Consumption:** 1083.1054132 Gallons

## Accommodations

---

**Total Cabins:** 3

**Sleeps:** 6

## Hull and Deck Information

---

**Hull Material:** Fiberglass

---

## Engine Information

---

**Engines:** 2

**Manufacturer:** MTU

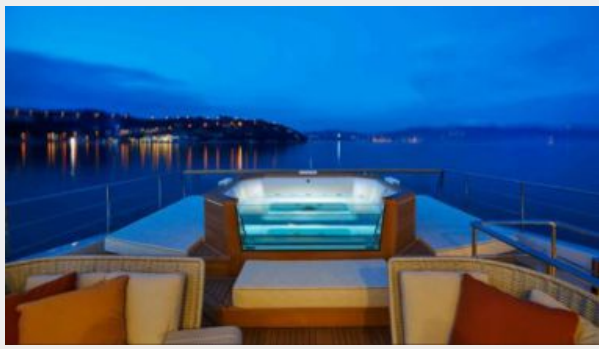
**Model:** 16V2000M93

**Engine Type:** Inboard

**Fuel Type:** Diesel

# PHOTOS

Screenshot 2019-07-08 at 17.31.04



Sanlorenzo SL106\_4



Screenshot 2019-07-08 at 17.30.45



Screenshot 2019-07-08 at 17.30.54



Screenshot 2019-07-08 at 17.30.18



Sanlorenzo SL106\_1



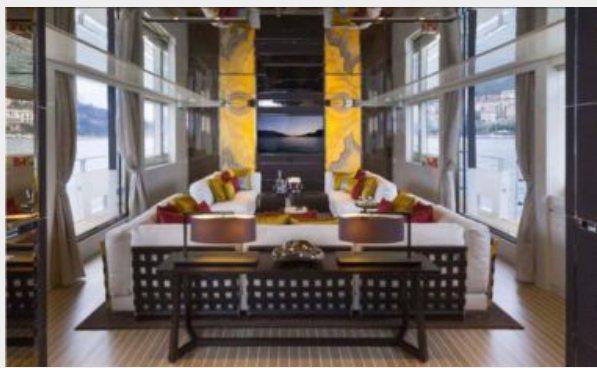
Sanlorenzo SL106\_9



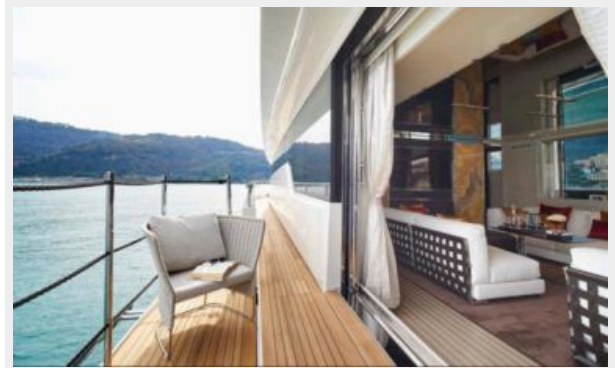
Sanlorenzo SL106\_11



Screenshot 2019-07-08 at 17.31.14



Screenshot 2019-07-08 at 17.31.32



Screenshot 2019-07-08 at 17.31.56



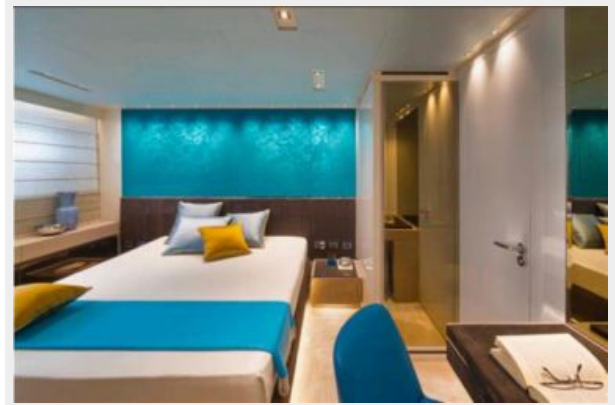
Screenshot 2019-07-08 at 17.32.24



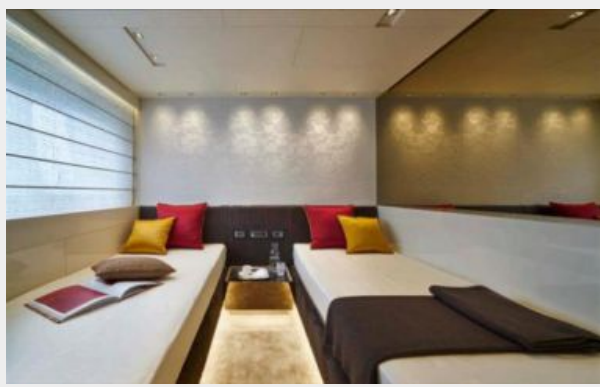
Screenshot 2019-07-08 at 17.32.48



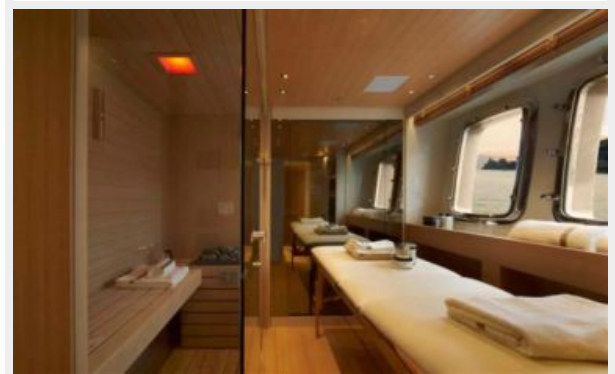
Screenshot 2019-07-08 at 17.32.58



Screenshot 2019-07-08 at 17.33.09



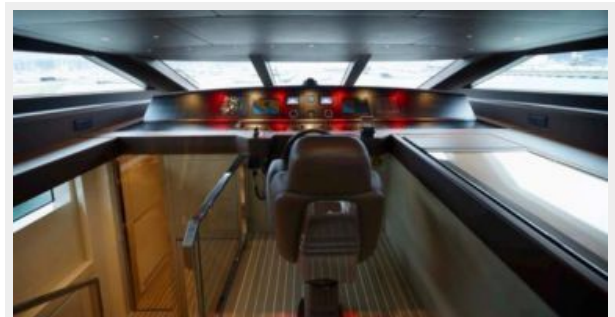
Screenshot 2019-07-08 at 17.33.18



Screenshot 2019-07-08 at 17.32.14



Screenshot 2019-07-08 at 17.33.32





# CONTACTS

---

Andrey Shestakov, leading yacht broker of the sales department of Shestakov Yacht Sales Inc. Shestakov Yacht Sales Inc., the official representative of the Miami/Fort Lauderdale FL headquarters.

## Contact details

---

Email: [andrey@shestakovyachtsales.com](mailto:andrey@shestakovyachtsales.com)

Web: [shestakovyachtsales.com/en/](http://shestakovyachtsales.com/en/)

## Telephones

---

USA: +1(954)274-4435

## Office hours

---

Monday – Saturday: **9:00 - 21:00** EDT

Sunday: **closed**

## Address

---



Harbour Towne Marina, 850 NE 3rd St,  
STE 213, Dania, FL 33004