

LAFKIS — BABA



Builder: BABA

Year Built: 1984

Model: Cutter

Price: PRICE ON APPLICATION

Location: United States

LOA: 35' 0" (10.67m)

Beam: 11' 2" (3.40m)

Min Draft: 5' 5" (1.65m)

Max Draft: 5' 5" (1.65m)

Our experienced yacht broker, Andrey Shestakov, will help you choose and buy a yacht that best suits your needs **Lafkis — BABA** from our catalogue. Presently, at Shestakov Yacht Sales Inc., we have a wide variety of yachts available on our sale's list. We also work in close contact with all the big yacht manufacturers from all over the world.

If you would like to buy a yacht **Lafkis — BABA** or would like help answering any questions concerning purchasing, selling or chartering a yacht, please call **+1(954)274-4435**

TABLE OF CONTENTS

TABLE OF CONTENTS	2
SPECIFICATIONS	8
Overview	8
Basic Information	8
Dimensions	8
Speed, Capacities and Weight	8
Hull and Deck Information	9
Engine Information	9
DETAILED INFORMATION	10
MAIN DESCRIPTION	10
BABA 35 ACCOMMODATIONS	10
BABA 35 SAILS AND RIGGING	10
BABA 35 COCKPIT	10
BABA 35 ENGINE ROOM AND BILGE	11
BABA 35 HULL AND DECK	11
BABA 35 PLUMBING AND ELECTRICAL	11
BABA 35 GALLEY	11
BABA 35 ELECTRONICS	12
BABA 35 EXCLUSIONS	12
DISCLAIMER	12
Exclusions	12
Disclaimer	12
PHOTOS	13
02	13
01	13
23	13
10d	13
53	14

47	14
57	14
64	14
58	15
31	15
81	15
09a	15
108	16
11	16
14	16
06	16
67	17
65	17
70	17
68	17
80	18
82	18
85	18
08	18
38	19
39	19
90	19
40	19
22	19
55	19
59	20
15	20
29a	20
29b	20

69	20
77	20
37	21
84b	21
91	21
88	21
92	22
20	22
42a	22
95	22
97	22
98	22
10e	23
99	23
102	23
103	23
111	23
12	23
51	24
49	24
26	24
13	24
56	25
61	25
62	25
28	25
63	25
66	25
10a	26

71	26
32	26
73	26
74	27
75	27
33	27
78	27
84c	27
19	27
86	28
21	28
44	28
96	28
45	29
48	29
16	29
17	29
84a	30
18	30
89	30
87	30
46	30
110	30
50	31
52	31
27	31
07	31
60	31
10b	31

05	32
72	32
83	32
93a	32
93b	32
03	32
94	33
109	33
107	33
34	33
36	33
42c	33
24	34
43	34
25	34
30	34
79	35
10c	35
35	35
001 LAFKIS hi res	35
105	36
104	36
09b	36
41	36
106	37
CONTACTS	38
Contact details	38
Telephones	38
Office hours	38

Address

38

SPECIFICATIONS

Overview

The Baba 35 hunkers down in heavy air, cutting through the waves with such stability you'll feel safe even if taking water over the rail. She's unexpectedly fast and agile; with a hull speed of 7 and registering 8.1 on the GPS on occasion, and with the modified full keel she has a surprisingly small turning radius. Her prop is skeg protected, which minimizes risk of damage from crab pots or underwater debris. A Robert Perry design, she's a real head turner, drawing compliments from the dock and on the water, cutting an elegant profile whether flying three sails or two. Her teak exterior trim is professionally maintained, as are all her systems, and she comes with an original Ta Shing dinghy. The teak interior is brightened by a butterfly hatch and cream colored crown and headliner. The wrap around galley stabilizes the chef while heeling, and her comfy v-berth has doors for privacy when needed. She has built-in air conditioning/reverse cycle heat for use at the dock and a propane heater for use underway in winter. Since she reportedly came from the factory with fiberglass decks, her interior hasn't suffered the wear and tear of excessive water intrusion so common in boats that have teak decks removed. If you are looking for a truly classic sailing yacht, you owe it to yourself to see this Baba. But be forewarned; you'll fall in love!

Basic Information

Category: Cutter

Model Year: 1984

Year Built: 1984

Country: United States

Dimensions

LOA: 35' 0" (10.67m)

LWL: 29' 7" (9.02m)

Beam: 11' 2" (3.40m)

Min Draft: 5' 5" (1.65m)

Max Draft: 5' 5" (1.65m)

Clearance: 54' 0" (16.46m)

Speed, Capacities and Weight

Displacement: 21140 Pounds

Water Capacity: 100 Gallons

Holding Tank: 30 Gallons

Fuel Capacity: 50 Gallons

Hull and Deck Information

Hull Material: Fiberglass

Engine Information

Engines: 1

Manufacturer: Universal

Model: 5432

Engine Type: Inboard

Fuel Type: Diesel

DETAILED INFORMATION

MAIN DESCRIPTION

The Baba 35 hunkers down in heavy air, cutting through the waves with such stability you'll feel safe even if taking water over the rail. She's unexpectedly fast and agile; with a hull speed of 7 and registering 8.1 on the GPS on occasion, and with the modified full keel she has a surprisingly small turning radius. Her prop is skeg protected, which minimizes risk of damage from crab pots or underwater debris. A Robert Perry design, she's a real head turner, drawing compliments from the dock and on the water, cutting an elegant profile whether flying three sails or two. Her teak exterior trim is professionally maintained, as are all her systems, and she comes with an original Ta Shing dinghy. The teak interior is brightened by a butterfly hatch and cream colored crown and headliner. The wrap around galley stabilizes the chef while heeling, and her comfy v-berth has doors for privacy when needed. She has built-in air conditioning/reverse cycle heat for use at the dock and a propane heater for use underway in winter. Since she reportedly came from the factory with fiberglass decks, her interior hasn't suffered the wear and tear of excessive water intrusion so common in boats that have teak decks removed. If you are looking for a truly classic sailing yacht, you owe it to yourself to see this Baba. But be forewarned; you'll fall in love!

BABA 35 ACCOMMODATIONS

Reverse cycle air conditioning/heatForce 10 propane cabin heaterOpening butterfly hatch in salon12 opening portsOpening forward hatch in master V-berthGenerous dinette with settee oppositeDining table lowers to cocktail heightHanging lockers, drawers, lots of lockers for storageNav station/chart tableQueen size master cabin with closing doors, bedside lockers, under-bed drawers Quarterberth on starboardTeak/holly sole throughoutHella 12v fans

BABA 35 SAILS AND RIGGING

Cutter rigged sloopTraditional mainsail, plus spare110 and alternate 150 jibs on Profurl C350 roller furling Traditional hank-on staysail, plus spareGennaker (or Asym cruising spinnaker) with launching sockMost sails are believed to be 2006; all are inspected regularly and kept in good serviceable conditionWinches, all serviced within last year: Andersen 18ST, 2xAndersen 34?s self tailing, and Lewmar on mastAndersen 46ST self-tailing two speed for jib sheets, at cockpit port and starboardLewmar Two Speed 16 for main traveler, port and starboard on coach roofAndersen 40ST self-tailing two speed on coach roof for main sheetAndersen 40 self-tailing at cockpit for roller furling

BABA 35 COCKPIT

Sunbrella bimini/Strataglass dodger/connector/protective covers 2019Sunbrella hatch covers
 2017Closed cell foam cushions for cockpit and aft railHot/cold fresh water showerWeather cloths
 Louvered teak companionway doorsScreen insert and Lexan insert for companionwayLifering
 throwable floatation deviceStereo speaker in cockpitHand held microphone for VHFSlide-in
 cockpit tableSturdy binnacle, teak wheel, compass, with Sunbrella coverTeak floor grateDeep
 lazarette and cockpit lockersPropane compartment, 2 tanks

BABA 35 ENGINE ROOM AND BILGE

Universal diesel engine, qualifies as Antique VesselMost hoses and belts replaced 2017-
 2019Heat exchanger inspected 20192 electric bilge pumps (2017) plus manual for
 emergencyAluminum fuel tanks (2) with total capacity of 50 gallonsStainless steel water tanks (2)
 with total capacity of 100 gallonsFiberglass holding tank (1) with 30 gallon capacity

BABA 35 HULL AND DECK

Fiberglass decks - reported to be factory originalExterior teak professionally maintainedModified
 full keel with skeg protected prop3 blade bronze prop 17RH10 on 1 1/4" shaftLewmar electric
 windlass installed 20172 Spade anchors, one never used200' 3/8" BBB anchor chain4 Dorades
 for ventilationTeak boom gallows and Samson postBronze hawse pipes Stainless steel dinghy
 davits with pulleys for assisting launchingMatching original Ta Shing lapstrake tenderBottom
 paint 2017Coated lifelines (2018) with stainless steel stanchionsIn-hull drain system on weather
 decks Boarding ladderMagma propane grill

BABA 35 PLUMBING AND ELECTRICAL

LED spotlight on bow, with remote controlBattery A/B switchTrue Power Inverter 2018Minn Kota
 MK230PC battery charger 20182 group 31 batteries & 1 group 27 battery, 2018 Most lights
 converted to LED, including Nav lightsWired for future solar panels30 amp shore cableManual
 flush head rebuilt/serviced 2017Y-valve and macerator for offshore discharge (macerator
 2017)Attwood 10 gal water heater, electric and engine heatedWest Marine pressure pump with
 accumulator tankHot/cold freshwater shower in cockpitRaw water anchor wash on bowHand
 held shower with sump in head

BABA 35 GALLEY

Wrap around design for security when heelingAdler-Barbour DC refrigerator/freezerTwo burner
 propane stove/oven (gimbale) with solenoid switchDouble stainless steel sink with pull out
 faucet, fresh and raw water foot pedals, and filtration systemLots of drawers and cabinets, dry
 lockerTeak fiddles around counter tops have gaps for ease of cleaningCustom cutting
 board/stove cover

BABA 35 ELECTRONICS

Raymarine P70S linear drive autopilot (2019)Garmin GPSmap 546s plotterDatamarine Link 5000 wind & speedStandard Horizon Intrepid VHFStandard Horizon RAM Mic VHFClarion sound system with speakers in salon and cockpit

BABA 35 EXCLUSIONS

Garmin GPS 128 plotter and Raytheon R20XX radar at nav station are old and not warranted - can be removed or included as-is at no valueBlue Sky Solar Boost 2512i controllers installed with wiring still in place, but solar panels were removed when the bimini was replaced. Control and wiring can be removed or included as-is at no value.Datamarine Link 5000 Multi function works for wind direction and wind speed. GPS used for depth and boat speed.

DISCLAIMER

The Company offers the details of this vessel in good faith but cannot guarantee or warrant the accuracy of this information nor warrant the condition of the vessel. A buyer should instruct his agents, or his surveyors, to investigate such details as the buyer desires validated. This vessel is offered subject to prior sale, price change, or withdrawal without notice.

Exclusions

Owner's personal belongings.

Disclaimer

The Company offers the details of this vessel or yacht in good faith but cannot guarantee or warrant the accuracy of this information nor warrant the condition of the vessel. A buyer should instruct his representatives, agents, or his surveyors, to investigate such details as the buyer desires validated. This vessel or yacht is offered subject to prior sale, price change, or withdrawal without notice.

PHOTOS

02



01



23



10d



47



53



57



64



58



31



81



09a



108



11



14



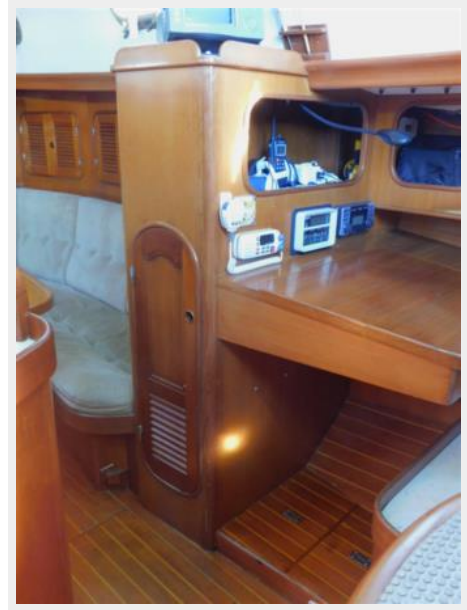
06



65



67



68



70



80



82



85



08



38



39



90



40



22



55



59



15



29a



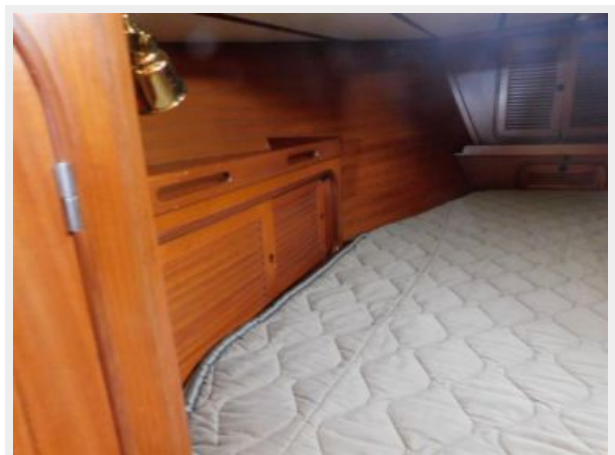
29b



69



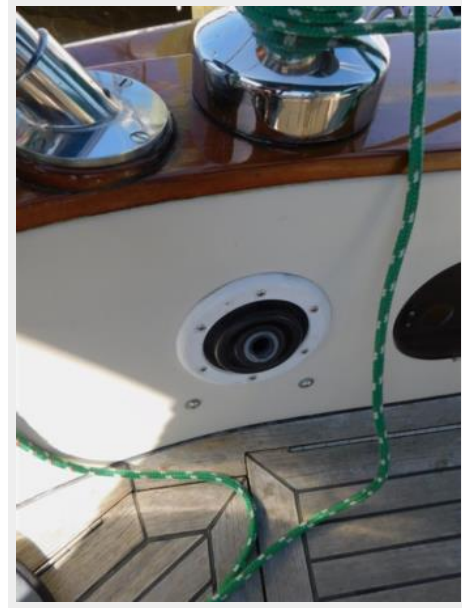
77



84b



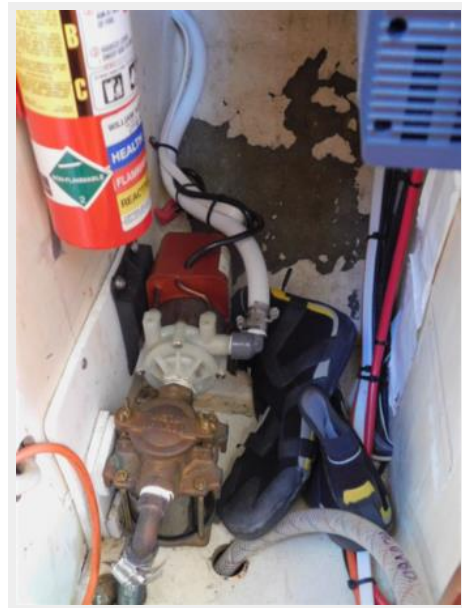
37



88



91



92



20



42a



95



97



98



10e



99



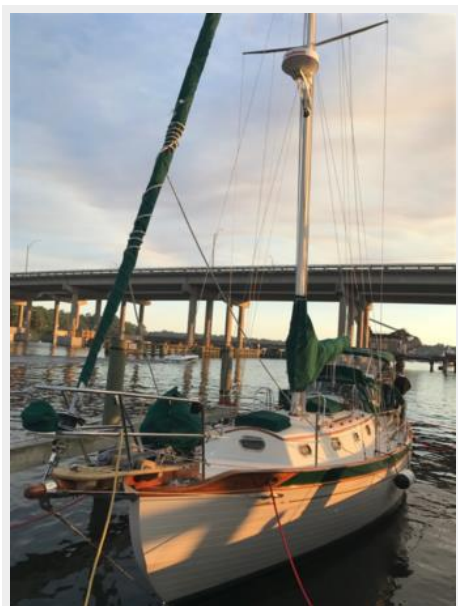
102



103



111



12



49



51



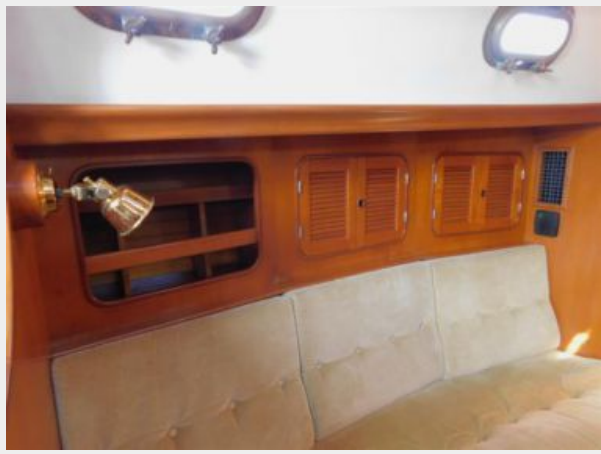
26



13



56



61



62



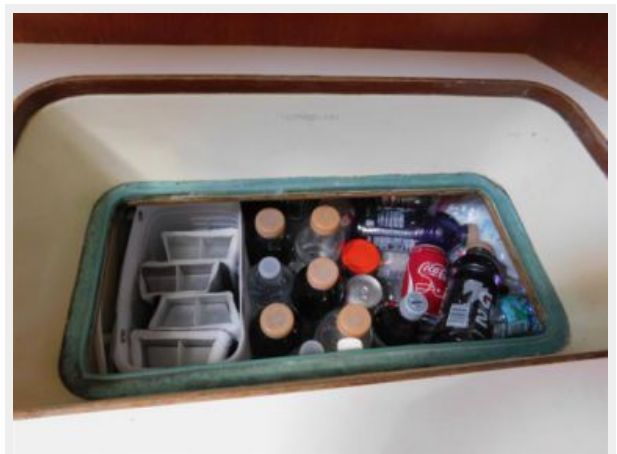
28



63



66



10a



71



32



73



74



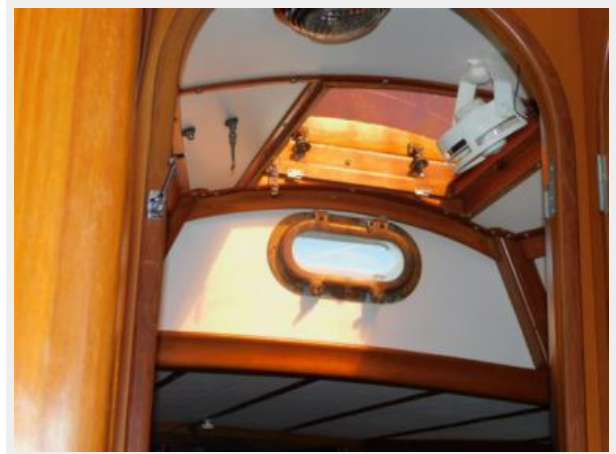
75



33



78



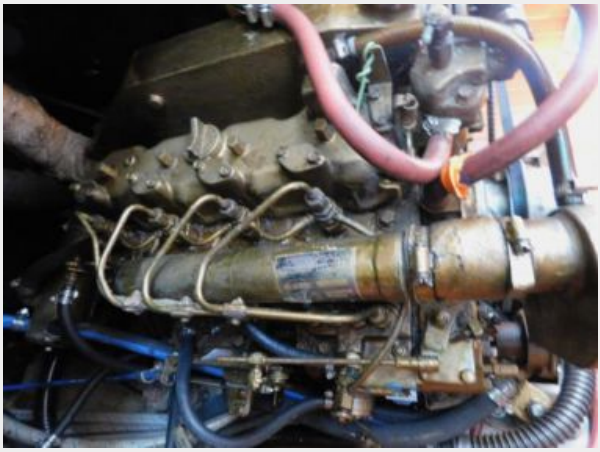
84c



19



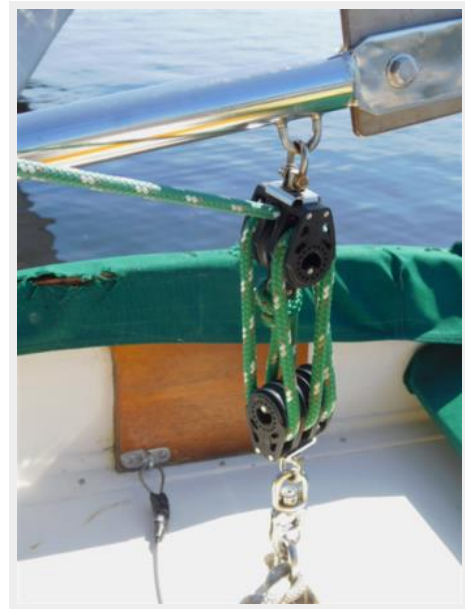
86



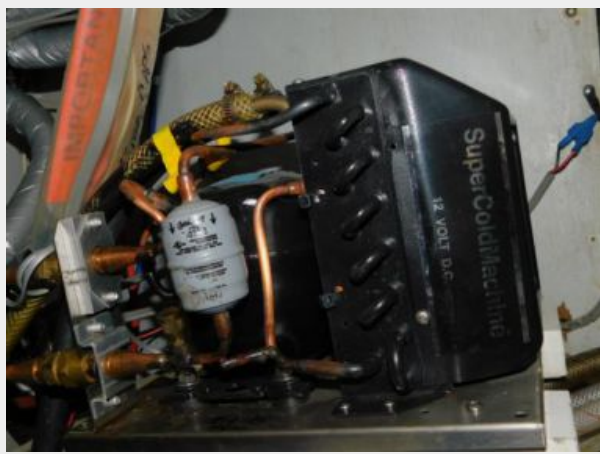
21



44



96



45



48



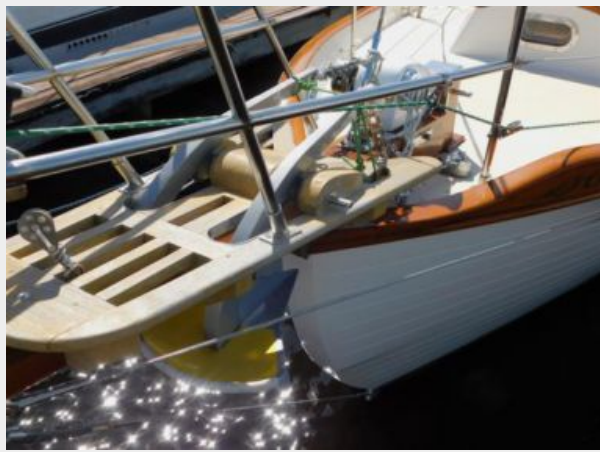
16



17



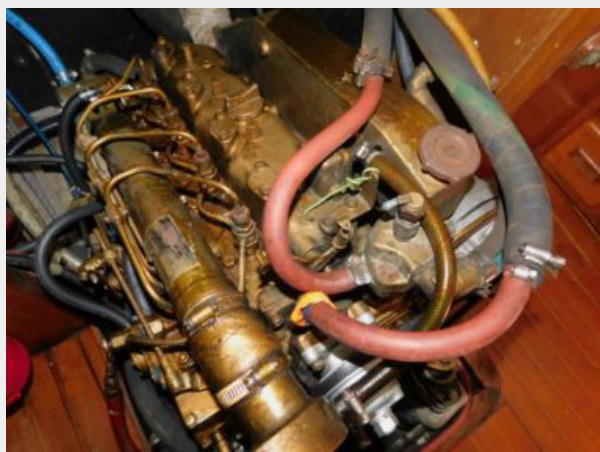
18



84a



89



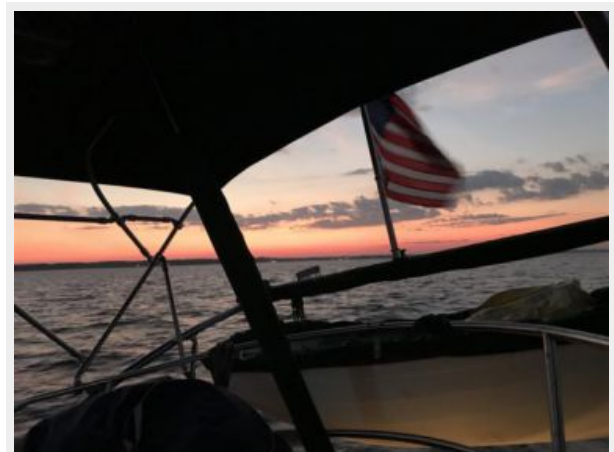
87



46



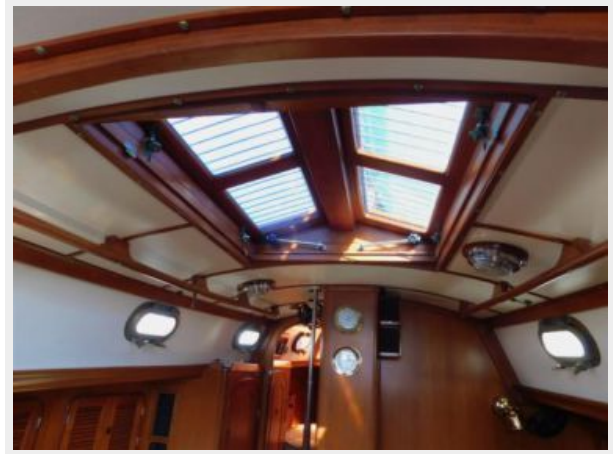
110



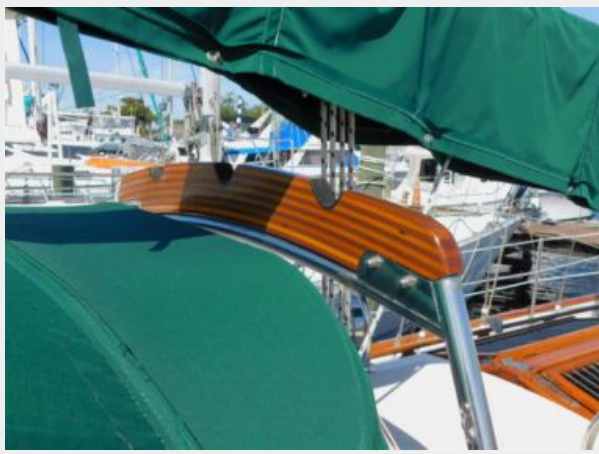
50



52



27



07



60



10b



72



05



83



93a



03



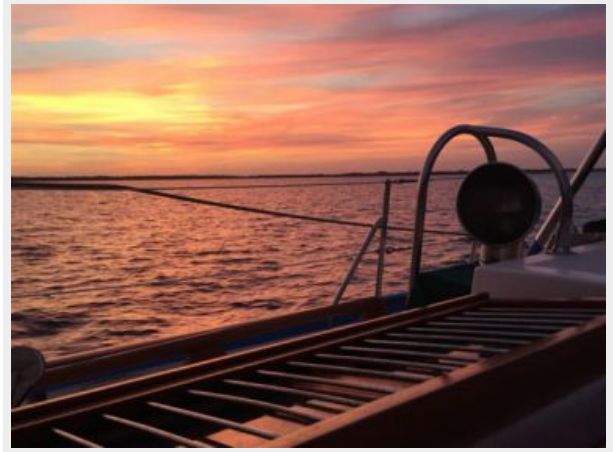
93b



94



109



107



34



36



42c



43



24



25



30



79



10c



35



001 LAFKIS hi res



104



105



09b



41



106



CONTACTS

Andrey Shestakov, leading yacht broker of the sales department of Shestakov Yacht Sales Inc. Shestakov Yacht Sales Inc., the official representative of the Miami/Fort Lauderdale FL headquarters.

Contact details

Email: andrey@shestakovyachtsales.com

Web: shestakovyachtsales.com/en/

Telephones

USA: +1(954)274-4435

Office hours

Monday – Saturday: **9:00 - 21:00** EDT

Sunday: **closed**

Address



Harbour Towne Marina, 850 NE 3rd St,
STE 213, Dania, FL 33004