

2012 64' ABSOLUTE — ABSOLUTE



Судостроитель: ABSOLUTE

Длина общая: 64' 0" (19.51m)

Год постройки: 2012

Ширина: 16' 11" (5.16m)

Модель: Other

Цена: **ЦЕНА ЯХТЫ ПО ЗАПРОСУ**

Местонахождение: United States

Купить 2012 64' Absolute — ABSOLUTE а также выбрать подходящую вам яхту из нашего каталога яхт вам поможет опытный яхтенный брокер Андрей Шестаков. На сегодняшний день компания Shestakov Yacht Sales Inc. имеет большое количество яхт в собственном списке продаж, а также тесно сотрудничает со всеми крупными яхтенными производителями по всему миру.

Для того чтобы купить яхту 2012 64' Absolute — ABSOLUTE а также проконсультироваться по любому вопросу связанному с покупкой, продажей, чартером яхт позвоните по телефону **+7(918)465-66-44**.

ОГЛАВЛЕНИЕ

ОГЛАВЛЕНИЕ	2
ХАРАКТЕРИСТИКИ	4
Обзор	4
Основная информация	4
Размеры	4
Размещение	4
Корпус и палуба	4
Информация о двигателе	5
ПОДРОБНОЕ ОПИСАНИЕ	6
Additional Information:	6
Disclaimer	8
Исключения	8
Отказ от ответственности	8
ФОТОГРАФИИ	9
DSC02213	9
DSC02215	9
DSC02216	9
DSC02238	9
IMG-4752	9
IMG-4751	9
DSC02239	10
IMG-4757	10
DSC02220	10
DSC02230	10
absolute Vip	10
DSC02224	10
DSC02233	11
DSC02241	11

IMG-4756	11
IMG-4754	11
IMG-4755	11
DSC02218	11
КОНТАКТЫ	12
Контактная информация	12
Телефоны	12
Время работы	12
Адрес	12

ХАРАКТЕРИСТИКИ

Обзор

- Maintenance and Service of the 4 engines (filters, belts, tensions, oils, coolant, etc.) was carried out.
- After coolers of the 4 machines were changed
- the wiring and terminals of the entire barcode were electrically maintained
- replacements of 24 gel batteries
- service and grinding of the turbos of the 4 machines
- full service to the generator (painting and updating)
- interior and exterior upholstery

Основная информация

Тип судна: Other

Модельный год: 2012

Год постройки: 2012

Страна: United States

Кубрик: Да

Размеры

Длина общая: 64' 0" (19.51m)

Ширина: 16' 11" (5.16m)

Размещение

Всего кают: 3

Всего ком. состава: 3

Корпус и палуба

Материал корпуса: Fiberglass

Информация о двигателе

Двигатели: 4

Производитель: Volvo Penta

Модель: IPS600

Тип двигателя: Inboard

Тип топлива: Diesel

ПОДРОБНОЕ ОПИСАНИЕ

Additional Information:

ABSOLUTE 64: STYLE, SPORTSMANSHIP AND GLAMOUR

Absolute 64 Sport Yacht, that joined Absolute 70STY to complete the high Sport range. This expression of the unmistakable Absolute style comes from an innovative project, having great impact both in terms of aesthetic values and practical solutions on board. The hull's slender lines immediately reveal distinctive style and elegance, typical of the Absolute style. Only when getting on board, its uniqueness is then unveiled. Light, space, style and luxury; these concepts are melted in the main deck, creating a union of refinement and relax on board. A comfortable C-shaped sofa, a big teak table and the sunbathing area are all located aft in the cockpit. The sunbathing area is equipped with a "wet bar" with barbecue, fridge and a sink and, on request, with an ice maker and a pull-out TV screen. The cockpit retractable roof, made up of transparent panels, slightly protects the sofa, allowing sun lovers to sunbathe on the wide sunbathing cushion. Just underneath a wide garage can house a 3.25 meter tender. The cockpit and the saloon were developed on a big single surface, showing a smart and absolutely harmonic style and overcoming the difficulties created by the traditional "open space"; thanks to a big glazed sliding door, it is then possible to create one big environment, allowing to separate the two spaces, when needed, granting privacy and comfort in the air-conditioned hall. The living zone stuns immediately for the dressy and extensive design. A large C-shaped sofa lies in front of the pull-out 40" LCD TV screen. When walking to the bow, a wide and comfortable double helm position is located on the right side. The advanced technology is expressed here by two big soft-touch screens and a domotic system, controlling the facilities on board. The designers of the Absolute Research & Development Lab focused mainly to guarantee the maximum available living space for the bow, where a second comfortable dinette is laying very close to the windscreen, including a teak table and sunbathing cushions with adjustable back and lower peaks. The feeling of "endless" light continues in the lower deck with the four star equipped kitchen, where light gets in both from the big portholes and from the windscreen, and still goes on into the sleeping area, including 3 cabins and 3 bathrooms. The owner cabin is a charming full-beam suite, equipped with all comforts and top-end finishings. Moreover, it is extremely bright, thanks to the open-view windows on both side walls, and it is also provided with an elegance bathroom with a separated shower cabin. The guests on board can comfortably sleep in a double bed bow cabin or in a two single-bed cabin, both with private bathrooms. Finally, an aft cabin with dedicated access direct from the cockpit is assigned to the crew. After recording the high-level performance of the four engines installed on the Absolute 70, the Shipyard confirmed the multiple motorization (four IPS Volvo Penta engines) on this boat, too. The yacht is then extremely easy to handle in harbors or narrow places, guarantees noiseless operations, limited consumptions and high performance. With this model the Shipyard aims at completely changing the standards of the high categories, thanks to the achieved know-how and to the steady growing sales and to the numerous international prizes won.

COCKPIT/MAIN DECK

A comfortable C-shaped sofa, a big teak table and the sunbathing area are all located aft in the cockpit. The sunbathing area is equipped with a “wet bar” with barbecue, fridge and a sink and, on request, with an ice maker and a pull-out TV screen. The cockpit retractable roof, made up of transparent panels, slightly protects the sofa, allowing sun lovers to sunbathe on the wide sunbathing cushion. Just underneath a wide garage can house a 3.25 meter tender. The cockpit and the saloon were developed on a big single surface, showing a smart and absolutely harmonic style and overcoming the difficulties created by the traditional “open space”; thanks to a big glazed sliding door, it is then possible to create one big environment, allowing to separate the two spaces, when needed, granting privacy and comfort in the air-conditioned hall. The living zone stuns immediately for the dressy and extensive design. A large C-shaped sofa lies in front of the pull-out 40” LCD TV screen. When walking to the bow, a wide and comfortable double helm position is located on the right side. The advanced technology is expressed here by two big soft-touch screens and a domotic system, controlling the facilities on board.

BOW

The designers of the Absolute Research & Development Lab focused mainly to guarantee the maximum available living space for the bow, where a second comfortable dinette is laying very close to the windscreen, including a teak table and sunbathing cushions with adjustable back and lower peaks.

LOWER DECK

The feeling of “endless” light continues in the lower deck with the four star equipped kitchen, where light gets in both from the big portholes and from the windscreen, and still goes on into the sleeping area, including 3 cabins and 3 bathrooms.

MASTER CABIN

The owner cabin is a charming full-beam suite, equipped with all comforts and top-end finishing. Moreover, it is extremely bright, thanks to the open-view windows on both side walls, and it is also provided with an elegance bathroom with a separated shower cabin.

GUESTS CABINS AND AFT CABIN

The guests on board can comfortably sleep in a double bed bow cabin or in a two single-bed cabin, both with private bathrooms. Finally, an aft cabin with dedicated access direct from the cockpit is assigned to the crew. After recording the high-level performance of the four engines installed on the Absolute 70, the Shipyard confirmed the multiple motorization (four IPS Volvo Penta engines) on this boat, too. The yacht is then extremely easy to handle in harbors or narrow places, guarantees noiseless operations, limited consumption and high performance. With this model the Shipyard aims at completely changing the standards of the high categories, thanks to the achieved know-how and to the steady growing sales and to the numerous international prices

won.

Disclaimer

The Company offers the details of this vessel in good faith but cannot guarantee or warrant the accuracy of this information nor warrant the condition of the vessel. A buyer should instruct his agents, or his surveyors, to investigate such details as the buyer desires validated. This vessel is offered subject to prior sale, price change, or withdrawal without notice.

Исключения

При продаже яхты исключаются личные вещи владельца.

Отказ от ответственности

Компания предоставляет описание судна или яхты добросовестно, но не может гарантировать точность этой информации, а также не ручается за техническое состояние. Покупатель должен проинструктировать своих агентов или оценщиков исследовать представленную информацию более подробно, по собственному желанию. Продажа судна или яхты, изменение цены или снятие с продажи будет происходить без предварительного уведомления.

ФОТОГРАФИИ

DSC02213



DSC02215



DSC02216



DSC02238



IMG-4752



IMG-4751



DSC02239



IMG-4757



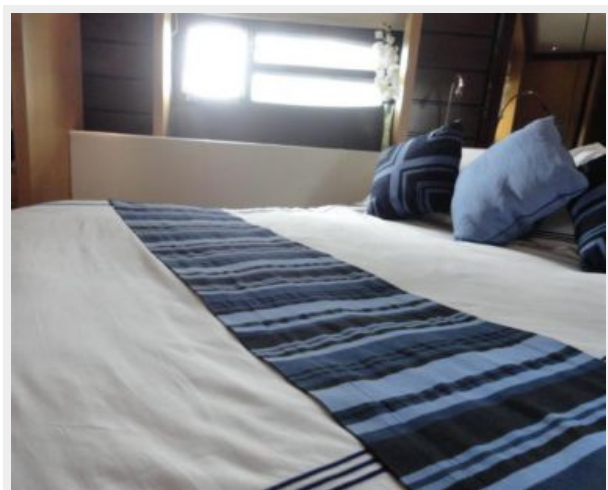
DSC02220



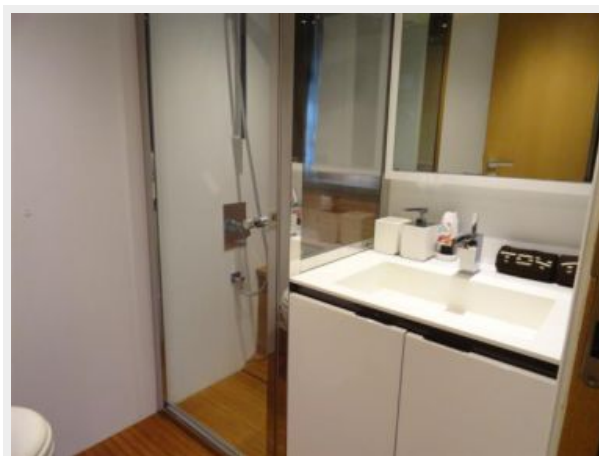
DSC02230



absolute Vip



DSC02224



DSC02233



DSC02241



IMG-4756



IMG-4754



IMG-4755



DSC02218



КОНТАКТЫ

Андрей Шестаков (Andrey Shestakov) – ведущий яхтенный брокер отдела продаж яхт и судов компании Shestakov Yacht Sales Inc. Официальный представитель Shestakov Yacht Sales Inc. для русскоговорящих клиентов в центральном офисе компании в Майами/Форт Лодердейл/Флорида/США.

Контактная информация

Email: andrey@shestakovyachtsales.com

Web: shestakovyachtsales.com

Телефоны

Краснодарский край: **+7(918)465-66-44**

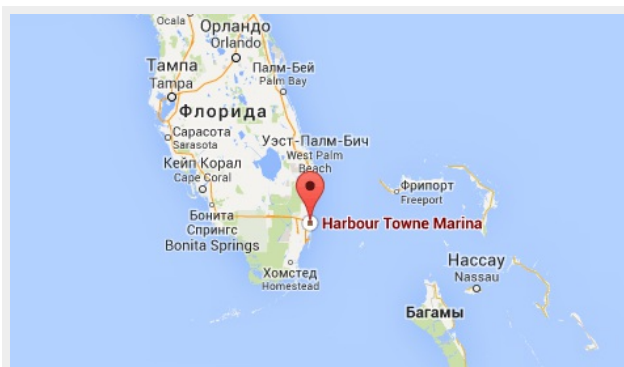
США, Майами, Флорида: **+1(954)274-4435**

Время работы

Понедельник – Суббота: **9:00 - 21:00**
EDT

Воскресенье: **Закрито**

Адрес



Harbour Towne Marina, 850 NE 3rd St,
STE 213, Dania, FL 33004